

ETSI EN 300 328 V1.9.1 (2015-02)

TEST REPORT

For

Advanced Technologies SRL.

Ion Heliade Radulescu nr 26, Bucharest 021255, ROMANIA

Model: ZUN X

Report Type: Amended Report	Product Type: Smartphone
Test Engineer: Haiguo Li	<i>Haiguo Li</i>
Report Number: RSZ160302004-22CA1	
Report Date: 2016-03-17	
Reviewed By: Bell Hu	<i>Bell Hu</i>
Prepared By: RF Engineer	
Prepared By: Bay Area Compliance Laboratories Corp. (Shenzhen) 6/F, the 3rd Phase of WanLi Industrial Building ShiHua Road, FuTian Free Trade Zone Shenzhen, Guangdong, China Tel: +86-755-33320018 Fax: +86-755-33320008 www.baclcorp.com.cn	

Note: This test report is prepared for the customer shown above and for the equipment described herein. It may not be duplicated or used in part without prior written consent from Bay Area Compliance Laboratories Corp. This report is valid only with a valid digital signature. The digital signature may be available only under the Adobe software above version 7.0.

TABLE OF CONTENTS

DOCUMENT REVISION HISTORY	3
EXHIBIT A - CE PRODUCT LABELING.....	4
PROPOSED CE LABEL FORMAT	4
PROPOSED LABEL LOCATION ON EUT	4
EXHIBIT B - EUT PHOTOGRAPHS	5
EUT – ALL VIEW	5
EUT – FRONT VIEW	5
EUT – REAR VIEW	6
EUT – TOP VIEW	6
EUT – BOTTOM VIEW	7
EUT – LEFT SIDE VIEW	7
EUT – RIGHT SIDE VIEW	8
EUT –COVER OFF VIEW 1	8
EUT –COVER OFF VIEW 2	9
EUT –COVER OFF VIEW 3	9
EUT – MAIN BOARD TOP VIEW	10
EUT – MAIN BOARD TOP SHIELDING OFF VIEW	10
EUT – MAIN BOARD BOTTOM VIEW	11
EUT – MAIN BOARD BOTTOM SHIELDING OFF VIEW	11
EUT – SUB BOARD TOP VIEW	12
EUT – SUB BOARD BOTTOM VIEW	12
EUT – IC CHIP VIEW	13
EUT – BATTERY TOP VIEW	13
EUT – BATTERY BOTTOM VIEW.....	14
EUT – USB CABLE & ADAPTER VIEW.....	14
EUT – ADAPTER LABEL VIEW	15
EUT – EARPHONE VIEW	15
BELOW IS THE ORIGINAL REPORT	16

DOCUMENT REVISION HISTORY

Revision Number	Report Number	Description of Revision	Date of Revision
0	RSZ151208012-22C	Original Report	2015-12-30
1	RSZ160302004-22CA1	Amended Report	2016-03-17

Note: This is an amended report based on the original report RSZ151208012-22C issued on 2015-12-30, the detailed differences between the original device and the current one were as below:

- (1) Changing the applicant from “Shenzhen East Xinyi Electronic Technology Co., Ltd.” with address “Room 20A, TAIBANG Technology bldg, High-Tech Park, Nanshan District, Shenzhen, China” to “Advanced Technologies SRL.” with address “Ton Heliade Radulescu nr 26, Bucharest 021255, ROMANIA”.
- (2) Changing the model number from “EX8535, EX8537” to “ZUN X”.
- (3) Changing the product name from “Brondi 530 4G HD” to “Smartphone”.
- (4) Changing the trade name from “East Xinyi” to “vonino”.
- (5) Changing the silk screen of EUT appearance.
- (6) Changing the flash from 1G to 2G memory.
- (7) Changing the device’s storage from 8G to 16G memory.
- (8) Changing the pixels of the rear camera from 2.0M to 5.0M.
- (9) Changing adapter and the battery label.
- (10) Adding LTE band 38 through a software operation.
- (11) Upgrading the standard from “ETSI EN 301 908-1 V6.2.1 (2013-04)” to “ETSI EN 301 908-1 V7.1.1 (2015-03)”.

Based on the above difference, it will not affect the test data. We just updated the EUT photos, the other photos and all test data please refer to the original report RSZ151208012-22C issued on 2015-12-30.

EXHIBIT A - CE PRODUCT LABELING

Proposed CE Label Format

CE 1313

Specifications: The marking set out above must be affixed to the apparatus or to its data plate and have a minimum height of 5 mm. The elements should be easily readable and indelible. They may be placed anywhere on the apparatus case or in its battery compartment. No tool should be needed to view the marking. 1313: 4 digit notified body number.

Note: The label should contain the below content:

- ① The name of the manufacturer or the person responsible for placing the apparatus on the market
- ② Type
- ③ Batch and/or serial numbers

Proposed Label Location on EUT



EXHIBIT B - EUT PHOTOGRAPHS

EUT – All View



EUT – Front View



EUT – Rear View



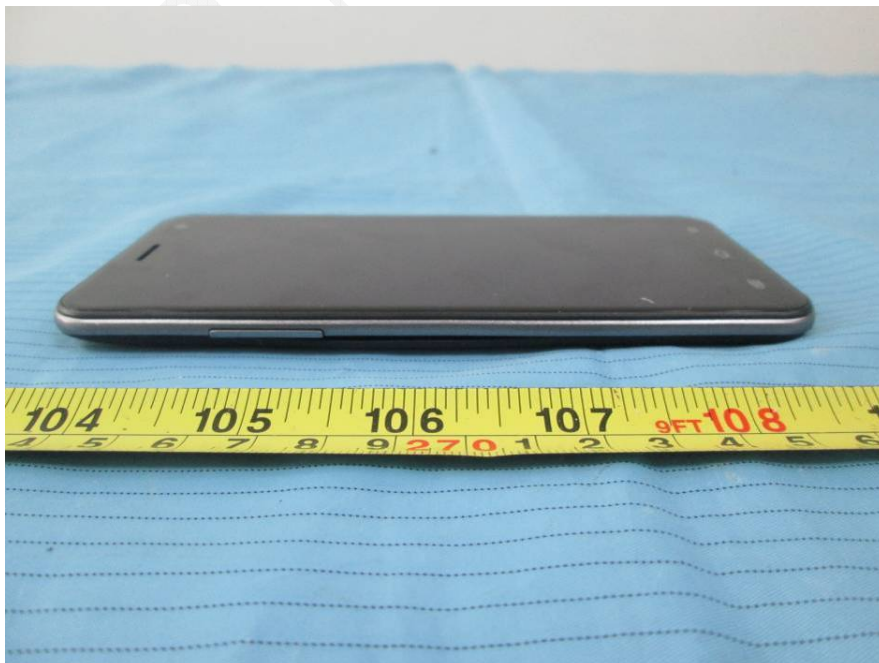
EUT – Top View



EUT – Bottom View



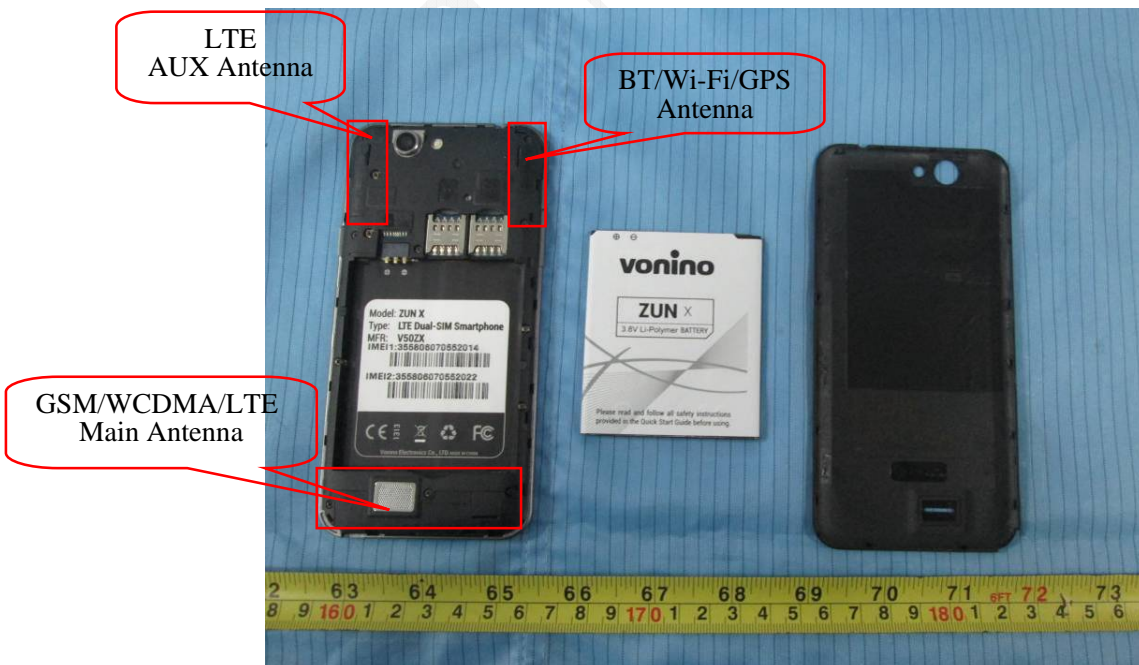
EUT – Left Side View



EUT – Right Side View



EUT –Cover off View 1



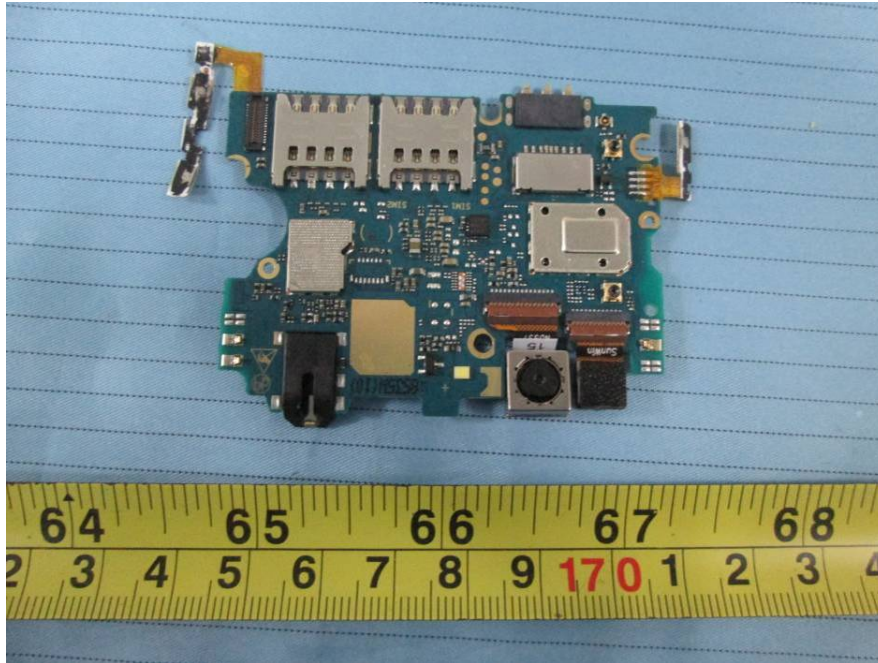
EUT –Cover off View 2



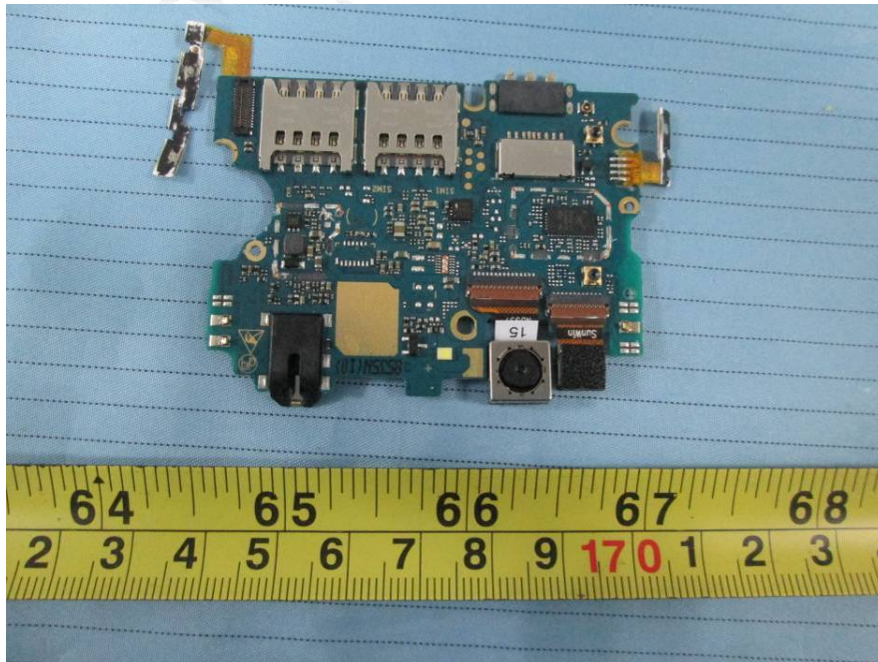
EUT –Cover off View 3



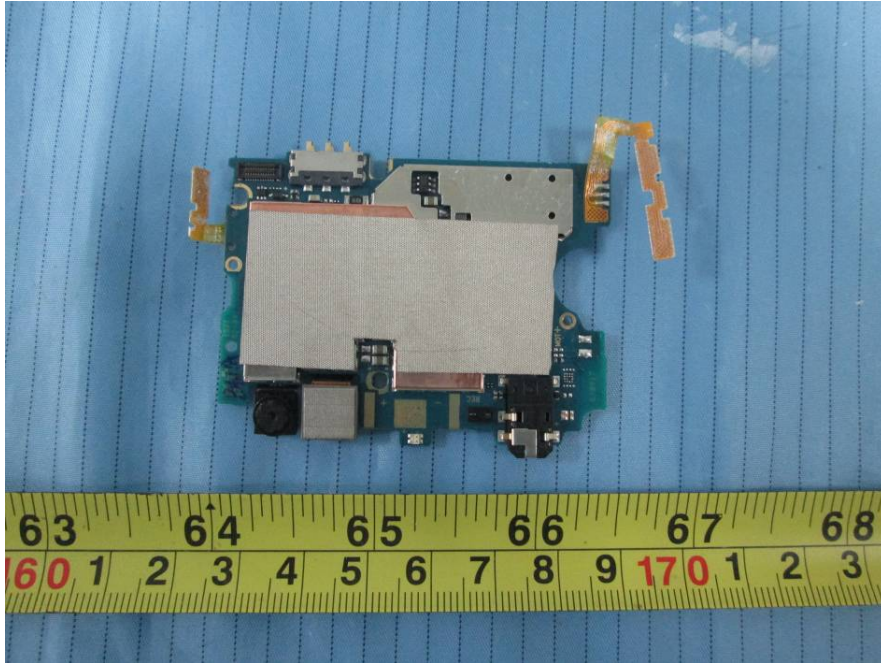
EUT – Main Board Top View



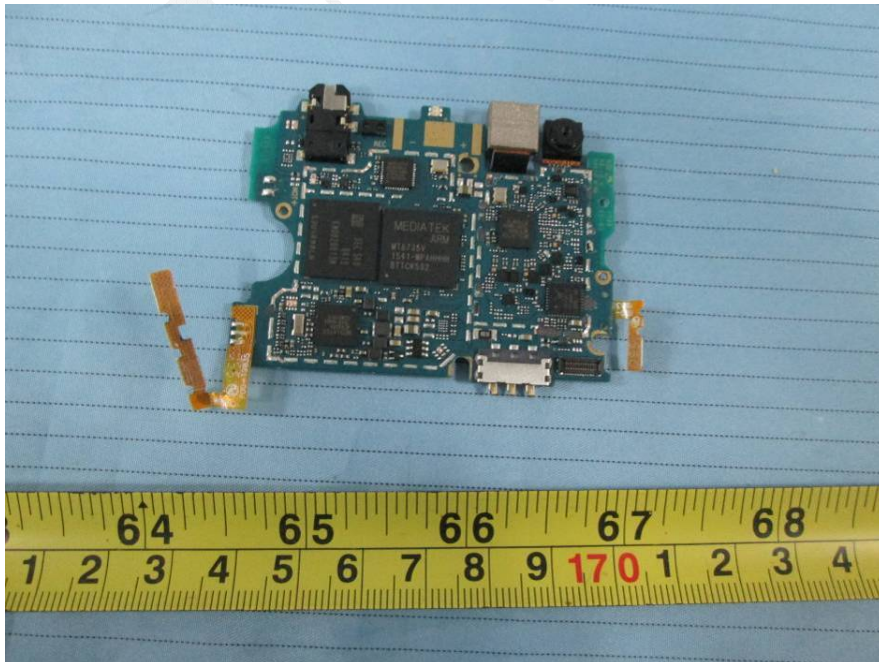
EUT – Main Board Top Shielding off View



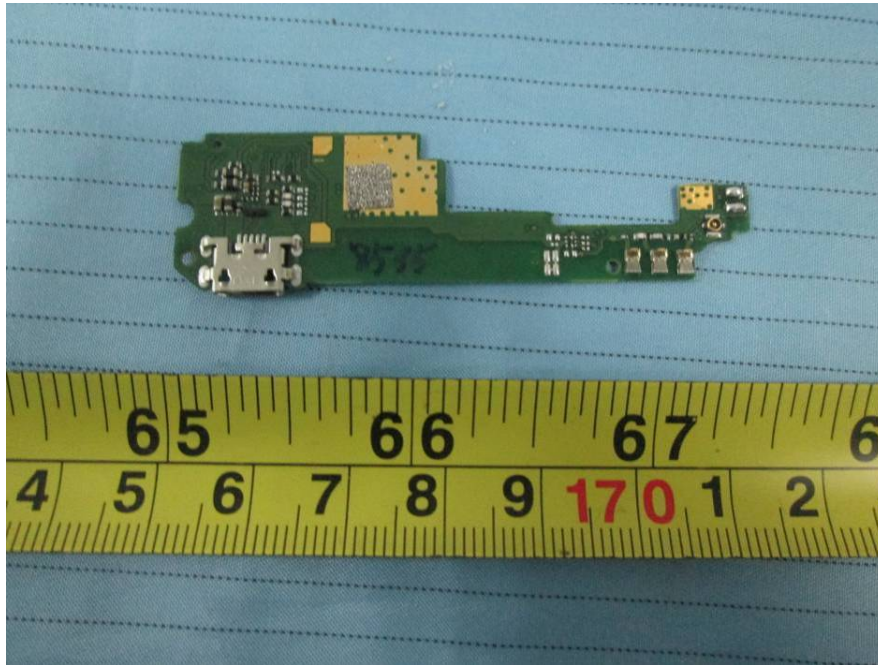
EUT – Main Board Bottom View



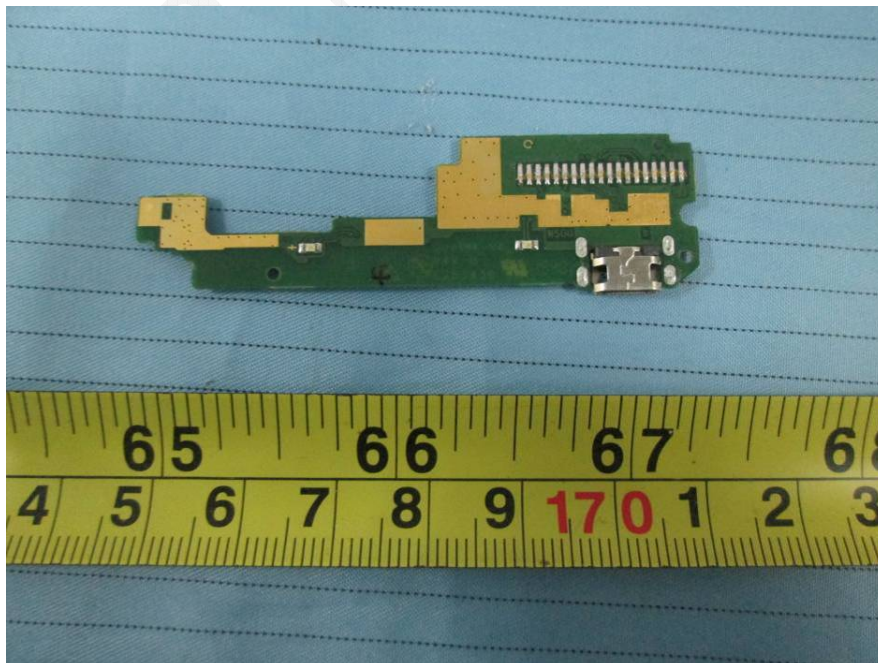
EUT – Main Board Bottom Shielding off View



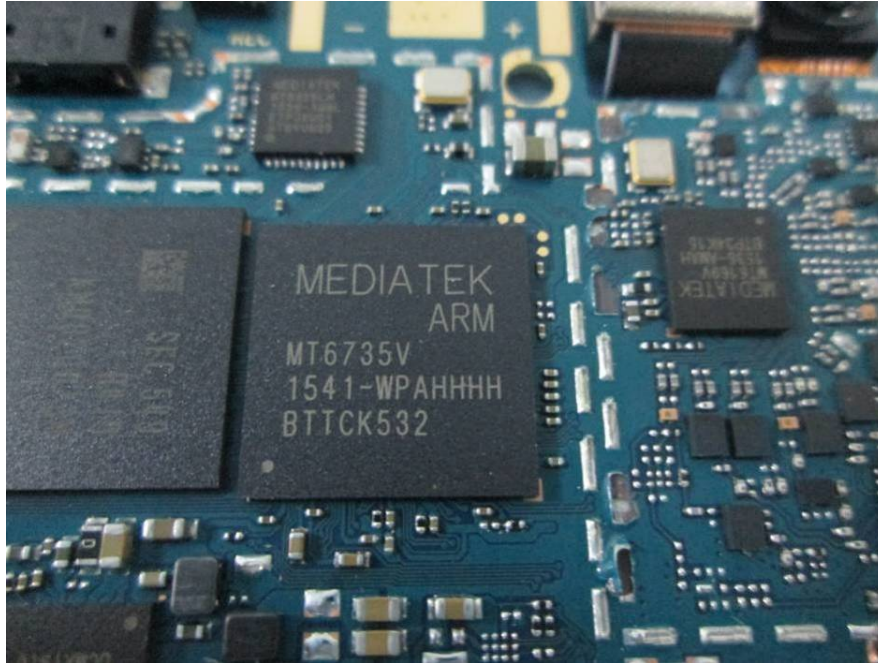
EUT – Sub Board Top View



EUT – Sub Board Bottom View



EUT – IC Chip View



EUT – Battery Top View



EUT – Battery Bottom View



EUT – USB Cable & Adapter View



EUT – Adapter Label View



EUT – Earphone View



BELOW IS THE ORIGINAL REPORT

ETSI EN 300 328 V1.9.1 (2015-02)

TEST REPORT

For

Shenzhen East Xinyi Electronic Technology Co., Ltd.

Room 20A, TAIBANG Technology bldg, High-Tech Park, Nanshan District, Shenzhen, China

Tested Model: EX8535
Multiple Model: EX8537

Report Type: Original Report	Product Type: Brondi 530 4G HD
Test Engineer: Haiguo Li	<i>Haiguo Li</i>
Report Number: RSZ151208012-22C	
Report Date: 2015-12-30	
Reviewed By: RF Engineer	<i>Candy Li</i>
Prepared By: Bay Area Compliance Laboratories Corp. (Shenzhen) 6/F, the 3rd Phase of WanLi Industrial Building ShiHua Road, FuTian Free Trade Zone Shenzhen, Guangdong, China Tel: +86-755-33320018 Fax: +86-755-33320008 www.baclcorp.com.cn	

Note: This test report is prepared for the customer shown above and for the equipment described herein. It may not be duplicated or used in part without prior written consent from Bay Area Compliance Laboratories Corp. This report is valid only with a valid digital signature. The digital signature may be available only under the Adobe software above version 7.0.

TABLE OF CONTENTS

GENERAL INFORMATION	4
PRODUCT DESCRIPTION FOR EQUIPMENT UNDER TEST (EUT).....	4
OBJECTIVE.....	4
RELATED SUBMITTAL(S)/GRANT(S).....	4
TEST METHODOLOGY.....	4
TEST FACILITY.....	5
SYSTEM TEST CONFIGURATION	6
DESCRIPTION OF TEST CONFIGURATION.....	6
EUT EXERCISE SOFTWARE.....	6
SPECIAL ACCESSORIES.....	6
EQUIPMENT MODIFICATIONS.....	7
BLOCK DIAGRAM OF TEST SETUP.....	7
SUMMARY OF TEST RESULTS	8
ETSI EN 300 328 V1.9.1 (2015-02) §4.3.2.2 – RF OUTPUT POWER	9
APPLICABLE STANDARD.....	9
TEST PROCEDURE.....	9
TEST EQUIPMENT LIST AND DETAILS.....	10
TEST DATA.....	10
ETSI EN 300 328 V1.9.1 (2015-02) §4.3.2.3 - POWER SPECTRAL DENSITY	13
APPLICABLE STANDARD.....	13
TEST PROCEDURE.....	13
TEST SETUP BLOCK DIAGRAM.....	15
TEST EQUIPMENT LIST AND DETAILS.....	15
TEST DATA.....	15
ETSI EN 300 328 V1.9.1 (2015-02) §4.3.2.7 – OCCUPIED CHANNEL BANDWIDTH	22
APPLICABLE STANDARD.....	22
TEST PROCEDURE.....	22
TEST EQUIPMENT LIST AND DETAILS.....	23
TEST DATA.....	23
ETSI EN 300 328 V1.9.1 (2015-02) §4.3.2.7 – TRANSMITTER UNWANTED EMISSION IN THE OUT-OF-BAND DOMAIN	28
APPLICABLE STANDARD.....	28
TEST PROCEDURE.....	28
TEST EQUIPMENT LIST AND DETAILS.....	28
TEST DATA.....	29
ETSI EN 300 328 V1.9.1 (2015-02) §4.3.2.9 – TRANSMITTER UNWANTED EMISSION IN THE SPURIOUS DOMAIN	34
APPLICABLE STANDARD.....	34
MEASUREMENT UNCERTAINTY.....	34
TEST PROCEDURE.....	34
TEST EQUIPMENT LIST AND DETAILS.....	35
TEST DATA.....	35
ETSI EN 300 328 V1.9.1 (2015-02) §4.3.2.10 – RECEIVER SPURIOUS EMISSIONS	37
APPLICABLE STANDARD.....	37

MEASUREMENT UNCERTAINTY.....	37
TEST PROCEDURE	37
TEST EQUIPMENT LIST AND DETAILS.....	38
TEST DATA	38
EXHIBIT A - E.1 INFORMATION AS REQUIRED BY EN 300 328 V1.9.1, CLAUSE 5.3.1.....	40
EXHIBIT B - CE PRODUCT LABELING.....	44
CE LABEL FORMAT.....	44
PROPOSED LABEL LOCATION ON EUT	44
EXHIBIT C - EUT PHOTOGRAPHS.....	45
EUT – ALL VIEW	45
EUT – FRONT VIEW	45
EUT – REAR VIEW	46
EUT – TOP VIEW	46
EUT – BOTTOM VIEW	47
EUT –LEFT SIDE VIEW	47
EUT – RIGHT SIDE VIEW	48
EUT –COVER OFF VIEW 1	48
EUT –COVER OFF VIEW 2	49
EUT –COVER OFF VIEW 3	49
EUT – MAIN BOARD TOP VIEW	50
EUT – MAIN BOARD TOP SHIELDING OFF VIEW	50
EUT – MAIN BOARD BOTTOM VIEW	51
EUT – MAIN BOARD BOTTOM SHIELDING OFF VIEW	51
EUT – SUB BOARD TOP VIEW	52
EUT – SUB BOARD TOP SHIELDING OFF VIEW	52
EUT – SUB BOARD BOTTOM VIEW	53
EUT – MAIN BOARD BOTTOM SHIELDING OFF VIEW	53
EUT – IC CHIP VIEW	54
EUT – BATTERY TOP VIEW	54
EUT – BATTERY BOTTOM VIEW.....	55
EUT – USB CABLE & ADAPTER VIEW.....	55
EUT – USB CABLE VIEW	56
EUT – ADAPTER LABEL VIEW	56
EXHIBIT D - TEST SETUP PHOTOGRAPHS.....	57
RADIATED SPURIOUS EMISSIONS VIEW (BELOW 1 GHZ)	57
RADIATED SPURIOUS EMISSIONS VIEW (ABOVE 1 GHZ)	57
PRODUCT SIMILARITY DECLARATION LETTER.....	58

GENERAL INFORMATION

Product Description for Equipment under Test (EUT)

The *Shenzhen East Xinyi Electronic Techonology Co., Ltd.*'s product, model number: *EX8535* or the "EUT" in this report was a *Brondi 530 4G HD*, which was measured approximately: 143 mm (L) × 72 mm (W) × 8 mm (H), rated with input voltage: DC 3.8V rechargeable Li-ion battery or DC 5.0V from the adapter.

Adapter Information:

Model: KS15002R

Input: AC 100-240V, 50/60Hz, 0.2A

Output: DC 5.0V, 1000mA

Note: The series product, model EX8537 and EX8535 are electrically identical, they are just different from model number and process of rear cover due to marketing purposes. Detailed information is stated and guaranteed by the applicant which was explained in the attached declaration letter.

**All measurement and test data in this report was gathered from production sample serial number: 1507305 (Assigned by BACL, Shenzhen). The EUT supplied by the applicant was received on 2015-12-08.*

Objective

This report is prepared on behalf of *Shenzhen East Xinyi Electronic Techonology Co., Ltd.* in accordance with ETSI EN 300 328 V1.9.1 (2015-02), Electromagnetic compatibility and Radio spectrum Matters (ERM); Wideband transmission systems; Data transmission equipment operating in the 2,4 GHz ISM band and using wide band modulation techniques; Harmonized EN covering the essential requirements of article 3.2 of the R&TTE Directive

The objective is to determine the compliance of EUT with ETSI EN 300 328 V1.9.1 (2015-02).

Related Submittal(s)/Grant(s)

No related submittal(s).

Test Methodology

All measurements contained in this report were conducted with ETSI EN 300 328 V1.9.1 (2015-02).

Measurement uncertainty with radiated emission is 5.91 dB for 30MHz-1GHz and 4.92 dB for above 1GHz, 1.95dB for conducted measurement.

Test Facility

The test site used by Bay Area Compliance Laboratories Corp. (Shenzhen) to collect test data is located on the 6/F, the 3rd Phase of WanLi Industrial Building, ShiHua Road, FuTian Free Trade Zone Shenzhen, Guangdong, China.

Test site at Bay Area Compliance Laboratories Corp. (Shenzhen) has been fully described in reports submitted to the Federal Communication Commission (FCC). The details of these reports have been found to be in compliance with the requirements of Section 2.948 of the FCC Rules on October 31, 2013. The facility also complies with the radiated and AC line conducted test site criteria set forth in ANSI C63.4-2014.

The Federal Communications Commission has the reports on file and is listed under FCC Registration No.: 382179. The test site has been approved by the FCC for public use and is listed in the FCC Public Access Link (PAL) database.

FINAL

SYSTEM TEST CONFIGURATION

Description of Test Configuration

For 802.11b, 802.11g and 802.11n-HT20 mode, 13 channels are provided to testing:

Channel	Frequency (MHz)	Channel	Frequency (MHz)
1	2412	8	2447
2	2417	9	2452
3	2422	10	2457
4	2427	11	2462
5	2432	12	2467
6	2437	13	2472
7	2442	/	/

EUT was tested with Channel 1, 7 and 13.

For 802.11n-HT40 mode, 9 channels are provided to testing:

Channel	Frequency (MHz)	Channel	Frequency (MHz)
1	2422	6	2447
2	2427	7	2452
3	2432	8	2457
4	2437	9	2462
5	2442	/	/

EUT was tested with Channel 1, 5 and 9.

The worst-case data rates are determined to be as follows for each mode based upon investigation by measuring the average power and PSD across all data rates bandwidths, and modulations.

EUT Exercise Software

The test was performed under:

802.11b: Data rate: 1 Mbps, power level: 8

802.11g: Data rate: 6 Mbps, power level: 4

802.11n-HT20: Data rate: MCS0, power level: 4

802.11n-HT40: Data rate: MCS0, power level: 4

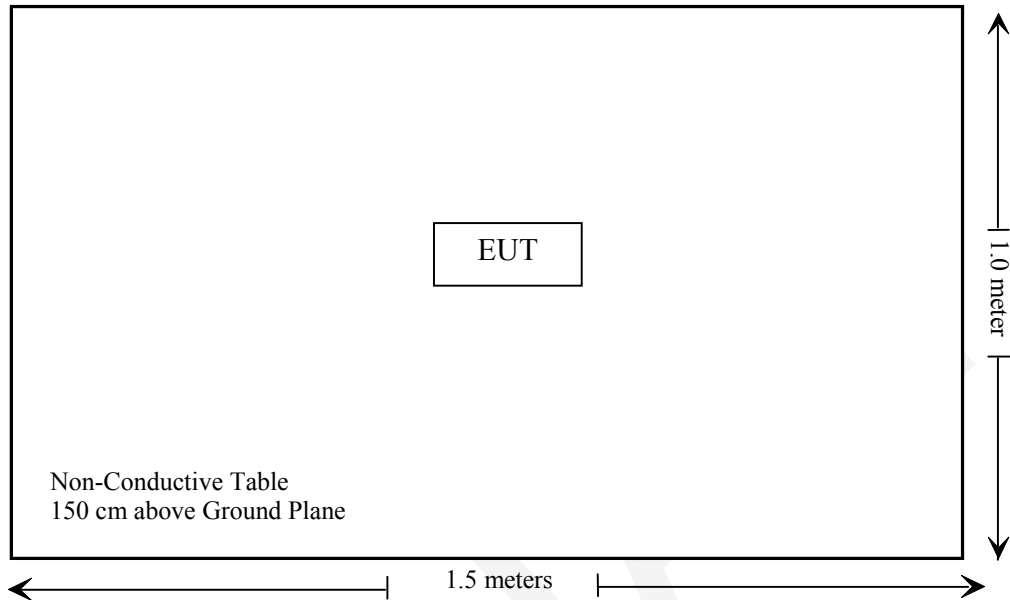
Special Accessories

No special accessory.

Equipment Modifications

No modification was made to the EUT.

Block Diagram of Test Setup



SUMMARY OF TEST RESULTS

ETSI EN 300 328 V1.9.1 (2015-02)	Description of Test	Test Result
§ 4.3.2.2	RF output power	Compliance
§ 4.3.2.3	Power Spectral Density	Compliance
§ 4.3.2.4	Duty Cycle, Tx-sequence, Tx-gap	Not Applicable
§ 4.3.2.5	Medium Utilisation (MU) factor	Not Applicable
§ 4.3.2.6	Adaptivity	Not Applicable*
§ 4.3.2.7	Occupied Channel Bandwidth	Compliance
§ 4.3.2.8	Transmitter unwanted emissions in the out-of-band domain	Compliance
§ 4.3.2.9	Transmitter unwanted emissions in the spurious domain	Compliance
§ 4.3.2.10	Receiver spurious emissions	Compliance
§ 4.3.2.11	Receiver Blocking	Not Applicable*
§ 4.3.2.12	Geo-location capability	Not Applicable**

Note:

The supplier declared that the equipment is adaptive equipment

Not Applicable: This item only for non-adaptive mode

Not Applicable*: The test item does not apply for equipment within a maximum RF output power level of less than 10 dBm (e.i.r.p).

Not Applicable** – The supplier declared that the equipment has no this function.

ETSI EN 300 328 V1.9.1 (2015-02) §4.3.2.2 – RF OUTPUT POWER

Applicable Standard

This requirement applies to all types of equipment using wide band modulations other than FHSS.

The RF output power is defined as the mean equivalent isotropic radiated power (e.i.r.p.) of the equipment during a transmission burst.

For adaptive equipment using wide band modulations other than FHSS, the maximum RF output power shall be 20 dBm.

The maximum RF output power for non-adaptive equipment shall be declared by the supplier and shall not exceed 20 dBm. See clause 5.3.1 m). For non-adaptive equipment using wide band modulations other than FHSS, the maximum RF output power shall be equal to or less than the value declared by the supplier.

This limit shall apply for any combination of power level and intended antenna assembly.

Test Procedure

The test procedure shall be as follows:

Step 1:

- Use a fast power sensor suitable for 2,4 GHz and capable of minimum 1 MS/s.
- Use the following settings:
 - Sample speed 1 MS/s or faster.
 - The samples shall represent the RMS power of the signal.
 - Measurement duration: For non-adaptive equipment: equal to the observation period defined in clause 4.3.1.3.2 or clause 4.3.2.4.2. For adaptive equipment, the measurement duration shall be long enough to ensure a minimum number of bursts (at least 10) are captured.

NOTE 1: For adaptive equipment, to increase the measurement accuracy, a higher number of bursts may be used.

Step 2:

- For conducted measurements on devices with one transmit chain:
 - Connect the power sensor to the transmit port, sample the transmit signal and store the raw data. Use these stored samples in all following steps.
- For conducted measurements on devices with multiple transmit chains:
 - Connect one power sensor to each transmit port for a synchronous measurement on all transmit ports.
 - Trigger the power sensors so that they start sampling at the same time. Make sure the time difference between the samples of all sensors is less than 500 ns.
 - For each individual sampling point (time domain), sum the coincident power samples of all ports and store them. Use these summed samples in all following steps.

Step 3:

- Find the start and stop times of each burst in the stored measurement samples.
The start and stop times are defined as the points where the power is at least 30 dB below the highest value of the stored samples in step 2.

NOTE 2: In case of insufficient dynamic range, the value of 30 dB may need to be reduced appropriately.

Step 4:

- Between the start and stop times of each individual burst calculate the RMS power over the burst using the formula below. Save these Pburst values, as well as the start and stop times for each burst.

$$P_{burst} = \frac{1}{k} \sum_{n=1}^k P_{sample}(n)$$

with 'k' being the total number of samples and 'n' the actual sample number

Step 5:

- The highest of all Pburst values (value "A" in dBm) will be used for maximum e.i.r.p. calculations.

Step 6:

- Add the (stated) antenna assembly gain "G" in dBi of the individual antenna.
- If applicable, add the additional beamforming gain "Y" in dB.
- If more than one antenna assembly is intended for this power setting, the maximum overall antenna gain (G or G + Y) shall be used.
- The RF Output Power (P) shall be calculated using the formula below:

$$P = A + G + Y$$

- This value, which shall comply with the limit given in clause 4.3.1.2.3 or clause 4.3.2.2.3, shall be recorded in the test report.

Test Equipment List and Details

Manufacturer	Description	Model	Serial Number	Calibration Date	Calibration Due Date
Agilent	P-Series Power Meter	N1912A	MY5000448	2015-11-03	2016-11-03
Agilent	Wideband Power Sensor	N1921A	ESR3	2015-12-12	2016-12-11
ESPEC	Temperature & Humidity Chamber	EL-10KA	09107726	2015-11-01	2016-10-31

* **Statement of Traceability:** Bay Area Compliance Laboratories Corp. (Shenzhen) attests that all calibrations have been performed in accordance to requirements, traceable to National Primary Standards and International System of Units (SI).

Test Data

Environmental Conditions

Temperature:	23 °C
Relative Humidity:	50 %
ATM Pressure:	101.0 kPa

The testing was performed by Haiguo Li on 2015-12-14.

Test Mode: Transmitting

802.11b Mode

Test Condition			Average Output Power (dBm)	Antenna Gain (dBi)	EIRP (dBm)	Limits (dBm)	Test Results
Channel	Temperature (°C)	Voltage (V _{DC})					
Low	-20	3.8	7.60	1.00	8.60	20	Compliant
	+25		7.63	1.00	8.63	20	Compliant
	+55		7.61	1.00	8.61	20	Compliant
Middle	-20	3.8	7.44	1.00	8.44	20	Compliant
	+25		7.47	1.00	8.47	20	Compliant
	+55		7.43	1.00	8.43	20	Compliant
High	-20	3.8	7.26	1.00	8.26	20	Compliant
	+25		7.29	1.00	8.29	20	Compliant
	+55		7.26	1.00	8.26	20	Compliant

802.11g Mode

Test Condition			Average Output Power (dBm)	Antenna Gain (dBi)	EIRP (dBm)	Limits (dBm)	Test Results
Channel	Temperature (°C)	Voltage (V _{DC})					
Low	-20	3.8	7.30	1.00	8.30	20	Compliant
	+25		7.32	1.00	8.32	20	Compliant
	+55		7.29	1.00	8.29	20	Compliant
Middle	-20	3.8	7.30	1.00	8.30	20	Compliant
	+25		7.32	1.00	8.32	20	Compliant
	+55		7.30	1.00	8.30	20	Compliant
High	-20	3.8	7.28	1.00	8.28	20	Compliant
	+25		7.31	1.00	8.31	20	Compliant
	+55		7.28	1.00	8.28	20	Compliant

802.11n-HT20 Mode

Test Condition			Average Output Power (dBm)	Antenna Gain (dBi)	EIRP (dBm)	Limits (dBm)	Test Results
Channel	Temperature (°C)	Voltage (V _{DC})					
Low	-20	3.8	7.31	1.00	8.31	20	Compliant
	+25		7.34	1.00	8.34	20	Compliant
	+55		7.31	1.00	8.31	20	Compliant
Middle	-20	3.8	7.29	1.00	8.29	20	Compliant
	+25		7.31	1.00	8.31	20	Compliant
	+55		7.28	1.00	8.28	20	Compliant
High	-20	3.8	7.29	1.00	8.29	20	Compliant
	+25		7.32	1.00	8.32	20	Compliant
	+55		7.29	1.00	8.29	20	Compliant

802.11n-HT40 Mode

Test Condition			Average Output Power (dBm)	Antenna Gain (dBi)	EIRP (dBm)	Limits (dBm)	Test Results
Channel	Temperature (°C)	Voltage (V _{DC})					
Low	-20	3.8	7.49	1.00	8.49	20	Compliant
	+25		7.51	1.00	8.51	20	Compliant
	+55		7.47	1.00	8.47	20	Compliant
Middle	-20	3.8	7.43	1.00	8.43	20	Compliant
	+25		7.46	1.00	8.46	20	Compliant
	+55		7.43	1.00	8.43	20	Compliant
High	-20	3.8	7.42	1.00	8.42	20	Compliant
	+25		7.44	1.00	8.44	20	Compliant
	+55		7.40	1.00	8.40	20	Compliant

ETSI EN 300 328 V1.9.1 (2015-02) §4.3.2.3 - POWER SPECTRAL DENSITY

Applicable Standard

According to ETSI EN 300 328 V1.9.1 (2015-02) §4.3.2.3.2, this requirement applies to all types of equipment using wide band modulations other than FHSS.

The Power Spectral Density is the mean equivalent isotropically radiated power (e.i.r.p.) spectral density in a 1 MHz bandwidth during a transmission burst.

For equipment using wide band modulations other than FHSS, the maximum Power Spectral Density is limited to 10 dBm per MHz.

Test Procedure

The transmitter shall be connected to a spectrum analyser and the Power Spectral Density as defined in clause 4.3.2.3 shall be measured and recorded.

The test procedure shall be as follows:

Step 1:

Connect the UUT to the spectrum analyser and use the following settings:

- Start Frequency: 2 400 MHz
- Stop Frequency: 2 483.5 MHz
- Resolution BW: 10 kHz
- Video BW: 30 kHz
- Sweep Points: > 8 350

NOTE: For spectrum analysers not supporting this number of sweep points, the frequency band may be segmented.

- Detector: RMS
- Trace Mode: Max Hold
- Sweep time: 10 s; the sweep time may be increased further until a value where the sweep time has no impact on the RMS value of the signal

For non-continuous signals, wait for the trace to stabilize. Save the data (trace data) set to a file.

Step 2:

For conducted measurements on smart antenna systems using either operating mode 2 or operating mode 3 (see clause 5.1.3.2), repeat the measurement for each of the transmit ports. For each sampling point (frequency domain), add up the coincident power values (in mW) for the different transmit chains and use this as the new data set.

Step 3:

Add up the values for power for all the samples in the file using the formula below.

$$P_{Sum} = \frac{1}{k} \sum_{n=1}^k P_{sample}(n)$$

with 'k' being the total number of samples and 'n' the actual sample number

Step 4:

Normalize the individual values for power (in dBm) so that the sum is equal to the RF Output Power (e.i.r.p.) measured in clause 5.3.2 and save the corrected data. The following formulas can be used:

$$C_{Corr} = P_{Sum} - P_{e.i.r.p}$$

$$P_{Samplecorr}(n) = P_{Sample}(n) - C_{Corr}$$

with 'n' being the actual sample number

Step 5:

Starting from the first sample $P_{Samplecorr}(n)$ (lowest frequency), add up the power (in mW) of the following samples representing a 1 MHz segment and record the results for power and position (i.e. sample #1 to sample #100). This is the Power Spectral Density (e.i.r.p.) for the first 1 MHz segment which shall be recorded.

Step 6:

Shift the start point of the samples added up in step 5 by one sample and repeat the procedure in step 5 (i.e. sample #2 to sample #101).

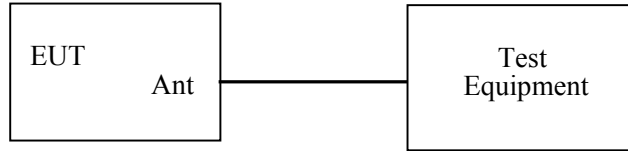
Step 7:

Repeat step 6 until the end of the data set and record the Power Spectral Density values for each of the 1 MHz segments.

From all the recorded results, the highest value is the maximum Power Spectral Density for the UUT. This value, which shall comply with the limit given in clause 4.3.2.3.3, shall be recorded in the test report.

Test Setup Block diagram

802.11b/g/n



Test Equipment List and Details

Manufacturer	Description	Model	Serial Number	Calibration Date	Calibration Due Date
Rohde & Schwarz	EMI Test Receiver	ESR	1316.3003K0 3-101746-zn	2015-06-13	2016-06-13

* **Statement of Traceability:** Bay Area Compliance Laboratories Corp. (Shenzhen) attests that all calibrations have been performed in accordance to requirements, traceable to National Primary Standards and International System of Units (SI).

Test Data

Environmental Conditions

Temperature:	23 °C
Relative Humidity:	50 %
ATM Pressure:	101.0 kPa

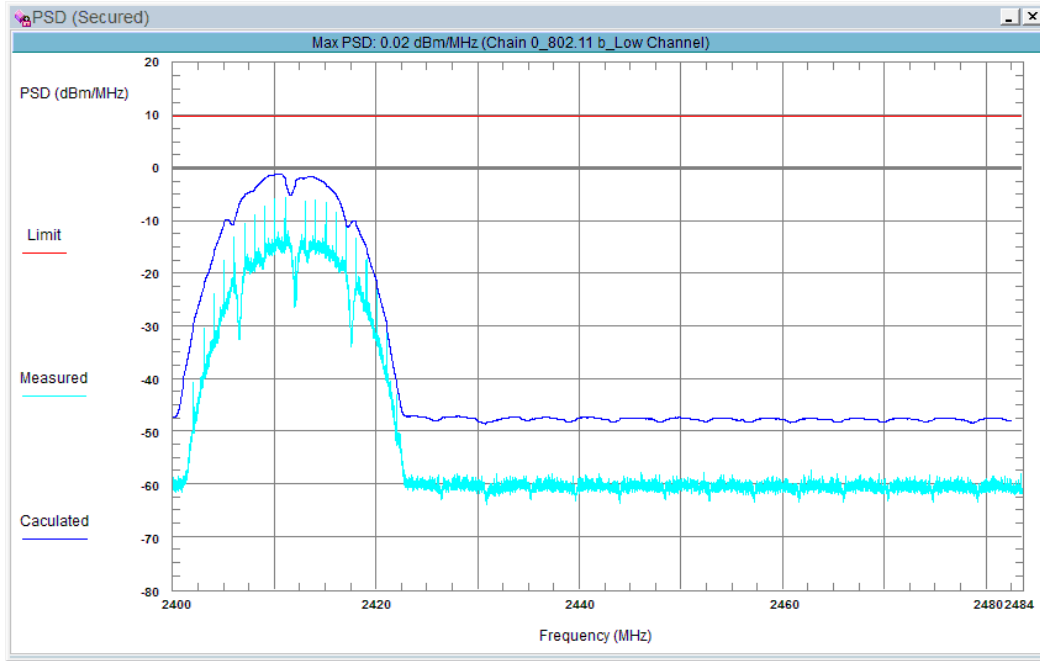
The testing was performed by Haiguo Li on 2015-12-14.

Test Result: Compliant.

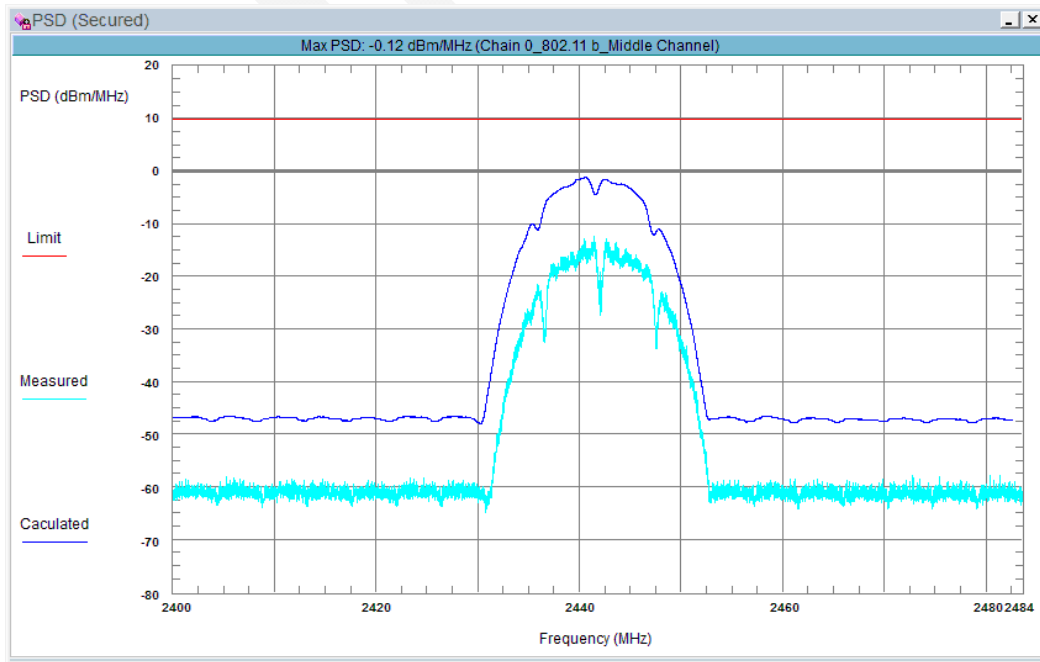
Please refer to following plots.

Test Mode: Transmitting

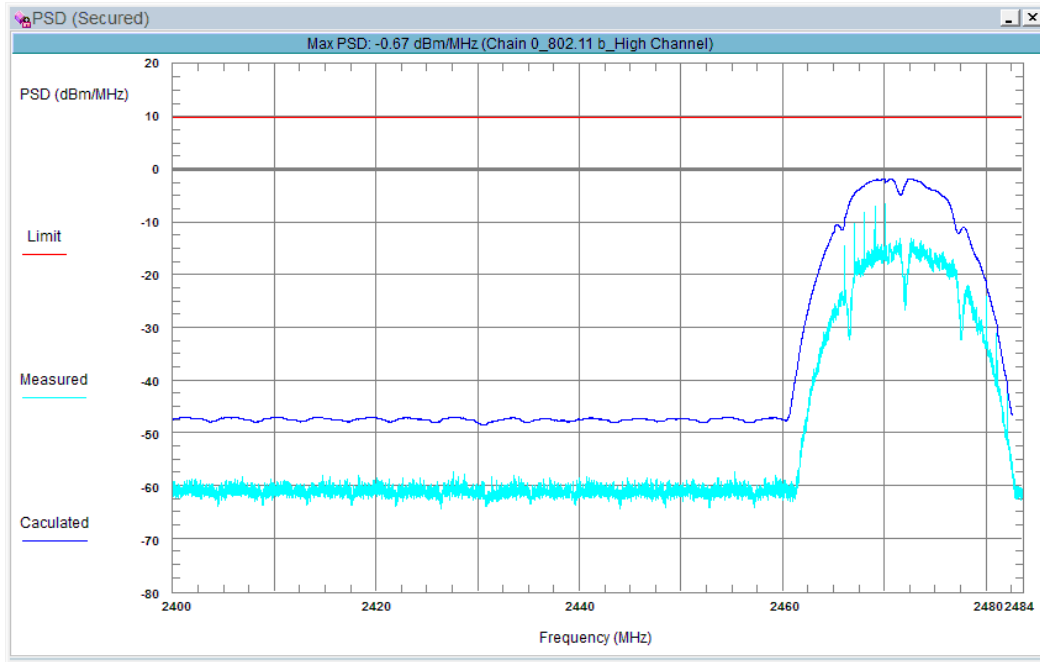
802.11b Mode, Low Channel: 2412 MHz



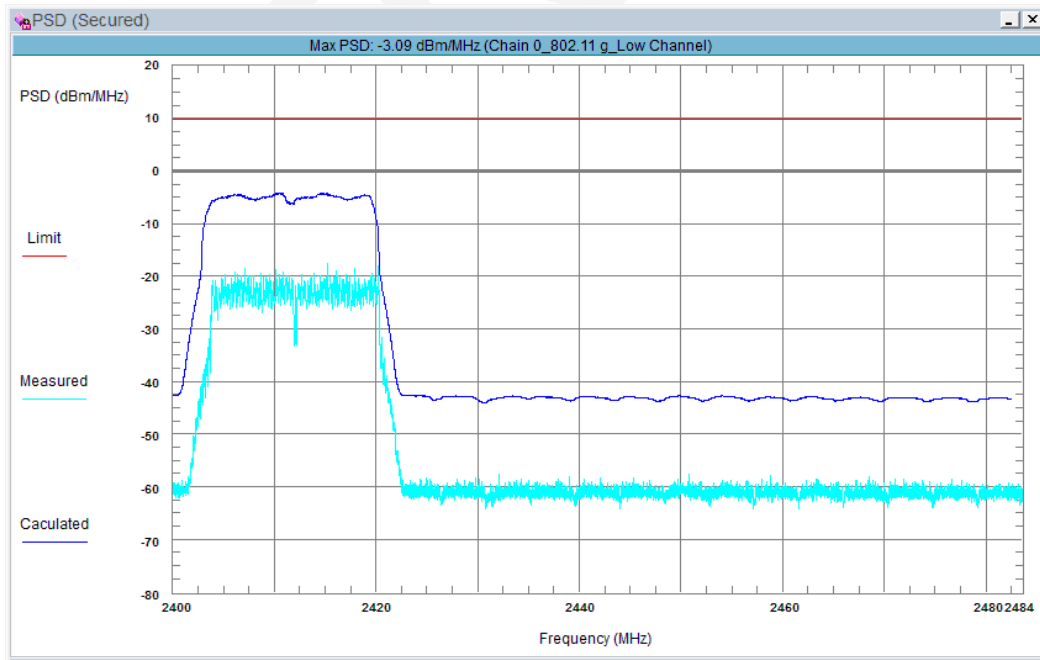
802.11b Mode, Middle Channel: 2442 MHz



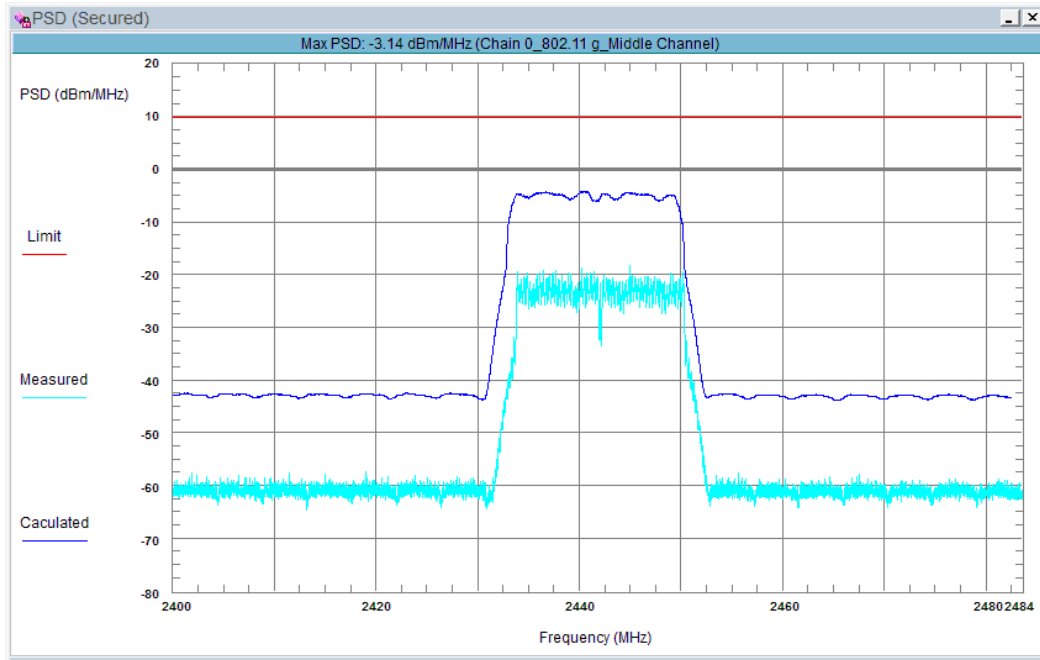
802.11b Mode, High Channel: 2472 MHz



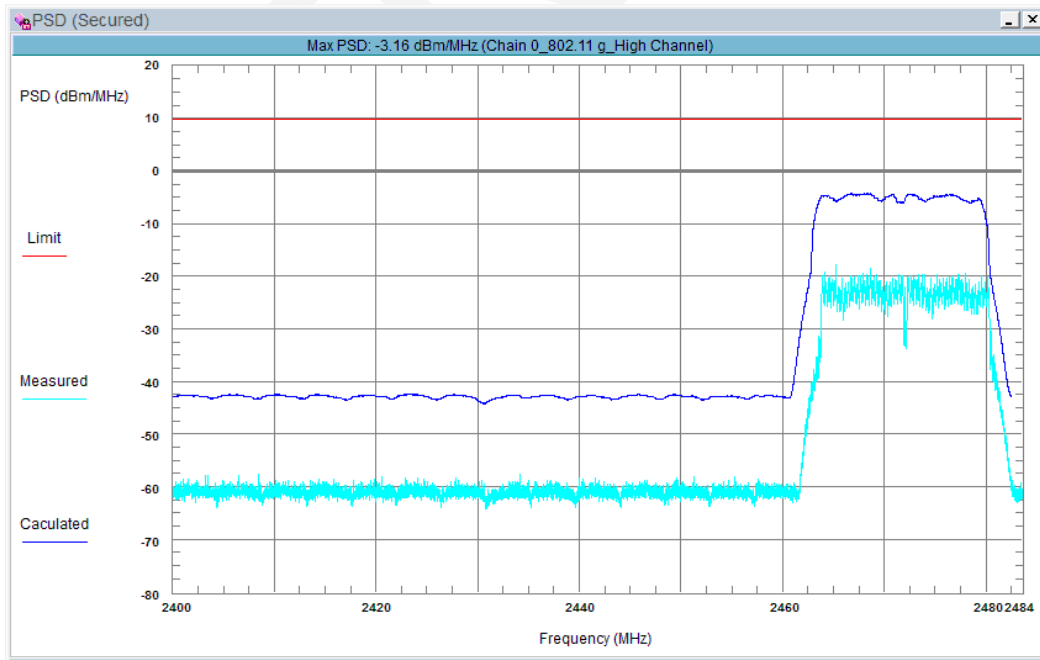
802.11g Mode, Low Channel: 2412 MHz



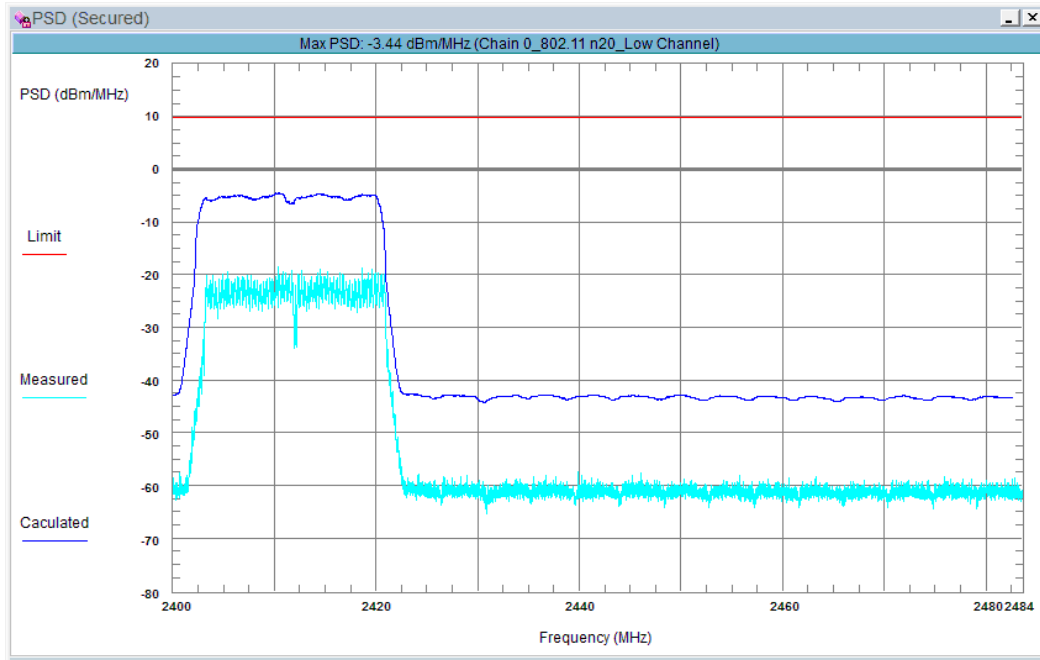
802.11g Mode, Middle Channel: 2442 MHz



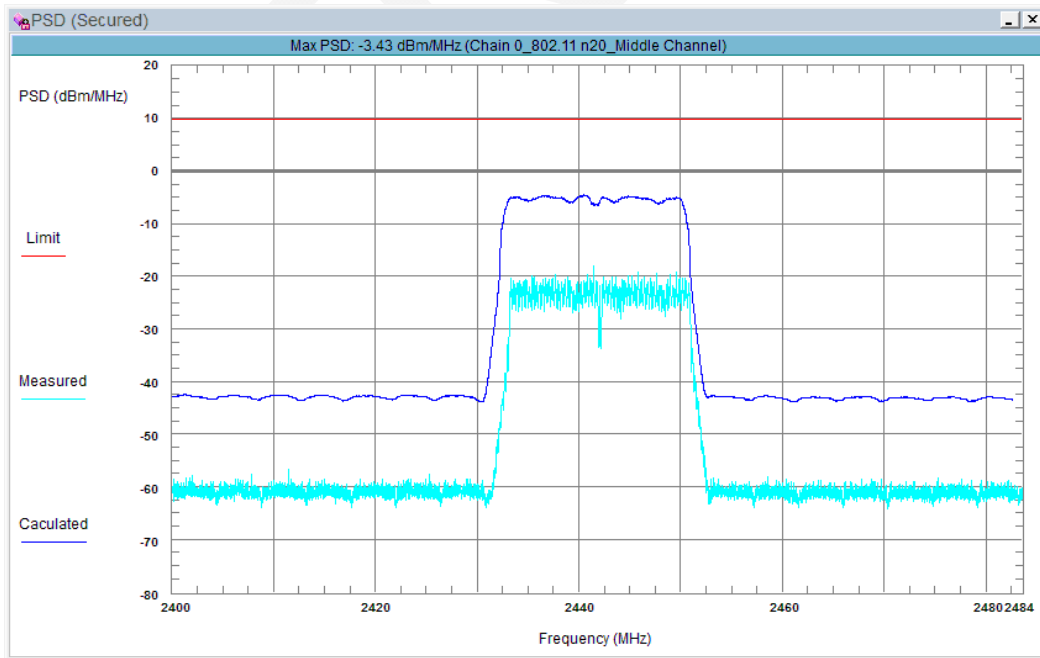
802.11g Mode, High Channel: 2472 MHz



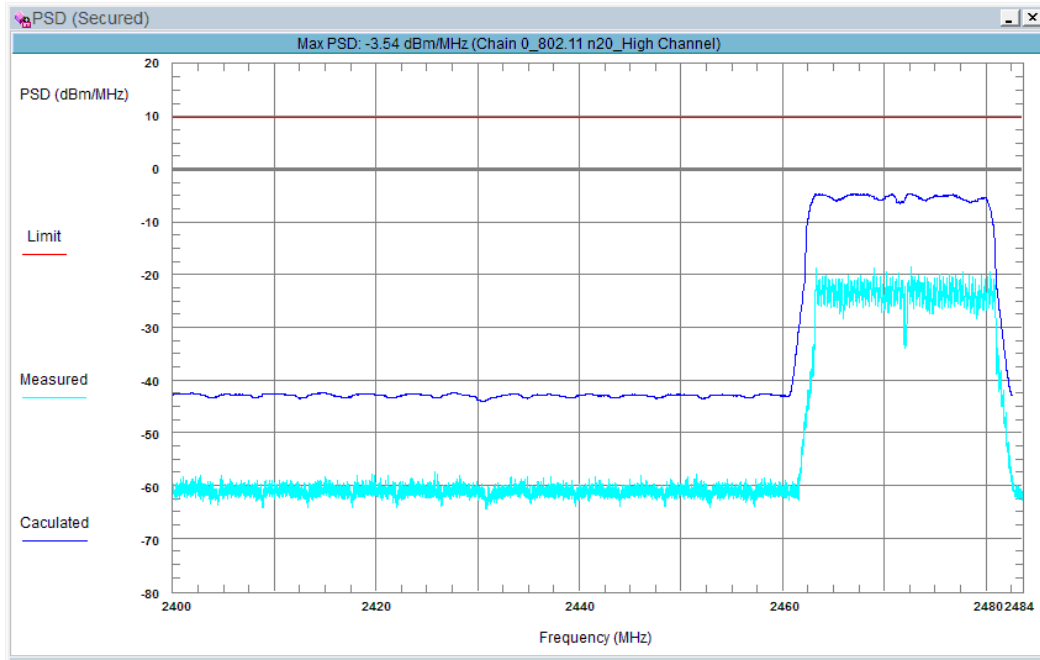
802.11n-HT20 Mode, Low Channel: 2412 MHz



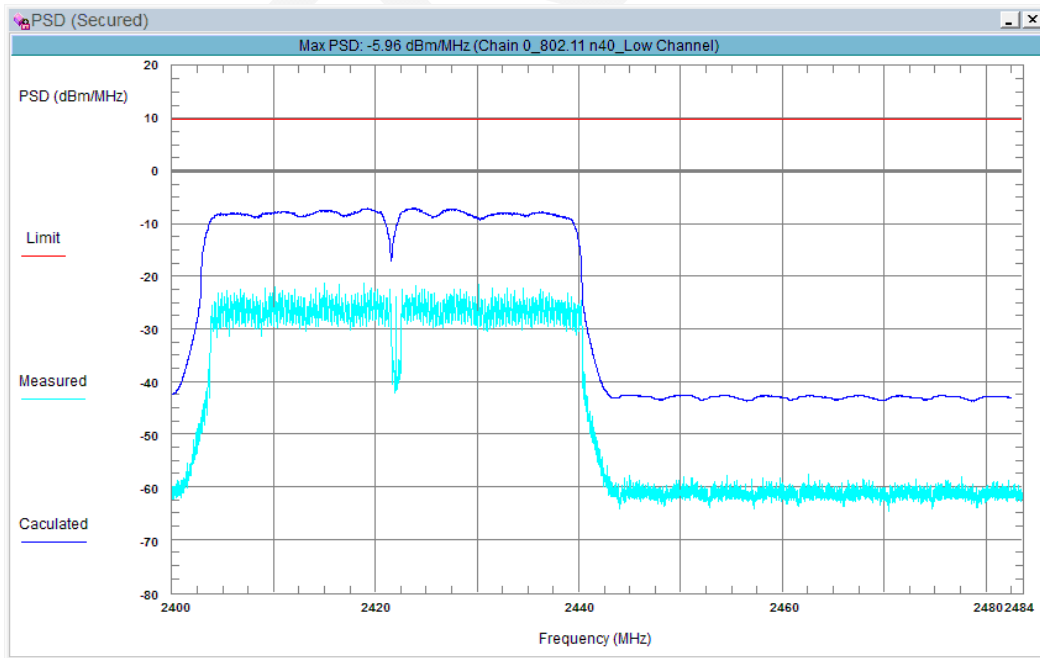
802.11n-HT20 Mode, Middle Channel: 2442 MHz



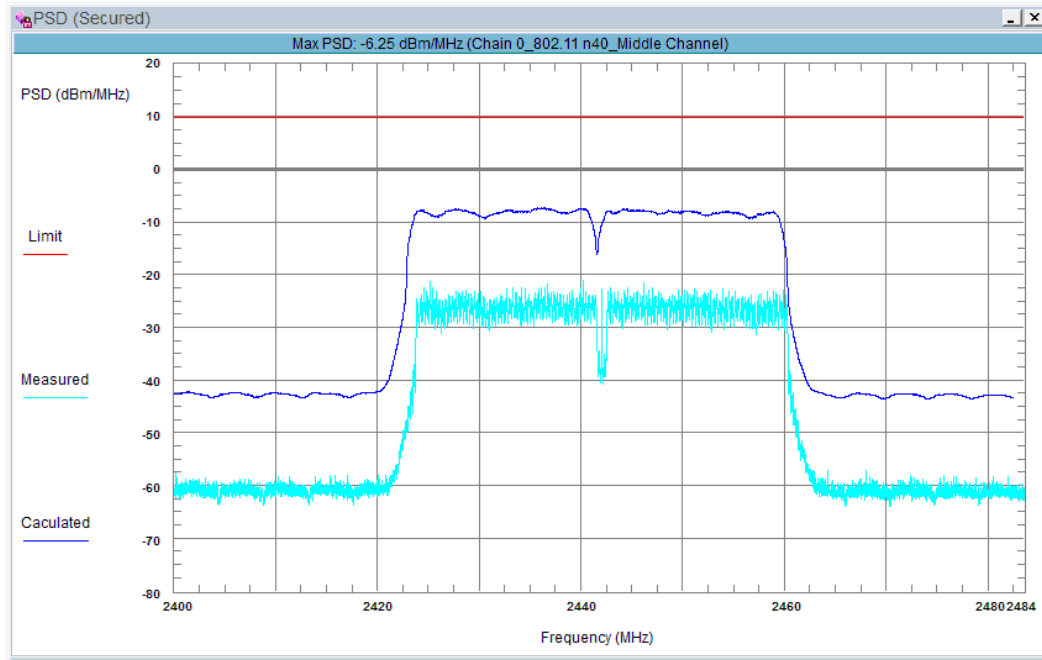
802.11n-HT20 Mode, High Channel: 2472 MHz



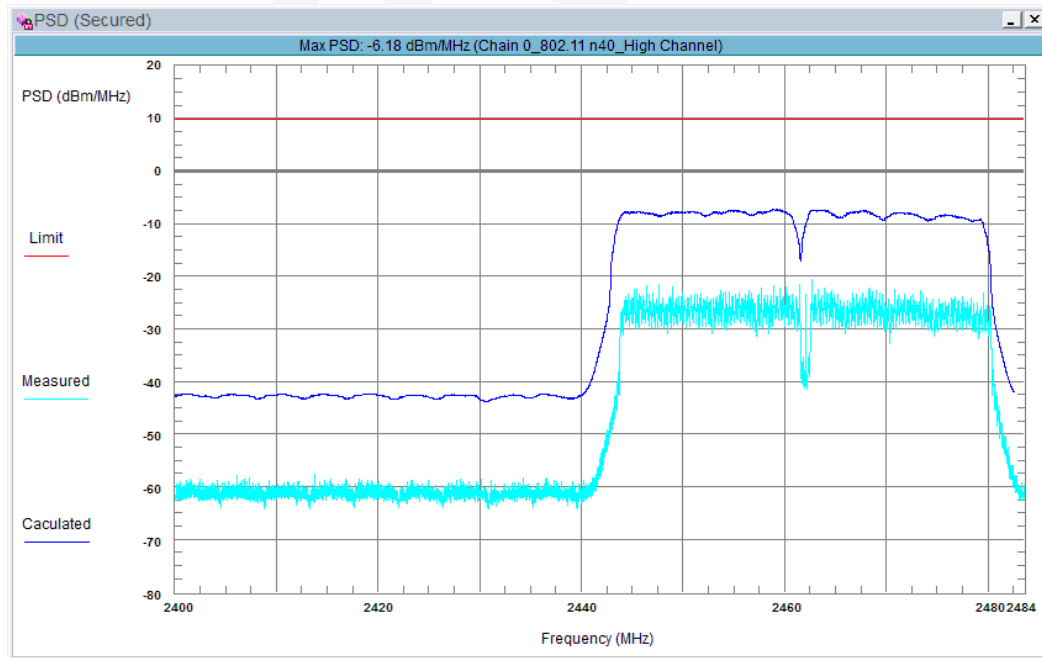
802.11n-HT40 Mode, Low Channel: 2422 MHz



802.11n-HT40 Mode, Middle Channel: 2442 MHz



802.11n-HT40 Mode, High Channel: 2462 MHz



ETSI EN 300 328 V1.9.1 (2015-02) §4.3.2.7 – OCCUPIED CHANNEL BANDWIDTH

Applicable Standard

According to ETSI EN 300 328 V1.9.1 (2015-02) §4.3.2.7.2, the occupied channel bandwidth is the bandwidth that contains 99 % of the power of the signal.

Limit:

The Occupied Channel Bandwidth shall fall completely within the band given in clause 1. In addition, for non-adaptive equipment using wide band modulations other than FHSS and with e.i.r.p greater than 10 dBm, the occupied channel bandwidth shall be less than 20 MHz.

Test Procedure

The measurement procedure shall be as follows:

Step 1:

Connect the UUT to the spectrum analyser and use the following settings:

- Centre Frequency: The centre frequency of the channel under test
- Resolution BW: ~ 1 % of the span without going below 1 %
- Video BW: $3 \times \text{RBW}$
- Frequency Span for frequency hopping equipment: Lowest frequency separation that is used within the hopping sequence
- Frequency Span for other types of equipment: $2 \times \text{Nominal Channel Bandwidth}$ (e.g. 40 MHz for a 20 MHz channel)
- Detector Mode: RMS
- Trace Mode: Max Hold
- Sweep time: 1 s

Step 2:

Wait for the trace to stabilize.

Find the peak value of the trace and place the analyser marker on this peak.

Step 3:

Use the 99 % bandwidth function of the spectrum analyser to measure the Occupied Channel Bandwidth of the UUT. This value shall be recorded.

NOTE: Make sure that the power envelope is sufficiently above the noise floor of the analyser to avoid the noise signals left and right from the power envelope being taken into account by this measurement.

Test Equipment List and Details

Manufacturer	Description	Model	Serial Number	Calibration Date	Calibration Due Date
Rohde & Schwarz	EMI Test Receiver	ESR	1316.3003K03-101746-zn	2015-06-13	2016-06-13

* **Statement of Traceability:** Bay Area Compliance Laboratories Corp. (Shenzhen) attests that all calibrations have been performed in accordance to requirements, traceable to National Primary Standards and International System of Units (SI).

Test Data**Environmental Conditions**

Temperature:	23~25 °C
Relative Humidity:	48~50 %
ATM Pressure:	100.0~101.0 kPa

The testing was performed by Haiguo Li on 2015-12-14 and 2015-12-17.

Test Mode: Transmitting

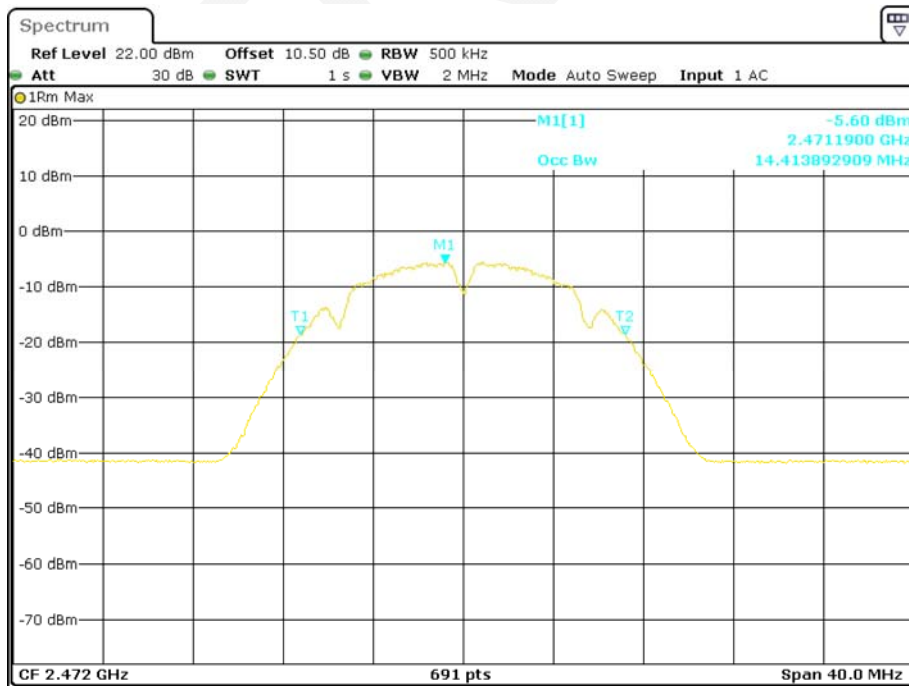
Channel	Frequency (MHz)	Occupied Bandwidth (MHz)
802.11b		
Low	2412	14.41
High	2472	14.41
802.11g		
Low	2412	16.79
High	2472	16.79
802.11n-HT20		
Low	2412	17.95
High	2472	17.95
802.11n-HT40		
Low	2422	36.82
High	2462	36.93

802.11b, Low Channel



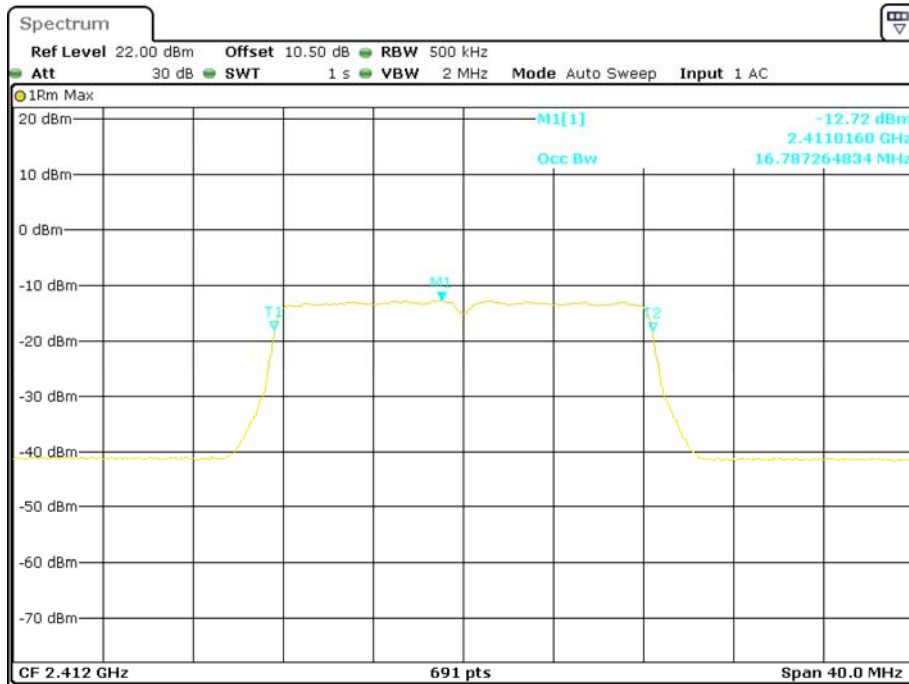
Date: 17.DEC.2015 14:21:53

802.11b, High Channel



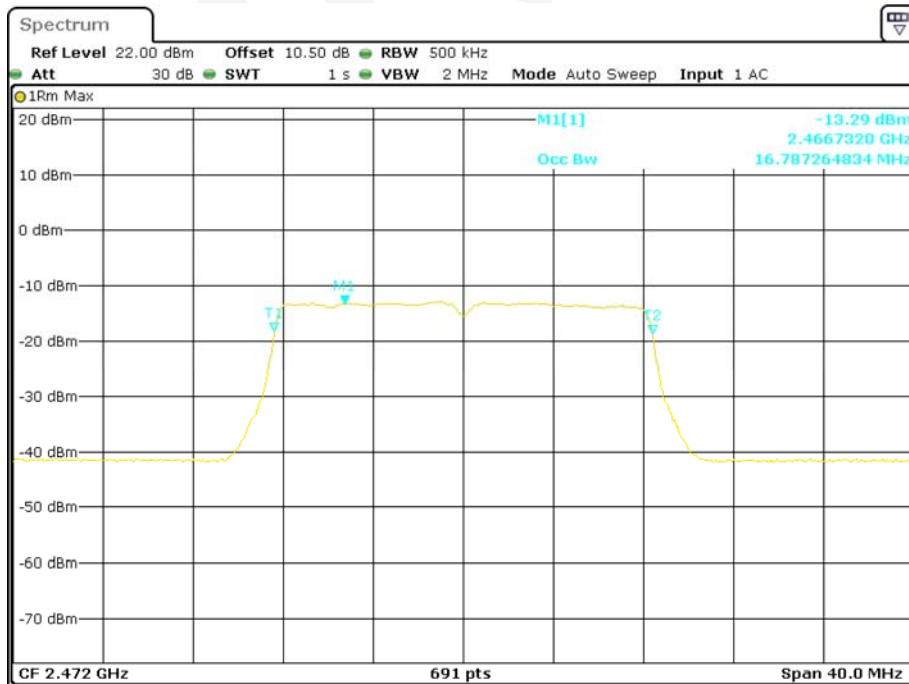
Date: 14.DEC.2015 16:39:38

802.11g, Low Channel



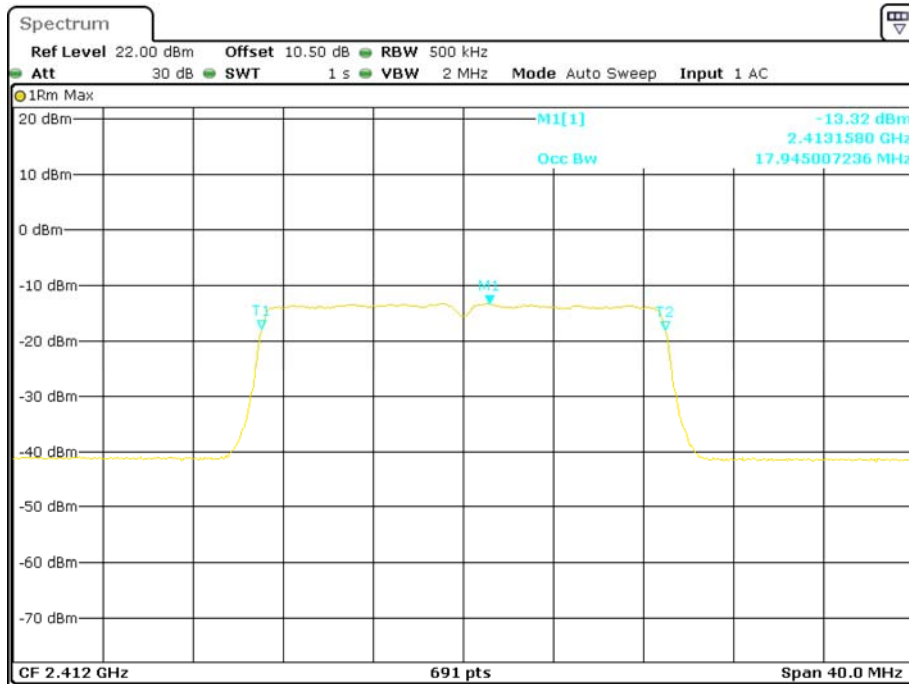
Date: 14.DEC.2015 16:40:12

802.11g, High Channel



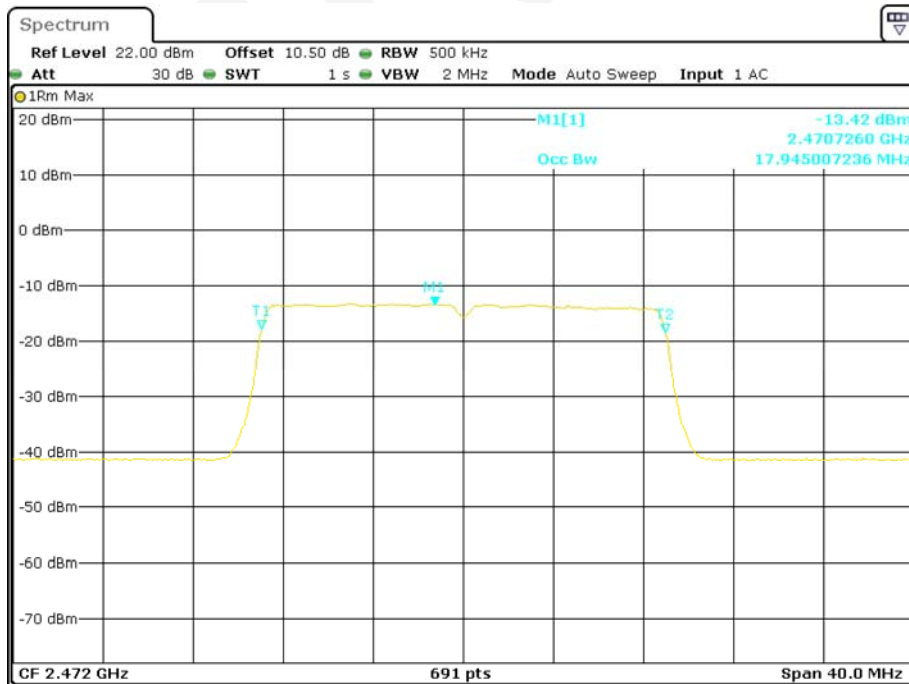
Date: 14.DEC.2015 16:41:09

802.11n-HT20, Low Channel



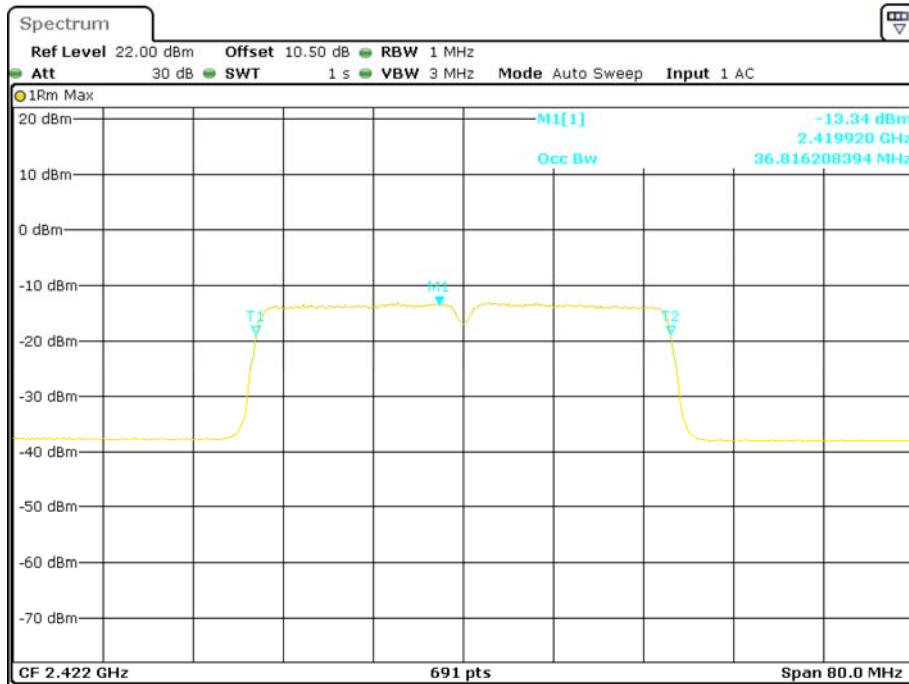
Date: 14.DEC.2015 16:44:11

802.11n-HT20, High Channel



Date: 14.DEC.2015 16:45:13

802.11n-HT40, Low Channel



Date: 14.DEC.2015 16:46:08

802.11n-HT40, High Channel



Date: 14.DEC.2015 16:47:10

ETSI EN 300 328 V1.9.1 (2015-02) §4.3.2.7 – TRANSMITTER UNWANTED EMISSION IN THE OUT-OF-BAND DOMAIN

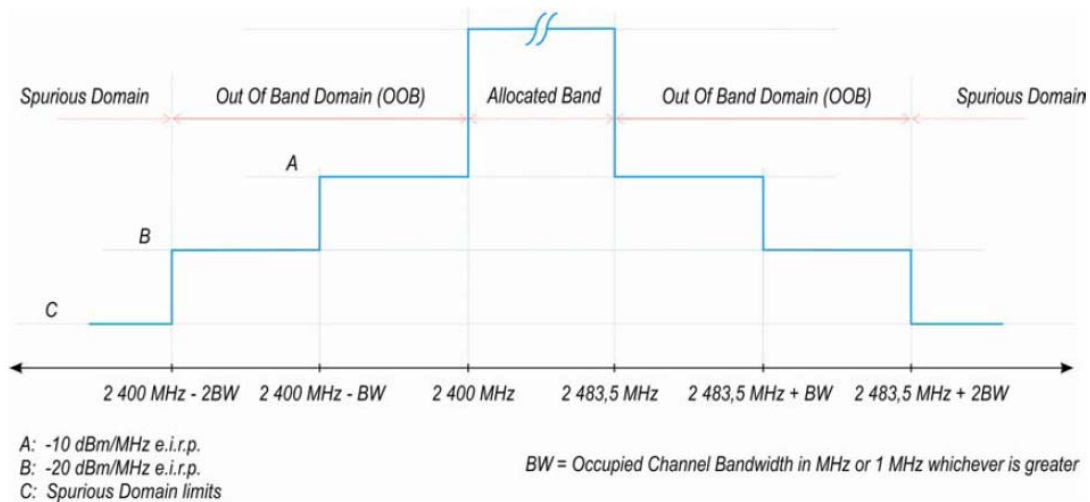
Applicable Standard

According to ETSI EN 300 328 V1.9.1 (2015-02) §4.3.2.8.2, Transmitter unwanted emissions in the out-of-band domain are emissions when the equipment is in Transmit mode, on frequencies immediately outside the necessary bandwidth which results from the modulation process, but excluding spurious emissions.

Limit:

The transmitter unwanted emissions in the out-of-band domain but outside the allocated band, shall not exceed the values provided by the mask in figure 3.

NOTE: Within the 2 400 MHz to 2 483,5 MHz band, the Out-of-band emissions are fulfilled by compliance with the Occupied Channel Bandwidth requirement in clause 4.3.2.7.



Test Procedure

According to ETSI EN 300 328 V1.9.1 (2015-02) §5.3.9.2.1

Test Equipment List and Details

Manufacturer	Description	Model	Serial Number	Calibration Date	Calibration Due Date
Rohde & Schwarz	EMI Test Receiver	ESR	1316.3003K03-101746-zn	2015-06-13	2016-06-13

* **Statement of Traceability:** Bay Area Compliance Laboratories Corp. (Shenzhen) attests that all calibrations have been performed in accordance to requirements, traceable to National Primary Standards and International System of Units (SI).

Test Data

Environmental Conditions

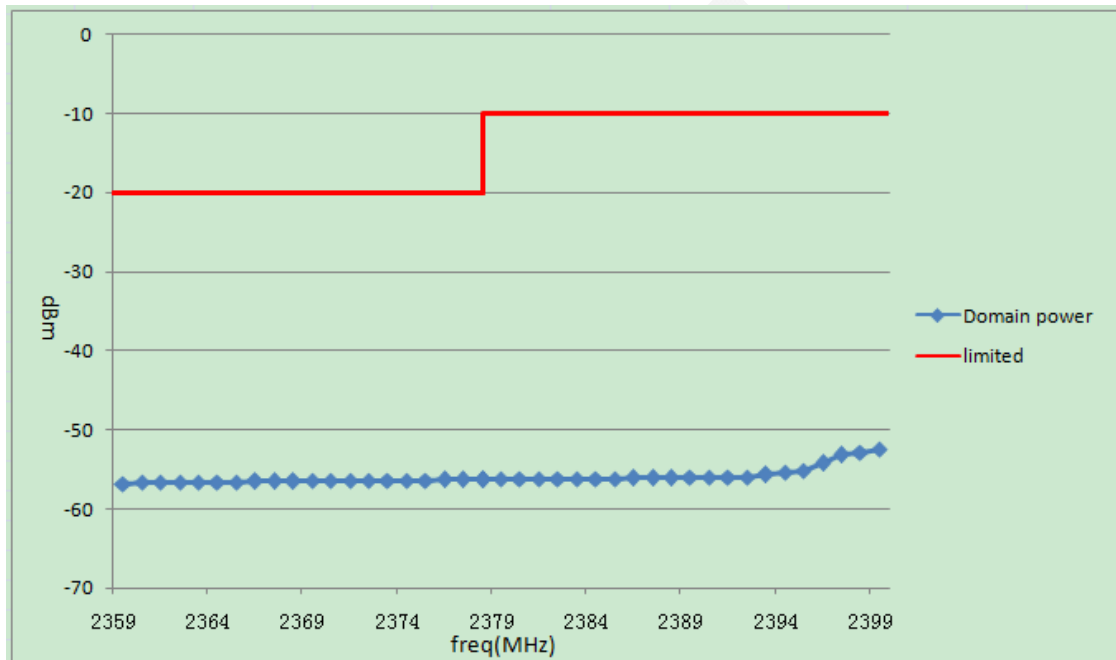
Temperature:	23 °C
Relative Humidity:	50 %
ATM Pressure:	101.0 kPa

The testing was performed by Haiguo Li on 2015-12-14.

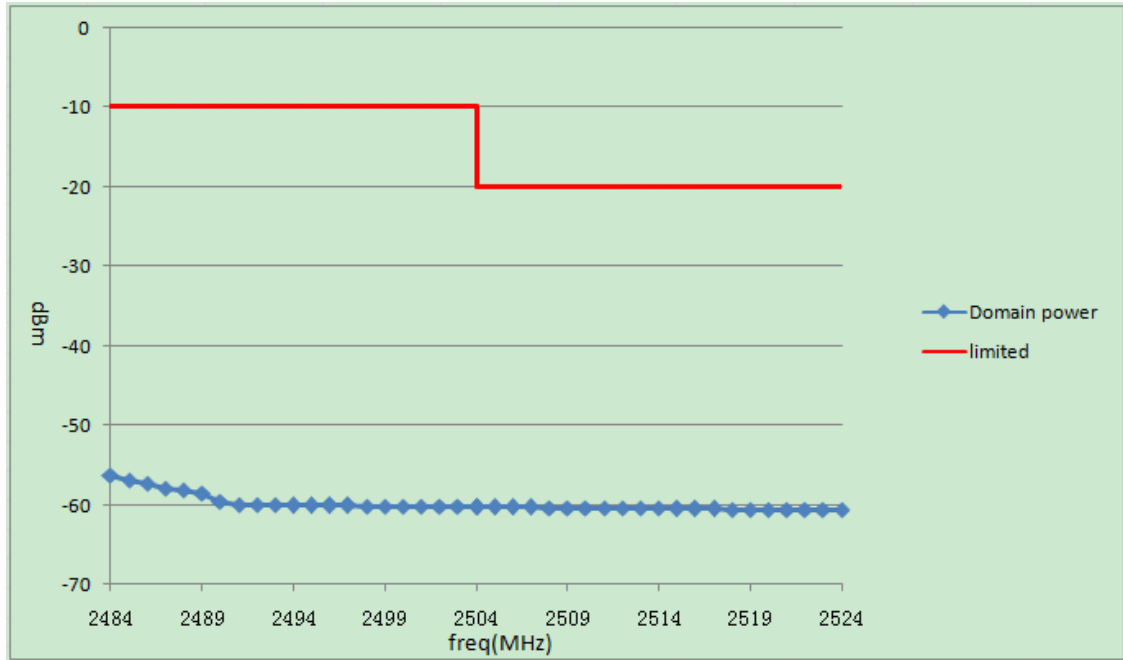
Test Mode: Transmitting

Test Result: Compliant, please refer to following table

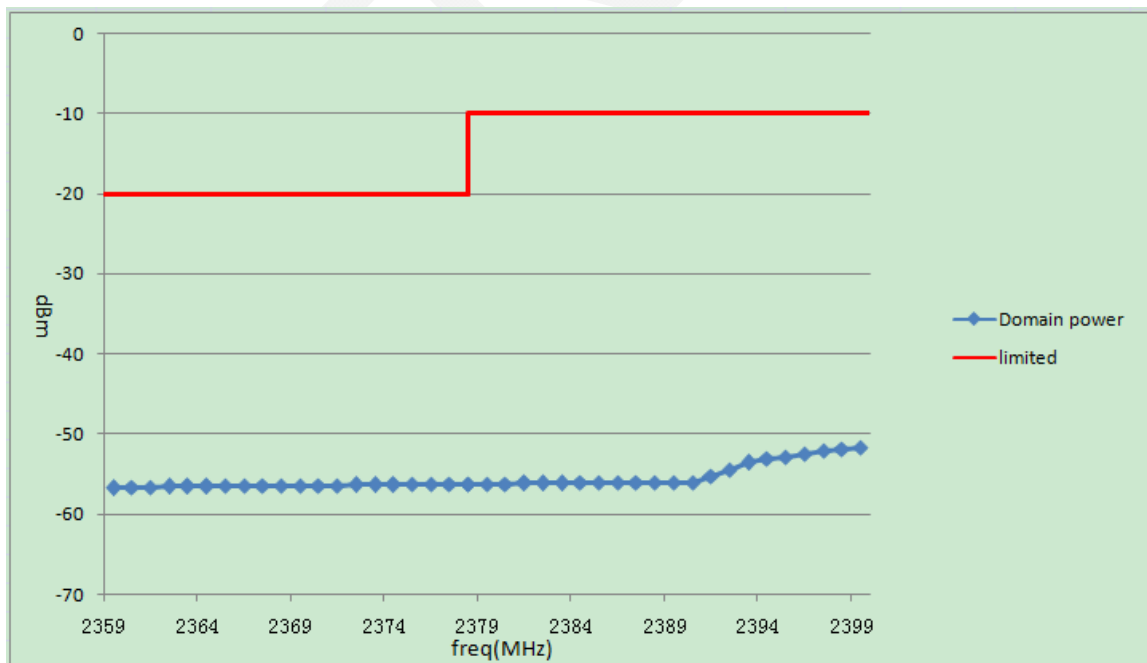
802.11b- Left Side



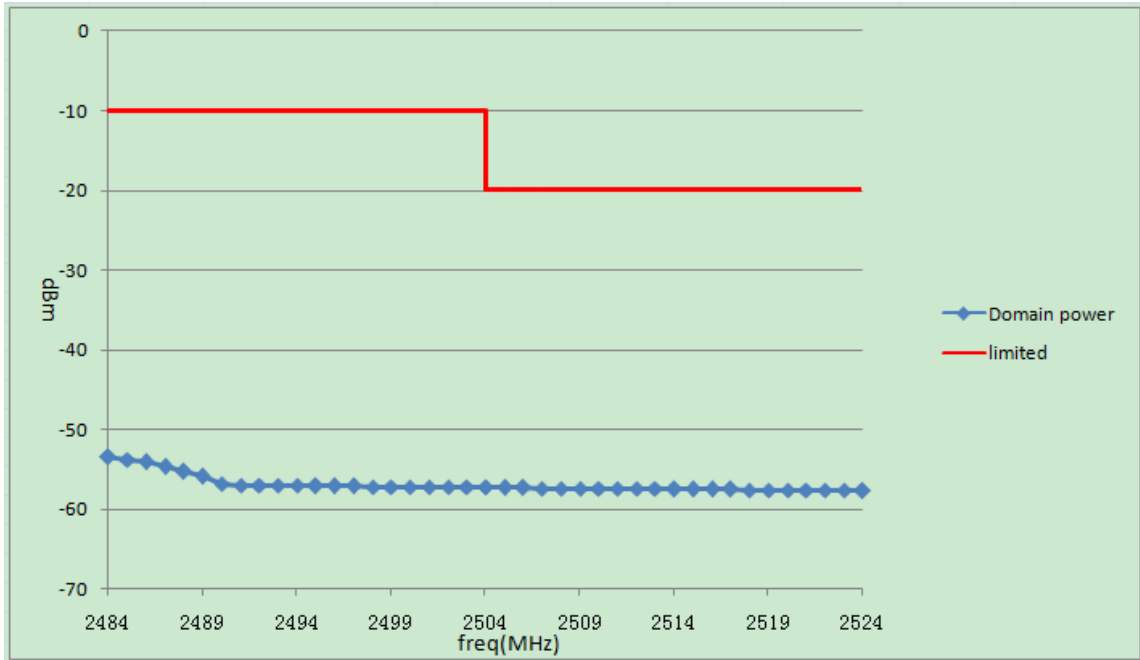
802.11b- Right Side



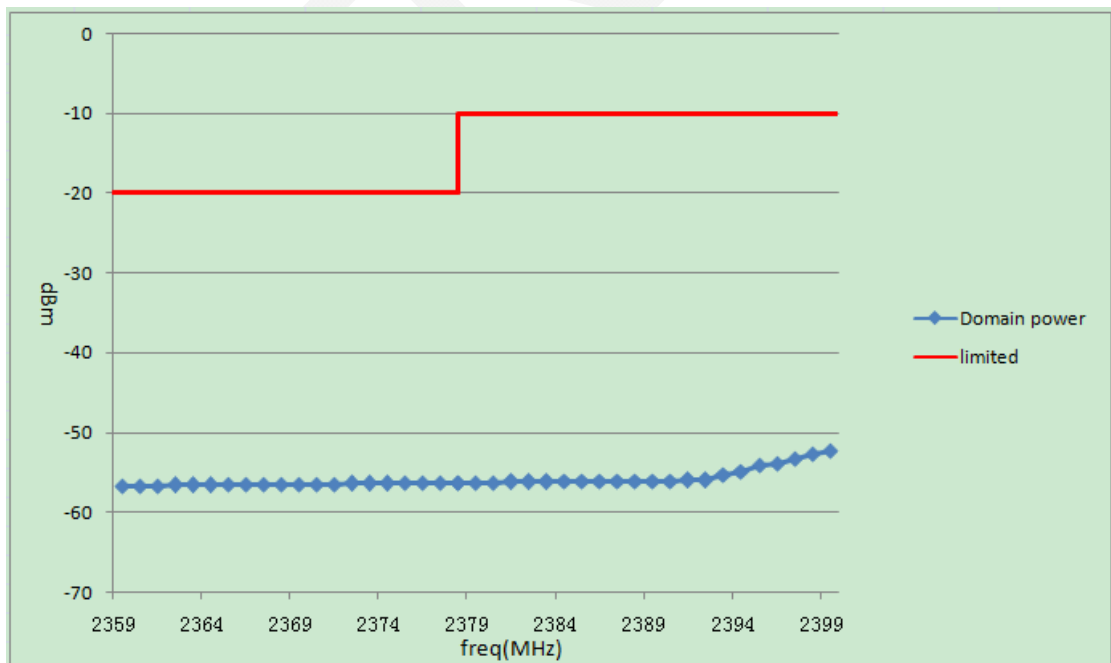
802.11g- Left Side



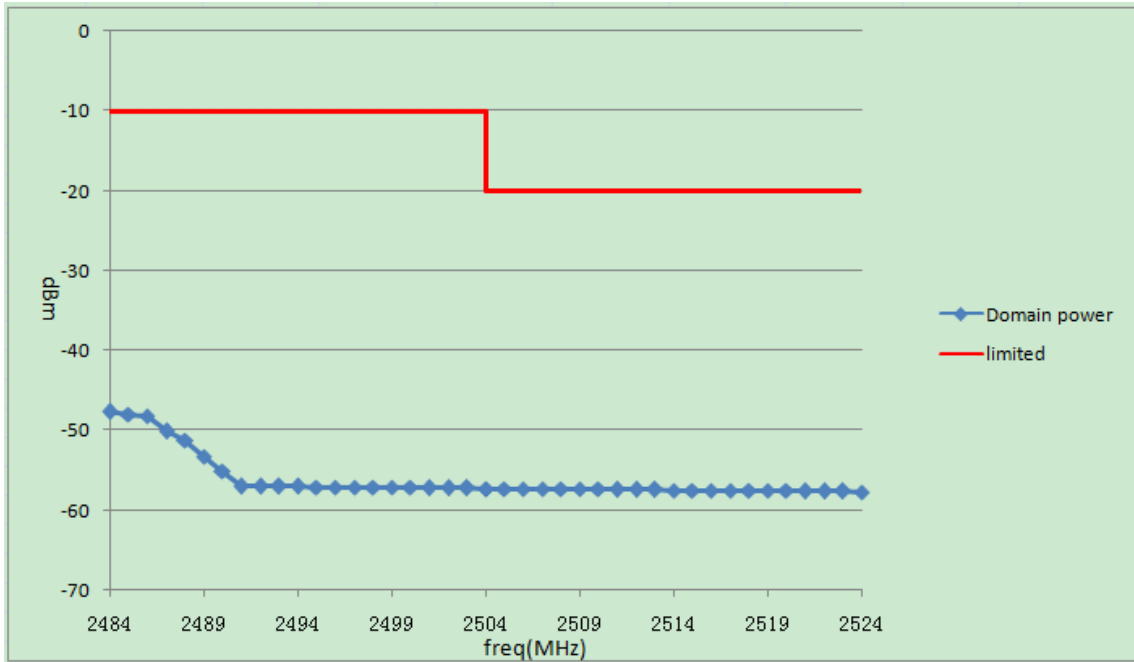
802.11g- Right Side



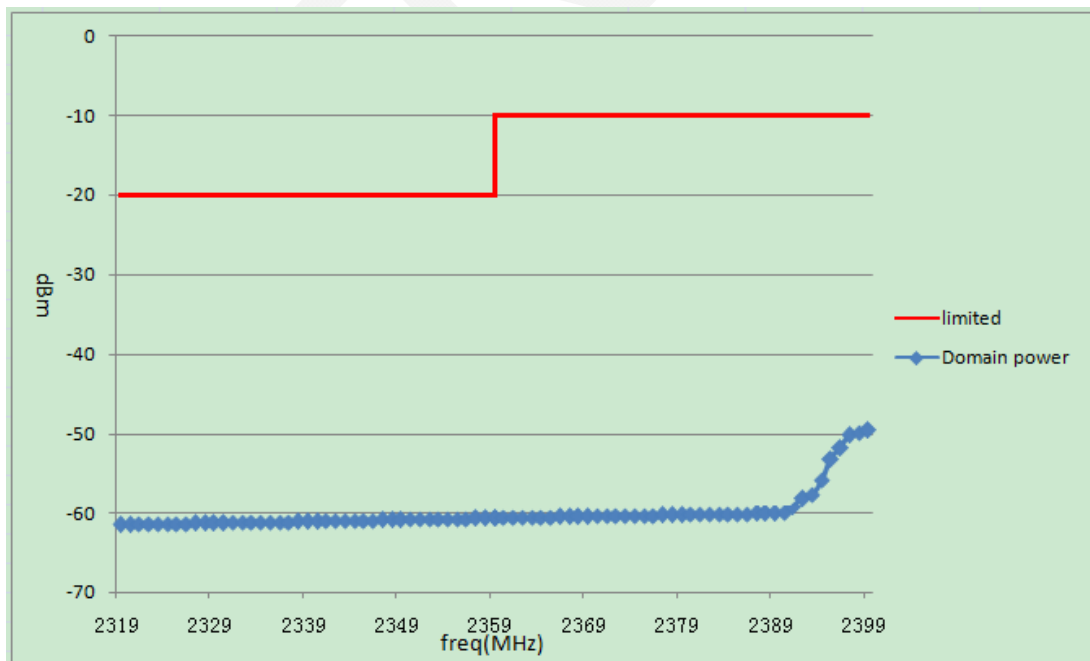
802.11n20- Left Side



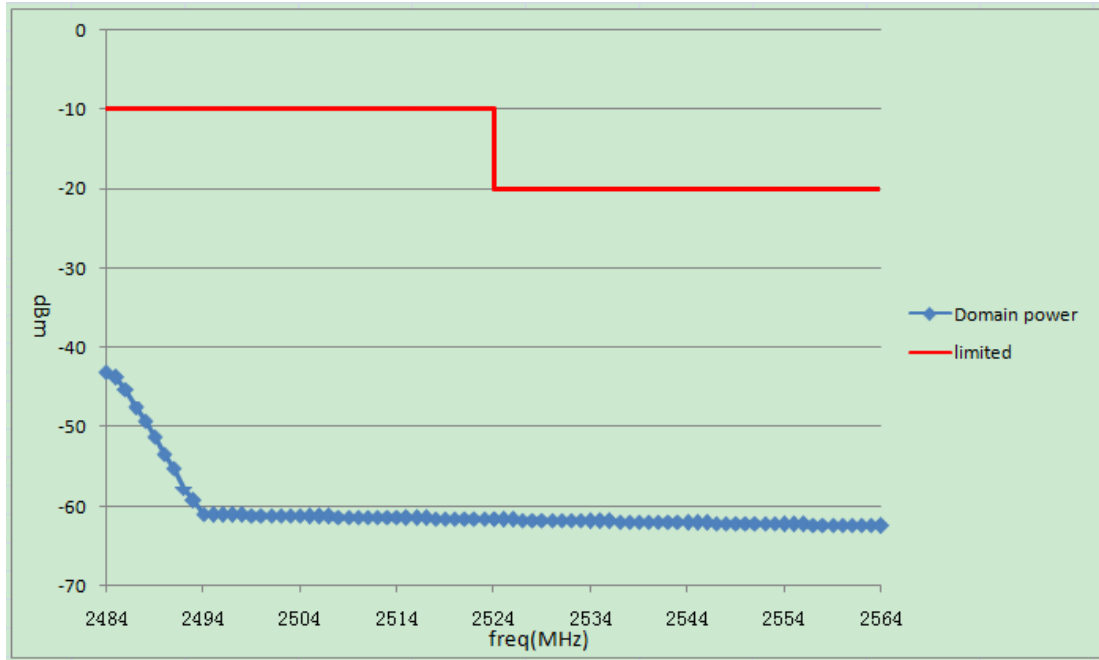
802.11n20- Right Side



802.11n40- Left Side



802.11n40- Right Side



ETSI EN 300 328 V1.9.1 (2015-02) §4.3.2.9 – TRANSMITTER UNWANTED EMISSION IN THE SPURIOUS DOMAIN

Applicable Standard

Transmitter unwanted emissions in the spurious domain are emissions outside the allocated band and outside the Out-of-band Domain as indicated in figure 3 when the equipment is in Transmit mode.

The transmitter unwanted emissions in the spurious domain shall not exceed the values given in the following table.

Transmitter limits for spurious emissions

Frequency Range	Maximum power e.r.p (≤ 1 GHz) e.i.r.p (> 1 GHz)	Bandwidth
30 MHz to 47 MHz	-36 dBm	100 kHz
47 MHz to 74 MHz	-54 dBm	100 kHz
74 MHz to 87,5 MHz	-36 dBm	100 kHz
87,5 MHz to 118 MHz	-54 dBm	100 kHz
118 MHz to 174 MHz	-36 dBm	100 kHz
174 MHz to 230 MHz	-54 dBm	100 kHz
230 MHz to 470 MHz	-36 dBm	100 kHz
470 MHz to 862 MHz	-54 dBm	100 kHz
862 MHz to 1 GHz	-36 dBm	100 kHz
1 GHz to 12,75 GHz	-30 dBm	1 MHz

NOTE: In case of equipment with antenna connectors, these limits apply to emissions at the antenna port (conducted) and to the emissions radiated by the cabinet. In case of integral antenna equipment (without temporary antenna connectors), these limits apply to emissions radiated by the equipment.

Measurement Uncertainty

All measurements involve certain levels of uncertainties, especially in field of EMC. The factors contributing to uncertainties are spectrum analyzer, cable loss, antenna factor calibration, antenna directivity, antenna factor variation with height, antenna phase center variation, antenna factor frequency interpolation, measurement distance variation, site imperfections, mismatch (average), and system repeatability.

Based on CISPR 16-4-2:2011, the expanded combined standard uncertainty of radiation emissions at Bay Area Compliance Laboratories Corp. (Shenzhen) is 5.91 dB for 30MHz-1GHz and 4.92 dB for above 1GHz, and it will not be taken into consideration for the test data recorded in the report.

Test Procedure

According to ETSI EN 300 328 V1.9.1 (2015-02) §5.3.10.2

Test Equipment List and Details

Manufacturer	Description	Model	Serial Number	Calibration Date	Calibration Due Date
Sunol Sciences	Horn Antenna	DRH-118	A052304	2014-12-29	2017-12-28
Sunol Sciences	Bi-log Antenna	JB1	A040904-2	2014-12-07	2017-12-06
Rohde & Schwarz	Signal Analyzer	FSIQ26	8386001028	2015-12-11	2016-12-11
Mini	Pre-amplifier	ZVA-183-S+	5969001149	2015-04-23	2016-04-23
HP	Signal Generator	8657A	3217A04699	2015-12-19	2016-12-18
HP	Amplifier	HP8447E	1937A01046	2015-05-06	2016-05-06
Rohde & Schwarz	EMI Test Receiver	ESCI	101120	2015-11-03	2016-11-03
HP	Signal Generator	HP 8341B	2624A00116	2015-07-02	2016-07-01
COM POWER	Dipole Antenna	AD-100	041000	2015-08-18	2016-08-18
A.H. System	Horn Antenna	SAS-200/571	135	2015-08-18	2018-08-17

* **Statement of Traceability:** Bay Area Compliance Laboratories Corp. (Shenzhen) attests that all calibrations have been performed in accordance to requirements, traceable to National Primary Standards and International System of Units (SI).

Test Data**Environmental Conditions**

Temperature:	23 °C
Relative Humidity:	50 %
ATM Pressure:	101.0 kPa

The testing was performed by Haiguo Li on 2015-12-28.

Test Mode: Transmitting (worst case at 802.11b mode)

30 MHz ~ 12.75 GHz:

Frequency (MHz)	Receiver Reading (dBµV)	Turntable Angle Degree	Rx Antenna		Substituted			Absolute Level (dBm)	EN 300 328	
			Height (m)	Polar (H/V)	SG Level (dBm)	Cable Loss (dB)	Antenna Gain (dB)		Limit (dBm)	Margin (dB)
802.11b Low Channel										
305.03	36.59	30	1.1	H	-60.4	0.36	0	-60.76	-36	24.76
305.03	35.87	196	1.4	V	-61.1	0.36	0	-61.46	-36	25.46
4824.00	46.03	88	1.7	H	-53.4	2.10	9.90	-45.60	-30	15.60
4824.00	43.91	39	1.0	V	-55.3	2.10	9.90	-47.50	-30	17.50
802.11b High Channel										
305.03	36.43	108	1.5	H	-60.6	0.36	0	-60.96	-36	24.96
305.03	35.56	330	2.1	V	-61.4	0.36	0	-61.76	-36	25.76
4944.00	46.66	82	2.2	H	-52.7	1.70	10.00	-44.40	-30	14.40
4944.00	45.55	141	1.6	V	-53.3	1.70	10.00	-45.00	-30	15.00

Note:

Absolute Level = SG Level - Cable loss + Antenna Gain

Margin = Limit- Absolute Level

ETSI EN 300 328 V1.9.1 (2015-02) §4.3.2.10 – RECEIVER SPURIOUS EMISSIONS

Applicable Standard

According to ETSI EN 300 328 V1.9.1 (2015-02) §4.3.2.10, the receiver spurious emissions are emissions at any frequency when the equipment is in receive mode.

The spurious emissions of the receiver shall not exceed the values given in the following table

Frequency range	Maximum power, e.r.p.	Measurement bandwidth
30 MHz to 1 GHz	-57 dBm	100 kHz
1 GHz to 12,75 GHz	-47 dBm	1 MHz

NOTE: In case of equipment with antenna connectors, these limits apply to emissions at the antenna port (conducted) and to the emissions radiated by the cabinet. In case of integral antenna equipment (without temporary antenna connectors), these limits apply to emissions radiated by the equipment.

Measurement Uncertainty

All measurements involve certain levels of uncertainties, especially in field of EMC. The factors contributing to uncertainties are spectrum analyzer, cable loss, antenna factor calibration, antenna directivity, antenna factor variation with height, antenna phase center variation, antenna factor frequency interpolation, measurement distance variation, site imperfections, mismatch (average), and system repeatability.

Based on CISPR 16-4-2:2011, the expanded combined standard uncertainty of radiation emissions at Bay Area Compliance Laboratories Corp. (Shenzhen) is 5.91 dB for 30MHz-1GHz and 4.92 dB for above 1GHz, and it will not be taken into consideration for the test data recorded in the report.

Test Procedure

According to ETSI EN 300 328 V1.9.1 (2015-02) §5.3.11.2

Test Equipment List and Details

Manufacturer	Description	Model	Serial Number	Calibration Date	Calibration Due Date
Sunol Sciences	Horn Antenna	DRH-118	A052304	2014-12-29	2017-12-28
Sunol Sciences	Bi-log Antenna	JB1	A040904-2	2014-12-07	2017-12-06
Rohde & Schwarz	Signal Analyzer	FSIQ26	8386001028	2015-12-11	2016-12-11
Mini	Pre-amplifier	ZVA-183-S+	5969001149	2015-04-23	2016-04-23
HP	Signal Generator	8657A	3217A04699	2015-12-19	2016-12-18
HP	Amplifier	HP8447E	1937A01046	2015-05-06	2016-05-06
Rohde & Schwarz	EMI Test Receiver	ESCI	101120	2015-11-03	2016-11-03
HP	Signal Generator	HP 8341B	2624A00116	2015-07-02	2016-07-01
COM POWER	Dipole Antenna	AD-100	041000	2015-08-18	2016-08-18
A.H. System	Horn Antenna	SAS-200/571	135	2015-08-18	2018-08-17

* **Statement of Traceability:** Bay Area Compliance Laboratories Corp. (Shenzhen) attests that all calibrations have been performed in accordance to requirements, traceable to National Primary Standards and International System of Units (SI).

Test Data**Environmental Conditions**

Temperature:	23 °C
Relative Humidity:	50 %
ATM Pressure:	101.0 kPa

The testing was performed by Haiguo Li on 2015-12-28.

Test Mode: Receiving (worst case)

30 MHz ~ 12.75 GHz:

Frequency (MHz)	Receiver Reading (dBµV)	Turntable Angle Degree	Rx Antenna		Substituted			Absolute Level (dBm)	EN 300 328	
			Height (m)	Polar (H/V)	SG Level (dBm)	Cable Loss (dB)	Antenna Gain (dB)		Limit (dBm)	Margin (dB)
802.11n40 Low Channel										
168.25	31.67	104	2.2	H	-65.3	0.28	0	-65.58	-57	8.58
168.25	30.76	321	1.6	V	-66.2	0.28	0	-66.48	-57	9.48
1576.25	41.54	189	1.5	H	-67.3	1.30	6.70	-61.90	-47	14.90
1576.25	40.22	311	1.2	V	-68.1	1.30	6.70	-62.70	-47	15.70
802.11n40 High Channel										
168.25	30.46	204	2.1	H	-66.5	0.28	0	-66.78	-57	9.78
168.25	31.42	118	1.4	V	-65.6	0.28	0	-65.88	-57	8.88
1576.25	41.73	250	1.8	H	-67.1	1.30	6.70	-61.70	-47	14.70
1576.25	40.26	315	2.0	V	-68.0	1.30	6.70	-62.60	-47	15.60

Note:

Absolute Level = SG Level - Cable loss + Antenna Gain
 Margin = Limit- Absolute Level

EXHIBIT A - E.1 INFORMATION AS REQUIRED BY EN 300 328 V1.9.1, CLAUSE 5.3.1

In accordance with EN 300 328, clause 5.3.1, the following information is provided by the supplier.

a) The type of modulation used by the equipment:

- FHSS
 other forms of modulation

b) In case of FHSS modulation:

In case of non-Adaptive Frequency Hopping equipment:

The number of Hopping Frequencies: _____.

In case of Adaptive Frequency Hopping Equipment:

The maximum number of Hopping Frequencies: _____;

The minimum number of Hopping Frequencies: _____;

The Dwell Time: _____;

The Minimum Channel Occupation Time:

c) Adaptive / non-adaptive equipment:

- non-adaptive Equipment
 adaptive Equipment without the possibility to switch to a non-adaptive mode
 adaptive Equipment which can also operate in a non-adaptive mode

d) In case of adaptive equipment:

The Channel Occupancy Time implemented by the equipment: _____ms

- The equipment has implemented an LBT based DAA mechanism

In case of equipment using modulation different from FHSS:

- The equipment is Frame Based equipment
 The equipment is Load Based equipment
 The equipment can switch dynamically between Frame Based and Load Based equipment

The CCA time implemented by the equipment: _____ μ s

The value q is _____.

- The equipment has implemented an non-LBT based DAA mechanism
 The equipment can operate in more than one adaptive mode

e) In case of non-adaptive Equipment:

The maximum RF Output Power (e.i.r.p.): _____dBm

The maximum (corresponding) Duty Cycle: _____ %

Equipment with dynamic behaviour, that behaviour is described here. (e.g. the different combinations of duty cycle and corresponding power levels to be declared):

_____.

f) The worst case operational mode for each of the following tests:

RF Output Power: 8.63dBm;
 Power Spectral Density 0.02dBm/MHz;
 Duty cycle, Tx-Sequence, Tx-gap N/A;
 Dwell time, Minimum Frequency Occupation & Hopping Sequence (only for FHSS equipment) N/A;
 Hopping Frequency Separation (only for FHSS equipment) N/A;
 Medium Utilisation N/A;
 Adaptivity & Receiver Blocking N/A;
 Occupied Channel Bandwidth 36.93MHz;
 Transmitter unwanted emissions in the OOB domain -43.13dBm/MHz;
 Transmitter unwanted emissions in the spurious domain -44.40dBm;
 Receiver spurious emissions -65.58dBm;

g) The different transmit operating modes (tick all that apply):

- Operating mode 1: Single Antenna Equipment
- Equipment with only 1 antenna
- Equipment with 2 diversity antennas but only 1 antenna active at any moment in time
- Smart Antenna Systems with 2 or more antennas, but operating in a (legacy) mode where only 1 antenna is used.
(e.g. IEEE 802.11™ [i.3] legacy mode in smart antenna systems)
- Operating mode 2: Smart Antenna Systems - Multiple Antennas without beam forming
- Single spatial stream / Standard throughput / (e.g. IEEE 802.11™ [i.3] legacy mode)
- High Throughput (> 1 spatial stream) using Occupied Channel Bandwidth 1
- High Throughput (> 1 spatial stream) using Occupied Channel Bandwidth 2
Note: Add more lines if more channel bandwidths are supported.
- Operating mode 3: Smart Antenna Systems - Multiple Antennas with beam forming
- Single spatial stream / Standard throughput (e.g. IEEE 802.11™ [i.3] legacy mode)
- High Throughput (> 1 spatial stream) using Occupied Channel Bandwidth 1
- High Throughput (> 1 spatial stream) using Occupied Channel Bandwidth 2
Note: Add more lines if more channel bandwidths are supported.

h) In case of Smart Antenna Systems:

The number of Receive chains: _____;
 The number of Transmit chains: _____;

- symmetrical power distribution
- asymmetrical power distribution

In case of beam forming, the maximum beam forming gain: _____;

Note: Beam forming gain does not include the basic gain of a single antenna.

i) Operating Frequency Range(s) of the equipment:

Operating Frequency Range 1: 2412 MHz to 2472 MHz

Operating Frequency Range 1: 2422 MHz 2462 MHz

Note: Add more lines if more Frequency Ranges are supported.

j) Occupied Channel Bandwidth(s):

Occupied Channel Bandwidth 1: 802.11 B Mode 14.41 MHz
Occupied Channel Bandwidth 2: 802.11 G Mode 16.79 MHz
Occupied Channel Bandwidth 3: 802.11 N20 Mode 17.95 MHz
Occupied Channel Bandwidth 4: 802.11 N40 Mode 36.93 MHz

Note: Add more lines if more channel bandwidths are supported.

k) Type of Equipment (stand-alone, combined, plug-in radio device, etc.):

- Stand-alone
 Combined Equipment (Equipment where the radio part is fully integrated within another type of equipment)
 Plug-in radio device (Equipment intended for a variety of host systems)
 Other _____;

l) The extreme operating conditions that apply to the equipment:

Operating temperature range: -20 ° C to +55 ° C

Operating voltage range: _____ V to _____ V DC

Details provided are for the: stand-alone equipment
 combined (or host) equipment
 test jig

m) The intended combination(s) of the radio equipment power settings and one or more antenna assemblies and their corresponding e.i.r.p levels:

Antenna Type:

- Integral Antenna

Antenna Gain: 1.00 dBi

If applicable, additional beamforming gain (excluding basic antenna gain): _____ dB

- Temporary RF connector provided
 No temporary RF connector provided
 Dedicated Antennas (equipment with antenna connector)
 Single power level with corresponding antenna(s)
 Multiple power settings and corresponding antenna(s)

Number of different Power Levels: _____;

Power Level 1: _____ dBm

Note 1: Add more lines in case the equipment has more power levels.

Note 2: These power levels are conducted power levels (at antenna connector).

For each of the Power Levels, provide the intended antenna assemblies, their corresponding gains (G) and the resulting e.i.r.p. levels also taking into account the beamforming gain (Y) if applicable

n) The nominal voltages of the stand-alone radio equipment or the nominal voltages of the combined (host) equipment or test jig in case of plug-in devices:

Details provided are for the: stand-alone equipment
 combined (or host) equipment
 test jig

Supply Voltage AC mains State AC voltage 100-240 V
 DC State DC voltage 3.8 V

In case of DC, indicate the type of power source

- Internal Power Supply
 External Power Supply or AC/DC adapter
 Battery
 Other: _____

o) Describe the test modes available which can facilitate testing:

Continuous transmitting and normal operation .

p) The equipment type (e.g. Bluetooth®, IEEE 802.11™ [i.3], proprietary, etc.):

IEEE 802.11™ [i.3]

q) If applicable, the statistical analysis referred to in clause 5.3.1 q)

(to be provided as separate attachment)

r) If applicable, the statistical analysis referred to in clause 5.3.1 r)

(to be provided as separate attachment)

s) Geo-location capability supported by the equipment:

- Yes
 The geographical location determined by the equipment as defined in clause 4.3.1.13.2 or clause 4.3.2.12.2 is not accessible to the user.
 No

EXHIBIT B - CE PRODUCT LABELING

CE Label Format

CE 1313

Specifications: The marking set out above must be affixed to the apparatus or to its data plate and have a minimum height of 5 mm. The elements should be easily readable and indelible. They may be placed anywhere on the apparatus case or in its battery compartment. No tool should be needed to view the marking.
1313: 4 digit notified body number

Note: The label should contain the below content

- ① The name of the manufacturer or the person responsible for placing the apparatus on the market
- ② Type
- ③ Batch and/or serial numbers

Proposed Label Location on EUT



EXHIBIT C - EUT PHOTOGRAPHS

EUT – All View



EUT – Front View



EUT – Rear View



EUT – Top View



EUT – Bottom View



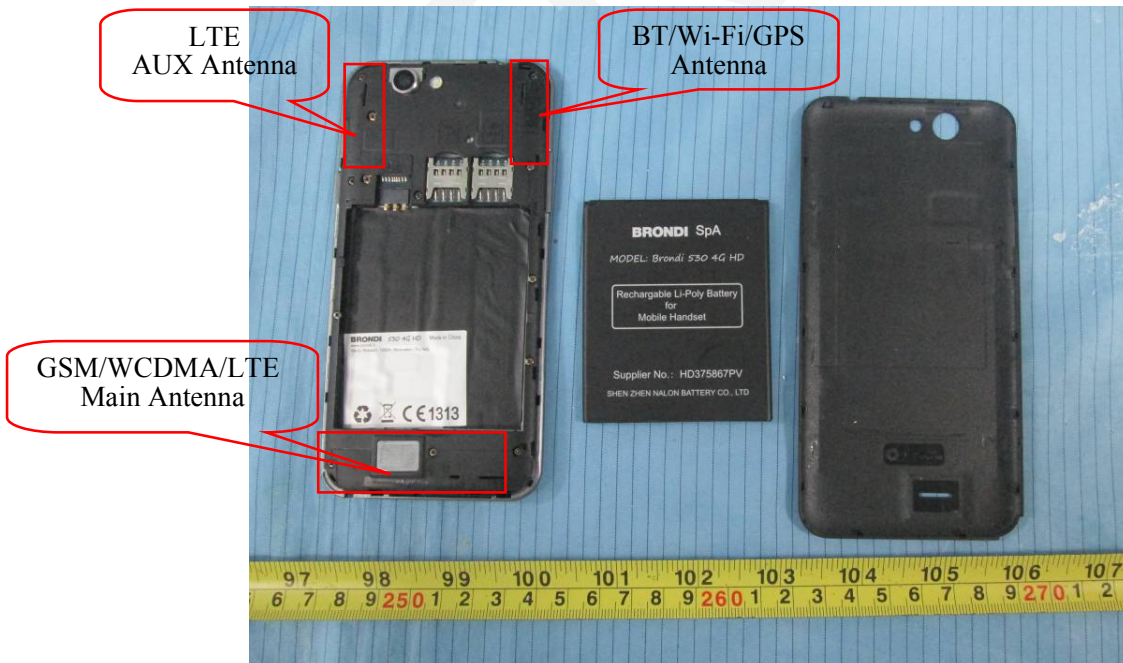
EUT –Left Side View



EUT – Right Side View



EUT –Cover off View 1



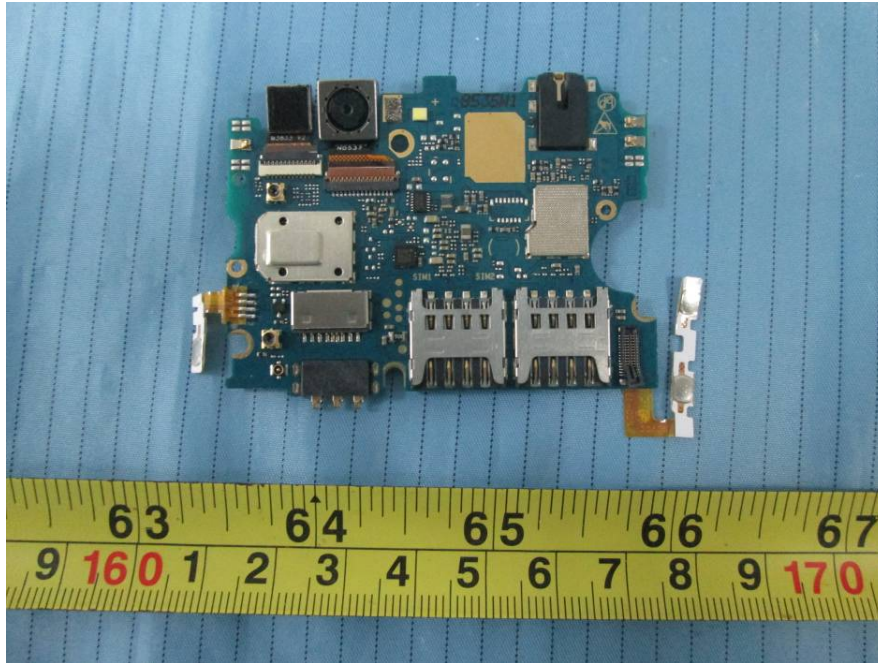
EUT –Cover off View 2



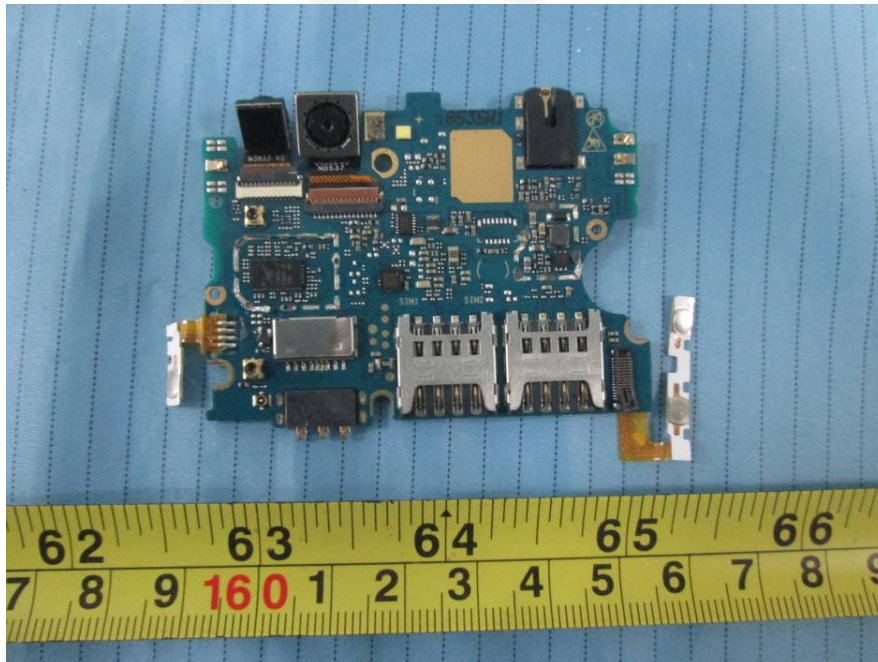
EUT –Cover off View 3



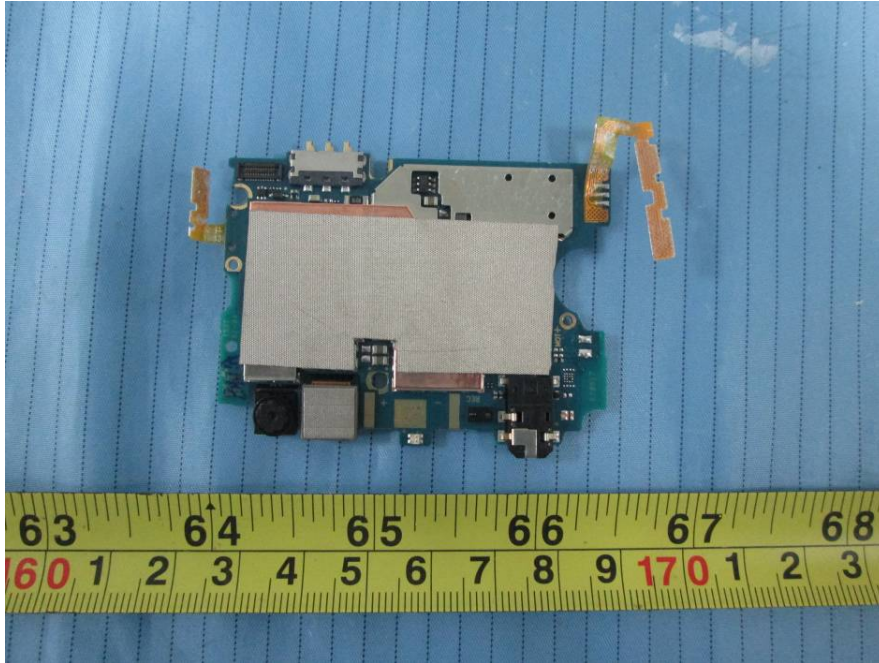
EUT – Main Board Top View



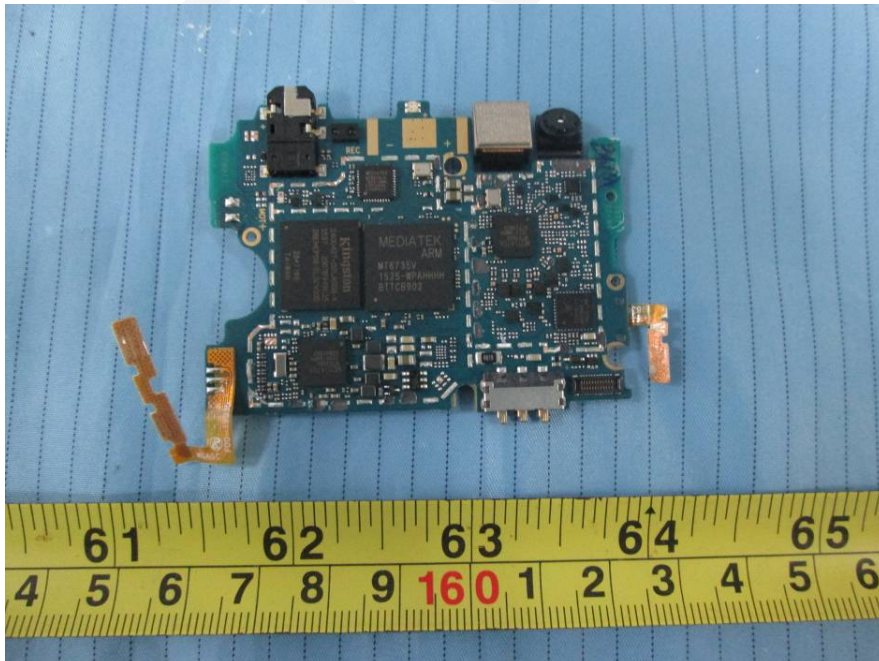
EUT – Main Board Top Shielding off View



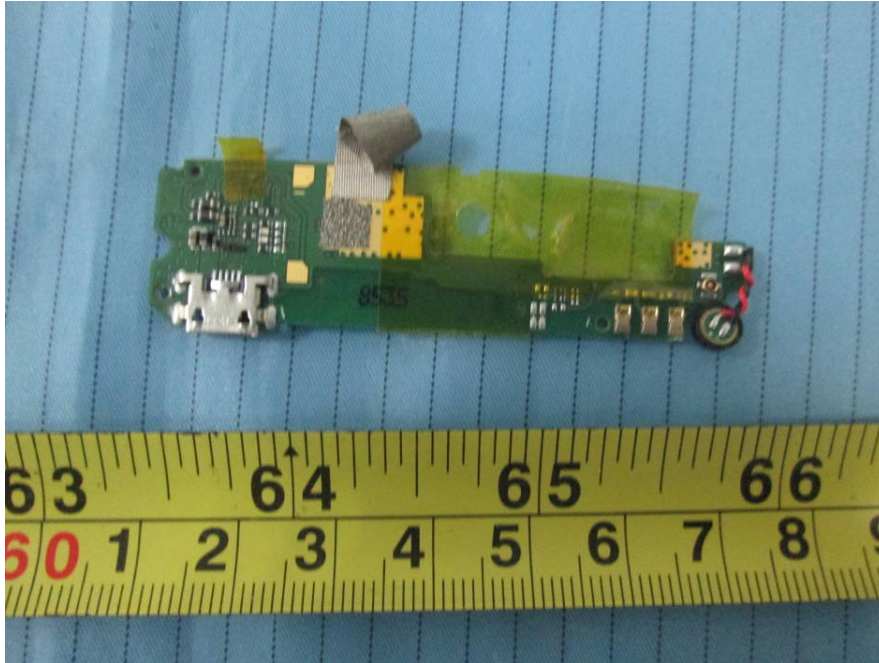
EUT – Main Board Bottom View



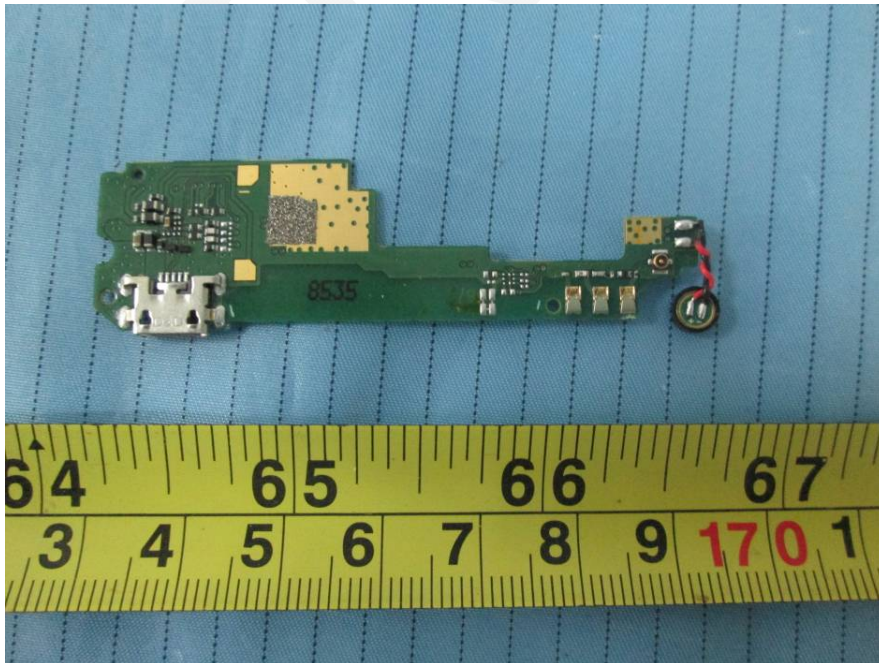
EUT – Main Board Bottom Shielding off View



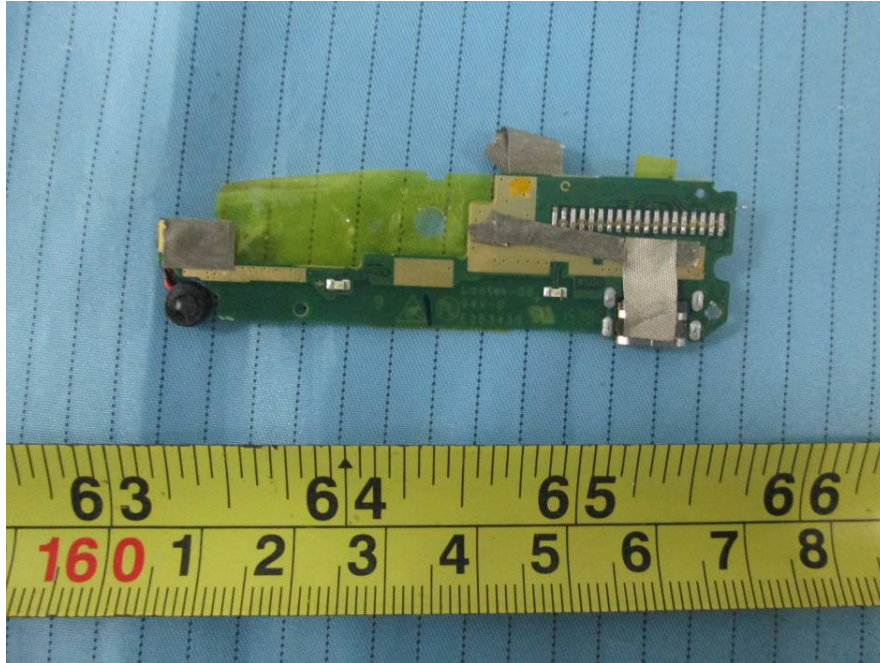
EUT – Sub Board Top View



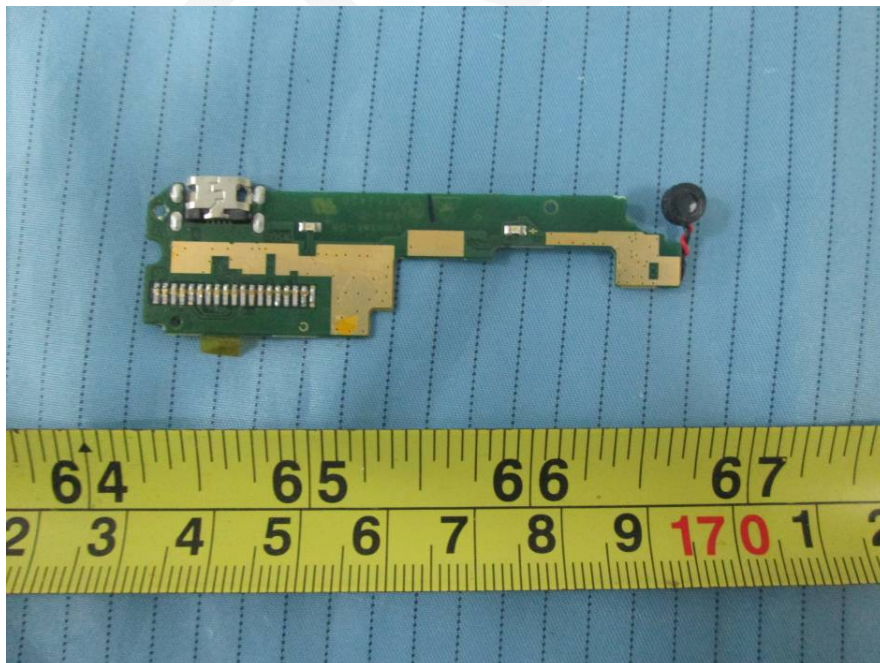
EUT – Sub Board Top Shielding off View



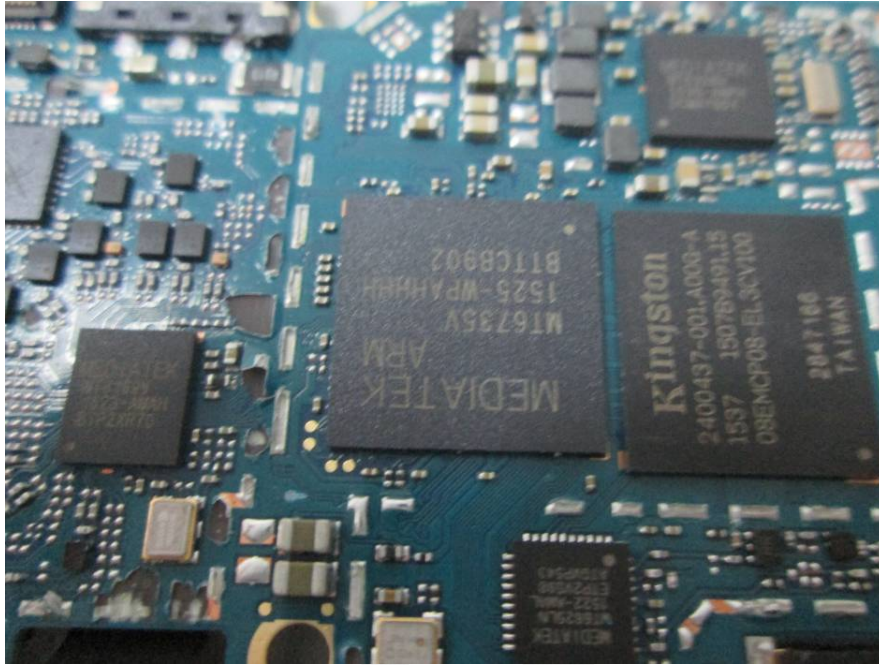
EUT – Sub Board Bottom View



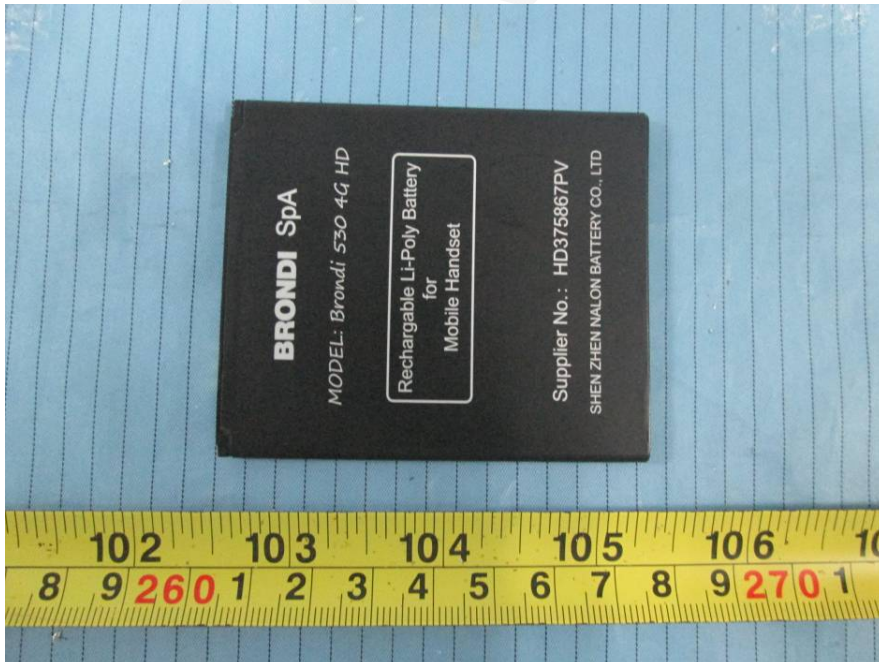
EUT – Main Board Bottom Shielding off View



EUT – IC Chip View



EUT – Battery Top View



EUT – Battery Bottom View



EUT – USB Cable & Adapter View



EUT – USB Cable View



EUT – Adapter Label View



Model:KS15002R

Input:100-240V~ 50/60Hz 0.2A

Output: 5.0V --- 1000mA

Shenzhen Kosun Industrial Co., Ltd

BRONDI SpA Made in China

EXHIBIT D - TEST SETUP PHOTOGRAPHS

Radiated Spurious Emissions View (Below 1 GHz)



Radiated Spurious Emissions View (Above 1 GHz)



PRODUCT SIMILARITY DECLARATION LETTER

Shenzhen East Xinyi Electronic Technology Co., Ltd.
Room 20A, TAIBANG Technology bldg, High-Tech Park, Nanshan District, Shenzhen, China
Tel: +86 13534231610 Fax: +86 755 2533 3622

12/30/2015

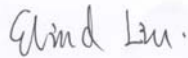
Product Similarity Declaration

To Whom It May Concern,

We, Shenzhen East Xinyi Electronic Technology Co., Ltd. ,hereby declare that we have a product named as Brondi 530 4G HD (Model number: EX8535) was tested by BACL, meanwhile, for our marketing purpose, we would like to list a series models (EX8537) on reports and certificate, only model number different and the rear cover process different, don't affect the electromagnetic compatibility. No other changes are made to them.

We confirm that all information above is true, and we'll be responsible for all the consequences. Please contact me if you have any question.

Signature:



Elind Liu
Sales Manager

*******END OF REPORT*******