

EN 55022:2010/AC:2011
EN 55024:2010
EN 61000-3-2:2006 + A1:2009 + A2:2009
EN 61000-3-3:2013

TEST REPORT

For

Advanced Technologies SRL

Ion Heliade Radulescu nr 26, Bucharest 021255, ROMANIA

Tested Model: Xylo Q
Multiple Model: Xylo X

Report Type: Original Report	Product Type: Smartphone Xylo
Test Engineer: Joson Xiao	<i>Joson Xiao</i>
Report Number: RSZ160309003-01A	
Report Date: 2016-03-31	
Reviewed By: Suny Sun EMC Manager	<i>Suny Sun</i>
Prepared By: Bay Area Compliance Laboratories Corp. (Shenzhen) 6/F, the 3rd Phase of WanLi Industrial Building ShiHua Road, FuTian Free Trade Zone Shenzhen, Guangdong, China Tel: +86-755-33320018 Fax: +86-755-33320008 www.baclcorp.com.cn	

Note: This test report is prepared for the customer shown above and for the equipment described herein. It may not be duplicated or used in part without prior written consent from Bay Area Compliance Laboratories Corp. This report is valid only with a valid digital signature. The digital signature may be available only under the Adobe software above version 7.0.

TABLE OF CONTENTS

GENERAL INFORMATION.....	5
PRODUCT DESCRIPTION FOR EQUIPMENT UNDER TEST (EUT).....	5
OBJECTIVE.....	5
RELATED SUBMITTAL(S)/GRANT(S).....	5
TEST METHODOLOGY.....	5
TEST FACILITY.....	6
SYSTEM TEST CONFIGURATION.....	7
JUSTIFICATION.....	7
EUT EXERCISE SOFTWARE.....	7
EQUIPMENT MODIFICATIONS.....	7
SUPPORT EQUIPMENT LIST AND DETAILS.....	7
EXTERNAL I/O CABLE.....	8
BLOCK DIAGRAM OF TEST SETUP.....	8
SUMMARY OF TEST REPORT.....	10
EN 55022 §5.1 - CONDUCTED DISTURBANCE AT MAINS TERMINALS.....	11
MEASUREMENT UNCERTAINTY.....	11
TEST SYSTEM SETUP.....	11
EMI TEST RECEIVER SETUP.....	12
TEST EQUIPMENT LIST AND DETAILS.....	12
TEST PROCEDURE.....	12
CORRECTED FACTOR & MARGIN CALCULATION.....	12
TEST RESULTS SUMMARY.....	13
TEST DATA.....	13
EN 55022 §6-RADIATED DISTURBANCE.....	16
MEASUREMENT UNCERTAINTY.....	16
TEST SYSTEM SETUP.....	16
EMI TEST RECEIVER SETUP.....	17
TEST PROCEDURE.....	17
TEST EQUIPMENT LIST AND DETAILS.....	17
CORRECTED AMPLITUDE & MARGIN CALCULATION.....	18
TEST RESULTS SUMMARY.....	18
TEST DATA.....	18
EN 55024 §4.2.1-ELECTROSTATIC DISCHARGES (IEC 61000-4-2).....	22
TEST EQUIPMENT.....	22
TEST SYSTEM SETUP.....	22
TEST STANDARD.....	22
TEST PROCEDURE.....	23
TEST DATA AND SETUP PHOTO.....	23
EN 55024 §4.2.2-ELECTRICAL FAST TRANSIENTS (IEC 61000-4-4).....	27
TEST EQUIPMENT.....	27
TEST SYSTEM SETUP.....	27
TEST STANDARD.....	27
TEST PROCEDURE.....	28
TEST DATA AND SETUP PHOTO.....	28

EN 55024 §4.2.3.1-CONTINUOUS RADIATED IMMUNITY (IEC 61000-4-3)30
 TEST EQUIPMENT30
 TEST SYSTEM SETUP30
 TEST STANDARD31
 TEST PROCEDURE31
 TEST DATA AND SETUP PHOTO31

EN 55024 §4.2.3.2-CONTINUOUS CONDUCTED IMMUNITY (IEC 61000-4-6).....34
 TEST EQUIPMENT34
 TEST SETUP34
 TEST STANDARD34
 TEST PROCEDURE35
 TEST DATA AND SETUP PHOTO35

EN 55024 §4.2.4-POWER FREQUENCY MAGNETIC FIELDS (IEC 61000-4-8).....37
 TEST EQUIPMENT37
 TEST SETUP37
 TEST STANDARD37
 TEST PROCEDURE38
 TEST DATA AND SETUP PHOTO38

EN 55024 §4.2.5-SURGES (IEC 61000-4-5)40
 TEST EQUIPMENT40
 TEST SYSTEM SETUP40
 TEST STANDARD40
 TEST PROCEDURE41
 TEST DATA AND SETUP PHOTO41

EN 55024 §4.2.6-VOLTAGE DIPS AND INTERRUPTIONS (IEC 61000-4-11).....43
 TEST EQUIPMENT43
 TEST SETUP43
 TEST STANDARD43
 TEST PROCEDURE43
 TEST DATA AND SETUP PHOTO44

EN 61000-3-2 – HARMONIC CURRENT EMISSIONS.....45

EN 61000-3-3 – VOLTAGE FLUCTUATION AND FLICKER.....46
 TEST EQUIPMENT46
 TEST SYSTEM SETUP46
 TEST STANDARD46
 TEST DATA AND SETUP PHOTO47

EXHIBIT A - PRODUCT CE LABELING.....49
 PROPOSED CE LABEL FORMAT49
 PROPOSED LABEL LOCATION ON EUT49

EXHIBIT B - EUT PHOTOGRAPHS50
 EUT – FRONT VIEW50
 EUT – REAR VIEW50
 EUT – TOP VIEW51
 EUT – BOTTOM VIEW51
 EUT –LEFT SIDE VIEW52
 EUT – RIGHT SIDE VIEW52
 EUT –COVER OFF VIEW 153
 EUT –COVER OFF VIEW 253
 EUT –COVER OFF VIEW 354
 EUT –COVER OFF VIEW 454

EUT – MAIN BOARD TOP VIEW55

EUT – MAIN BOARD TOP SHIELDING OFF VIEW55

EUT – MAIN BOARD BOTTOM VIEW56

EUT – IC CHIP VIEW56

EUT – BATTERY TOP VIEW57

EUT – BATTERY BOTTOM VIEW57

EUT – FRONT VIEW58

EUT – REAR VIEW58

EUT – TOP VIEW59

EUT – BOTTOM VIEW59

EUT –LEFT SIDE VIEW60

EUT – RIGHT SIDE VIEW60

EUT –COVER OFF VIEW 161

EUT –COVER OFF VIEW 261

EUT –COVER OFF VIEW 362

EUT –COVER OFF VIEW 462

EUT – MAIN BOARD TOP VIEW63

EUT – MAIN BOARD TOP SHIELDING OFF VIEW63

EUT – MAIN BOARD BOTTOM VIEW64

EUT – IC CHIP VIEW64

EUT – ANTENNA VIEW65

EUT – BATTERY TOP VIEW65

EUT – BATTERY BOTTOM VIEW66

EXHIBIT C - TEST SETUP PHOTOGRAPHS67

CONDUCTED DISTURBANCE - FRONT VIEW67

CONDUCTED DISTURBANCE - SIDE VIEW67

RADIATED DISTURBANCE - FRONT VIEW (BELOW 1G, CHARGING & PLAYING)68

RADIATED DISTURBANCE - REAR VIEW (BELOW 1G, CHARGING & PLAYING)68

RADIATED DISTURBANCE - FRONT VIEW (ABOVE 1G, CHARGING & PLAYING)69

RADIATED DISTURBANCE - REAR VIEW (ABOVE 1G, CHARGING & PLAYING)69

RADIATED DISTURBANCE - FRONT VIEW (BELOW 1G, DOWNLOADING)70

RADIATED DISTURBANCE - REAR VIEW (BELOW 1G, DOWNLOADING)70

RADIATED DISTURBANCE - FRONT VIEW (ABOVE 1G, DOWNLOADING)71

RADIATED DISTURBANCE - REAR VIEW (ABOVE 1G, DOWNLOADING)71

PRODUCT SIMILARITY DECLARATION LETTER72

GENERAL INFORMATION

Product Description for Equipment under Test (EUT)

Advanced Technologies SRL's product, model number: *Xylo Q* (or the "EUT") in this report is a Smartphone *Xylo*, which was measured approximately: 126.9mm (L) x 64.1mm (W) x 10.35mm (H). , the input power is DC3.7 V by battery or DC 5.0 V from adapter. The highest operating frequency is 1.3GHz.

Adapter Information:

Model: JT108-0501000

Part number: VNA-V50XO

Input: AC 100V-240V, 50/60 Hz, 0.2A

Output: DC 5.0V, 1.0A.

S/N: VAV5X 110252

Note: The series product, model Xylo X and Xylo Q, they are identical. Model Xylo Q was selected for fully testing, which was explained detailedly in the attached product similarity declaration letter.

** All measurement and test data in this report was gathered from production sample serial number: 1601570. (Assigned by applicant).The EUT supplied by the applicant was received on 2016-03-09.*

Objective

This test report is prepared on behalf of *Advanced Technologies SRL* in accordance with EN 55022: Information technology equipment-Radio disturbance characteristics-Limits and methods of measurement. EN 55024: Information technology equipment- Immunity characteristics – Limits and methods of measurement.

EN 61000-3-2, Limits – Limits for harmonic current emissions (equipment input current up to and including 16 A per phase), and also in accordance with EN 61000-3-3, Limits Section 3; Limitation of voltage fluctuations and flicker in low-voltage supply systems for equipment with rated current<16A.

The objective is to determine the compliance of EUT with EN 55022, EN 55024, EN 61000-3-2 and EN 61000-3-3

Related Submittal(s)/Grant(s)

No related submittal(s).

Test Methodology

All measurements contained in this report were conducted with CISPR 16-1-1:2010, specification for radio disturbance and immunity measuring apparatus and methods P1-1: radio disturbance and immunity measuring apparatus measuring apparatus. CISPR 16-1-4:2012, Specification for radio disturbance and immunity measuring apparatus and methods-Part 1-4: Radio disturbance and immunity measuring apparatus -Ancillary equipment -Radiated disturbances. CISPR 16-2-1:2013, specification for radio disturbance and immunity measuring apparatus and methods P2-1: methods of measurement of disturbance and immunity conducted disturbance measurements. CISPR 16-2-3:2010, specification for radio disturbance and immunity measuring apparatus and methods P2-3 methods of measurement of disturbances and immunity radiated disturbance measurements. CISPR 16-4-2:2011, Specification for radio disturbance and immunity measuring apparatus and methods-Part 4-2: Uncertainties, statistics and limit modeling-Uncertainty in EMC measurements

All radiated and conducted emissions measurements were performed at Bay Area Compliance Laboratories Corp. (Shenzhen). The radiated testing was performed at an antenna-to-EUT distance of 3 Meters.

Test Facility

The Test site used by Bay Area Compliance Laboratories Corp. (Shenzhen) to collect test data is located on the 6/F, the 3rd Phase of WanLi Industrial Building, ShiHua Road, FuTian Free Trade Zone Shenzhen, Guangdong, China.

Test site at Bay Area Compliance Laboratories Corp. (Shenzhen) has been fully described in reports submitted to the Federal Communication Commission (FCC). The details of these reports have been found to be in compliance with the requirements of Section 2.948 of the FCC Rules on October 31, 2013. The facility also complies with the radiated and AC line conducted test site criteria set forth in ANSI C63.4-2014.

The Federal Communications Commission has the reports on file and is listed under FCC Registration No.: 382179. The test site has been approved by the FCC for public use and is listed in the FCC Public Access Link (PAL) database.

SYSTEM TEST CONFIGURATION

Justification

The system was configured for testing in a manufacturer testing fashion.

EUT Exercise Software

BurnIn V5.3

Equipment Modifications

No modification was made to the EUT.

Support Equipment List and Details

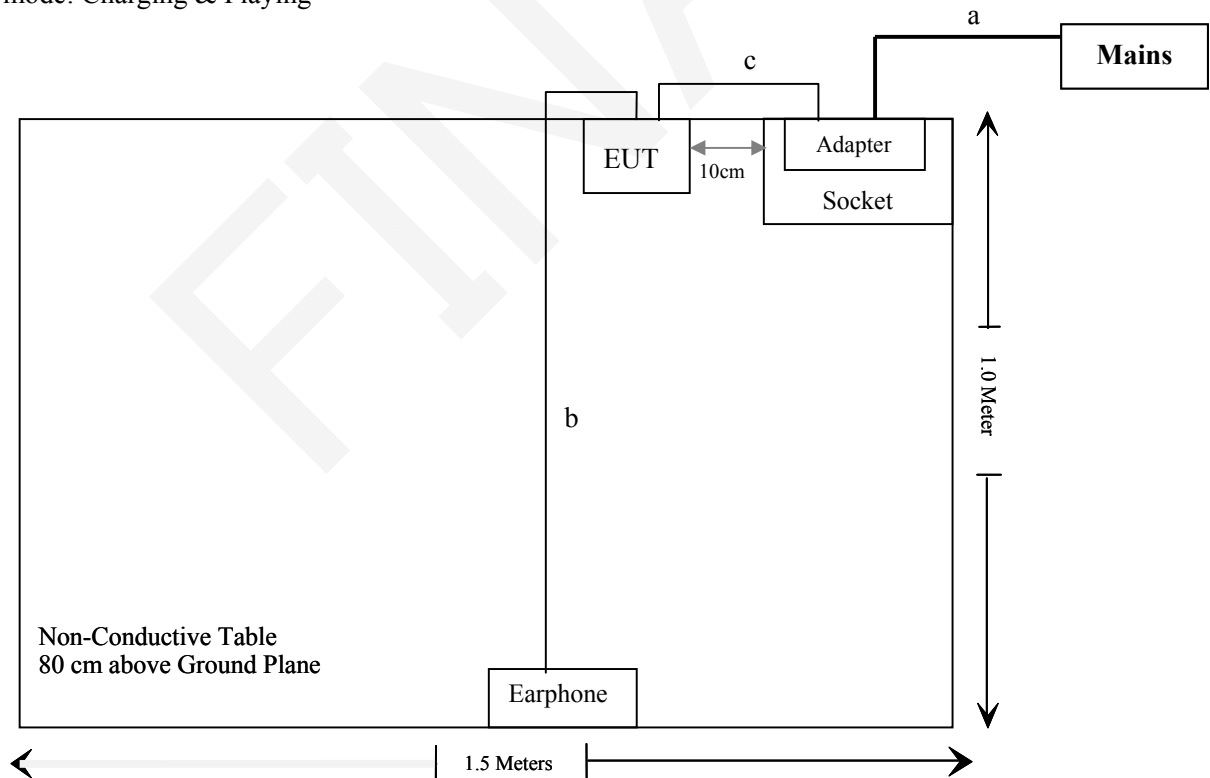
Manufacturer	Description	Model	Serial Number
N/A	earphone	N/A	2365284
Sandisk	T-F card	N/A	3491
BULL	Socket	GN-415K	5503290068073
TCL	Monitor	TFT1560PS	ALA560S05C180409
LENOVO	PC	ASJ	L3AC997
DELL	PC	DCSCSF	127BP2X
ECOM	Modem	56000bps	21654684
LISTED	Adapter1	TYP60-1207000Z	326703
Microsoft	Keyboard	1406	0200706128743
Microsoft	Mouse	1405	0204608630856

External I/O Cable

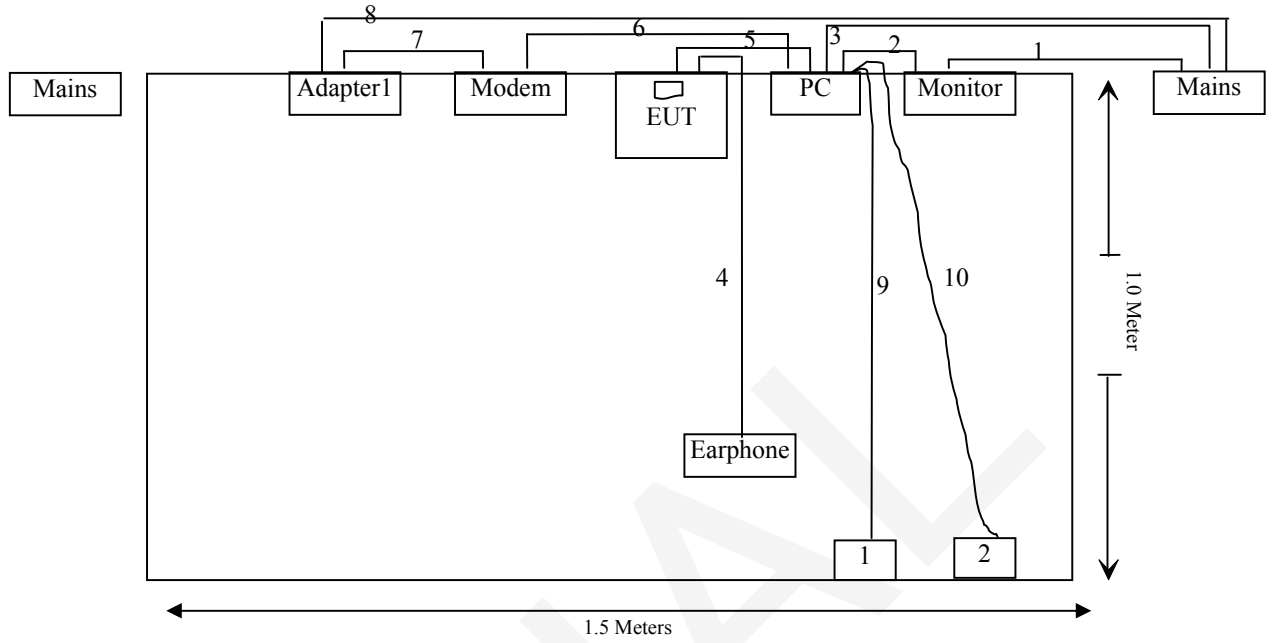
Cable Description	Length (m)	From / Port	To
Un-shielding Un-detachable AC cable	1.2	socket	Mains
Un-shielding Un-detachable earphone cable	1.5	earphone	EUT
Shielding Detachable USB cable	0.75	adapter	EUT
Un-shielding Detachable AC cable	1.2	monitor	Mains
Shielding Detachable VGA cable	1.4	monitor	PC
Un-shielding Detachable AC cable	1.5	PC	Mains
Un-shielding Un-detachable earphone cable	1.5	earphone	EUT
Shielding Detachable USB cable	0.75	adapter	EUT
Shielding Detachable RS232 cable	1.6	Modem	EUT
Un-shielding Un-detachable DC cable	1.4	Modem	adapter1
Un-shielding Detachable AC cable	1.6	Mains	adapter1
Shielding Un-detachable USB cable	1.6	Keyboard	PC
Shielding Un-detachable USB cable	1.6	Mouse	PC

Block Diagram of Test Setup

Test mode: Charging & Playing



Test mode: Downloading



Remark: T-F card 1 Keyboard 2 Mouse

SUMMARY OF TEST REPORT**EN 55022**

RULE	DESCRIPTION	RESULTS
§ 5.1	Conducted Disturbance at Mains Terminals	Compliance
§ 5.2	Conducted Disturbance at Telecommunication Port	Not Compliance
§ 6	Radiated Disturbance	Compliance

EN 55024

RULE	DESCRIPTION	RESULTS
§4.2.1	Electrostatic Discharge IEC 61000-4-2	Compliance
§4.2.2	Electrical Fast Transients IEC 61000-4-4	Compliance
§4.2.3.1	Continuous Radiated Immunity IEC 61000-4-3	Compliance
§4.2.3.2	Continuous Conducted Immunity IEC 61000-4-6	Compliance
§4.2.4	Power Frequency Magnetic Fields IEC 61000-4-8	Compliance
§4.2.5	Surges IEC 61000-4-5	Compliance
§4.2.6	Voltage Dips And Interruptions, IEC 61000-4-11	Compliance

EN 61000-3-2

Rule	Description	Results
§7	Harmonic Current Emissions	Compliance

EN 61000-3-3

Rule	Description	Results
§5	Flicker EN61000-3-3	Compliance

EN 55022 §5.1 - CONDUCTED DISTURBANCE AT MAINS TERMINALS

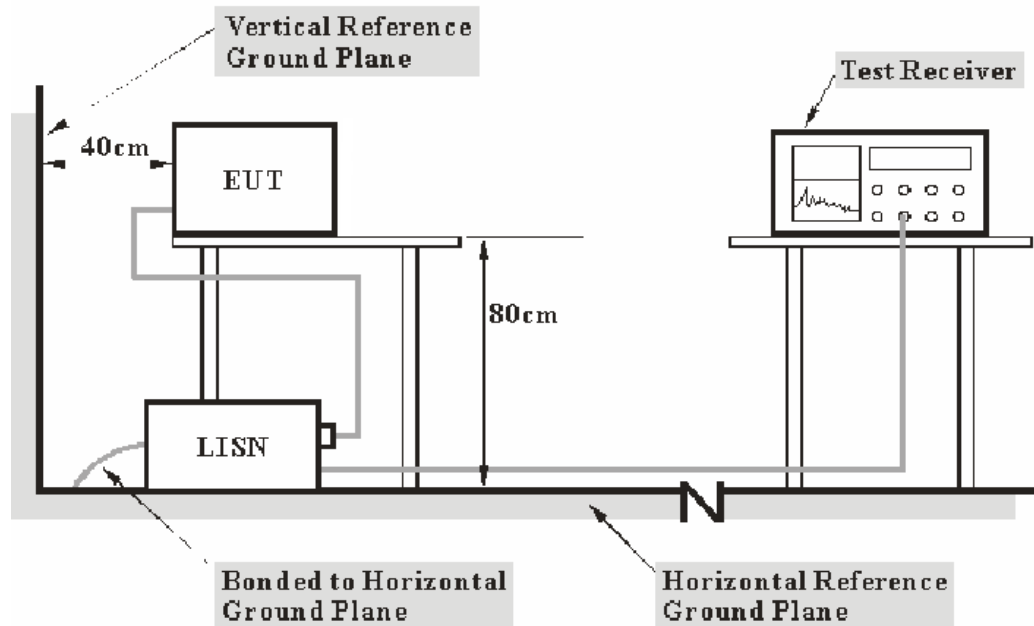
Measurement Uncertainty

Input quantities to be considered for conducted disturbance measurements maybe receiver reading, attenuation of the connection between LISN/ISN and receiver, LISN/ISN voltage division factor, LISN/ISN VDF frequency interpolation and receiver related input quantities, etc.

Based on CISPR 16-4-2:2011, the expended combined standard uncertainty of conducted disturbance test at Bay Area Compliance Laboratories Corp. (Shenzhen) is shown as below. And the uncertainty will not be taken into consideration for the test data recorded in the report

Port	Expanded Measurement uncertainty
AC Mains	3.34 dB (k=2, 95% level of confidence)
CAT 3	3.72 dB (k=2, 95% level of confidence)
CAT 5	3.74 dB (k=2, 95% level of confidence)
CAT 6	4.54 dB (k=2, 95% level of confidence)

Test System Setup



- Note:**
1. Support units were connected to second LISN.
 2. Both of LISNs (AMN) 80 cm from EUT and at the least 80 cm from other units and other metal planes support units.

The measurement procedure of EUT setup is in according with CISPR 16-1-1:2010, CISPR 16-2-1:2013. The related limit was specified in the EN 55022 Class B.

The external I/O cables were draped along the test table and formed a bundle 30 to 40 cm long in the middle.

The spacing between the peripherals was 10 cm.

EMI Test Receiver Setup

The EMI test receiver was set to investigate the spectrum from 150 kHz to 30 MHz.

During the conducted emission test, the EMI test receiver was set with the following configurations:

Frequency Range	IF B/W
150 kHz – 30 MHz	9 kHz

Test Equipment List and Details

Manufacturer	Description	Model	Serial Number	Calibration Date	Calibration Due Date
Rohde & Schwarz	EMI Test Receiver	ESCS30	100176	2015-06-03	2016-06-03
Rohde & Schwarz	LISN 1	ENV216	3560.6650.12-101613-Yb	2015-06-09	2016-06-09
Rohde & Schwarz	Transient Limiter	ESH3Z2	DE25985	2015-05-14	2016-05-14
Rohde & Schwarz	CE Test software	EMC 32	V8.53	NCR	NCR

* **Statement of Traceability:** Bay Area Compliance Laboratories Corp. (Shenzhen) attests that all calibrations have been performed in accordance to requirements that traceable to National Primary Standards and International System of Units (SI).

Test Procedure

Maximizing procedure was performed on the six (6) highest emissions to ensure EUT compliance using all installation combination.

All final data was recorded in the Quasi-peak and average detection mode.

Corrected Factor & Margin Calculation

The Corrected factor is calculated by adding LISN/ISN VDF (Voltage Division Factor), Cable Loss and Transient Limiter Attenuation. The basic equation is as follows:

$$\text{Correction Factor} = \text{LISN/ISN VDF} + \text{Cable Loss} + \text{Transient Limiter Attenuation}$$

The “**Margin**” column of the following data tables indicates the degree of compliance with the applicable limit. For example, a margin of 7dB means the emission is 7 dB below the limit. The equation for margin calculation is as follows:

$$\text{Margin} = \text{Limit} - \text{Corrected Amplitude}$$

Test Results Summary

According to the recorded data in following table, the EUT complied with the limit of EN 55022 Class B, the worst margin reading as below:

12.6 dB at 0.715230 MHz in the **Line** conducted mode

Refer to CISPR16-4-2:2011 and CISPR 16-4-1:2009, the measured level complies with the limit if

$$L_m + U_{(Lm)} \leq L_{lim} + U_{cispr}$$

In BACL, $U_{(Lm)}$ is less than U_{cispr} , if L_m is less than L_{lim} , it implies that the EUT complies with the limit.

Test Data

Environmental Conditions

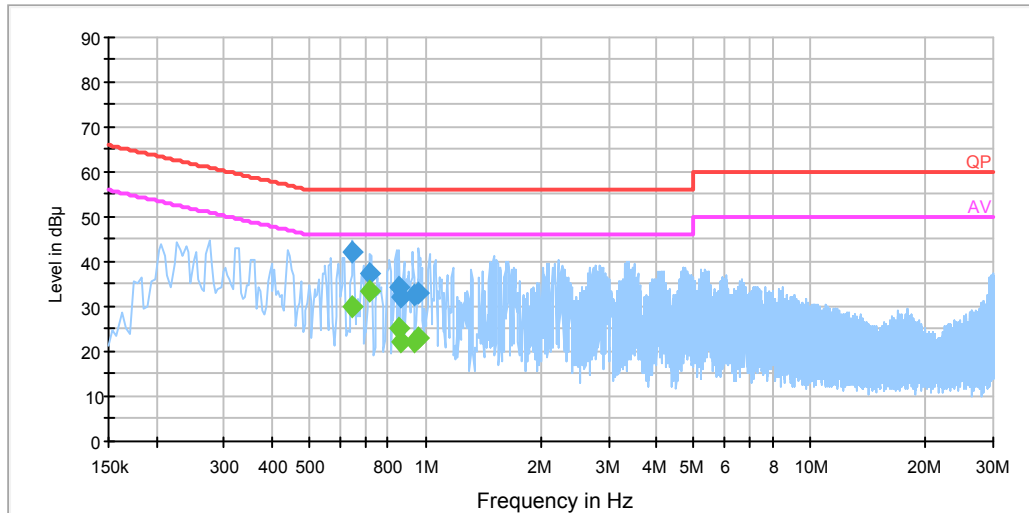
Temperature:	23 °C
Relative Humidity:	60 %
ATM Pressure:	101.0 kPa

The testing was performed by Josen Xiao on 2016-03-18.

EUT operation mode: Charging & Playing

AC 230V/50 Hz, Line

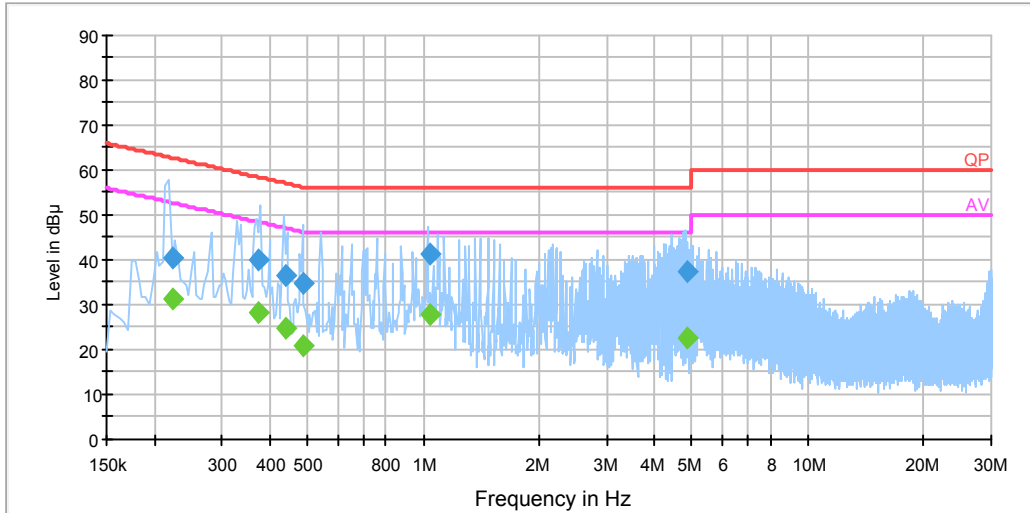
EMI Auto Test L



Frequency (MHz)	Corrected Amplitude (dBµV)	Correction Factor (dB)	Limit (dBµV)	Margin (dB)	Detector (PK/Ave./QP)
0.648310	42.2	19.9	56.0	13.8	QP
0.648310	30.1	19.9	46.0	15.9	Ave.
0.715230	37.6	19.9	56.0	18.4	QP
0.715230	33.4	19.9	46.0	12.6	Ave.
0.853370	34.6	20.0	56.0	21.4	QP
0.853370	25.1	20.0	46.0	20.9	Ave.
0.865130	32.3	20.0	56.0	23.7	QP
0.865130	22.0	20.0	46.0	24.0	Ave.
0.932110	32.5	20.0	56.0	23.5	QP
0.932110	22.3	20.0	46.0	23.7	Ave.
0.963570	33.0	20.0	56.0	23.0	QP
0.963570	22.9	20.0	46.0	23.1	Ave.

AC 230V/50 Hz, Neutral:

EMI Auto Test N



Frequency (MHz)	Corrected Amplitude (dBµV)	Correction Factor (dB)	Limit (dBµV)	Margin (dB)	Detector (PK/Ave./QP)
0.222500	40.2	20.0	62.7	22.5	QP
0.222500	31.2	20.0	52.7	21.5	Ave.
0.372330	40.0	19.9	58.4	18.5	QP
0.372330	28.3	19.9	48.4	20.2	Ave.
0.440510	36.7	19.9	57.1	20.4	QP
0.440510	24.8	19.9	47.1	22.3	Ave.
0.486710	34.7	19.9	56.2	21.5	QP
0.486710	20.8	19.9	46.2	25.4	Ave.
1.038610	41.4	20.0	56.0	14.6	QP
1.038610	27.6	20.0	46.0	18.4	Ave.
4.830150	37.6	20.0	56.0	18.5	QP
4.830150	22.6	20.0	46.0	23.4	Ave.

Note:

- 1) Correction Factor = LISN/ISN VDF (Voltage Division Factor) + Cable Loss + Transient Limiter Attenuation
- 2) Corrected Amplitude = Reading + Correction Factor
- 3) Margin = Limit - Corrected Amplitude

EN 55022 §6-RADIATED DISTURBANCE

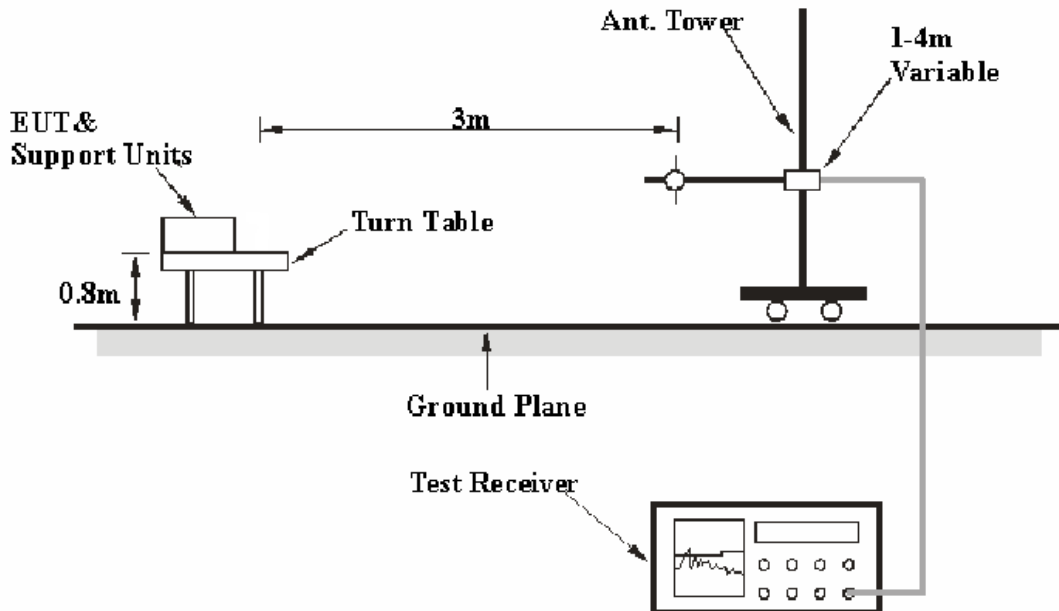
Measurement Uncertainty

All measurements involve certain levels of uncertainties, especially in field of EMC. The factors contributing to uncertainties are spectrum analyzer, cable loss, antenna factor calibration, antenna directivity, antenna factor variation with height, antenna phase center variation, antenna factor frequency interpolation, measurement distance variation, site imperfections, mismatch (average), and system repeatability.

Based on CISPR 16-4-2:2011, the expended combined standard uncertainty of radiation emissions at Bay Area Compliance Laboratories Corp. (Shenzhen) is shown in below table. And the uncertainty will not be taken into consideration for the test data recorded in the report

Frequency	Polarity	Measurement uncertainty
30MHz~200MHz	Horizontal	4.04dB (k=2, 95% level of confidence)
	Vertical	4.52 dB (k=2, 95% level of confidence)
200MHz~1GHz	Horizontal	4.72 dB (k=2, 95% level of confidence)
	Vertical	5.81 dB (k=2, 95% level of confidence)
1 GHz~6 GHz	Horizontal / Vertical	4.64 dB (k=2, 95% level of confidence)
Above 6 GHz	Horizontal / Vertical	4.88 dB (k=2, 95% level of confidence)

Test System Setup



The radiated emission tests were performed in the 3 meters chamber test site, using the setup accordance with the CISPR16-1-4:2012, CISPR 16-2-3:2010. The limit was specified in EN 55022 Class B.

The external I/O cables were draped along the test table and formed a bundle 30 to 40 cm long in the middle.

The spacing between the peripherals was 10 cm.

EMI Test Receiver Setup

The system was investigated from 30 MHz to 6 GHz.

During the radiated emission test, the EMI test receiver Setup was set with the following configurations:

Frequency Range	RBW	Video B/W	IF B/W	Detector
30 MHz – 1000 MHz	100 kHz	300 kHz	120 kHz	QP
Above 1 GHz	1MHz	3 MHz	/	PK
	1MHz	10 Hz	/	Ave.

Test Procedure

Maximizing procedure was performed on the highest emissions to ensure that the EUT complied with all installation combinations.

All final data was recorded in the Quasi-peak detection mode for below 1 GHz, and average and peak detection mode for above 1 GHz.

Test Equipment List and Details

Manufacturer	Description	Model	Serial Number	Calibration Date	Calibration Due Date
TDK	Chamber	Chamber A	2#	2015-10-15	2018-10-15
HP	Amplifier	HP8447E	1937A01046	2015-05-06	2016-05-06
Rohde & Schwarz	EMI Test Receiver	ESCI	101120	2015-11-12	2016-11-12
Sunol Sciences	Broadband Antenna	JB1	A040904-2	2014-12-07	2017-12-06
Rohde & Schwarz	Auto test Software	EMC32	V9.10	NCR	NCR
Rohde & Schwarz	Signal Analyzer	FSIQ26	8386001028	2015-08-22	2016-08-22
Mini	Pre-Amplifier	ZVA-183-S+	5969001149	2015-04-23	2016-04-23
A.H.System	Horn Antenna	SAS-200/571	135	2016-02-11	2019-02-10
TDK	Chamber	Chamber B	1#	2013-07-22	2016-07-22

* **Statement of Traceability:** Bay Area Compliance Laboratories Corp. (Shenzhen) attests that all calibrations have been performed in accordance to requirements that traceable to National Primary Standards and International System of Units (SI).

Corrected Amplitude & Margin Calculation

The Corrected Amplitude is calculated by adding the Antenna Factor and Cable Loss, and subtracting the Amplifier Gain from the Meter Reading. The basic equation is as follows:

$$\text{Corrected Amplitude} = \text{Meter Reading} + \text{Antenna Factor} + \text{Cable Loss} - \text{Amplifier Gain}$$

The “**Margin**” column of the following data tables indicates the degree of compliance with the applicable limit. For example, a margin of 7 dB means the emission is 7 dB below the limit for Class B. The equation for margin calculation is as follows:

$$\text{Margin} = \text{Limit} - \text{Corrected Amplitude.}$$

Test Results Summary

According to the data in the following table, the EUT complied with the limit of EN 55022 Class B, the worst margin reading as below:

6.95 dB at 36.242500 in the Vertical polarization for Charging &Playing Mode

Refer to CISPR16-4-2:2011 and CISPR 16-4-1:2009, the measured level complies with the limit if

$$L_m + U_{(L_m)} \leq L_{lim} + U_{cispr}$$

In BACL., $U_{(L_m)}$ is less than $+ U_{cispr}$, if L_m is less than L_{lim} , it implies that the EUT complies with the limit.

Test Data

Environmental Conditions

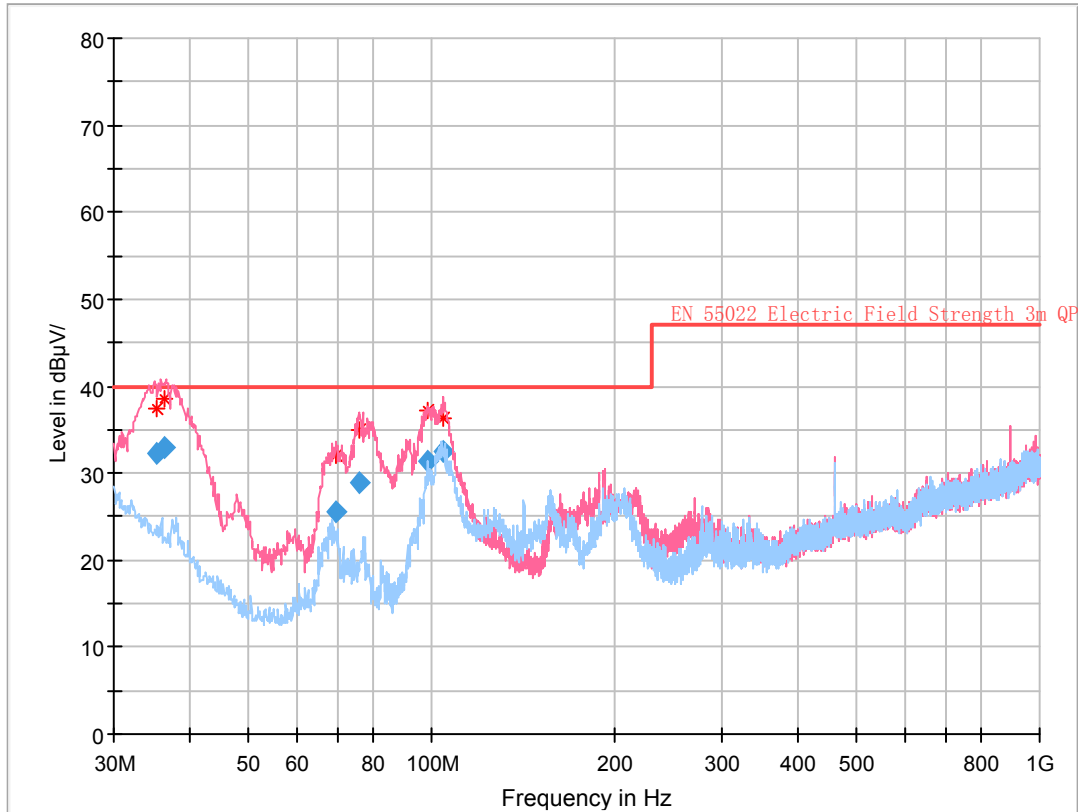
Temperature:	22°C
Relative Humidity:	48 %
ATM Pressure:	101.0 kPa

The testing was performed by Joson Xiao on 2016-03-19.

30 MHz ~ 1000 MHz

EUT operation mode: Charging & Playing

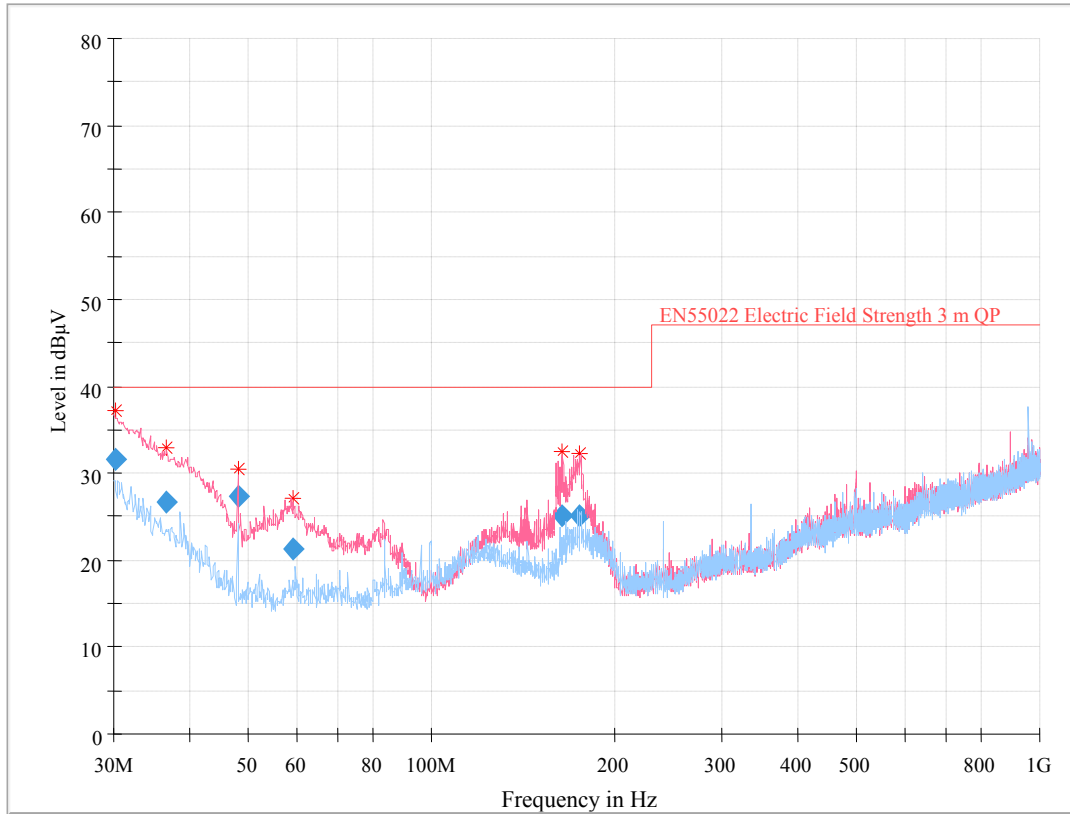
Full Spectrum



Frequency (MHz)	Corrected Amplitude (dBµV/m)	Antenna height (cm)	Antenna Polarity	Turntable position (deg)	Correction Factor (dB/m)	Limit (dBµV/m)	Margin (dB)
35.412750	32.31	101.0	V	327.0	-4.4	40.00	7.69
36.242500	33.05	104.0	V	310.0	-5.0	40.00	6.95
69.712375	25.58	131.0	V	180.0	-13.6	40.00	14.42
76.218250	28.99	100.0	V	27.0	-13.3	40.00	11.01
98.211500	31.43	101.0	V	34.0	-11.2	40.00	8.57
104.173750	32.49	110.0	V	68.0	-9.5	40.00	7.51

EUT operation mode: Downloading

Full Spectrum



Frequency (MHz)	Corrected Amplitude (dBµV/m)	Antenna height (cm)	Antenna Polarity	Turntable position (deg)	Correction Factor (dB/m)	Limit (dBµV/m)	Margin (dB)
30.271625	31.61	124.0	V	19.0	-0.1	40.00	8.39
36.555625	26.61	100.0	V	0.0	-5.2	40.00	13.39
47.998750	27.25	153.0	V	24.0	-12.6	40.00	12.75
59.043375	21.35	119.0	V	205.0	-13.9	40.00	18.65
164.296000	25.10	102.0	V	309.0	-8.2	40.00	14.90
175.479250	25.00	104.0	V	341.0	-8.9	40.00	15.00

1 GHz~ 6 GHz*EUT operation mode: Charging & Playing*

Frequency (MHz)	Reading (dB μ V)	Detector (PK/QP/Ave.)	Turntable Degree	Height (m)	Polar (H/V)	Corrected Factor (dB/m)	Corrected Amplitude (dB μ V/m)	Limit (dB μ V/m)	Margin (dB)
1791.58	43.80	PK	61	2.5	H	-13.21	30.59	70	39.41
1791.58	29.73	AV	61	2.5	H	-13.21	16.52	50	33.48
3795.59	47.10	PK	161	2.0	V	-1.28	45.82	74	28.18
3795.59	43.51	AV	161	2.0	V	-1.28	42.23	54	11.77

EUT operation mode: Downloading

Frequency (MHz)	Reading (dB μ V)	Detector (PK/QP/Ave.)	Turntable Degree	Height (m)	Polar (H/V)	Corrected Factor (dB/m)	Corrected Amplitude (dB μ V/m)	Limit (dB μ V/m)	Margin (dB)
1030.06	50.64	PK	192	1.6	H	-12.59	38.05	70	31.95
1030.06	47.75	AV	192	1.6	H	-12.59	35.16	50	14.84
1260.52	54.24	PK	5	2.0	V	-11.84	42.4	70	27.6
1260.52	33.69	AV	5	2.0	V	-11.84	21.85	50	28.15
1350.70	52.77	PK	350	1.7	V	-11.73	41.04	70	28.96
1350.70	33.26	AV	350	1.7	V	-11.73	21.53	50	28.47

Note:

- 1) Correction Factor = Antenna Factor + Cable Loss - Amplifier Gain
- 2) Corrected Amplitude = Meter Reading + Correction Factor
- 3) Margin = Limit - Corrected Amplitude

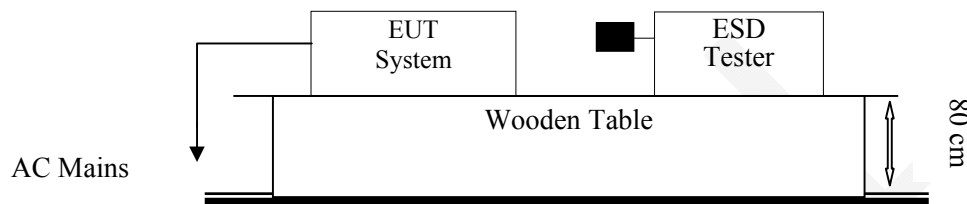
EN 55024 §4.2.1-ELECTROSTATIC DISCHARGES (IEC 61000-4-2)

Test Equipment

Manufacturer	Description	Model	Serial Number	Calibration Date	Calibration Due Date
EM Test	ESD Tester	Dito	302105	2015-11-04	2016-11-04

* **Statement of Traceability:** Bay Area Compliance Laboratories Corp. (Shenzhen) attests that all calibrations have been performed in accordance to requirements, traceable to National Primary Standards and International System of Units (SI).

Test System Setup



Remark: ■ is the tip of the electrode

IEC 61000-4-2 specifies that a tabletop EUT shall be placed on a non-conducting table which is 80 centimeters above a ground reference plane and that floor mounted equipment shall be placed on a insulating support approximately 10 centimeters above a ground plane. During the tests, the EUT is positioned over a ground reference plane in conformance with this requirement.

For tabletop equipment, a 1.6 by 0.8-meter metal sheet (HCP) is placed on the table and connected to the ground plane via a metal strap with two 470 k Ohms resistors in series. The EUT and attached cables are isolated from this metal sheet by 0.5-millimeter thick insulating material. A Vertical Coupling Plane (VCP) grounded on the ground plane through the same configuration as in the HCP is used.

Test Standard

EN 55024:2010 (IEC 61000-4-2:2008)
 Air Discharge at ±2 kV; ±4 kV; ±8 kV
 Contact Discharge at ±2 kV; ±4 kV

Test Level

Level	Test Voltage Contact Discharge (±kV)	Test Voltage Air Discharge (±kV)
1.	2	2
2.	4	4
3.	6	8
4.	8	15
X.	Special	Special

Performance criterion: B

Test Procedure

Air Discharge:

This test is done on a non-conductive surface. The round discharge tip of the discharge electrode shall be approached as fast as possible to touch the EUT. After each discharge, the discharge electrode shall be removed from the EUT. The generator is then re-triggered for a new single discharge and repeated 10 times for each pre-selected test point. This procedure shall be repeated until all the air discharge completed.

Contact Discharge:

All the procedure shall be same as Section 8.3.1 of IEC 61000-4-2, except that the tip of the discharge electrode shall touch the EUT before the discharge switch is operated.

Indirect discharge for horizontal coupling plane

At least 50 single discharges shall be applied to the horizontal coupling plane, at points on each side of the EUT. The discharge electrode positions vertically at a distance of 0.1 m from the EUT and with the discharge electrode touching the coupling plane.

Indirect discharge for vertical coupling plane

At least 50 single discharges shall be applied to the center of one vertical edge of the coupling plane. The coupling plane, of dimensions 0.5m × 0.5m, is placed parallel to, and positioned at a distance of 0.1m from the EUT. Discharges shall be applied to the coupling plane, with this plane in sufficient different positions that the four faces of the EUT are completely illuminated.

Test Data and Setup Photo

Environmental Conditions

Temperature:	24°C
Relative Humidity:	59 %
ATM Pressure:	101.0 kPa

The testing was performed by Joson Xiao on 2016-03-23.

EUT operation mode: Charging & playing & downloading

Table 1: Electrostatic Discharge Immunity (Air Discharge)

IEC 61000-4-2 Test Points	Test Levels							
	-2 kV	+2 kV	-4 kV	+4 kV	-8 kV	+8 kV	-15 kV	+15 kV
Front (8 points)	A	A	A	A	A	A	/	/
Rear (3 points)	A	A	A	A	A	A	/	/
Left (3 points)	A	A	A	A	A	A	/	/
Right (2 points)	A	A	A	A	A	A	/	/
Top (2 points)	A	A	A	A	A	A	/	/
Bottom (2 points)	A	A	A	A	A	A	/	/

Table 2: Electrostatic Discharge Immunity (Direct Contact)

IEC 61000-4-2 Test Points	Test Levels							
	-2 kV	+2 kV	-4 kV	+4 kV	-6 kV	+6 kV	-8 kV	+8 kV
/	/	/	/	/	/	/	/	/



Table 3: Electrostatic Discharge Immunity (Indirect Contact HCP)

IEC 61000-4-2 Test Points	Test Levels							
	-2 kV	+2 kV	-4 kV	+4 kV	-6 kV	+6 kV	-8 kV	+8 kV
Front Side	A	A	A	A	/	/	/	/
Back Side	A	A	A	A	/	/	/	/
Left Side	A	A	A	A	/	/	/	/
Right Side	A	A	A	A	/	/	/	/

Table 4: Electrostatic Discharge Immunity (Indirect Contact VCP)

IEC 61000-4-2 Test Points	Test Levels							
	-2 kV	+2 kV	-4 kV	+4 kV	-6 kV	+6 kV	-8 kV	+8 kV
Front Side	A	A	A	A	/	/	/	/
Back Side	A	A	A	A	/	/	/	/
Left Side	A	A	A	A	/	/	/	/
Right Side	A	A	A	A	/	/	/	/



Note:  represents air discharge,  represents direct contact

Test Mode: Charging & Playing



Test Mode: Downloading



Test Setup Photos

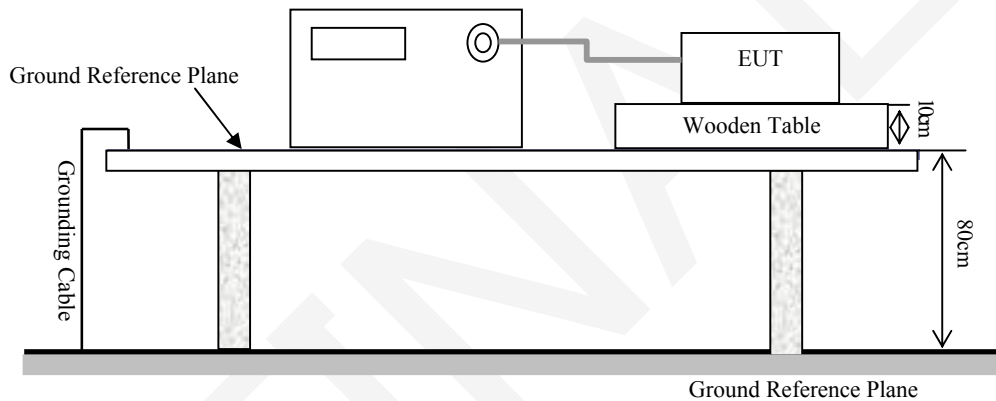
EN 55024 §4.2.2-ELECTRICAL FAST TRANSIENTS (IEC 61000-4-4)

Test Equipment

Manufacturer	Description	Model	Serial Number	Calibration Date	Calibration Due Date
EM Test	EMS Combination Tester	UCS 500 N5	V0939105172	2015-11-03	2016-11-03
EM TEST	AC Source	MV2616	V0939105173	2015-11-03	2016-11-03
EM Test	Test Software	ICE. Control	V5.1.3.0	NCR	NCR

* **Statement of Traceability:** Bay Area Compliance Laboratories Corp. (Shenzhen) attests that all calibrations have been performed in accordance to requirements that traceable to National Primary Standards and International System of Units (SI).

Test System Setup



Test Standard

EN 55024:2010 (IEC 61000-4-4:2004)
 Test level 2 at 1 kV for AC mains

Test Level

Open Circuit Output Test Voltage ±10%		
Level	On Power Supply Lines	On I/O (Input/Output) Signal data and control lines
1	0.5 kV	0.25 kV
2	1 kV	0.5 kV
3	2 kV	1 kV
4	4 kV	2 kV
X	Special	Special

Performance Criterion: B

Test Procedure

The EUT was arranged for Power Line Coupling and for I/O Line Coupling through a capacitive clamp, where applicable. (Note: The I/O coupling test using a capacitive clamp is performed on the I/O interface cables that are longer in length than 3 meters.) A metal ground plane 2.4 meter by 2.0 meter was placed between the floor and the table and is connected to the earth by a 2.0 meter ground rod. The ground rod is connected to the test facility’s electrical earth.

Test Data and Setup Photo

Environmental Conditions

Temperature:	24 °C
Relative Humidity:	59 %
ATM Pressure:	101.0 kPa

The testing was performed by Joson Xiao on 2016-03-23.

EUT operation mode: Charging & playing

IEC 61000-4-4 Test Points		Test Levels (kV)							
		+0.5	-0.5	+1.0	-1.0	+2.0	-2.0	+4.0	-4.0
AC mains power input ports	L1	/	/	/	/	/	/	/	/
	N	/	/	/	/	/	/	/	/
	PE	/	/	/	/	/	/	/	/
	L1/N	/	/	A	A	/	/	/	/
	L/PE	/	/	/	/	/	/	/	/
	N/PE	/	/	/	/	/	/	/	/
	L1/N/PE	/	/	/	/	/	/	/	/



Test Setup Photo

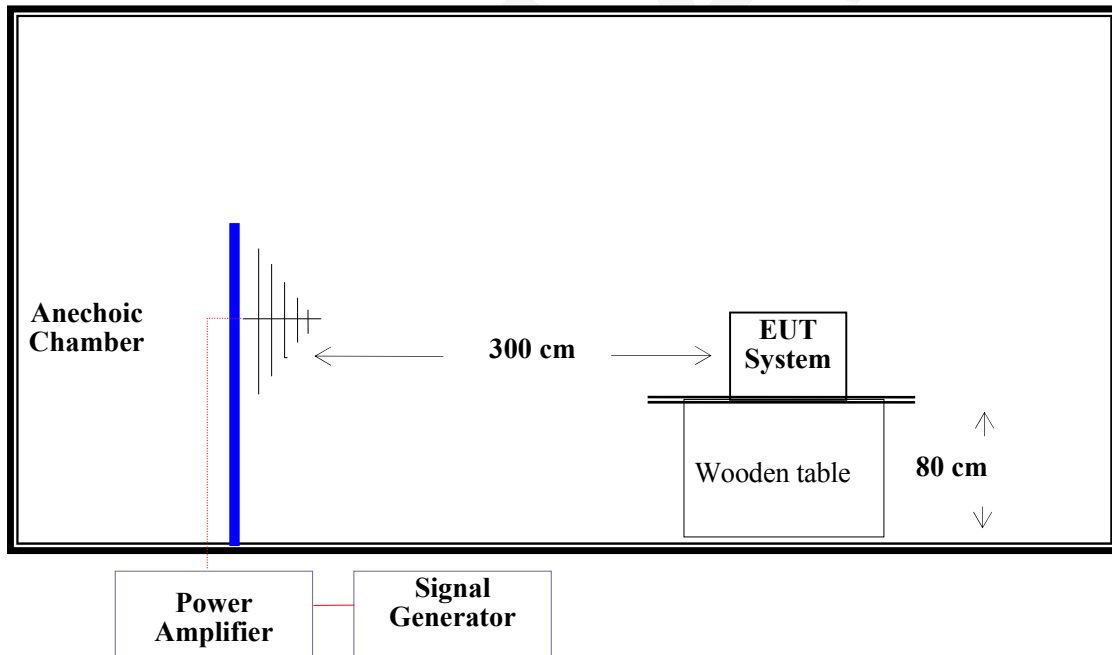
EN 55024 §4.2.3.1-CONTINUOUS RADIATED IMMUNITY (IEC 61000-4-3)

Test Equipment

Manufacturer	Description	Model	Serial Number	Calibration Date	Calibration Due Date
HP	Signal Generator	8648C	3426A01345	2015-06-09	2016-06-09
Amplifier Research	Field Monitor	FM5004	302149	2016-01-08	2019-01-08
ETS-Lindgreen	Isotropic Field Probe	HI-6005	69461	2016-01-08	2019-01-08
Amplifier Research	Amplifier Input / Output	200W1000/M2	H1004497	2015-11-03	2016-11-03
Sunol Sciences	Bi-log Antenna	JB1	A040904-1	NCR	NCR
ETS	Fully Anechoic Chamber	A017	3943A017	2013-05-26	2016-05-25
Frank Hoppert	RS Test Software	RSUS	V2.133	NCR	NCR

* **Statement of Traceability:** Bay Area Compliance Laboratories Corp. (Shenzhen) attests that all calibrations have been performed in accordance to requirements that traceable to National Primary Standards and International System of Units (SI).

Test System Setup



Test Standard

EN 55024:2010 (IEC 61000-4-3: 2006 + A1:2007 + A2:2010)
 Test level 2 at 3V / m

Test Level

Level	Field Strength V/m
1.	1
2.	3
3.	10
X.	Special

Performance Criterion: A

Test Procedure

The EUT and its simulators are placed on a turn table which is 0.8 meter above the ground. The EUT is set 3 meters away from the transmitting antenna which is mounted on an antenna tower. Both horizontal and vertical polarizations of the antenna are set on test. Each of the four sides of EUT must be faced this transmitting antenna and measured individually. In order to judge the EUT performance, a CCD camera is used to monitor the EUT.

All the scanning conditions are as follows:

Condition of Test	Remarks
1. Field Strength	3 V/m (Test level 2)
2. Radiated Signal	AM 80%, 1 kHz Modulation
3. Scanning Frequency	80 – 1000 MHz
4. Sweeping time of radiated	0.0015decade/s
5. Dwell Time	1 sec.

Test Data and Setup Photo

Environmental Conditions

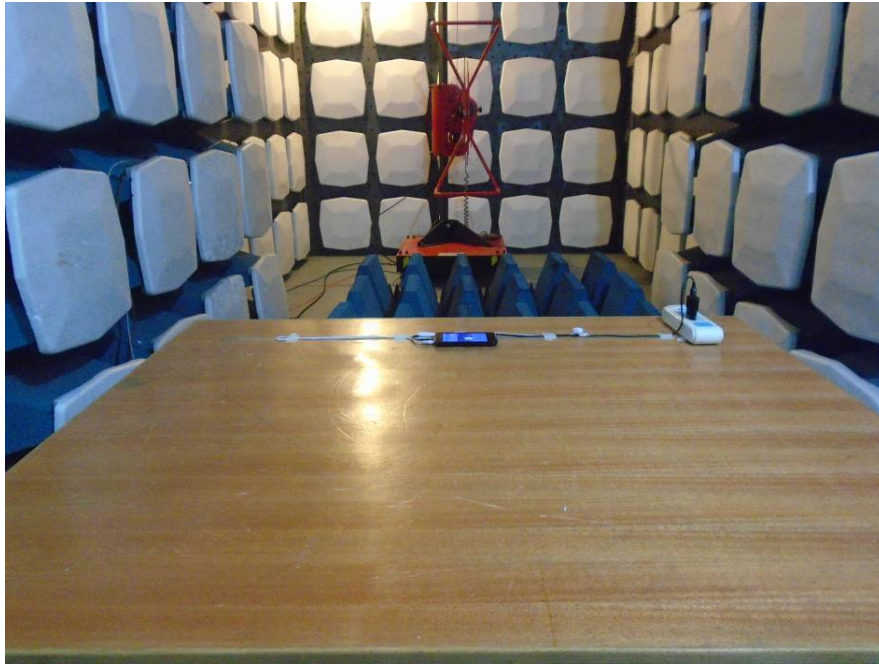
Temperature:	24°C
Relative Humidity:	59 %
ATM Pressure:	101.0 kPa

The testing was performed by Joson Xiao on 2016-03-23.

EUT operation mode: Charging & playing & Downloading

Frequency Range (MHz)	Front Side (3 V/m)		Rear Side (3 V/m)		Left Side (3 V/m)		Right Side (3 V/m)	
	VERT	HORI	VERT	HORI	VERT	HORI	VERT	HORI
80-1000	A	A	A	A	A	A	A	A

Test Mode: Charging & Playing



Test Mode: Downloading



Test Setup Photos

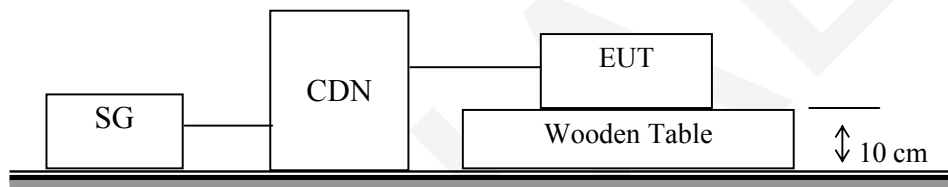
EN 55024 §4.2.3.2-CONTINUOUS CONDUCTED IMMUNITY (IEC 61000-4-6)

Test Equipment

Manufacturer	Description	Model	Serial Number	Calibration Date	Calibration Due Date
EM Test	C/S Tester	CWS500	303277	2015-11-03	2016-11-03
EM Test	CDN	M3	1201-05	2015-11-03	2016-11-03
EM Test	Attenuator	6 dB	120518	2015-11-12	2016-11-12

* **Statement of Traceability:** Bay Area Compliance Laboratories Corp. (Shenzhen) attests that all calibrations have been performed in accordance to requirements that traceable to National Primary Standards and International System of Units (SI).

Test Setup



Test Standard

EN 55024:2010 (IEC 61000-4-6:2008)

Test Level 2 at 3 V r.m.s. (unmodulated), 0.15 MHz ~ 80 MHz

Test Level

Level	Voltage Level (r.m.s.) (V)
1	1
2	3
3	10
X	Special

Performance Criterion: A

Test Procedure

- 1) Let the EUT work in test mode and test it.
- 2) The EUT are placed on an insulating support 0.1 m high above a ground reference plane. CDN (coupling and decoupling device) is placed on the ground plane about 0.3 m from EUT. Cables between CDN and EUT are as short as possible, and their height above the ground reference plane shall be between 30 and 50 mm (where possible).
- 3) The disturbance signal described below is injected to EUT through CDN.
- 4) The EUT operates within its operational mode(s) under intended climatic conditions after power on.
- 5) The frequency range is swept from 150 kHz to 80 MHz using 3V signal level, and with the disturbance signal 80% amplitude modulated with a 1 kHz sine wave.
- 6) The rate of sweep shall not exceed 1.5×10^{-3} decades/s. Where the frequency is swept incrementally, the step size shall not exceed 1% of the start and thereafter 1% of the preceding frequency value.
- 7) An artificial ear and sound level meter are used to monitor the sound pressure level. RF communication test set is used to monitor the noise level.
- 8) Recording the EUT operating situation during compliance testing and decide the EUT immunity criterion.

Test Data and Setup Photo

Environmental Conditions

Temperature:	24 °C
Relative Humidity:	59 %
ATM Pressure:	101.0 kPa

The testing was performed by Joson Xiao on 2016-03-23.

EUT operation mode: Charging & Playing

Table: AC Mains

Modulation: Amplitude 80%, 1 kHz sine wave

Test Level: 3V r.m.s, unmodulated.

Level	Voltage Level (r.m.s.) U ₀	Pass	Fail
1	1	/	/
2	3	A	/
3	10	/	/
X	Special	/	/



Test setup photo

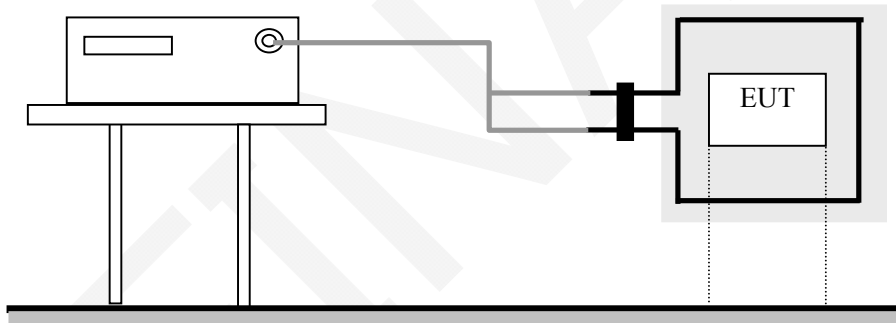
EN 55024 §4.2.4-POWER FREQUENCY MAGNETIC FIELDS (IEC 61000-4-8)

Test Equipment

Manufacturer	Description	Model	Serial Number	Calibration Date	Calibration Due Date
EM Test	EMS Combination Tester	UCS 500 M6	V0939105172	2015-11-03	2016-11-03
EM TEST	AC Source	MV2616	V0939105173	2015-11-03	2016-11-03
EM Test	Current Transformer	MC 2630	0309-59	2015-11-03	2016-11-03
EM Test	Loop Antenna	MS100	0809-05	2015-11-03	2016-11-03
EW BELL	ELF Gauss /Tesla Meter	4190	0911011	2015-11-18	2016-11-18
EM Test	Test Software	IEC. Control	V5.1.3.0	NCR	NCR

* **Statement of Traceability:** Bay Area Compliance Laboratories Corp. (Shenzhen) attests that all calibrations have been performed in accordance to requirements that traceable to National Primary Standards and International System of Units (SI).

Test Setup



Test Standard

EN 55024:2010 (IEC 61000-4-8:2009)
 Test level 1 at 1A/m

Test Level

Level	Magnetic Field Strength A/m
1	1
2	3
3	10
4	30
5	100
X.	Special

Performance criterion: A

Test Procedure

The EUT shall be subjected to the test magnetic field by using the induction coil of standard dimensions (1 m*1 m). The induction coil shall then be rotated by 90° in order to expose the EUT to the test field with different orientations.

Test Data and Setup Photo

Environmental Conditions

Temperature:	24 °C
Relative Humidity:	59 %
ATM Pressure:	101.0kPa

The testing was performed by Joson Xiao on 2016-03-23.

EUT operation mode: Charging & Playing & Downloading

Level	Magnetic Field Strength A/m	X (Horizontal)	Y (Vertical)	Z (Special)
1	1	A	A	A
2	3	/	/	/
3	10	/	/	/
4	30	/	/	/
5	100	/	/	/
X	Special	/	/	/

Test Mode: Charging & Playing



Test Mode: Downloading



Test Setup Photos

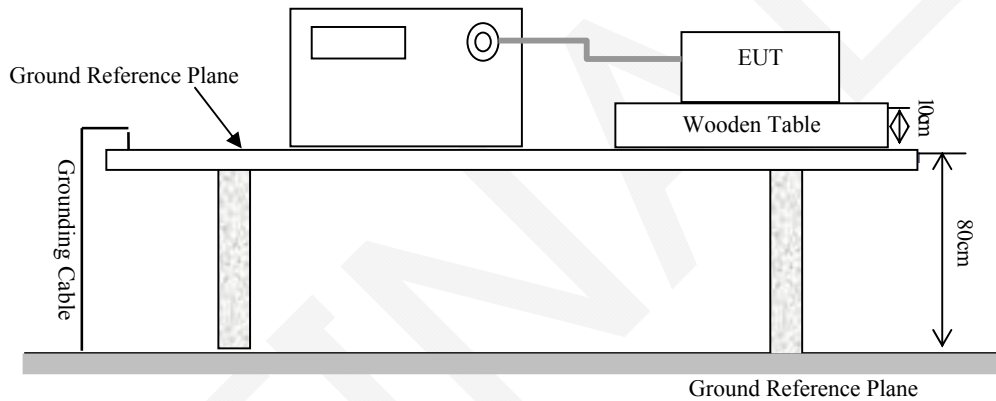
EN 55024 §4.2.5-SURGES (IEC 61000-4-5)

Test Equipment

Manufacturer	Description	Model	Serial Number	Calibration Date	Calibration Due Date
EM Test	EMS Combination Tester	UCS 500 M6	V0939105172	2015-11-03	2016-11-03
EM TEST	AC Source	MV2616	V0939105173	2015-11-03	2016-11-03
EM Test	Test Software	IEC. Control	V5.1.3.0	NCR	NCR

*** Statement of Traceability:** Bay Area Compliance Laboratories Corp. (Shenzhen) attests that all calibrations have been performed in accordance to requirements that traceable to National Primary Standards and International System of Units (SI).

Test System Setup



Test Standard

EN 55024:2010 (IEC 61000-4-5:2005)
 AC mains:
 Line to Line at 0.5kV, 1kV;

Test Level

Level	Open Circuit Output Test Voltage ±10%	Performance Criterion	
		AC Mains	Signal Port
1	0.5 kV	B	C
2	1 kV	B	C
3	2 kV	B	C
4	4 kV	B	C
X	Special	/	/

Test Procedure

- 1) For input a.c. power ports, provide a 1.2/50 μ s voltage surge (at open-circuit condition) and a 8/20 μ s current surge into a short circuit.
- 2) For signal ports and telecommunication ports, provide a 10/700 μ s voltage surge (at open-circuit condition) and a 5/320 μ s current surge into a short circuit.
- 3) At least 5 positive and 5 negative (polarity) tests with a maximum 1/min repetition rate are conducted during test.
- 4) Different phase angles are done individually.
- 5) Record the EUT operating situation during compliance test and decide the EUT immunity criterion for above each test.

Test Data and Setup Photo

Environmental Conditions

Temperature:	24°C
Relative Humidity:	59 %
ATM Pressure:	101.0 kPa

The testing was performed by Joson Xiao on 2016-03-23.

EUT operation mode: Charging & Playing

Table 1: AC mains power input port

Level	Voltage	Poll	Path	Pass	Fail
1	0.5kV	\pm	L1/N	A	/
2	1kV	\pm	L1/N	A	/
3	2kV	\pm	L1/PE, N/PE, L1/N/PE	/	/
4	4kV	\pm	L1/N, L1/PE, N/PE, L1/N/PE	/	/



Test Setup Photo

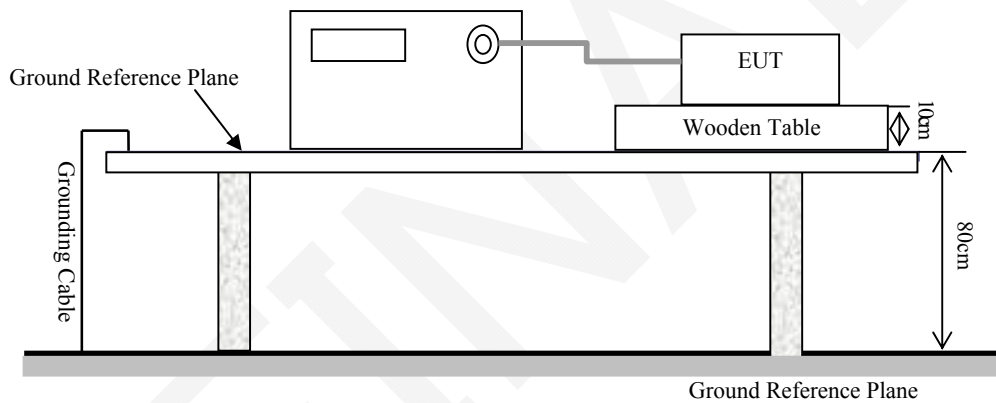
EN 55024 §4.2.6-VOLTAGE DIPS AND INTERRUPTIONS (IEC 61000-4-11)

Test Equipment

Manufacturer	Description	Model	Serial Number	Calibration Date	Calibration Due Date
EM Test	EMS Combination Tester	UCS 500 M6	V0939105172	2015-11-03	2016-11-03
EM TEST	AC Source	MV2616	V0939105173	2015-11-03	2016-11-03
EM Test	Test Software	IEC. Control	V5.1.3.0	NCR	NCR

* **Statement of Traceability:** Bay Area Compliance Laboratories Corp. (Shenzhen) attests that all calibrations have been performed in accordance to requirements that traceable to National Primary Standards and International System of Units (SI).

Test Setup



Test Standard

EN 55024:2010 (IEC 61000-4-11:2004)
 Test levels and Performance Criterion

Test Level	Voltage dip and short interruptions %UT	Duration (Periods)	Performance Criterion
1	>95	0.5	B
2	30	25	C
3	>95	250	C

Test Procedure

- 1) The interruption is introduced at selected phase angles with specified duration.
- 2) Record any degradation of performance.

Test Data and Setup Photo

Environmental Conditions

Temperature:	24°C
Relative Humidity:	59 %
ATM Pressure:	101.0 kPa

The testing was performed by Joson Xiao on 2016-03-23.

EUT operation mode: Charging & Playing

Level	U2 (% Reduction)	Td(Periods)	Phase Angle	N	Pass	Fail
1	100	0.5	0/180	3	A	/
2	30	25	0/180	3	A	/
3	100	250	0/180	3	B	/

Note: "B" means self-restoring after charging was broken off for a while during the testing



Test Setup Photo

EN 61000-3-2 – HARMONIC CURRENT EMISSIONS

According to EN 61000-3-2:2006 + A1:2009 + A2:2009 section 7: Equipment with a rated power of 75 W or less, other than lighting equipment, are not included in this standard.

F I N A L

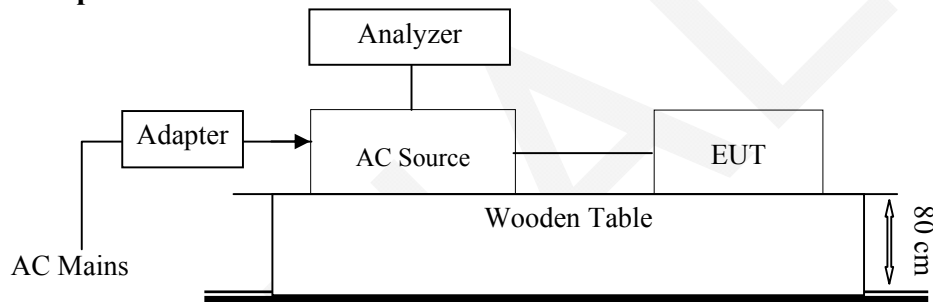
EN 61000-3-3 – VOLTAGE FLUCTUATION AND FLICKER

Test Equipment

Manufacturer	Description	Model	Serial Number	Calibration Date	Calibration Due Date
EM Test	Harmonic/Flicker Analyzer	DPA 500N	V0939105176	2015-11-03	2016-11-03
EM Test	AC Source	ACS500	303276	2015-11-03	2016-11-03
EM Test	Test Software	DPA. Control	V5.0.3.0	2015-11-03	2016-11-03

* **Statement of Traceability:** Bay Area Compliance Laboratories Corp. (Shenzhen) attests that all calibrations have been performed in accordance to requirements that traceable to National Primary Standards and International System of Units (SI).

Test System Setup



Test Standard

EN 61000-3-3:2013

Flicker Test Limits:

The limits shall be applicable to voltage fluctuations and flicker at the supply terminals of the equipment under test, measured or calculated according to clause 4 under test conditions described in clause 6 and annex A. Tests made to prove compliance with the limits are considered to be type tests.

The following limits apply:

- the value of Pst shall not be greater than 1,0;
- the value of Plt shall not be greater than 0,65;
- the value of d(t) during a voltage change shall not exceed 3,3 % for more than 500 ms;
- the relative steady-state voltage change, dc, shall not exceed 3,3 %;
- the maximum relative voltage change dmax, shall not exceed

a) 4 % without additional conditions;

b) 6 % for equipment which is:

- switched manually, or
- switched automatically more frequently than twice per day, and also has either a delayed restart (the delay being not less than a few tens of seconds), or manual restart, after a power supply interruption.

Note: The cycling frequency will be further limited by the Pst and Plt limit. For example: a dmax of 6 % producing a rectangular voltage change characteristic twice per hour will give a Plt of about 0.65.

- c) 7 % for equipment which is
 - attended whilst in use (for example: hair dryers, vacuum cleaners, kitchen equipment such as mixers, garden equipment such as lawn mowers, portable tools such as electric drills), or
 - switched on automatically, or is intended to be switched on manually, no more than twice per day, and also has either a delayed restart (the delay being not less than a few tens of seconds) or manual restart, after a power supply interruption.

In the case of equipment having several separately controlled circuits in accordance with 6.6, limits b) and c) shall apply only if there is delayed or manual restart after a power supply interruption; for all equipment with automatic switching which is energized immediately on restoration of supply after a power supply interruption, limits a) shall apply; for all equipment with manual switching, limits b) or c) shall apply depending on the rate of switching. Pst and Plt requirements shall not be applied to voltage changes caused by manual switching. The limits shall not be applied to voltage changes associated with emergency switching or emergency interruptions.

Test Data and Setup Photo

Environmental Conditions

Temperature:	24 °C
Relative Humidity:	59 %
ATM Pressure:	101.0 kPa

Test mode: Charging & Playing

Date of test:	14:52 23.Mar 2016
Tester:	Joson Xiao
Standard used:	EN/IEC 61000-3-3 Flicker
Long time (Pst):	10 min
Observation time:	120 min (12 Flicker measurements)
Flicker meter:	230V / 50Hz
Customer:	Advanced
E. U. T.:	Smartphone Xylo
Model:	Xylo Q
EUT operation mode:	Charging & playing

Maximum Flicker results

	EUT values	Limit	Result
Pst	0.028	1.00	Pass
Plt	0.028	0.65	Pass
dc [%]	0.014	3.30	Pass
dmax [%]	0.052	4.00	Pass
dt [s]	0.000	0.50	Pass

**Test Setup photo**

EXHIBIT A - PRODUCT CE LABELING

Proposed CE Label Format



Specification: The marking set out above must be affixed to the apparatus or to its data plate and have a minimum height of 5 mm. The elements should be easily readable and indelible. They may be placed anywhere on the apparatus case or in its battery compartment. No tool should be needed to view the marking

Proposed Label Location on EUT



Model: Xylo Q

Model: Xylo X

EXHIBIT B - EUT PHOTOGRAPHS

Model: Xylo Q

EUT – Front View



EUT – Rear View



EUT – Top View



EUT – Bottom View



EUT –Left Side View



EUT – Right Side View



EUT –Cover off View 1



EUT –Cover off View 2



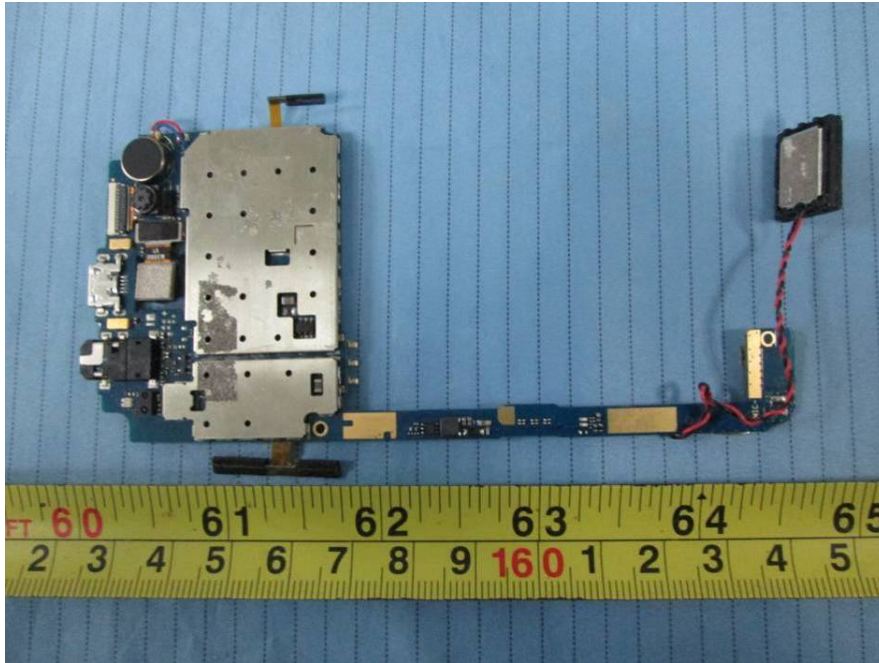
EUT –Cover off View 3



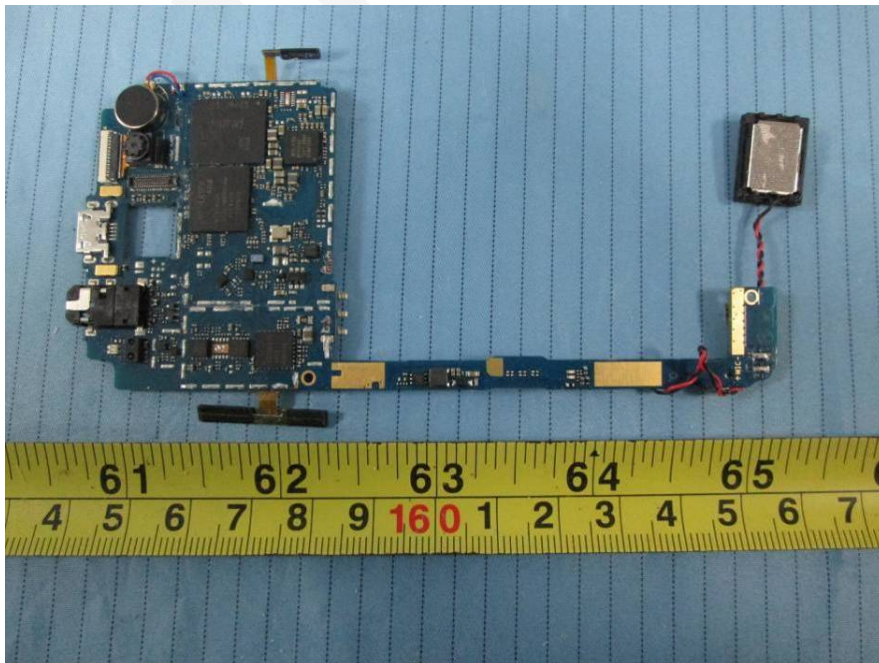
EUT –Cover off View 4



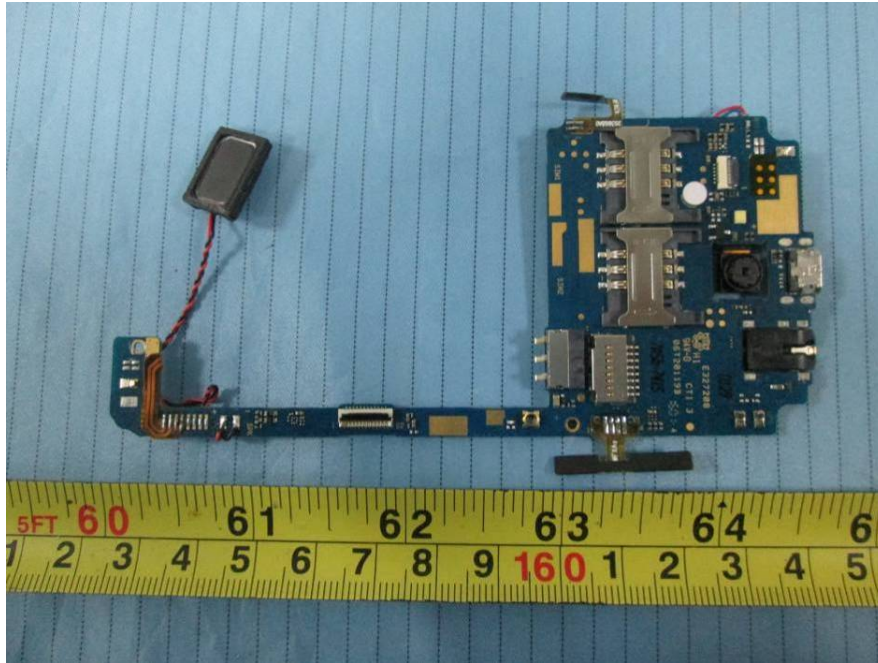
EUT – Main Board Top View



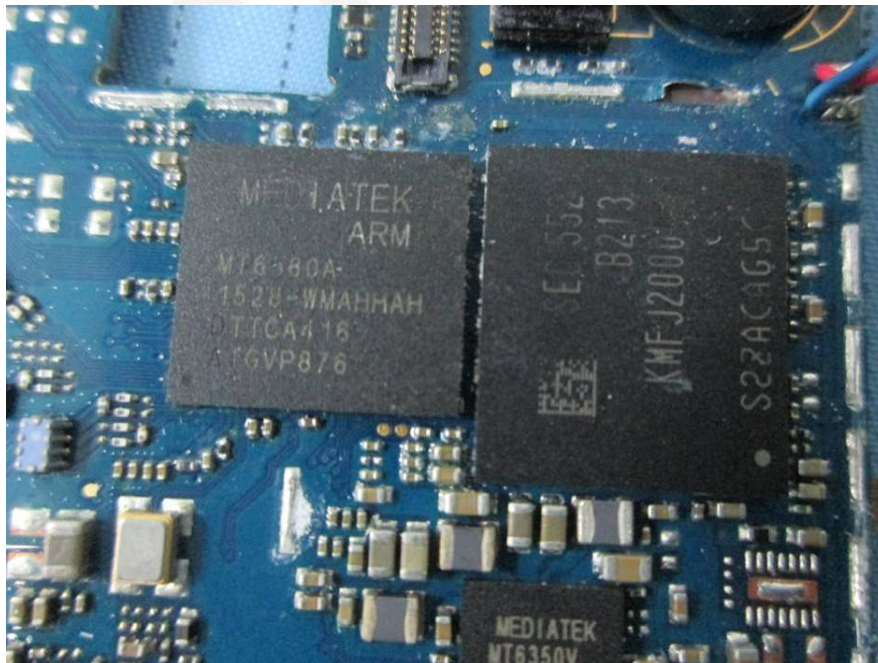
EUT – Main Board Top Shielding off View



EUT – Main Board Bottom View



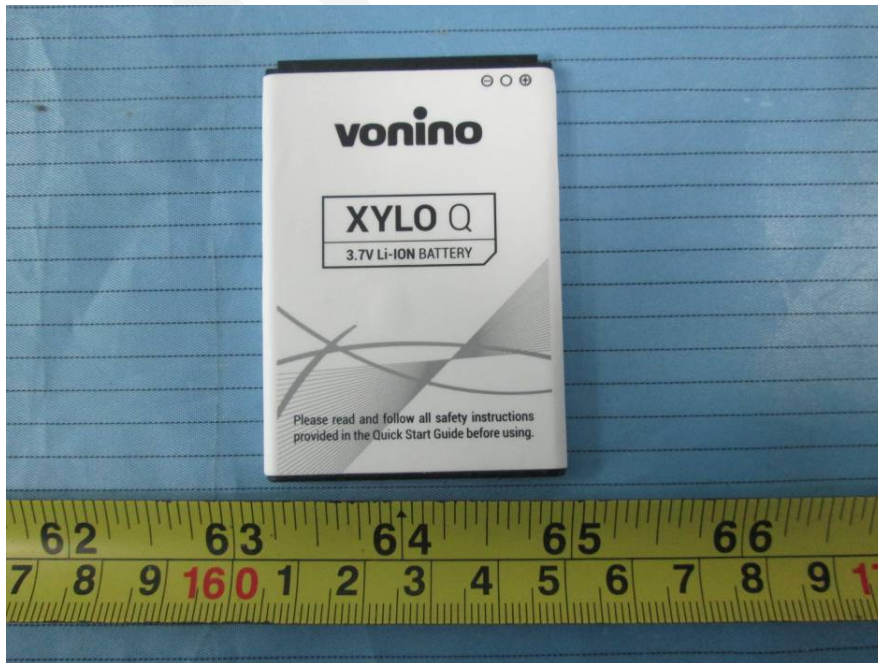
EUT – IC Chip View



EUT – Battery Top View

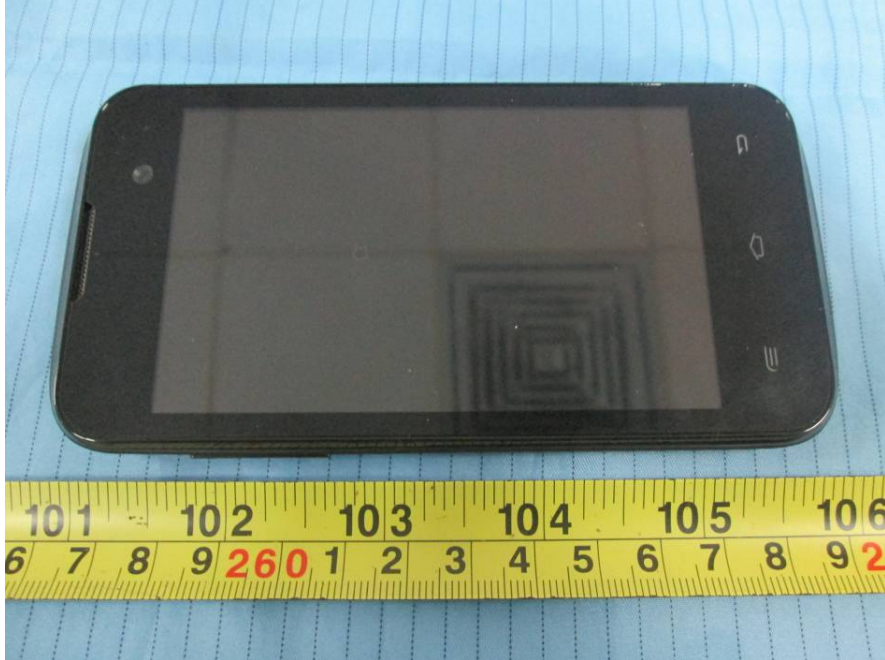


EUT – Battery Bottom View



Model: Xylo X

EUT – Front View



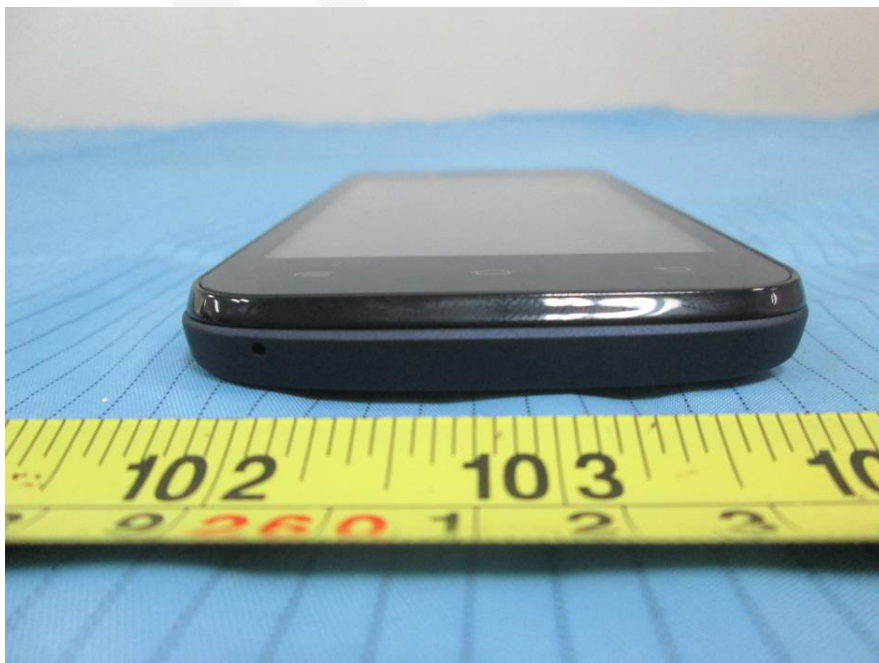
EUT – Rear View



EUT – Top View



EUT – Bottom View



EUT –Left Side View



EUT – Right Side View



EUT –Cover off View 1



EUT –Cover off View 2



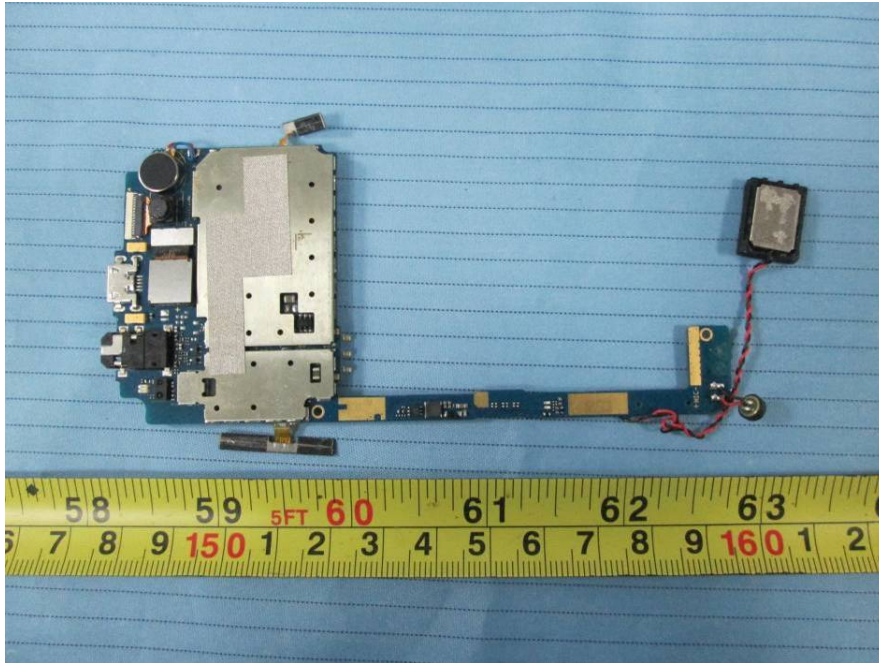
EUT –Cover off View 3



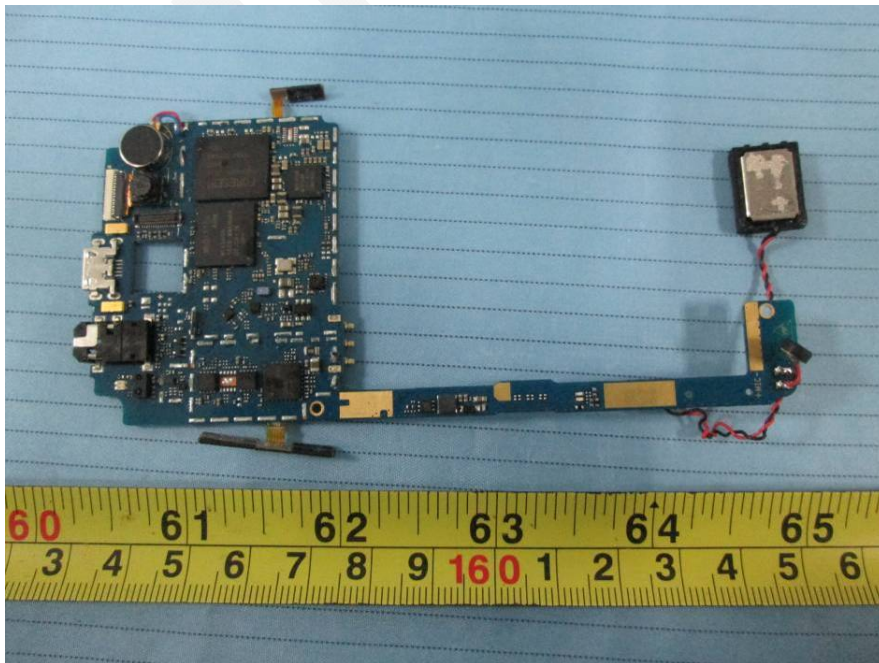
EUT –Cover off View 4



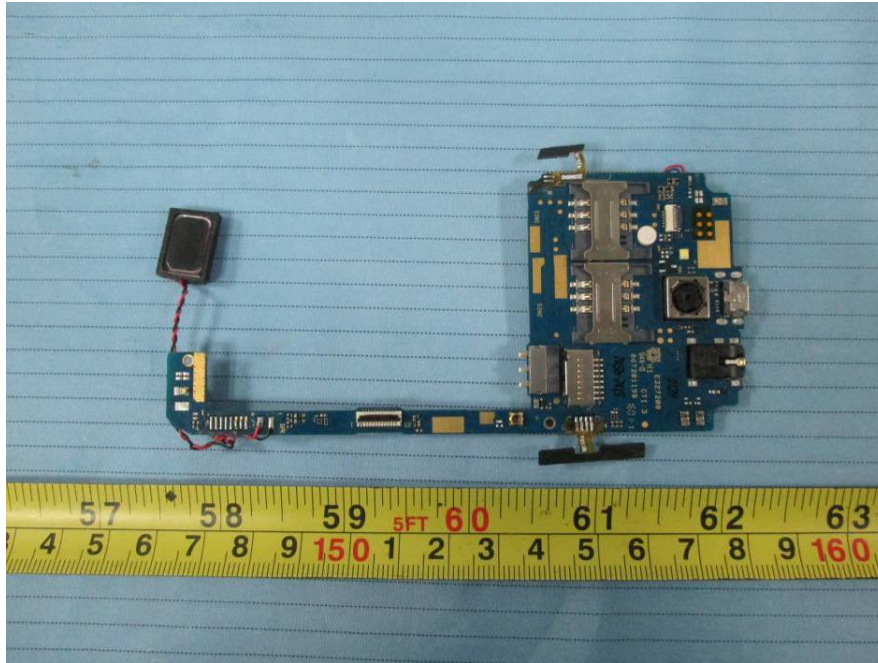
EUT – Main Board Top View



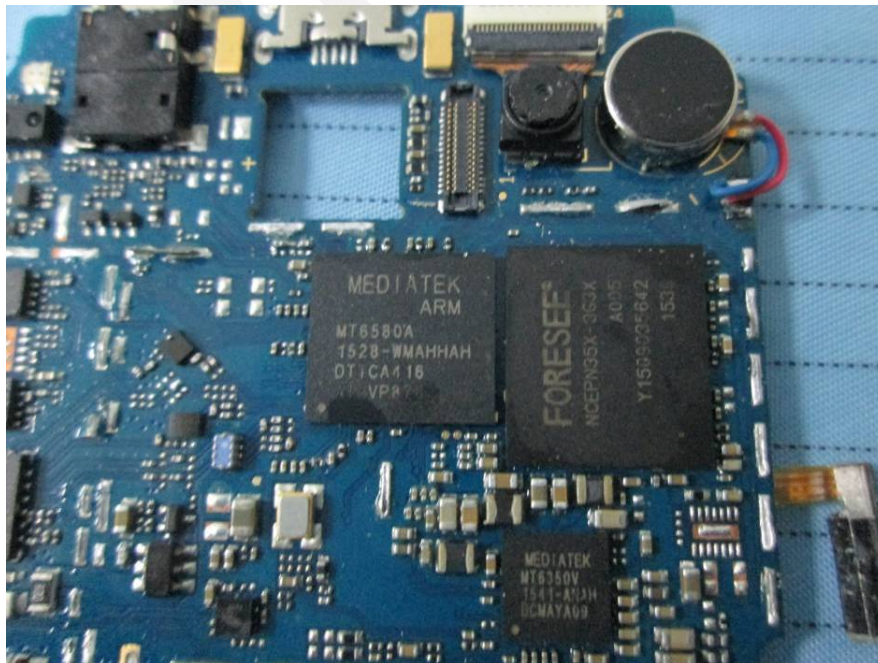
EUT – Main Board Top Shielding off View



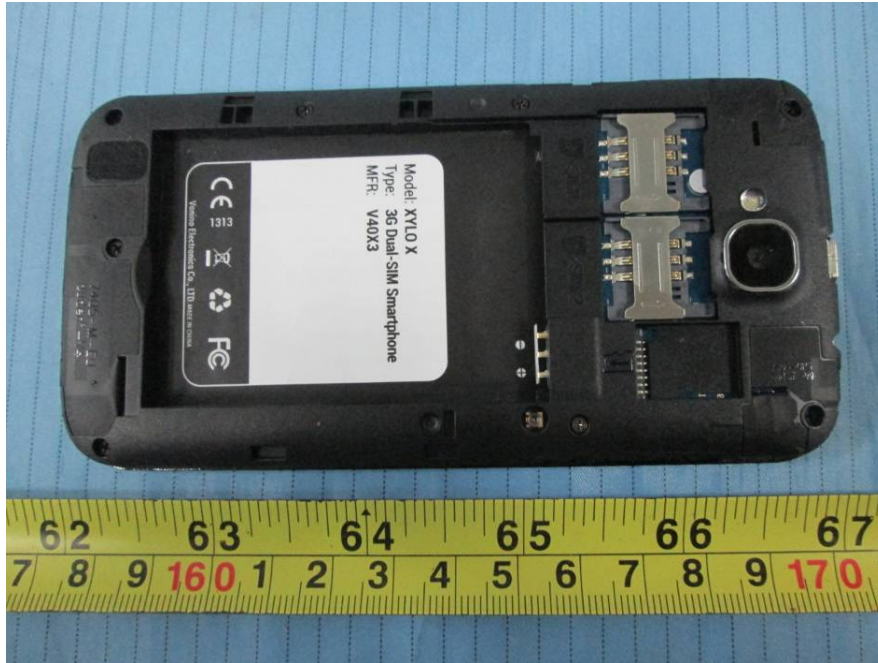
EUT – Main Board Bottom View



EUT – IC Chip View



EUT – Antenna View



EUT – Battery Top View



EUT – Battery Bottom View

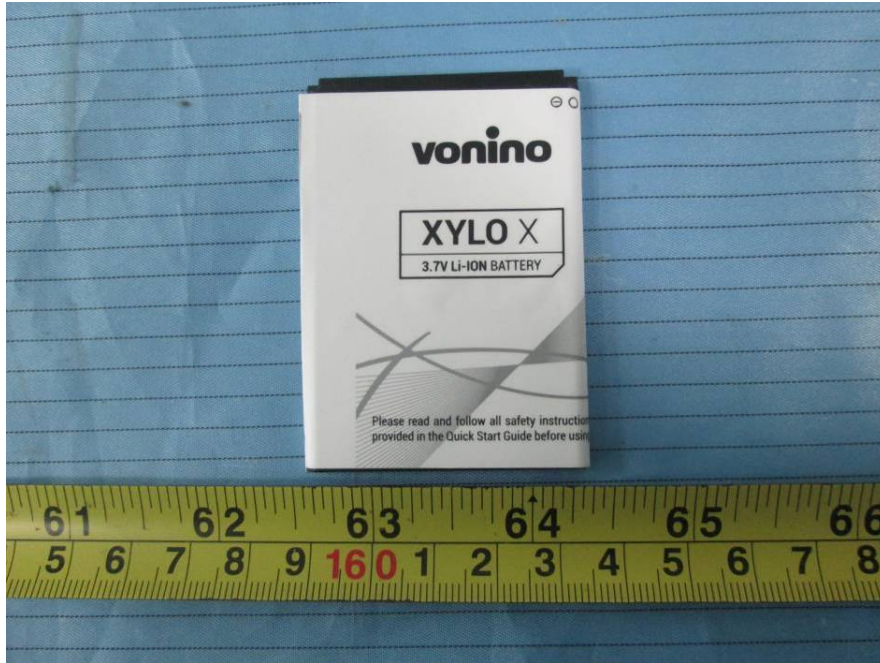


EXHIBIT C - TEST SETUP PHOTOGRAPHS

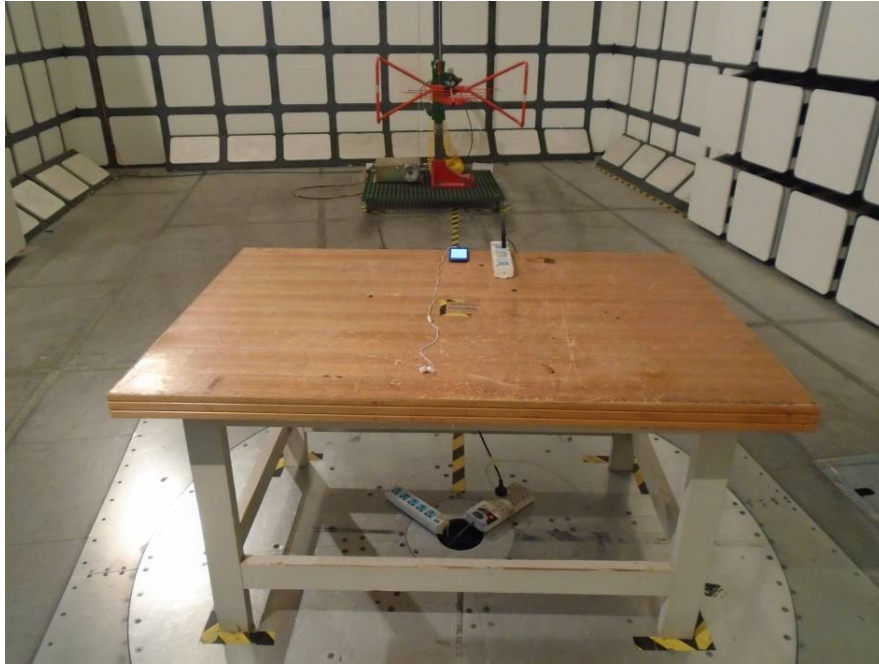
Conducted Disturbance - Front View



Conducted Disturbance - Side View



Radiated Disturbance - Front View (Below 1G, Charging & Playing)



Radiated Disturbance - Rear View (Below 1G, Charging & Playing)



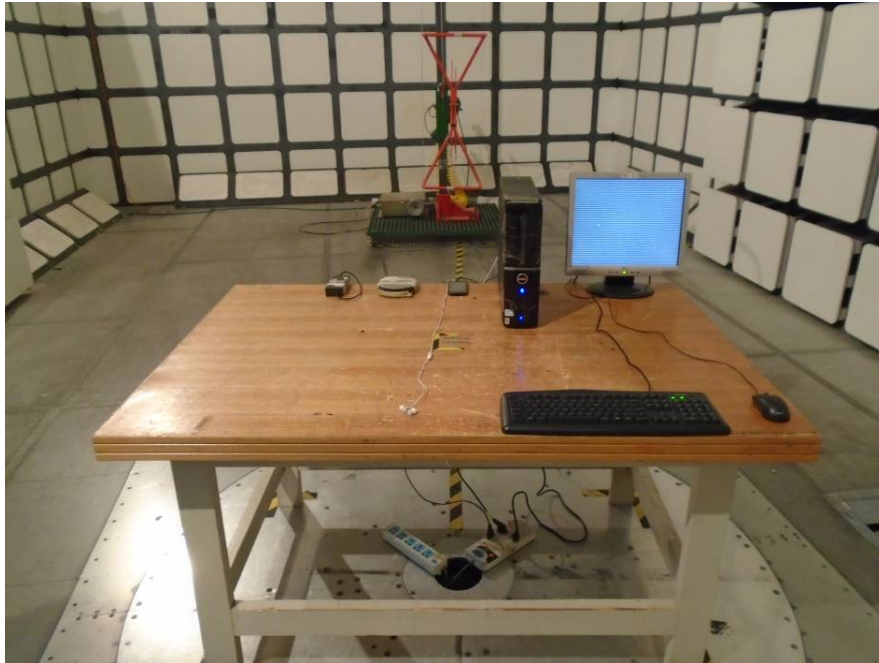
Radiated Disturbance - Front View (above 1G, Charging & Playing)



Radiated Disturbance - Rear View (above 1G, Charging & Playing)



Radiated Disturbance - Front View (Below 1G, Downloading)



Radiated Disturbance - Rear View (Below 1G, Downloading)



Radiated Disturbance - Front View (above 1G, Downloading)



Radiated Disturbance - Rear View (above 1G, Downloading)



PRODUCT SIMILARITY DECLARATION LETTER

Advanced Technologies SRL
Address: Ion Heliade Radulescu nr 26, Bucharest 071255, ROMANIA
Tel: +40 (21) 569 85 33/34 Fax: +40 (31) 814 61 12
E-mail: marius.chirca@advanced.ro

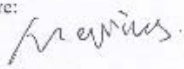
2016-3-30

Product Similarity Declaration

To Whom It May Concern,

We, Advanced Technologies SRL, hereby declare that we have a product named as Smartphone Xylo (Model number: Xylo Q) was tested by BACL. meanwhile, for our marketing purpose, we would like to list a series models (Xylo X) on reports and certificate, the difference of these models is the memory of flash, since the model Xylo Q is 512M and Xylo X is 1G. The pixels of camera are different since Xylo Q is equipped with 200W and Xylo X is equipped with 500W. No other changes are made to them.
We confirm that all information above is true, and we'll be responsible for all the consequences.
Please contact me if you have any question.

Signature:

Marius 
Purchasing Manager

***** END OF REPORT *****