

ETSI EN 301 908-1 V11.1.1 (2016-07)
ETSI EN 301 908-2 V11.1.1 (2016-07)

TEST REPORT

For

Vonino Electronics Limited

Miramar Tower 10F - no1010, 132 Nathan Road, Tsim Sha Tsui, Kowloon, Hong Kong

Model: Xavy G7

Report Type: Amended Report	Product Type: Tablet PC
Report Number:	RSZ170523002-22EA1
Report Date:	2017-06-08
Reviewed By:	RF Engineer
Prepared By:	Bay Area Compliance Laboratories Corp. (Shenzhen) 6/F., West Wing, Third Phase of Wanli Industrial Building, Shihua Road, Futian Free Trade Zone, Shenzhen, Guangdong, China Tel: +86-755-33320018 Fax: +86-755-33320008 www.baclcorp.com.cn

Note: This test report is prepared for the customer shown above and for the equipment described herein. It may not be duplicated or used in part without prior written consent from Bay Area Compliance Laboratories Corp. This report is valid only with a valid digital signature. The digital signature may be available only under the Adobe software above version 7.0.

TABLE OF CONTENTS

DOCUMENT REVISION HISTORY..... 3
BELOW IS THE REFERENCED REPORT 4

DRAFT

DOCUMENT REVISION HISTORY

Revision Number	Report Number	Description of Revision	Date of Issue
0	RSZ170417008-22E	Original Report	2017-05-02
1	RSZ170523002-22EA1	Amended Report	2017-06-08

Note:

This is an amended report application based on original report, the details as below:

1. Change the applicant to “Vonino Electronics Limited”.
2. Change the applicant address to “Miramar Tower 10F - no1010, 132 Nathan Road, Tsim Sha Tsui, Kowloon, Hong Kong”
3. Change the model to “Xavy G7”.
4. Change the trade name to “Vonino”.

Based on the above difference, it will affect nothing, so all the data and photos please refer to the original report.

BELOW IS THE REFERENCED REPORT



ETSI EN 301 908-1 V11.1.1 (2016-07)
ETSI EN 301 908-2 V11.1.1 (2016-07)

TEST REPORT

For

Shenzhen Adreamer Technology Co., Ltd

Building A2, Silicon Valley Dynamic Qinghu Garden, Dahe Rd., Longhua, Shenzhen, China

Tested Model: MK6952
Multiple Model: Xavy G7

Report Type: Original Report	Product Type: Tablet PC
Report Number: RSZ170417008-22E	
Report Date: 2017-05-02	
Reviewed By: RF Engineer	Simon Wang <i>Simon wang</i>
Prepared By:	Bay Area Compliance Laboratories Corp. (Shenzhen) 6/F., West Wing, Third Phase of Wanli Industrial Building, Shihua Road, Futian Free Trade Zone, Shenzhen, Guangdong, China Tel: +86-755-33320018 Fax: +86-755-33320008 www.baclcorp.com.cn

Note: This test report is prepared for the customer shown above and for the equipment described herein. It may not be duplicated or used in part without prior written consent from Bay Area Compliance Laboratories Corp. This report is valid only with a valid digital signature. The digital signature may be available only under the Adobe software above version 7.0.

TABLE OF CONTENTS

GENERAL INFORMATION 4

 PRODUCT DESCRIPTION FOR EQUIPMENT UNDER TEST (EUT) 4

 OBJECTIVE 4

 RELATED SUBMITTAL(S)/GRANT(S) 4

 TEST METHODOLOGY 4

 MEASUREMENT UNCERTAINTY 5

 TEST FACILITY 5

SYSTEM TEST CONFIGURATION 6

 DESCRIPTION OF TEST CONFIGURATION 6

 EUT EXERCISE SOFTWARE 6

 SPECIAL ACCESSORIES 6

 EQUIPMENT MODIFICATIONS 6

 SUPPORT EQUIPMENT LIST AND DETAILS 6

 EXTERNAL I/O CABLE 6

 BLOCK DIAGRAM OF TEST SETUP 7

SUMMARY OF TEST RESULTS 8

TEST EQUIPMENT LIST 9

ETSI EN 301 908-1 V11.1.1 (2016-07) §4.2.2 – RADIATED EMISSIONS (UE)..... 10

 APPLICABLE STANDARD 10

 TEST RESULTS SUMMARY 10

 TEST DATA 10

ETSI EN 301 908-1 V11.1.1 (2016-07) §4.2.4 – CONTROL AND MONITORING FUNCTIONS (UE) 13

 APPLICABLE STANDARD 13

 TEST PROCEDURE 13

 TEST DATA 14

ETSI EN 301 908-2 V11.1.1 (2016-07) §4.2.2 – TRANSMITTER MAXIMUM OUTPUT POWER..... 15

 APPLICABLE STANDARD 15

 TEST PROCEDURE 16

 TEST DATA 16

ETSI EN 301 908-2 V11.1.1 (2016-07) §4.2.3 – TRANSMITTER SPECTRUM EMISSION MASK 22

 APPLICABLE STANDARD 22

 LIMITS 22

 TEST PROCEDURE 22

 TEST DATA 22

ETSI EN 301 908-2 V11.1.1 (2016-07) §4.2.4 – TRANSMITTER SPURIOUS EMISSIONS 26

 APPLICABLE STANDARD 26

 TEST PROCEDURE 29

 TEST DATA 29

ETSI EN 301 908-2 V11.1.1 (2016-07) §4.2.5 – TRANSMITTER MINIMUM OUTPUT POWER 31

 APPLICABLE STANDARD 31

 TEST PROCEDURE 31

 TEST DATA 31

ETSI EN 301 908-2 V11.1.1 (2016-07) §4.2.6 – RECEIVER ADJACENT CHANNEL SELECTIVITY (ACS) 34

 APPLICABLE STANDARD 34

 TEST PROCEDURE 34

 TEST DATA 35

ETSI EN 301 908-2 V11.1.1 (2016-07) §4.2.7 – RECEIVER BLOCKING CHARACTERISTICS..... 36
 APPLICABLE STANDARD..... 36
 TEST PROCEDURE..... 38
 TEST DATA..... 38

ETSI EN 301 908-2 V11.1.1 (2016-07) §4.2.8 – RECEIVER SPURIOUS RESPONSE 40
 APPLICABLE STANDARD..... 40
 TEST PROCEDURE..... 40
 TEST DATA..... 41

ETSI EN 301 908-2 V11.1.1 (2016-07) §4.2.9 – RECEIVER INTERMODULATION CHARACTERISTICS..... 42
 APPLICABLE STANDARD..... 42
 TEST PROCEDURE..... 43
 TEST DATA..... 43

ETSI EN 301 908-2 V11.1.1 (2016-07) §4.2.10 – RECEIVER SPURIOUS EMISSIONS..... 44
 APPLICABLE STANDARD..... 44
 TEST PROCEDURE..... 45
 TEST DATA..... 45

ETSI EN 301 908-2 V11.1.1 (2016-07) §4.2.11 – OUT-OF-SYNCHRONIZATION HANDLING OF OUTPUT POWER 46
 APPLICABLE STANDARD..... 46
 TEST PROCEDURE..... 47

ETSI EN 301 908-2 V11.1.1 (2016-07) §4.2.12 – TRANSMITTER ADJACENT CHANNEL LEAKAGE POWER RATIO (ACLR)..... 48
 APPLICABLE STANDARD..... 48
 TEST PROCEDURE..... 48
 TEST DATA..... 48

ETSI EN 301 908-2 V11.1.1 (2016-07) §4.2.13 –RECEIVER REFERENCE SENSITIVITY LEVEL 51
 APPLICABLE STANDARD..... 51
 TEST PROCEDURE..... 51
 TEST DATA..... 52

EXHIBIT A - EUT PHOTOGRAPHS 53
 EUT – ALL VIEW 53
 EUT – FRONT VIEW 53
 EUT – REAR VIEW 54
 EUT – TOP VIEW 54
 EUT – BOTTOM VIEW 55
 EUT – LEFT VIEW 55
 EUT – RIGHT VIEW..... 56
 EUT – COVER OFF VIEW 1 56
 EUT – COVER OFF VIEW 2 57
 EUT – COVER OFF VIEW 3 57
 EUT – COVER OFF VIEW 4 58
 EUT – MAIN BOARD TOP VIEW 58
 EUT – MAIN BOARD TOP SHIELDING OFF VIEW 59
 EUT –MAIN BOARD BOTTOM VIEW 59
 EUT – IC CHIP VIEW 60
 EUT – ADAPTER VIEW..... 60
 EUT – ADAPTER LABEL VIEW 61
 EUT – BATTERY FRONT VIEW 61
 EUT – BATTERY REAR VIEW 62

EXHIBIT B - TEST SETUP PHOTOGRAPHS 63
 RADIATED SPURIOUS EMISSIONS TEST VIEW (BELOW 1GHZ) 63
 RADIATED SPURIOUS EMISSIONS TEST VIEW (ABOVE 1GHZ)..... 63

GENERAL INFORMATION

Product Description for Equipment under Test (EUT)

The *Shenzhen Adreamer Technology Co., Ltd's* product, model number: *MK6952* in this report is a *Tablet PC*, which was measured approximately: 186 mm (L) * 101mm (W) * 9.6mm (H), rated with input voltage: DC 3.7V from rechargeable li-ion battery or DC 5.0V from adapter.

Adapter information

Model: C2000

Input: AC 100-240V 50/60Hz 0.3A

Output: DC 5.0V, 2.0A

Notes: This series products model: Xavy G7 and MK6952 are identical; they have the same or similar appearance, structure, PCB, Material and function to the testing products, and only are different for model name. Model MK6952 was selected for fully testing, the detailed information can be referred to the attached declaration which was stated and guaranteed by the applicant.

** All measurement and test data in this report was gathered from production sample serial number: 1700688 (Assigned by BACL, Shenzhen).The EUT supplied by the applicant was received on 2017-04-17.*

Objective

This test report is prepared on behalf of *Shenzhen Adreamer Technology Co., Ltd* in accordance with ETSI EN 301 908-1 V11.1.1 (2016-07), Harmonised Standard covering the essential requirements of article 3.2 of the Directive 2014/53/EU; Part 1: Introduction and common requirements; and ETSI EN 301 908-2 V11.1.1 (2016-07) , IMT cellular networks, Harmonised Standard covering the essential requirements of article 3.2 of the Directive 2014/53/EU; Part 2: CDMA Direct Spread (UTRA FDD) User Equipment (UE).

The objective is to determine compliance with ETSI EN 301 908-1 V11.1.1 (2016-07) and ETSI EN 301 908-2 V11.1.1 (2016-07).

Related Submittal(s)/Grant(s)

No related submittal(s).

Test Methodology

All measurements contained in this report were conducted with ETSI EN 301 908-1 V11.1.1 (2016-07) and ETSI EN 301 908-2 V11.1.1 (2016-07).

Measurement Uncertainty

Item		Expanded Measurement uncertainty	
AC Power Line Conducted Emissions		2.20 dB (k=2, 95% level of confidence)	
Radiated emission	30MHz~200MHz	Horizontal	4.58 dB (k=2, 95% level of confidence)
		Vertical	4.59 dB (k=2, 95% level of confidence)
	200MHz~1 GHz	Horizontal	4.83 dB (k=2, 95% level of confidence)
		Vertical	5.85 dB (k=2, 95% level of confidence)
	1 GHz~6 GHz	Horizontal/Vertical	4.08 dB (k=2, 95% level of confidence)
Above 6 GHz	Horizontal/Vertical	4.59 dB (k=2, 95% level of confidence)	

Test Facility

The test site used by Bay Area Compliance Laboratories Corp. (Shenzhen) to collect test data is located on the 6/F., West Wing, Third Phase of Wanli Industrial Building, Shihua Road, Futian Free Trade Zone, Shenzhen, Guangdong, China.

Test site at Bay Area Compliance Laboratories Corp. (Shenzhen) has been fully described in reports submitted to the Federal Communication Commission (FCC). The details of these reports have been found to be in compliance with the requirements of Section 2.948 of the FCC Rules on October 31, 2013. The facility also complies with the radiated and AC line conducted test site criteria set forth in ANSI C63.4-2014.

The Federal Communications Commission has the reports on file and is listed under FCC Registration No.: 382179. The test site has been approved by the FCC for public use and is listed in the FCC Public Access Link (PAL) database.

SYSTEM TEST CONFIGURATION

Description of Test Configuration

The system was configured for testing according to ETSI EN 301 908-1 V11.1.1 (2016-07), ETSI EN 301 908-2 V11.1.1 (2016-07).

EUT Exercise Software

No exercise software.

Special Accessories

No special accessory.

Equipment Modifications

No modifications were made to the EUT.

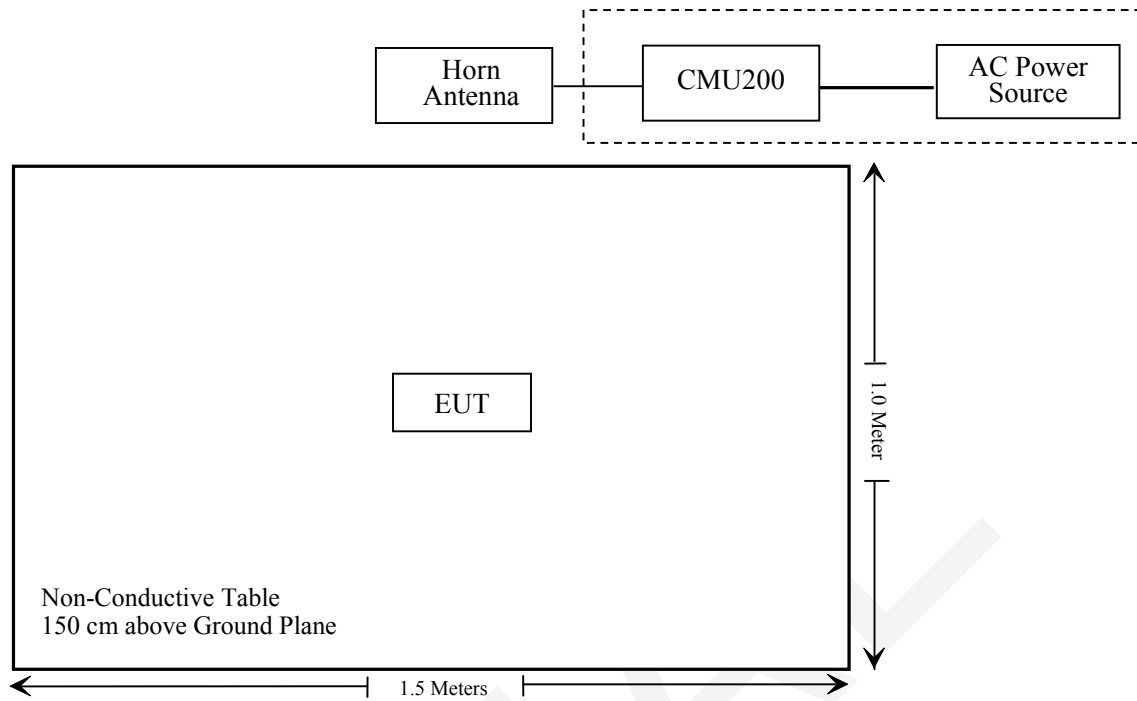
Support Equipment List and Details

Manufacturer	Description	Model	Serial Number
Rohde & Schwarz	Universal Radio Communication Tester	CMU200	106891

External I/O Cable

Cable Description	Length (m)	From Port	To
/	/	/	/

Block Diagram of Test Setup



SUMMARY OF TEST RESULTS

ETSI EN 301 908-1 V11.1.1	Description of Test	Test Result
§4.2.2	Radiated emissions (UE)	Compliance
§4.2.3	Radiated emissions (BS and repeater)	Not Applicable
§4.2.4	Control and monitoring functions (UE)	Compliance

ETSI EN 301 908-2 V11.1.1	Description of Test	Test Result
§4.2.2	Transmitter maximum output power	Compliance
§4.2.3	Transmitter spectrum emission mask	Compliance
§4.2.4	Transmitter spurious emissions	Compliance
§4.2.5	Transmitter minimum output power	Compliance
§4.2.6	Receiver Adjacent Channel Selectivity (ACS)	Compliance
§4.2.7	Receiver blocking characteristics	Compliance
§4.2.8	Receiver spurious response	Compliance
§4.2.9	Receiver intermodulation characteristics	Compliance
§4.2.10	Receiver spurious emissions	Compliance
§4.2.11	Out-of-synchronization handling of output power	Compliance
§4.2.12	Transmitter Adjacent Channel Leakage power Ratio (ACLR)	Compliance
§4.2.13	Receiver Reference Sensitivity level	Compliance

TEST EQUIPMENT LIST

Manufacturer	Description	Model	Serial Number	Calibration Date	Calibration Due Date
Radiated Emission Test					
Sunol Sciences	Horn Antenna	DRH-118	A052604	2014-12-29	2017-12-28
Sunol Sciences	Bi-log Antenna	JB1	A040904-2	2014-12-17	2017-12-16
BIZI	Signal Analyzer	FSEM	845987/005	2017-04-14	2018-04-14
Mini	Pre-amplifier	ZVA-183-S+	5969001149	2017-02-14	2018-02-14
HP	Amplifier	HP8447E	1937A01046	2016-11-12	2017-05-13
Anritsu	Signal Generator	68369B	004114	2016-12-05	2017-12-05
Rohde & Schwarz	EMI Test Receiver	ESCI	101120	2016-12-07	2017-12-07
COM POWER	Dipole Antenna	AD-100	041000	NCR	NCR
A.H. System	Horn Antenna	SAS-200/571	135	2015-08-18	2018-08-17
Rohde & Schwarz	Universal Radio Communication Tester	CMU200	106891	2016-10-18	2017-10-18
RF Conducted test					
R&S	SPECTRUM ANALYZER	FSU26	200120	2016-12-05	2017-12-05
Rohde & Schwarz	Universal Radio Communication Tester	CMU200	106891	2016-10-18	2017-10-18
ESPEC	Temperature & Humidity Chamber	EL-10KA	09107726	2016-11-22	2017-11-22
Long Wei	DC Power Supply	TPR-6420D	398363	NCR	NCR
Aglient	ESG Vector Signal Generator	E4438C	MY42080875	2016-05-09	2017-05-09

* **Statement of Traceability:** Bay Area Compliance Laboratories Corp. (Shenzhen) attests that all calibrations have been performed in accordance to requirements that traceable to National Primary Standards and International System of Units (SI).

ETSI EN 301 908-1 V11.1.1 (2016-07) §4.2.2 – RADIATED EMISSIONS (UE)

Applicable Standard

Limits

The frequency boundary and reference bandwidths for the detailed transitions of the limits between the requirements for out-of-band emissions and spurious emissions are based on Recommendations ITU-R SM.329-12 [1] and SM.1539-1 [i.6].

The requirements shown in table 4.2.2.2-1 are only applicable for frequencies in the spurious domain.

Table 4.2.2.2-1: Radiated spurious emissions requirements (UE)

Frequency	Minimum requirement (e.r.p.)/ reference bandwidth idle mode	Minimum requirement (e.r.p.)/ reference bandwidth traffic mode	Applicability
30 MHz ≤ f < 1 000 MHz	-57 dBm/100 kHz	-36 dBm/100 kHz	All
1 GHz ≤ f < 12,75 GHz	-47 dBm/1 MHz	-30 dBm/1 MHz	All
fc - 2,5 × 5 MHz < f < fc + 2,5 × 5 MHz		Not defined	UTRA FDD, UTRA TDD, 3,84 Mcps option, cdma2000, spreading rate 3
fc - 2,5 × BW _{Channel} MHz < f < fc + 2,5 × BW _{Channel} MHz		Not defined	E-UTRA FDD, E-UTRA TDD, Mobile WiMAX™
fc - 2,5 × 10 MHz < f < fc + 2,5 × 10 MHz		Not defined	UTRA TDD, 7,68 Mcps option
fc - 4 MHz < f < fc + 4 MHz		Not defined	UTRA TDD, 1,28 Mcps option cdma2000, spreading rate 1

NOTE: fc is the UE transmit centre frequency.

Test Results Summary

According to the recorded data in following table, the EUT complied with the ETSI EN 301 908-1 V11.1.1 (2016-07).

Test Data

Environmental Conditions

Temperature:	21 °C
Relative Humidity:	50 %
ATM Pressure:	101.0 kPa

The testing was performed by Dylan Li on 2017-04-22.

EUT operation mode: Transmitting

Test Result: Compliant. Please refer to following data tables.

WCDMA2100 (Pre-test with low, middle, high channel, the worst case as below)

Idle Mode

Frequency (MHz)	Receiver Reading (dB μ V)	Turntable Angle Degree	Rx Antenna		Substituted			Absolute Level (dBm)	EN 301 908-1	
			Height (m)	Polar (H/V)	SG Level (dBm)	Cable Loss (dB)	Antenna Gain (dB)		Limit (dBm)	Margin (dB)
216.31	31.24	272	1.7	H	-63.8	0.3	0.0	-64.1	-57	7.10
216.31	30.67	236	1.4	V	-64.3	0.3	0.0	-64.6	-57	7.60
1647.25	32.68	207	1.3	H	-66.0	1.40	8.90	-58.50	-47	11.50
1647.25	33.74	229	1.6	V	-65.5	1.40	8.90	-58.00	-47	11.00

Traffic Mode

Frequency (MHz)	Receiver Reading (dB μ V)	Turntable Angle Degree	Rx Antenna		Substituted			Absolute Level (dBm)	EN 301 908-1	
			Height (m)	Polar (H/V)	SG Level (dBm)	Cable Loss (dB)	Antenna Gain (dB)		Limit (dBm)	Margin (dB)
228.47	33.36	172	2.2	H	-61.6	0.3	0.0	-61.9	-36	25.9
228.47	32.49	148	1.3	V	-62.5	0.3	0.0	-62.8	-36	26.8
3900.00	39.27	114	1.2	H	-53.5	1.60	9.70	-45.40	-30	15.40
3900.00	39.73	243	2.4	V	-54.9	1.60	9.70	-46.80	-30	16.80

WCDMA900 (Pre-test with low, middle, high channel, the worst case as below)

Idle Mode

Frequency (MHz)	Receiver Reading (dBμV)	Turntable Angle Degree	Rx Antenna		Substituted			Absolute Level (dBm)	EN 301 908-1	
			Height (m)	Polar (H/V)	SG Level (dBm)	Cable Loss (dB)	Antenna Gain (dB)		Limit (dBm)	Margin (dB)
216.31	30.68	327	2.0	H	-64.3	0.3	0.0	-64.6	-57	7.60
216.31	29.34	200	2.4	V	-65.7	0.3	0.0	-66.0	-57	9.00
1647.25	33.02	21	1.1	H	-65.7	1.40	8.90	-58.20	-47	11.20
1647.25	33.47	135	2.3	V	-65.8	1.40	8.90	-58.30	-47	11.30

Traffic Mode

Frequency (MHz)	Receiver Reading (dBμV)	Turntable Angle Degree	Rx Antenna		Substituted			Absolute Level (dBm)	EN 301 908-1	
			Height (m)	Polar (H/V)	SG Level (dBm)	Cable Loss (dB)	Antenna Gain (dB)		Limit (dBm)	Margin (dB)
228.47	33.12	88	2.4	H	-61.9	0.3	0.0	-62.2	-36	26.2
228.47	32.48	114	1.1	V	-62.5	0.3	0.0	-62.8	-36	26.8
1795.20	40.58	124	1.8	H	-59.9	1.30	8.50	-52.70	-30	22.70
1795.20	43.51	256	1.0	V	-58.1	1.30	8.50	-50.90	-30	20.90
2692.80	44.24	293	1.5	H	-57.4	2.00	9.60	-49.80	-30	19.80
2692.80	39.68	225	2.1	V	-61.8	2.00	9.60	-54.20	-30	24.20
3590.40	35.24	318	2.1	H	-62.1	1.50	9.80	-53.80	-30	23.80
3590.40	35.89	26	1.9	V	-62.3	1.50	9.80	-54.00	-30	24.00

Note: 1) Absolute Level = SG Level - Cable Loss + Antenna Gain
2) Margin = Limit - Absolute Level

ETSI EN 301 908-1 V11.1.1 (2016-07) §4.2.4 – CONTROL AND MONITORING FUNCTIONS (UE)

Applicable Standard

This requirement, together with other control and monitoring technical requirements identified in the table of cross references in the applicable part, verifies that the control and monitoring functions of the UE prevent it from transmitting in the absence of a valid network.

This test is applicable to radio communications equipment and ancillary equipment in the operating band defined in the applicable part of this multi-part harmonised standard.

This test shall be performed on the radio communications equipment and/or a representative configuration of the ancillary equipment.

Limits

The maximum measured power during the duration of the test shall not exceed -30 dBm.

Test Procedure

a) At the start of the test, the UE shall be switched off. The UE antenna connector shall be connected to a power measuring equipment, with the following characteristics:

The RF bandwidth shall exceed the total operating transmit frequency range of the UE for operation with an applicable part;

The response time of the power measuring equipment shall be such that the measured power has reached within 1 dB of its steady state value within 100 μ s of a CW signal being applied;

It shall record the maximum power measured.

NOTE: The equipment may include a video low pass filter to minimize its response to transients or Gaussian noise peaks.

b) The UE shall be switched on for a period of approximately fifteen minutes, and then switched off.

c) The EUT shall remain switched off for a period of at least thirty seconds, and shall then be switched on for a period of approximately one minute.

d) The maximum power emitted from the UE throughout the duration of the test shall be recorded.

The results obtained shall be compared to the limits in clause 4.2.4.2 in order to prove compliance.

Test Data

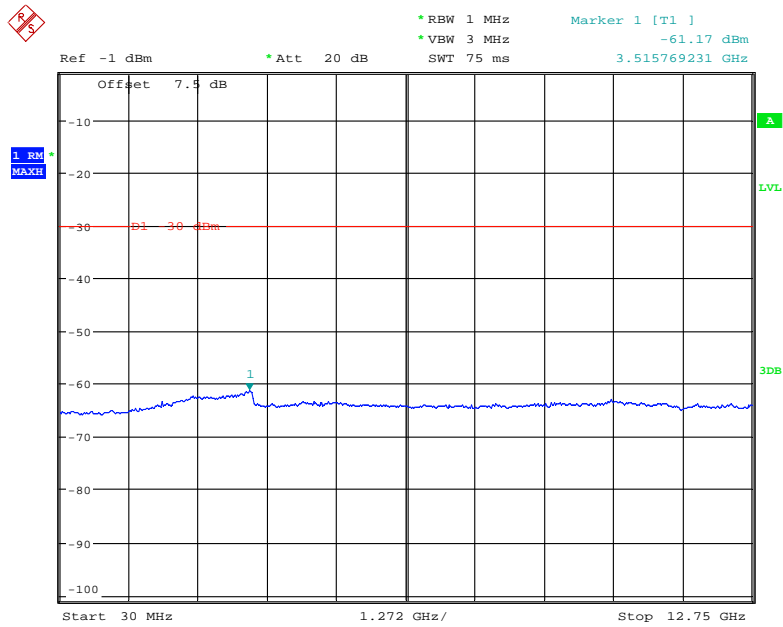
Environmental Conditions

Temperature:	22.6 °C
Relative Humidity:	51 %
ATM Pressure:	101.0 kPa

The testing was performed by Dylan Li on 2017-04-25.

EUT operation mode: Transmitting

Test Result: Compliant.



Date: 25.APR.2017 11:13:52

ETSI EN 301 908-2 V11.1.1 (2016-07) §4.2.2 – TRANSMITTER MAXIMUM OUTPUT POWER

Applicable Standard

The nominal maximum output power and its tolerance are defined according to the power class of the UE.

The nominal power defined is the broadband transmit power of the UE, i.e. the power in a bandwidth of at least $(1 + \alpha)$ times the chip rate of the radio access mode. The period of measurement shall be at least one timeslot.

Limits

The UE maximum output power shall be within the shown value in table 4.2.2.1.2-1 even for the multi-code DPDCH transmission mode.

Table 4.2.2.1.2-1: UE power classes

Operating Band	Power Class 3		Power Class 3bis		Power Class 4	
	Power (dBm)	Tol (dB)	Power (dBm)	Tol (dB)	Power (dBm)	Tol (dB)
Band I	+24	+1,7/-3,7			+21	+2,7/-2,7
Band III	+24	+1,7/-3,7			+21	+2,7/-2,7
Band VII	+24	+1,7/-3,7	+23	+2,7/-2,7	+21	+2,7/-2,7
Band VIII	+24	+1,7/-3,7	+23	+2,7/-2,7	+21	+2,7/-2,7
Band XV	+24	+1,7/-3,7	+23	+2,7/-2,7	+21	+2,7/-1,7
Band XVI	+24	+1,7/-3,7	+23	+2,7/-2,7	+21	+2,7/-1,7
Band XX	+24	+1,7/-3,7	+23	+2,7/-2,7	+21	+2,7/-2,7
Band XXII	+24	+1,7/-5,2	+23	+2,7/-4,2	+21	+2,7/-4,2

NOTE 1: These requirements do not take into account the maximum power reduction allowed to the UE in the presence of HS-DPCCH and E-DCH specified in ETSI TS 125 101 [4].

NOTE 2: The range of UE maximum output power for the various power classes are specified in ETSI TS 125 101 [4], clause 6.2.1. The values in table 4.2.2.1.2-1 correspond to the measurement limits taking into account the measurement uncertainty of measurement equipment (see clause 5.2).

Test Procedure

According to ETSI EN 301 908-2 V11.1.1 (2016-07) §5.3.1.

Test Data

Environmental Conditions

Temperature:	21 °C
Relative Humidity:	50 %
ATM Pressure:	101.0 kPa

The testing was performed by Dylan Li on 2017-04-22.

EUT operation mode: Transmitting

Test Result: Compliant, please refer to following data tables and plots.

Note:

L.V.: Low Voltage 3.5V_{DC}
 L.T.: Low Temperature -10°C
 N.V.: Normal Voltage 4.07V_{DC}
 N.T.: Normal Temperature +25°C
 H.V.: High Voltage 4.2V_{DC}
 H.T.: High Temperature +55°C
 Nominal Voltage 3.7 V_{DC}

WCDMA2100:

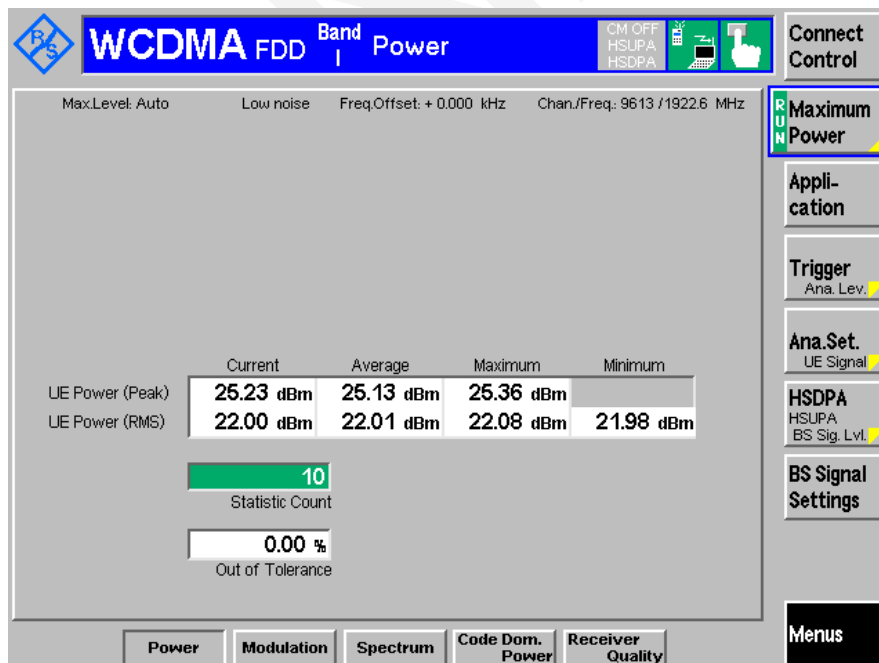
Rel 99:

Test Conditions		Transmitter maximum output power (dBm)			
Temperature	Voltage (V _{DC})	Low Channel	Middle Channel	High Channel	Result
Normal	Normal	22.01	21.95	22.01	Compliant
Low	Low	21.94	21.84	21.95	Compliant
Low	High	22.13	22.07	22.08	Compliant
High	Low	21.89	21.91	21.94	Compliant
High	High	22.12	22.06	22.10	Compliant

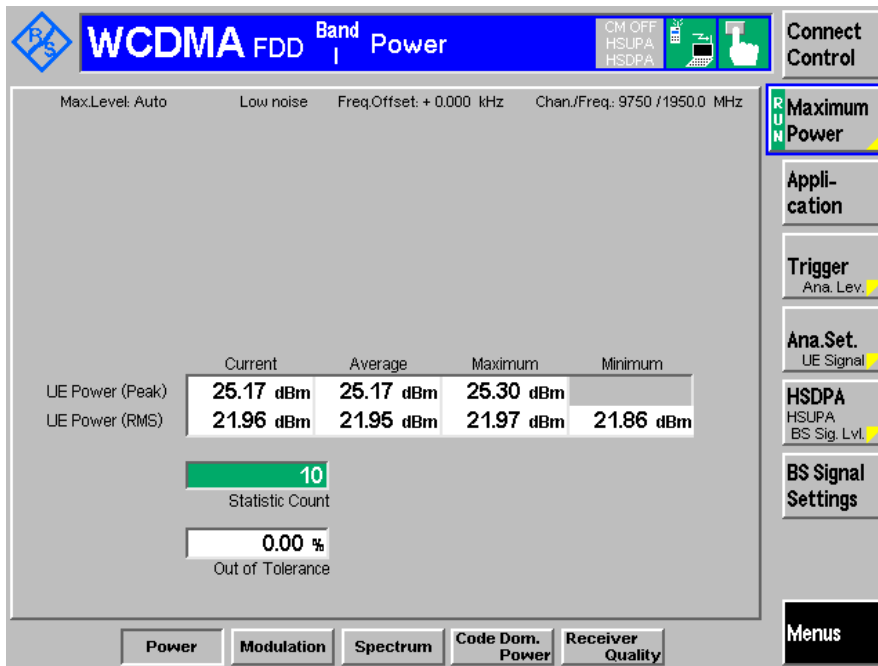
HSPA Mode:

Test Condition	Test Mode	3GPP Sub Test	Averaged Mean Power (dBm)		
			Low Frequency	Middle Frequency	High Frequency
Normal	HSDPA	1	20.86	20.84	20.99
		2	20.77	20.81	20.92
		3	20.90	20.93	21.06
		4	20.74	20.79	20.90
	HSUPA	1	20.95	20.90	20.99
		2	20.90	20.85	20.93
		3	21.06	21.00	21.08
		4	20.83	20.87	20.95
		5	21.01	20.95	21.02
	HSPA+	1	21.12	20.64	20.38

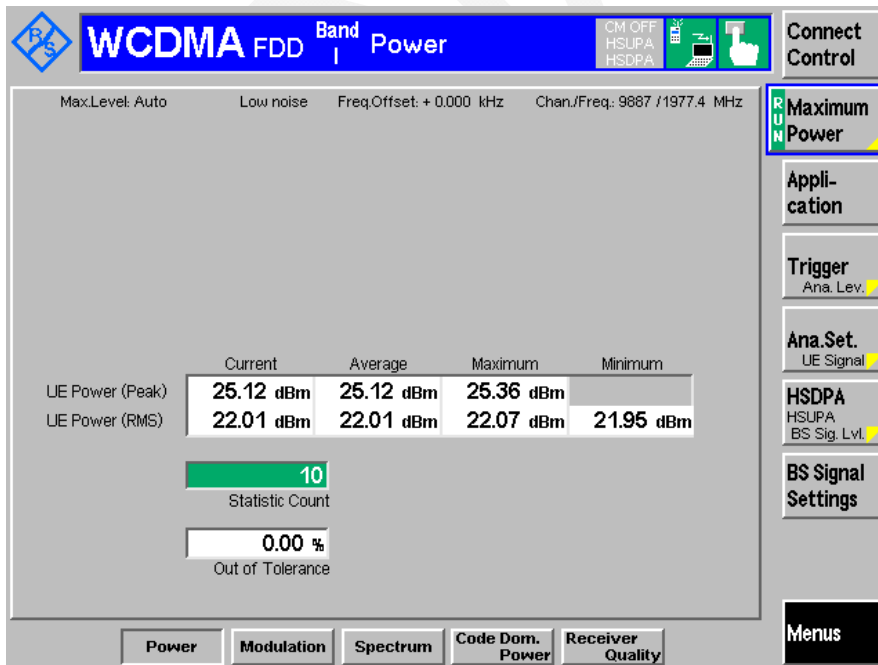
Normal Conditions, Low Channel



Normal Conditions, Middle Channel



Normal Conditions, High Channel



WCDMA 900:

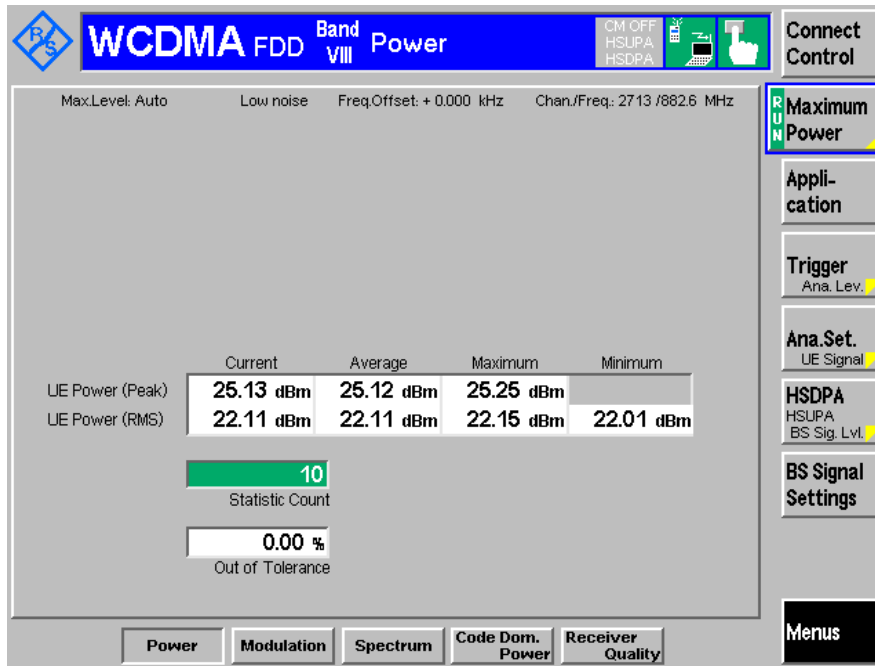
Rel 99:

Test Conditions		Transmitter maximum output power (dBm)			
Temperature	Voltage (V _{DC})	Low Channel	Middle Channel	High Channel	Result
Normal	Normal	22.11	22.10	22.16	Compliant
Low	Low	22.01	22.03	22.07	Compliant
Low	High	22.18	22.14	22.27	Compliant
High	Low	21.99	22.03	22.11	Compliant
High	High	22.22	22.14	22.28	Compliant

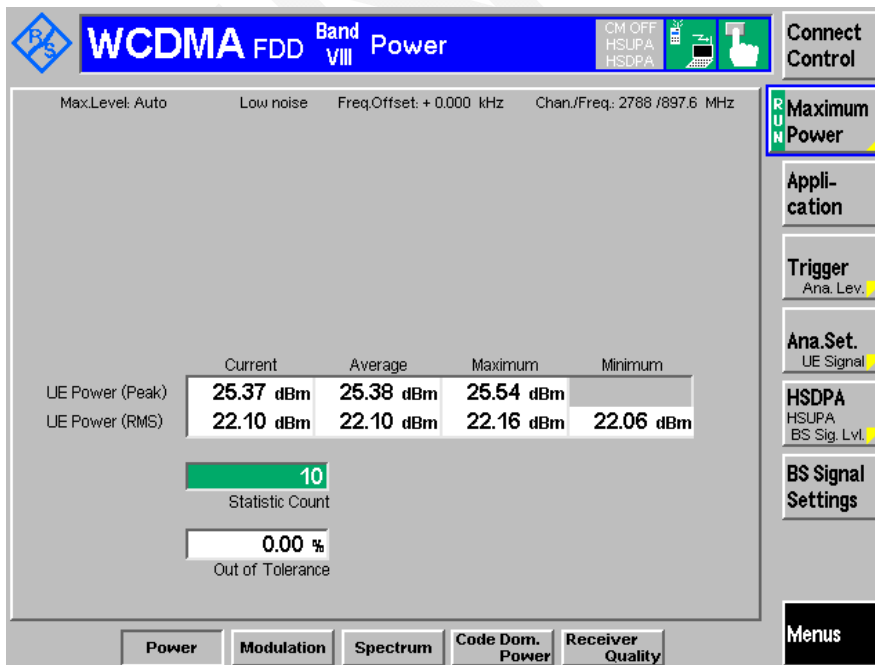
HSPA Mode:

Test Condition	Test Mode	3GPP Sub Test	Averaged Mean Power (dBm)		
			Low Frequency	Middle Frequency	High Frequency
Normal	HSDPA	1	21.04	21.06	20.99
		2	20.91	20.95	20.95
		3	21.16	21.10	21.10
		4	20.99	21.01	20.92
	HSUPA	1	20.96	21.03	21.00
		2	20.92	20.98	20.90
		3	21.00	21.14	21.03
		4	20.89	20.96	20.95
		5	21.08	21.09	21.11
	HSPA+	1	20.92	20.97	21.15

Normal Conditions, Low Channel



Normal Conditions, Middle Channel



Normal Conditions, High Channel

WCDMA FDD Band VIII Power

CM OFF HSUPA HSDPA

Max.Level: Auto Low noise Freq.Offset: + 0.000 kHz Chan./Freq: 2662 /912.4 MHz

	Current	Average	Maximum	Minimum
UE Power (Peak)	25.28 dBm	25.31 dBm	25.49 dBm	
UE Power (RMS)	22.15 dBm	22.16 dBm	22.18 dBm	21.96 dBm

Statistic Count: 10

Out of Tolerance: 0.00 %

Buttons: Connect Control, Maximum Power, Application, Trigger Ana. Lev., Ana.Set. UE Signal, HSDPA HSUPA BS Sig. Lvl., BS Signal Settings, Menus, Power, Modulation, Spectrum, Code Dom. Power, Receiver Quality

ETSI EN 301 908-2 V11.1.1 (2016-07) §4.2.3 – TRANSMITTER SPECTRUM EMISSION MASK

Applicable Standard

According to ETSI EN 301 908-2 V11.1.1 (2016-07) §4.2.3, The spectrum emission mask of the UE applies to frequencies, which are between 2,5 MHz and 12,5 MHz away from the UE centre carrier frequency. The out of channel emission is specified relative to the RRC filtered mean power of the UE carrier.

Limits

The power of any UE emission shall not exceed the levels specified in table 4.2.3.2-1. The requirements are applicable for all for the values of β_c , β_d , β_{hs} , β_{ec} and β_{ed} defined in TS 125 214 [7].

Table 4.2.3.1.2-1: Spectrum emission mask requirement

Δf in MHz (note 1)	Minimum requirement (note 2)		Measurement bandwidth (note 5)
	Relative requirement	Absolute requirement (in measurement bandwidth)	
2,5 MHz to 3,5 MHz	$\left\{ -33,5 - 15 \cdot \left(\frac{\Delta f}{MHz} - 2,5 \right) \right\} dBc$	-69,6 dBm	30 kHz (see note 3)
3,5 MHz to 7,5 MHz	$\left\{ -33,5 - 1 \cdot \left(\frac{\Delta f}{MHz} - 3,5 \right) \right\} dBc$	-54,3 dBm	1 MHz (see note 4)
7,5 MHz to 8,5 MHz	$\left\{ -37,5 - 10 \cdot \left(\frac{\Delta f}{MHz} - 7,5 \right) \right\} dBc$	-54,3 dBm	1 MHz (see note 4)
8,5 MHz to 12,5 MHz	-47,5 dBc	-54,3 dBm	1 MHz (see note 4)

NOTE 1: Δf is the separation between the carrier frequency and the centre of the measurement bandwidth.
 NOTE 2: The minimum requirement is calculated from the relative requirement or the absolute requirement, whichever is the higher power.
 NOTE 3: The first and last measurement position with a 30 kHz filter is at Δf equals to 2,515 MHz and 3,485 MHz.
 NOTE 4: The first and last measurement position with a 1 MHz filter is at Δf equals to 4 MHz and 12 MHz.
 NOTE 5: As a general rule, the resolution bandwidth of the measuring equipment should be equal to the measurement bandwidth. However, to improve measurement accuracy, sensitivity and efficiency, the resolution bandwidth may be smaller than the measurement bandwidth. When the resolution bandwidth is smaller than the measurement bandwidth, the result should be integrated over the measurement bandwidth in order to obtain the equivalent noise bandwidth of the measurement bandwidth.

Test Procedure

According to ETSI EN 301 908-2 V11.1.1 (2016-07) §5.3.2.

Test Data

Environmental Conditions

Temperature:	21 °C
Relative Humidity:	50 %
ATM Pressure:	101.0 kPa

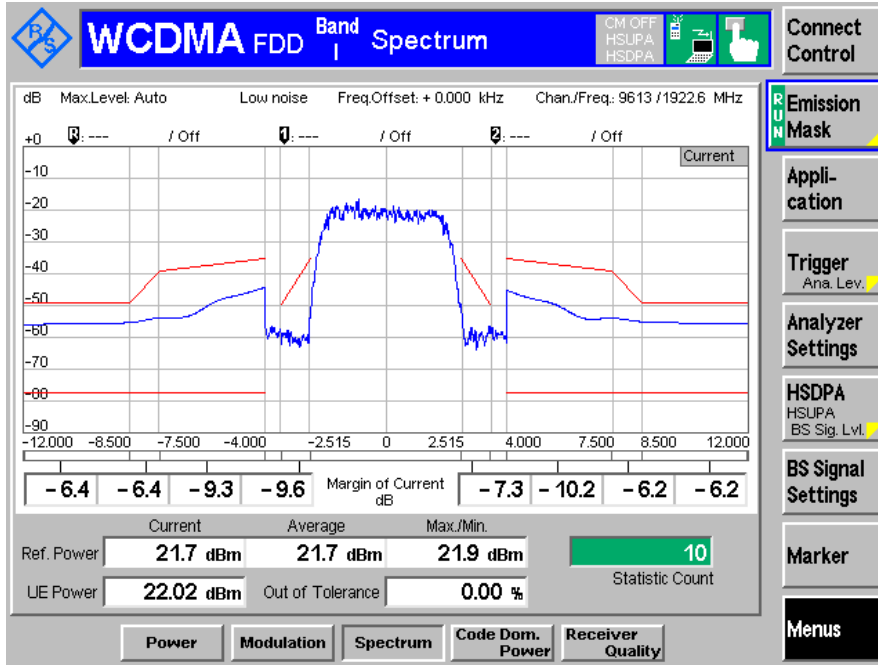
The testing was performed by Dylan Li on 2017-04-22.

EUT operation mode: Transmitting

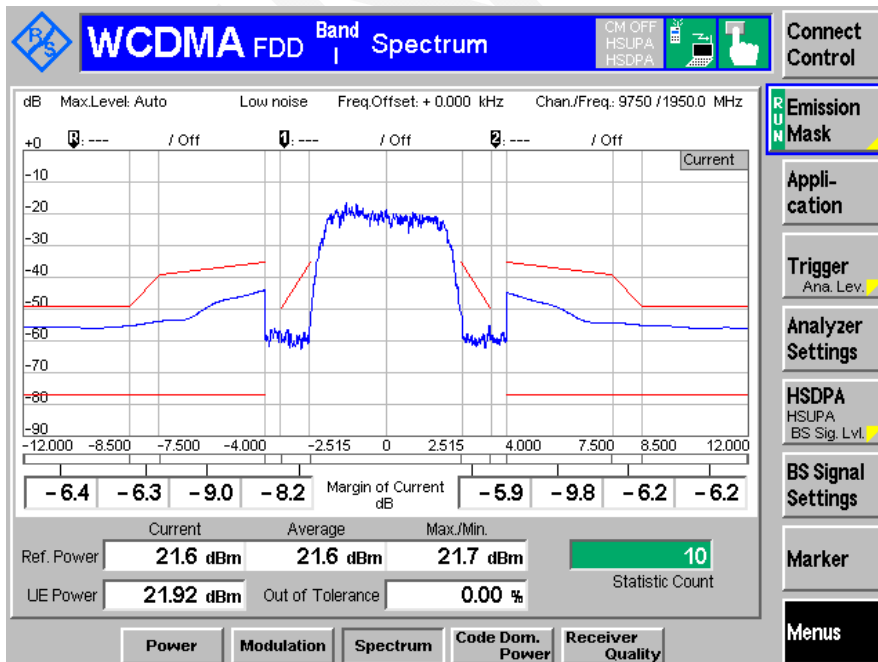
Test Result: Compliant. Please refer to following data plots.

WCDMA 2100

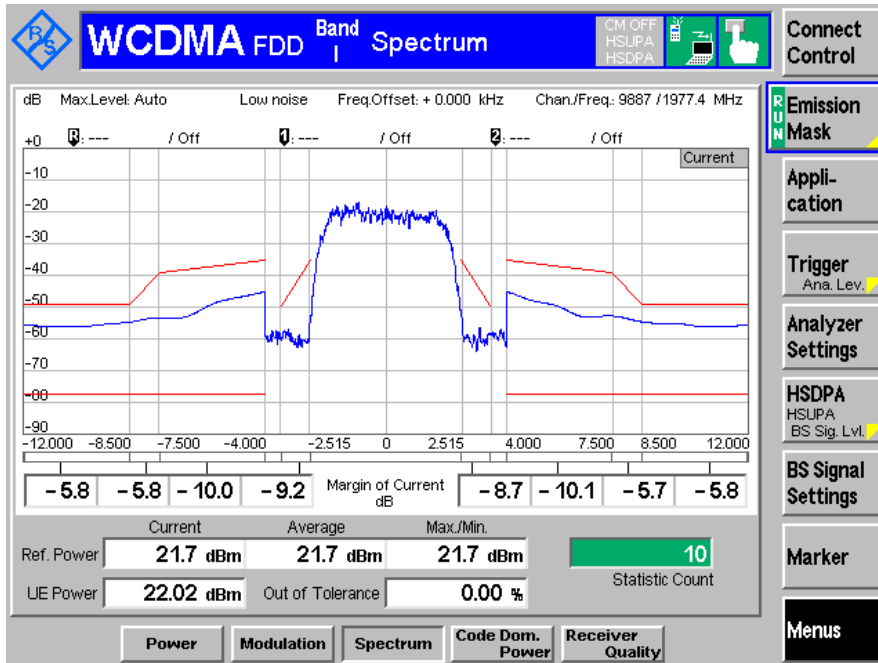
Low channel



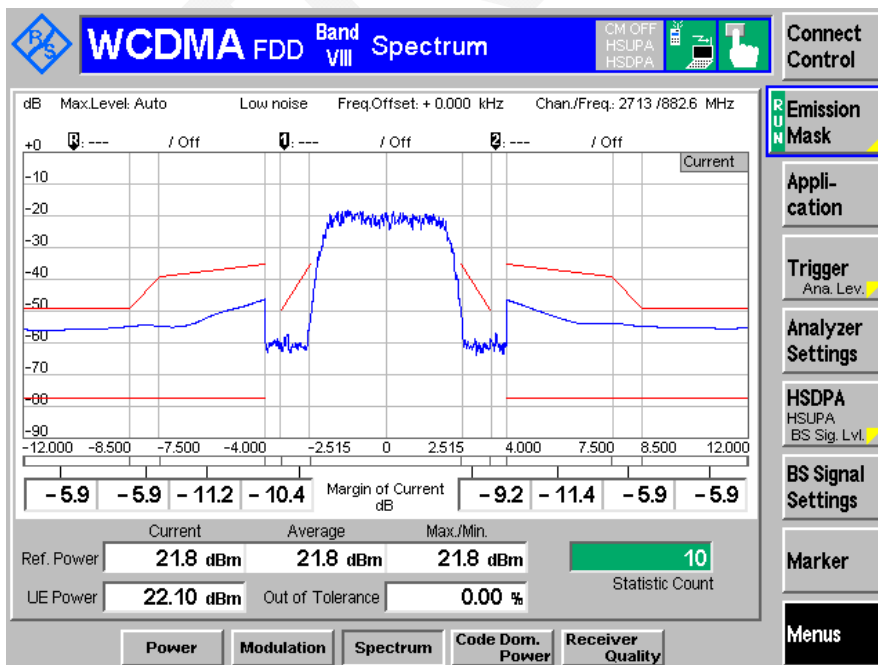
Middle channel



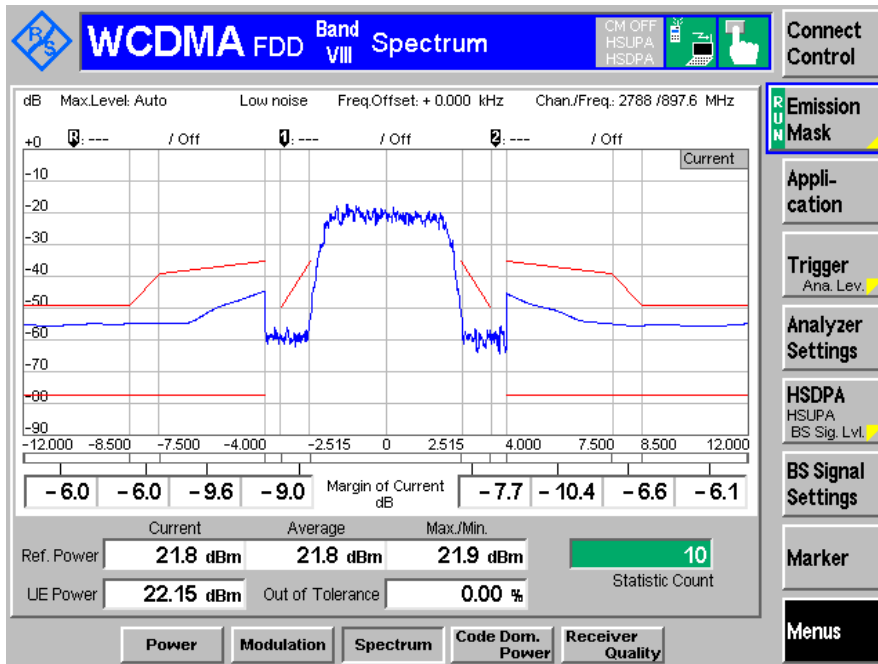
High channel



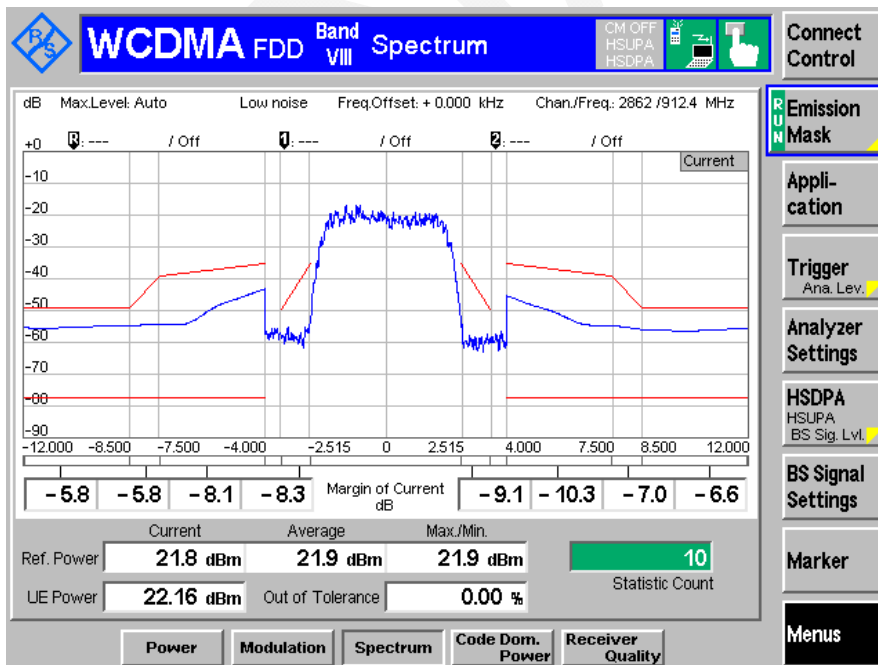
**WCDMA 900:
Low channel**



Middle channel



High channel



ETSI EN 301 908-2 V11.1.1 (2016-07) §4.2.4 – TRANSMITTER SPURIOUS EMISSIONS

Applicable Standard

According to ETSI EN 301 908-2 V11.1.1 (2016-07) §4.2.4, Spurious emissions are emissions, which are caused by unwanted transmitter effects such as harmonics emission, parasitic emission, intermodulation products and frequency conversion products, but exclude out-of-band emissions.

Limits

The power of spurious emissions shall not exceed the limits defined in tables 4.2.4.1.2-1 and 4.2.4.1.2-2. The limits shown in tables 4.2.4.1.2-1 and 4.2.4.1.2-2 are only applicable for frequencies, which are greater than 12,5 MHz away from the UE centre carrier frequency.

Table 4.2.4.1.2-1: General spurious emissions requirements

Frequency bandwidth	Measurement bandwidth	Minimum requirement
$9 \text{ kHz} \leq f < 150 \text{ kHz}$	1 kHz	-36 dBm
$150 \text{ kHz} \leq f < 30 \text{ MHz}$	10 kHz	-36 dBm
$30 \text{ MHz} \leq f < 1 \text{ 000 MHz}$	100 kHz	-36 dBm
$1 \text{ GHz} \leq f < 12,75 \text{ GHz}$	1 MHz	-30 dBm
$12,75 \text{ GHz} \leq f < 5^{\text{th}}$ harmonic of the upper frequency edge of the UL operating band in GHz	1 MHz	-30 dBm (note)

NOTE: Applies only for Band XXII.

Table 4.2.4.1.2-2: Additional spurious emissions requirements

Operating band	Frequency bandwidth	Measurement bandwidth	Minimum requirement
I	791 MHz ≤ f ≤ 821 MHz	3,84 MHz	-60 dBm
	921 MHz ≤ f < 925 MHz	100 kHz	-60 dBm (note 1)
	925 MHz ≤ f ≤ 935 MHz	100 kHz	-67 dBm (note 1)
	935 MHz < f ≤ 960 MHz	100 kHz	-79 dBm (note 1)
	1 805 MHz ≤ f ≤ 1 880 MHz	100 kHz	-71 dBm (note 1)
	2 110 MHz ≤ f ≤ 2 170 MHz	3,84 MHz	-60 dBm
	2 585 MHz ≤ f ≤ 2 690 MHz	3,84 MHz	-60 dBm
III	791 MHz ≤ f ≤ 821 MHz	3,84 MHz	-60 dBm
	921 MHz ≤ f < 925 MHz	100 kHz	-60 dBm (note 1)
	925 MHz ≤ f ≤ 935 MHz	100 kHz	-67 dBm (note 1)
	935 MHz < f ≤ 960 MHz	100 kHz	-79 dBm (note 1)
	1 805 MHz ≤ f ≤ 1 880 MHz	3,84 MHz	-60 dBm
	2 110 MHz ≤ f ≤ 2 170 MHz	3,84 MHz	-60 dBm
	2 585 MHz ≤ f ≤ 2 690 MHz	3,84 MHz	-60 dBm
VII	921 MHz ≤ f < 925 MHz	100 kHz	-60 dBm (note 1)
	925 MHz ≤ f ≤ 935 MHz	100 kHz	-67 dBm (note 1)
	935 MHz < f ≤ 960 MHz	100 kHz	-79 dBm (note 1)
	1 805 MHz ≤ f ≤ 1 880 MHz	100 kHz	-71 dBm (note 1)
	2 110 MHz ≤ f ≤ 2 170 MHz	3,84 MHz	-60 dBm
	2 620 MHz ≤ f ≤ 2 690 MHz	3,84 MHz	-60 dBm
	2 590 MHz ≤ f ≤ 2 620 MHz	3,84 MHz	-50 dBm
VIII	791 MHz ≤ f ≤ 821 MHz	3,84 MHz	-60 dBm
	925 MHz ≤ f ≤ 935 MHz	100 kHz	-67 dBm (note 1)
		3,84 MHz	-60 dBm
	935 MHz < f ≤ 960 MHz	100 kHz	-79 dBm (note 1)
		3,84 MHz	-60 dBm
	1 805 MHz < f ≤ 1 830 MHz	100 kHz	-71 dBm (notes 1 and 2)
		3,84 MHz	-60 dBm (note 2)
	1 830 MHz < f ≤ 1 880 MHz	100 kHz	-71 dBm (note 1)
3,84 MHz		-60 dBm	
2 110 MHz ≤ f ≤ 2 170 MHz	3,84 MHz	-60 dBm	
2 585 MHz ≤ f ≤ 2 640 MHz	3,84 MHz	-60 dBm	
2 640 MHz ≤ f ≤ 2 690 MHz	3,84 MHz	-60 dBm (note 2)	
XV	791 MHz ≤ f ≤ 821 MHz	3,84 MHz	-60 dBm
	921 MHz ≤ f ≤ 925 MHz	100 kHz	-60 dBm (note 1)
	925 MHz ≤ f ≤ 935 MHz	100 kHz	-67 dBm (note 1)
		3,84 MHz	-60 dBm
	935 MHz ≤ f ≤ 960 MHz	100 kHz	-79 dBm (note 1)
	1 805 MHz ≤ f ≤ 1 880 MHz	100 kHz	-71 dBm (note 1)
	2 110 MHz ≤ f ≤ 2 170 MHz	3,84 MHz	-60 dBm
	2 585 MHz ≤ f ≤ 2 620 MHz	3,84 MHz	-50 dBm
2 620 MHz ≤ f ≤ 2 690 MHz	3,84 MHz	-60 dBm	

Operating band	Frequency bandwidth	Measurement bandwidth	Minimum requirement
XVI	791 MHz ≤ f ≤ 821 MHz	3,84 MHz	-60 dBm
	921 MHz ≤ f ≤ 925 MHz	100 kHz	-60 dBm (note 1)
	925 MHz ≤ f ≤ 935 MHz	100 kHz	-67 dBm (note 1)
		3,84 MHz	-60 dBm
	935 MHz ≤ f ≤ 960 MHz	100 kHz	-79 dBm (note 1)
	1 805 MHz ≤ f ≤ 1 880 MHz	100 kHz	-71 dBm (note 1)
	2 110 MHz ≤ f ≤ 2 170 MHz	3,84 MHz	-60 dBm
	2 585 MHz ≤ f ≤ 2 620 MHz	3,84 MHz	-50 dBm
2 620 MHz ≤ f ≤ 2 690 MHz	3,84 MHz	-60 dBm	
XX	470 MHz ≤ f ≤ 790 MHz	8 MHz	-65 dBm (note 3)
	791 MHz ≤ f ≤ 821 MHz	3,84 MHz	-60 dBm
	921 MHz ≤ f ≤ 925 MHz	100 kHz	-60 dBm (note 1)
	925 MHz ≤ f ≤ 935 MHz	100 kHz	-67 dBm (note 1)
		3,84 MHz	-60 dBm
	935 MHz ≤ f ≤ 960 MHz	100 kHz	-79 dBm (note 1)
	1 805 MHz ≤ f ≤ 1 880 MHz	100 kHz	-71 dBm (note 1)
	2 110 MHz ≤ f ≤ 2 170 MHz	3,84 MHz	-60 dBm
2 585 MHz ≤ f ≤ 2 620 MHz	3,84 MHz	-50 dBm	
2 620 MHz ≤ f ≤ 2 690 MHz	3,84 MHz	-60 dBm	
XXII	791 MHz ≤ f ≤ 821 MHz	3,84 MHz	-60 dBm
	921 MHz ≤ f < 925 MHz	100 kHz	-60 dBm (note 1)
	925 MHz ≤ f ≤ 935 MHz	100 kHz	-67 dBm (note 1)
		3,84 MHz	-60 dBm
	935 MHz < f ≤ 960 MHz	100 kHz	-79 dBm (note 1)
	1 805 MHz ≤ f ≤ 1 880 MHz	100 kHz	-71 dBm (note 1)
	2 110 MHz ≤ f ≤ 2 170 MHz	3,84 MHz	-60 dBm
	2 585 MHz ≤ f ≤ 2 620 MHz	3,84 MHz	-50 dBm
	2 620 MHz ≤ f ≤ 2 690 MHz	3,84 MHz	-60 dBm
	3 510 MHz ≤ f ≤ 3 525 MHz	1 MHz	-40 dBm
3 525 MHz ≤ f ≤ 3 590 MHz	1 MHz	-50 dBm	
3 600 MHz ≤ f ≤ 3 800 MHz	3,84 MHz	-50 dBm	

NOTE 1: The transmitter additional spurious emission measurements are made on frequencies which are integer multiples of 200 kHz. As exceptions, up to five measurements with a level up to the applicable requirements defined in table 4.2.4.1.2-1 are permitted for each UARFCN used in the measurement.

NOTE 2: The transmitter additional spurious emission measurements are made on frequencies which are integer multiples of 200 kHz. As exceptions, measurements with a level up to the applicable requirements defined in table 4.2.4.1.2-1 are permitted for each UARFCN used in the measurement due to 2nd, 3rd and 4th harmonic spurious emissions.

NOTE 3: The conformance shall be assessed using the measurement position placed at the following centre frequencies: 474 MHz, 586 MHz, 690 MHz, 754 MHz, 770 MHz and 786 MHz.

Test Procedure

According to ETSI EN 301 908-2 V11.1.1 (2016-07) §5.3.3.

Test Data

Environmental Conditions

Temperature:	21 °C
Relative Humidity:	50 %
ATM Pressure:	101.0 kPa

The testing was performed by Dylan Li on 2017-04-22.

EUT operation mode: Transmitting

Test Result: Compliant, please refer to following tables.

WCDMA 2100(pre-test with Low/Middle/High channel and worst case is Middle channel):

Mode	Frequency Range (MHz)	Detector (Peak or Average)	RBW/VBW Setting (Hz)	Result Level (dBm)	Limit (dBm)	Margin (dB)	Result
WCDMA 2100	0.009-0.15	Average	1k/3k	-63.01	-36	27.01	Pass
	0.15-30	Average	10k/30k	-67.59	-36	31.59	Pass
	30-791	Average	100k/300k	-70.35	-36	34.35	Pass
	791-821	Average	3.84M	-66.14	-60	6.14	Pass
	821-921	Average	100k/300k	-64.59	-36	28.59	Pass
	921-925	Average	100k/300k	-67.86	-60	7.86	Pass
	925-935	Average	100k/300k	-70.26	-67	3.26	Pass
	935-960	Average	100k/300k	-82.64	-79	3.64	Pass
	960-1000	Average	100k/300k	-71.26	-36	35.26	Pass
	1000-1805	Average	1M/3M	-69.54	-30	39.54	Pass
	1805-1880	Average	100k/300k	-76.47	-71	5.47	Pass
	1880-1937.5	Average	1M/3M	-43.68	-30	13.68	Pass
	1962.5-2110	Average	1M/3M	-47.68	-30	17.68	Pass
	2110-2170	Average	3.84M	-71.49	-60	11.49	Pass
	2170-2585	Average	1M/3M	-61.24	-30	31.24	Pass
	2585-2690	Average	3.84M	-71.59	-60	11.59	Pass
2690-12750	Average	1M/3M	-64.84	-30	34.84	Pass	

WCDMA 900 (pretest with Low/Middle/High channel, the worst case is Middle channel):

Mode	Frequency Range (MHz)	Detector (Peak or Average)	RBW/VBW Setting (Hz)	Result Level (dBm)	Limit (dBm)	Margin (dB)	Result
WCDMA 900	0.009-0.15	Average	1k/3k	-62.14	-36	26.14	Pass
	0.15-30	Average	10k/30k	-71.68	-36	35.68	Pass
	30-791	Average	100k/300k	-74.16	-36	38.16	Pass
	791-821	Average	3.84M	-67.46	-60	7.46	Pass
	821-885.1	Average	100k/300k	-73.15	-36	37.15	Pass
	910.1-925	Average	100k/300k	-70.54	-36	34.54	Pass
	925-935	Average	100k/300k	-70.19	-67	3.19	Pass
		Average	3.84M	-66.25	-60	6.25	Pass
	935-960	Average	100k/300k	-82.46	-79	3.46	Pass
		Average	3.84M	-65.87	-60	5.87	Pass
	960-1000	Average	100k/300k	-66.48	-36	30.48	Pass
	1000-1805	Average	1M/3M	-41.68	-30	11.68	Pass
	1805-1830	Average	100k/300k	-80.15	-71	9.15	Pass
		Average	3.84M	-78.64	-60	18.64	Pass
	1830-1880	Average	100k/300k	-78.16	-71	7.16	Pass
		Average	3.84M	-75.13	-60	15.13	Pass
	1880-2110	Average	1M/3M	-67.14	-30	37.14	Pass
	2110-2170	Average	3.84M	-68.48	-60	8.48	Pass
	2170-2585	Average	1M/3M	-65.89	-30	35.89	Pass
	2585-2640	Average	3.84M	-67.49	-60	7.49	Pass
2640-2690	Average	3.84M	-66.97	-60	6.97	Pass	
2690-12750	Average	1M/3M	-60.23	-30	30.23	Pass	

ETSI EN 301 908-2 V11.1.1 (2016-07) §4.2.5 – TRANSMITTER MINIMUM OUTPUT POWER

Applicable Standard

The minimum controlled output power of the UE is when the power is set to a minimum value. This is when both the inner loop and open loop power control indicate a minimum transmit output power is required.

The minimum transmit power is defined as a mean power in one time slot.

Limits

The minimum output power shall be less than -49 dBm.

Test Procedure

According to ETSI EN 301 908-2 V11.1.1 (2016-07) §5.3.4.

Test Data

Environmental Conditions

Temperature:	21 °C
Relative Humidity:	50 %
ATM Pressure:	101.0 kPa

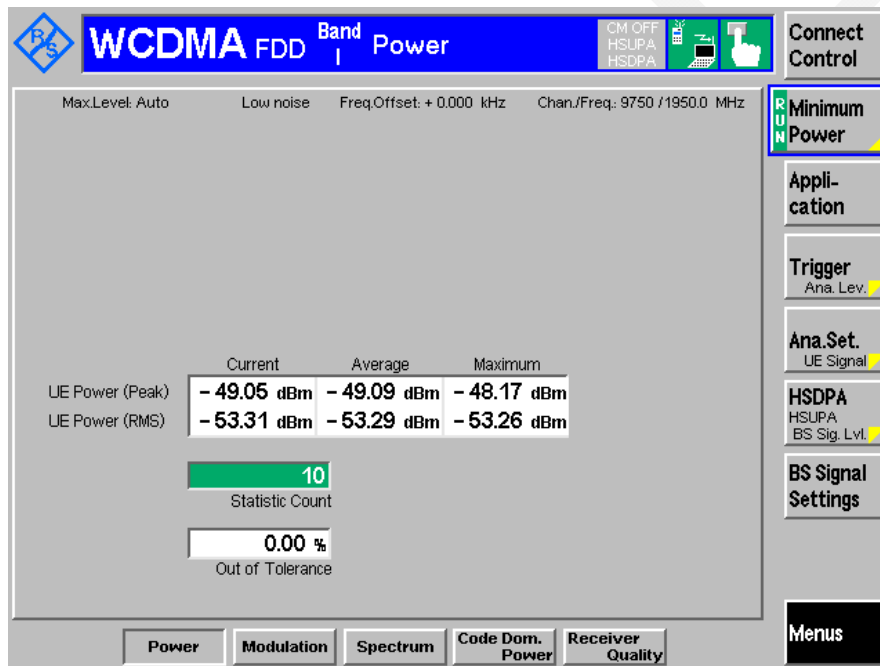
The testing was performed by Dylan Li on 2017-04-22.

EUT operation mode: Transmitting

WCDMA 2100:

Test Conditions		Transmitter minimum output power (dBm) Limit: -49dBm	
Temperature	Voltage (V)	Middle Channel	Result
Normal	Normal	-53.29	Compliant
Low	Low	-53.20	Compliant
Low	High	-53.33	Compliant
High	Low	-53.21	Compliant
High	High	-53.35	Compliant

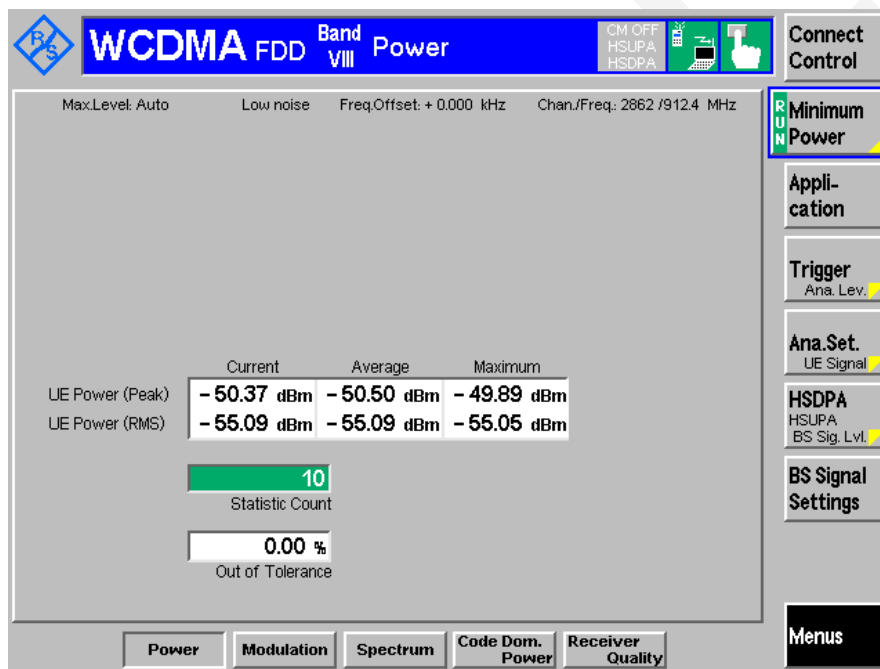
Normal Condition



WCDMA 900:

Test Conditions		Transmitter minimum output power (dBm) Limit: -49dBm	
Temperature	Voltage (V)	Middle Channel	Result
Normal	Normal	-55.09	Compliant
Low	Low	-55.01	Compliant
Low	High	-55.19	Compliant
High	Low	-55.17	Compliant
High	High	-55.02	Compliant

Normal Condition



ETSI EN 301 908-2 V11.1.1 (2016-07) §4.2.6 – RECEIVER ADJACENT CHANNEL SELECTIVITY (ACS)

Applicable Standard

According to ETSI EN 301 908-2 V11.1.1 (2016-07) §4.2.6, Adjacent Channel Selectivity (ACS) is a measure of a receiver's ability to receive a WCDMA signal at its assigned channel frequency in the presence of an adjacent channel signal at a given frequency offset from the centre frequency of the assigned channel. ACS is the ratio of the receive filter attenuation on the assigned channel frequency to the receive filter attenuation on the adjacent channel(s).

Limits

For the UE of power class 3 and 4, the BER shall not exceed 0,001 for the parameters specified in table 4.2.6.2-1. This test condition is equivalent to the ACS value 33 dB.

Table 4.2.6.2-1: Test parameters for adjacent channel selectivity

Parameter	Unit	Case 1	Case 2
DPCH_Ec	dBm/3,84 MHz	<REFSENS> + 14 dB	<REFSENS> + 41 dB
I _{or}	dBm/3,84 MHz	<REFI _{or} > + 14 dB	<REFI _{or} > + 41 dB
I _{oac} mean power (modulated)	dBm	-52	-25
F _{uw} (offset)	MHz	+5 or -5	+5 or -5
UE transmitted mean power	dBm	20 (for Power class 3) 18 (for Power class 4)	20 (for Power class 3) 18 (for Power class 4)
NOTE 1: <REFSENS> and <REFI _{or} > as specified in ETSI TS 134 121-1 [1].			
NOTE 2: The I _{oac} (modulated) signal consists of the common channels and the 16 dedicated data channels as specified in ETSI TS 125 101 [4].			

Test Procedure

- 1) Set the parameters of the interference signal generator as shown in table 4.2.6.2-1 case 1.
- 2) Set the power level of UE according to the table 4.2.6.2-1 case 1 with ± 1 dB tolerance.
- 3) Measure the BER of DCH received from the UE at the SS.
- 4) Set the parameters of the interference signal generator as shown in table 4.2.6.2-1 case 2.
- 5) Set the power level of UE according to the table 4.2.6.2-1 case 2 with ± 1 dB tolerance.
- 6) Measure the BER of DCH received from the UE at the SS.

Details of test method for UEs supporting UTRA FDD can be found in ETSI TS 134 121-1 [1], clauses 6.4 and 6.4A.

Test Data**Environmental Conditions**

Temperature:	21 °C
Relative Humidity:	50 %
ATM Pressure:	101.0 kPa

The testing was performed by Dylan Li on 2017-04-22.

EUT operation mode: Loopback

Test channel: Middle channel

Test condition: Normal

Test Result: Compliant.

WCDMA 2100:

The BER are 0.000%, in the case 1 interfering signal and case 2 interfering signal conditions. No errors were detected

WCDMA 900:

The BER are 0.000%, in the case 1 interfering signal and case 2 interfering signal conditions. No errors were detected

ETSI EN 301 908-2 V11.1.1 (2016-07) §4.2.7 – RECEIVER BLOCKING CHARACTERISTICS

Applicable Standard

According to ETSI EN 301 908-2 V11.1.1 (2016-07) §4.2.7, The blocking characteristic is a measure of the receiver's ability to receive a wanted signal at its assigned channel frequency in the presence of an unwanted interferer on frequencies other than those of the spurious response or the adjacent channels, without this unwanted input signal causing a degradation of the performance of the receiver beyond a specified limit. The blocking performance shall apply at all frequencies except those at which a spurious response occur.

Limits:

The BER shall not exceed 0,001 for the parameters specified in tables 4.2.7.2-1 and 4.2.7.2-2. For table 4.2.7.2-2 up to 24 exceptions are allowed for spurious response frequencies in each assigned frequency channel when measured using a 1 MHz step size.

Table 4.2.7.2-1: Test parameters for in-band blocking characteristics

Parameter	Unit	Level	
DPCH_Ec	dBm/3,84 MHz	<REFSENS> + 3 dB	
I _{or}	dBm/3,84 MHz	<REFI _{or} > + 3 dB	
I _{blocking} mean power (modulated)	dBm	-56 (for F _{uw} offset ±10 MHz)	-44 (for F _{uw} offset ±15 MHz)
F _{uw} (Band I operation)	MHz	2 102,4 ≤ f ≤ 2 177,6	2 095 ≤ f ≤ 2 185
F _{uw} (Band III operation)	MHz	1 797,4 ≤ f ≤ 1 887,6	1 790 ≤ f ≤ 1 895
F _{uw} (Band VII operation)	MHz	2 612,4 ≤ f ≤ 2 697,6	2 605 ≤ f ≤ 2 705
F _{uw} (Band VIII operation)	MHz	917,4 ≤ f ≤ 967,6	910 ≤ f ≤ 975
F _{uw} (Band XX operation)	MHz	783,4 ≤ f ≤ 828,6	776 ≤ f ≤ 836
F _{uw} (Band XXII operation)	MHz	3 502,4 ≤ f ≤ 3 597,6	3 495 ≤ f ≤ 3 605
UE transmitted mean power	dBm	20 (for Power class 3) 18 (for Power class 4) (note 3)	
NOTE 1: <REFSENS> and <REFI _{or} > as specified in ETSI TS 134 121-1 [1].			
NOTE 2: The I _{blocking} (modulated) signal consists of the common channels and the 16 dedicated data channels as specified in ETSI TS 125 101 [4].			
NOTE 3: The UE transmitted mean power shall be reduced by 0,5 dB for a UE operating in band XXII.			

Table 4.2.7.2-2: Test parameters for out-of-band blocking characteristics

Parameter	Unit	Frequency range 1	Frequency range 2	Frequency range 3
DPCH_Ec	dBm/3,84 MHz	<REFSENS> + 3 dB	<REFSENS> + 3 dB	<REFSENS> + 3 dB
I_{or}	dBm/3,84 MHz	<REF I_{or} > + 3 dB	<REF I_{or} > + 3 dB	<REF I_{or} > + 3 dB
$I_{blocking}$ (CW)	dBm	-44	-30	-15
F_{uw} (Band I operation)	MHz	2 050 < f < 2 095 2 185 < f < 2 230	2 025 < f ≤ 2 050 2 230 ≤ f < 2 255	1 < f ≤ 2 025 2 255 ≤ f < 12 750
F_{uw} (Band III operation)	MHz	1 745 < f < 1 790 1 895 < f < 1 940	1 720 < f ≤ 1 745 1 940 ≤ f < 1 965	1 < f ≤ 1 720 1 965 ≤ f < 12 750
F_{uw} (Band VII operation)	MHz	2 570 < f < 2 605 2 705 < f < 2 750	Na 2 750 ≤ f < 2 775	1 < f ≤ 2 570 2 775 ≤ f < 12 750
F_{uw} (Band VIII operation)	MHz	865 < f < 910 975 < f < 1 020	840 < f < 865 1 020 ≤ f < 1 045	1 < f ≤ 840 1 045 ≤ f < 12 750
F_{uw} (Band XV operation)	MHz	2 570 < f < 2 585 2 705 < f < 2 750	Na 2 750 ≤ f < 2 775	1 < f ≤ 2 570 2 775 ≤ f < 12 750
F_{uw} (Band XVI operation)	MHz	Na 2 705 < f < 2 750	2 500 < f ≤ 2 570 2 750 ≤ f < 2 775	1 < f ≤ 2 500 2 775 ≤ f < 12 750
F_{uw} (Band XX operation)	MHz	731 < f < 776 836 < f < 881	706 < f ≤ 731 881 ≤ f < 906	1 < f ≤ 706 906 ≤ f < 12 750
F_{uw} (Band XXII operation)	MHz	3 450 < f < 3 495 3 605 < f < 3 650	3 425 < f ≤ 3 450 3 650 ≤ f < 3 675	1 < f ≤ 3 425 3 675 ≤ f < 12 750
UE transmitted mean power	dBm	20 (for Power class 3) 18 (for Power class 4)		
Band I operation	For 2 095 MHz ≤ f ≤ 2 185 MHz, the appropriate in-band blocking or adjacent channel selectivity in clause 4.2.6 and table 4.2.7.2-1 shall be applied.			

Parameter	Unit	Frequency range 1	Frequency range 2	Frequency range 3
Band III operation	For 1 790 MHz ≤ f ≤ 1 895 MHz, the appropriate in-band blocking or adjacent channel selectivity in clause 4.2.6 and table 4.2.7.2-1 shall be applied.			
Band VII operation	For 2 605 MHz ≤ f ≤ 2 705 MHz, the appropriate in-band blocking or adjacent channel selectivity in clause 4.2.6 and table 4.2.7.2-1 shall be applied.			
Band VIII operation	For 910 MHz ≤ f ≤ 975 MHz, the appropriate in-band blocking or adjacent channel selectivity in clause 4.2.6 and table 4.2.7.2-1 shall be applied.			
Band XV operation	For 2 585 MHz ≤ f ≤ 2 705 MHz, the appropriate in-band blocking or adjacent channel selectivity in clause 4.2.6 and table 4.2.7.2-1 shall be applied.			
Band XVI operation	For 2 570 MHz ≤ f ≤ 2 705 MHz, the appropriate in-band blocking or adjacent channel selectivity in clause 4.2.6 and table 4.2.7.2-1 shall be applied.			
Band XX operation	For 776 MHz ≤ f ≤ 836 MHz, the appropriate in-band blocking or adjacent channel selectivity in clause 4.2.6 and table 4.2.7.2-1 shall be applied.			
Band XXII operation	For 3 495 ≤ f ≤ 3 605 MHz, the appropriate in-band blocking or adjacent channel selectivity in clause 4.2.6 and clause 4.2.7.2-1 shall be applied. (note 2)			
NOTE 1: <REFSENS> and <REF I_{or} > as specified in ETSI TS 134 121-1 [1].				
NOTE 2: The UE transmitted mean power shall be reduced by 0,5 dB for a UE operating in band XXII.				

Table 4.2.7.2-3: Test parameters for narrow band blocking

Parameter	Unit	Band III, VIII
DPCH Ec	dBm/3,84 MHz	<REFSENS> + 10 dB
I _{or}	dBm/3,84 MHz	<REFI _{or} > + 10 dB
I _{blocking} (GMSK)	dBm	-56
F _{uw} (offset)	MHz	2,8
UE transmitted mean power	dBm	20 (for Power class 3) 18 (for Power class 4)
NOTE 1: <REFSENS> and <REFI _{or} > as specified in ETSI TS 134 121-1 [1].		
NOTE 2: I _{blocking} (GMSK) is an interfering signal as defined in ETSI TS 145 004 [8]. It is a continuous GMSK modulated carrier following the structure of the GSM signals, but with all modulating bits (including the midamble period) derived directly from a random or any pseudo random data stream.		

Test Procedure

- 1) Set the parameters of the CW generator or the interference signal generator as shown in tables 4.2.7.2-1, 4.2.7.2-2 and 4.2.7.2-3. For table 4.2.7.2-2 the frequency step size is 1 MHz.
- 2) Set the power level of the UE according to tables 4.2.7.2-1, 4.2.7.2-2 and 4.2.7.2-3 with a ± 1 dB tolerance.
- 3) Measure the BER of DCH received from the UE at the SS.
- 4) For table 4.2.7.2-2, record the frequencies for which the BER exceeds the test requirements.

Details of test method for UEs supporting UTRA FDD can be found in ETSI TS 134 121-1 [1], clause 6.5.

Test Data

Environmental Conditions

Temperature:	21 °C
Relative Humidity:	50 %
ATM Pressure:	101.0 kPa

The testing was performed by Dylan Li on 2017-04-22.

EUT operation mode: Loopback

Test channel: Middle channel

Test condition: Normal

Test Result: Compliance.

Please refer to following data tables.

WCDMA 2100:

Frequency Range	Interfering Frequency (MHz)	Interfering Level (dBm)	BER
Frequency Range 1	2050	-44	0.0001
	2070	-44	0.0000
	2095	-44	0.0000
	2185	-44	0.0000
	2210	-44	0.0000
	2230	-44	0.0000
Frequency Range 2	2025	-30	0.0000
	2030	-30	0.0000
	2050	-30	0.0000
	2230	-30	0.0000
	2240	-30	0.0001
	2255	-30	0.0000
Frequency Range 3	2255	-15	0.0000
	2620	-15	0.0000
	2650	-15	0.0000
	2690	-15	0.0000
	12750	-15	0.0000

WCDMA 900:

Frequency Range	Interfering Frequency (MHz)	Interfering Level (dBm)	BER
Frequency Range 1	890	-44	0.0000
	990	-44	0.0000
Frequency Range 2	850	-30	0.0000
	1030	-30	0.0000
Frequency Range 3	820	-15	0.0001
	1045	-15	0.0001
	12745	-15	0.0000

ETSI EN 301 908-2 V11.1.1 (2016-07) §4.2.8 – RECEIVER SPURIOUS RESPONSE**Applicable Standard**

According to ETSI EN 301 908-2 V11.1.1 (2016-07) §4.2.8, Spurious response is a measure of the receiver's ability to receive a wanted signal on its assigned channel frequency without exceeding a given degradation due to the presence of an unwanted CW interfering signal at any other frequency at which a response is obtained i.e. for which the out-of-band blocking limit as specified in table 4.2.7.2-2 is not met.

Limits

The BER shall not exceed 0,001 for the parameters specified in table 4.2.8.2-1.

Table 4.2.8.2-1: Test parameters for spurious response

Parameter	Level	Unit
DPCH_Ec	<REFSENS> + 3 dB	dBm/3,84 MHz
\hat{I}_{or}	<REF \hat{I}_{or} > + 3 dB	dBm/3,84 MHz
I _{blocking} (CW)	-44	dBm
F _{uw}	Spurious response frequencies	MHz
UE transmitted mean power	20 (for Power class 3) 18 (for Power class 4) (note 2)	dBm
NOTE 1: <REFSENS> and <REF \hat{I}_{or} > as specified in ETSI TS 134 121-1 [1].		
NOTE 2: The UE transmitted mean power shall be reduced by 0,5 dB, for a UE operating in band XXII.		

Test Procedure

- 1) Set the parameter of the CW generator as shown in table 4.2.8.2-1. The spurious response frequencies are determined in step 4) of clause 5.3.6.1.2.
- 2) Set the power level of the UE according to table 4.2.8.2-1 with a ± 1 dB tolerance.
- 3) Measure the BER of DCH received from the UE at the SS.

Details of test method for UEs supporting UTRA FDD can be found in ETSI TS 134 121-1 [1], clause 6.6.

Test Data**Environmental Conditions**

Temperature:	21 °C
Relative Humidity:	50%
ATM Pressure:	101.0 kPa

The testing was performed by Dylan Li on 2017-04-22.

EUT operation mode: Loopback

Test channel: Middle channel

Test condition: Normal

Test Result: Compliant.

WCDMA 2100:

The BER are 0.000%, for the parameters specified in table 4.2.8.2-1. No errors were detected in the presence.

WCDMA 900:

The BER are 0.000%, for the parameters specified in table 4.2.8.2-1. No errors were detected in the presence.

ETSI EN 301 908-2 V11.1.1 (2016-07) §4.2.9 – RECEIVER INTERMODULATION CHARACTERISTICS

Applicable Standard

According to ETSI EN 301 908-2 V11.1.1 (2016-07) §4.2.9, Third and higher order mixing of the two interfering RF signals can produce an interfering signal in the band of the desired channel. Intermodulation response rejection is a measure of the capability of the receiver to receiver a wanted signal on its assigned channel frequency in the presence of two or more interfering signals which have a specific frequency relationship to the wanted signal.

Limits

The BER shall not exceed 0,001 for the parameters specified in table 4.2.9.2-1.

Table 4.2.9.2-1: Receive intermodulation characteristics

Parameter	Level		Unit
DPCH_Ec	<REFSENS> + 3 dB		dBm/3,84 MHz
\hat{I}_{or}	<REF \hat{I}_{or} > + 3 dB		dBm/3,84 MHz
I_{ouw1} (CW)	-46		dBm
I_{ouw2} mean power (modulated)	-46		dBm
F_{uw1} (offset)	10	-10	MHz
F_{uw2} (offset)	20	-20	MHz
UE transmitted mean power	20 (for Power class 3) 18 (for Power class 4) (note 3)		dBm
NOTE 1: I_{ouw2} (modulated) consists of the common channels and the 16 dedicated data channels as specified in ETSI TS 125 101 [4].			
NOTE 2: <REFSENS> and <REF \hat{I}_{or} > as specified in ETSI TS 134 121-1 [1].			
NOTE 3: The UE transmitted mean power shall be reduced by 0,5 dB for a UE operating in band XXII.			

Table 4.2.9.2-2: Test parameters for narrow band intermodulation characteristics

Parameter	Unit	Band III, VIII	
DPCH_Ec	dBm/3,84 MHz	<REFSENS> + 10 dB	
\hat{I}_{or}	dBm/3,84 MHz	<REF \hat{I}_{or} > + 10 dB	
I_{ouw1} (CW)	dBm	-43	
I_{ouw2} (GMSK)	dBm	-43	
F_{uw1} (offset)	MHz	3,6	-3,6
F_{uw2} (offset)	MHz	6,0	-6,0
UE transmitted mean power	dBm	20 (for Power class 3) 18 (for Power class 4)	
NOTE 1: <REFSENS> and <REF \hat{I}_{or} > as specified in ETSI TS 134 121-1 [1].			
NOTE 2: I_{ouw2} (GMSK) is an interfering signal as defined in ETSI TS 145 004 [8]. It is a continuous GMSK modulated carrier following the structure of the GSM signals, but with all modulating bits (including the midamble period) derived directly from a random or any pseudo random data stream.			

Test Procedure

- 1) Set the parameters of the CW generator and interference generator as shown in tables 4.2.9.2-1 and 4.2.9.2-2.
- 2) Set the power level of the UE according to tables 4.2.9.2-1 and 4.2.9.2-2 with a ± 1 dB tolerance.
- 3) Measure the BER of DCH received from the UE at the SS.

Details of initial conditions for UEs supporting UTRA FDD can be found in ETSI TS 134 121-1 [1], clause 6.7.

Test Data

Environmental Conditions

Temperature:	21 °C
Relative Humidity:	50 %
ATM Pressure:	101.0 kPa

The testing was performed by Dylan Li on 2017-04-22.

EUT operation mode: Loopback

Test channel: Middle channel

Test condition: Normal

Test Result: Compliant.

WCDMA2100:

The BER are 0.000%, No errors were detected in the presence.

WCDMA900:

The BER are 0.000%, No errors were detected in the presence.

ETSI EN 301 908-2 V11.1.1 (2016-07) §4.2.10 – RECEIVER SPURIOUS EMISSIONS

Applicable Standard

According to ETSI EN 301 908-2 V11.1.1 (2016-07) §4.2.10, The spurious emissions power is the power of emissions, generated or amplified in a receiver, which appear at the UE antenna connector. The requirements in UE transmit bands are valid in URA_PCH, Cell_PCH and idle state.

Limits

The power of any narrow band CW spurious emission shall not exceed the maximum level specified in tables 4.2.10.2-1 and 4.2.10.2-2.

Table 4.2.10.2-1: General receiver spurious emission requirements

Frequency band	Measurement bandwidth	Maximum level
30 MHz ≤ f < 1 GHz	100 kHz	-57 dBm
1 GHz ≤ f ≤ 12,75 GHz	1 MHz	-47 dBm

Table 4.2.10.2-2: Additional receiver spurious emission requirements

Band	Frequency Range	Measurement Bandwidth	Maximum level
I	1 920 MHz ≤ f ≤ 1 980 MHz	3,84 MHz	-60 dBm
III	1 710 MHz ≤ f ≤ 1 785 MHz	3,84 MHz	-60 dBm
VII	2 500 MHz ≤ f ≤ 2 570 MHz	3,84 MHz	-60 dBm
VIII	880 MHz ≤ f ≤ 915 MHz	3,84 MHz	-60 dBm
XV	791 MHz ≤ f < 821 MHz	3,84 MHz	-60 dBm
	921 MHz ≤ f < 925 MHz	100 kHz	-60 dBm (see note)
	925 MHz ≤ f < 935 MHz	100 kHz	-67 dBm (see note)
		3,84 MHz	-60 dBm
	935 MHz ≤ f ≤ 960 MHz	100 kHz	-79 dBm (see note)
	1 805 MHz ≤ f ≤ 1 880 MHz	100 kHz	-71 dBm (see note)
	1 900 MHz ≤ f ≤ 1 920 MHz	3,84 MHz	-60 dBm
2 110 MHz ≤ f ≤ 2 170 MHz	3,84 MHz	-60 dBm	
	2 585 MHz ≤ f ≤ 2 690 MHz	3,84 MHz	-60 dBm

Band	Frequency Range	Measurement Bandwidth	Maximum level
XVI	791 MHz ≤ f < 821 MHz	3,84 MHz	-60 dBm
	921 MHz ≤ f < 925 MHz	100 kHz	-60 dBm (see note)
	925 MHz ≤ f < 935 MHz	100 kHz	-67 dBm (see note)
		3,84 MHz	-60 dBm
	935 MHz ≤ f ≤ 960 MHz	100 kHz	-79 dBm (see note)
	1 805 MHz ≤ f ≤ 1 880 MHz	100 kHz	-71 dBm (see note)
	2 010 MHz ≤ f ≤ 2 025 MHz	3,84 MHz	-60 dBm
	2 110 MHz ≤ f ≤ 2 170 MHz	3,84 MHz	-60 dBm
2 585 MHz ≤ f ≤ 2 690 MHz	3,84 MHz	-60 dBm	
XX	832 MHz ≤ f ≤ 862 MHz	3,84 MHz	-60 dBm
XXII	3 410 MHz ≤ f ≤ 3 490 MHz	3,84 MHz	-60 dBm
NOTE:	The receiver additional spurious emission measurements are made on frequencies which are integer multiples of 200 kHz. As exceptions, up to five measurements with a level up to the applicable requirements defined in table 4.2.10.2-1 are permitted for each UARFCN used in the measurement. This note applies also to receiver additional spurious emission measurements according to table 4.2.12.1.2-1.		

Test Procedure

Sweep the spectrum analyser (or other suitable test equipment) over a frequency range from 30 MHz to 12,75 GHz and measure the average power of the spurious emissions.

Details of test method for UEs supporting UTRA FDD can be found in ETSI TS 134 121-1 [1], clause 6.8.

Test Data

Environmental Conditions

Temperature:	21 °C
Relative Humidity:	50 %
ATM Pressure:	101.0 kPa

The testing was performed by Dylan Li on 2017-04-22.

EUT operation mode: Receiving

Test Result: Compliant. Please refer to following tables.

WCDMA 2100:

Mode	Frequency Range (MHz)	Detector (Peak or Average)	RBW/VBW Setting (kHz)	Result Level (dBm)	Limit (dBm)	Margin (dB)	Result
WCDMA 2100	30-1000	Average	100/300	-64.19	-57	7.19	Pass
	1000-1920	Average	1000/3000	-66.98	-47	19.98	Pass
	1920-1980	Average	3840	-71.48	-60	11.48	Pass
	1980-12750	Average	1000/3000	-65.48	-47	18.48	Pass

WCDMA 900:

Mode	Frequency Range (MHz)	Detector (Peak or Average)	RBW/VBW Setting (kHz)	Result Level (dBm)	Limit (dBm)	Margin (dB)	Result
WCDMA 900	30-880	Average	100/300	-76.48	-57	19.48	Pass
	880-915	Average	3840	-77.68	-60	17.68	Pass
	915-1000	Average	100/300	-74.68	-57	17.68	Pass
	1000-12750	Average	1000/3000	-74.18	-47	27.18	Pass

ETSI EN 301 908-2 V11.1.1 (2016-07) §4.2.11 – OUT-OF-SYNCHRONIZATION HANDLING OF OUTPUT POWER

Applicable Standard

According to ETSI EN 301 908-2 V11.1.1 (2016-07) §4.2.11, The UE shall monitor the DPCCH quality in order to detect a loss of the signal on Layer 1. The threshold Q_{out} specifies at what DPCCH quality levels the UE shall shut its power off. The threshold is not defined explicitly, but is defined by the conditions under which the UE shall shut its transmitter off, as stated in this clause.

The DPCCH quality shall be monitored in the UE and compared to the threshold Q_{out} for the purpose of monitoring synchronization. The threshold Q_{out} should correspond to a level of DPCCH quality where no reliable detection of the TPC commands transmitted on the downlink DPCCH can be made. This can be at a TPC command error ratio level of e.g. 20 %.

Limits

When the UE estimates the DPCCH quality over the last 160 ms period to be worse than a threshold Q_{out} , the UE shall shut its transmitter off within 40 ms.

The quality level at the thresholds Q_{out} correspond to different signal levels depending on the downlink conditions DCH parameters. For the conditions in table 4.2.11.2-1, a signal with the quality at the level Q_{out} can be generated by a DPCCH_ Ec/Ior ratio of -25 dB. The DL reference measurement channel 12,2 kbit/s is specified in ETSI TS 134 121-1 [1] and with static propagation conditions. The downlink physical channels, other than those specified in table 4.2.11.2-1, are as specified in ETSI TS 134 121-1 [1].

Table 4.2.11.2-1: DCH parameters for test of out-of-synchronization handling

Parameter	Value	Unit
\hat{I}_{or}/I_{oc}	-1	dB
I_{oc}	-60	dBm/3,84 MHz
$\frac{DPDCH_E_c}{I_{or}}$	See figure 4.2.11.2-1: Before point A: <ul style="list-style-type: none"> -16,6 for UEs not supporting enhanced receiver performance type 1 for DCH -19,6 for UEs supporting enhanced receiver performance type 1 for DCH After point A not defined	dB
$\frac{DPCCH_E_c}{I_{or}}$	See figure 4.2.11.2-1	dB
Information Data Rate	12,2	kbit/s

Figure 4.2.11.2-1 and table 4.2.11.2-2 show an example scenario where the DPCCH_ Ec/Ior ratio varies from a level where the DPCH is demodulated under normal conditions, down to a level below Q_{out} where the UE shall shut its power off.

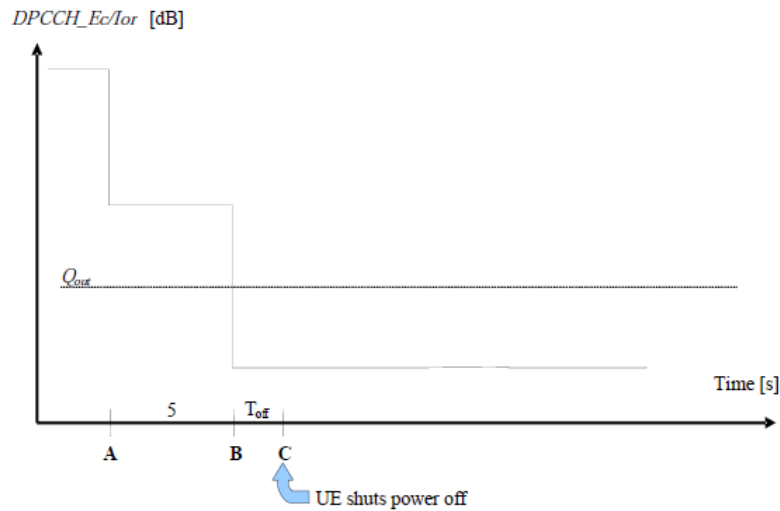


Figure 4.2.11.2-1: Conditions for out-of-synchronization handling in the UE

Table 4.2.11.2-2: Conditions for out-of-synchronization handling in the UE

Clause from figure 4.2.11.2-1	DPCCH_Ec/Ior (UE, not supporting enhanced receiver performance requirements type 1 for DCH)	DPCCH_Ec/Ior (UE, supporting enhanced receiver performance requirements type 1 for DCH)	Unit
Before A	-16,6	-19,6	dB
A to B	-21,6	-24,6	dB
After B	-28,4	-31,4	dB

The requirements for the UE are that it shall shut its transmitter off before point C. The UE transmitter is considered to be OFF if the measured RRC filtered mean power is less than -55 dBm.

Test Procedure

- 1) The SS sends continuously up power control commands to the UE until the UE transmitter power reach maximum level.
- 2) The SS controls the DPCCH_Ec/Ior ratio level according to table 4.2.11.2-2, 'A to B'.
- 3) The SS controls the DPCCH_Ec/Ior ratio level according to table 4.2.11.2-2, 'after B'. The SS waits 200 ms and then verifies that the UE transmitter has been switched off.
- 4) The SS monitors the UE transmitted power for 5 s and verifies that the UE transmitter is not switched on during this time.

Details of test method for UEs supporting UTRA FDD can be found in ETSI TS 134 121-1 [1], clause 5.4.4.

Test Result: Compliance.

ETSI EN 301 908-2 V11.1.1 (2016-07) §4.2.12 – TRANSMITTER ADJACENT CHANNEL LEAKAGE POWER RATIO (ACLR)

Applicable Standard

According to ETSI EN 301 908-2 V11.1.1 (2016-07) §4.2.12, Adjacent Channel Leakage power Ratio (ACLR) is the ratio of the RRC filtered mean power centred on the assigned channel frequency to the RRC filtered mean power centred on an adjacent channel frequency.

Limits

If the adjacent channel power is greater than -50 dBm then the ACLR shall be higher than the value specified in table 4.2.12.1.2-1. The requirements are applicable for all for the values of β_c , β_d , β_{hs} , β_{ec} and β_{ed} defined in ETSI TS 125 214 [7].

Table 4.2.12.1.2-1: UE ACLR

Power Class	Adjacent channel frequency relative to assigned channel frequency	ACLR limit
3	+5 MHz or -5 MHz	32,2 dB
3	+10 MHz or -10 MHz	42,2 dB
4	+5 MHz or -5 MHz	32,2 dB
4	+10 MHz or -10 MHz	42,2 dB

NOTE: The requirement shall still be met in the presence of switching transients.

Test Procedure

According to ETSI EN 301 908-2 V11.1.1 (2016-07) §5.3.11.

Test Data

Environmental Conditions

Temperature:	21°C
Relative Humidity:	50 %
ATM Pressure:	101.0 kPa

The testing was performed by Dylan Li on 2017-04-22.

EUT operation mode: Loopback

Test Result: Compliance.

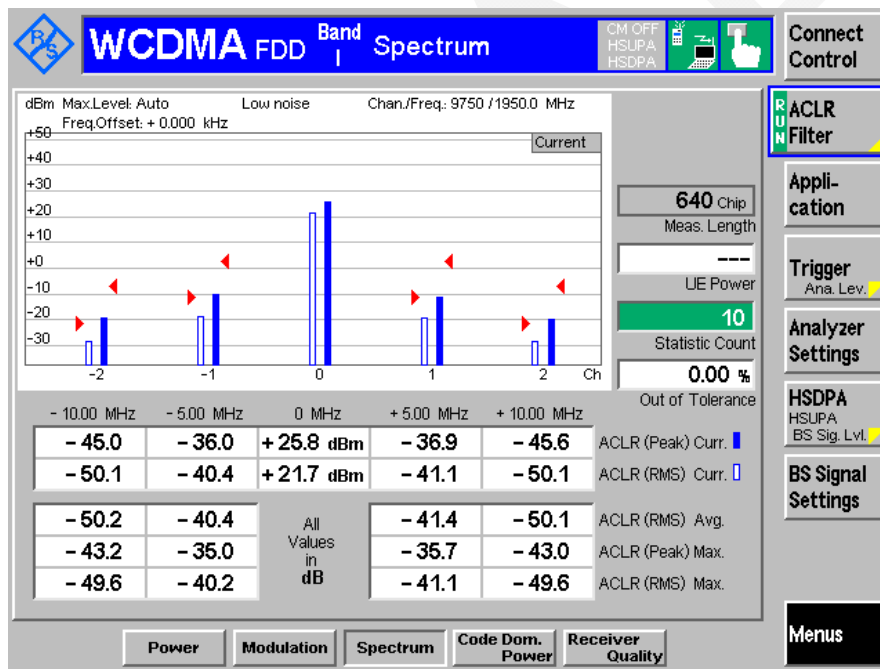
Please refer to following data tables and plots.

WCDMA 2100:

Test Channel: Middle

Condition	Transmitter Adjacent Channel Leakage Power Ratio (dB)			
	ACLR (-10 MHz)	ACLR (-5 MHz)	ACLR (+5 MHz)	ACLR (+10 MHz)
Normal	-50.2	-40.4	-41.4	-50.1
LTLV	-50.3	-40.5	-41.3	-50.3
LTHV	-50.8	-40.7	-41.7	-49.9
HTLV	-50.7	-40.2	-41.9	-50.0
HTHV	-50.1	-40.3	-41.5	-50.8

Normal condition

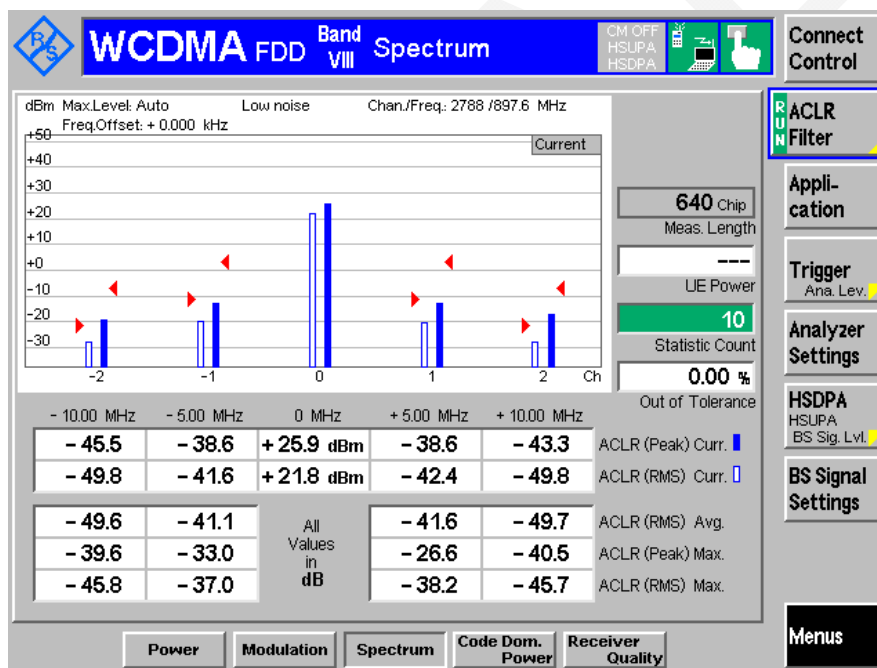


WCDMA 900:

Test Channel: Middle

Condition	Transmitter Adjacent Channel Leakage Power Ratio (dB)			
	ACLR (-10 MHz)	ACLR (-5 MHz)	ACLR (+5 MHz)	ACLR (+10 MHz)
Normal	-49.6	-41.1	-41.6	-49.7
TL/VL	-49.4	-41.0	-41.2	-49.8
TL/VH	-49.7	-41.2	-41.7	-49.5
TH/VL	-49.1	-41.3	-41.1	-49.9
TH/VH	-49.5	-41.7	-41.4	-49.1

Normal Condition



ETSI EN 301 908-2 V11.1.1 (2016-07) §4.2.13 –RECEIVER REFERENCE SENSITIVITY LEVEL

Applicable Standard

According to ETSI EN 301 908-2 V11.1.1 (2016-07) §4.2.13, The reference sensitivity level <REFSENS> is the minimum mean power received at the UE antenna port at which the Bit Error Ratio (BER) shall not exceed a specific value.

Limits

The measured BER shall not exceed 0,001.

Table 4.2.13.2-1: Test parameters for Reference Sensitivity Level

Operating Band	Unit	DPCH_Ec <REFSENS>	<REFI _{or} >
I	dBm/3,84 MHz	-116,3	-106
III	dBm/3,84 MHz	-113,3	-103
VII	dBm/3,84 MHz	-114,3	-104
VIII	dBm/3,84 MHz	-113,3	-103
XX	dBm/3,84 MHz	-113,3	-103
XXII	dBm/3,84 MHz	-113,3	-103

NOTE 1: For Power class 3 and 3bis this shall be at the maximum output power.
NOTE 2: For Power class 4 this shall be at the maximum output power.

NOTE: These requirements do not take into account the allowed increase of the reference sensitivity level of DPCH_Ec <REFSENS> and corresponding < REF_{Ior}>in ETSI TS 134 121-1 [1], table 6.2.2 by the amount defined in minimum requirement clause for the UE, which supports DB-DC-HSDPA or dual band 4C-HSDPA and/or E-UTRA inter-band carrier aggregation.

Test Procedure

- 1) Set and send continuously Up power control commands to the UE until the UE output power shall be maximum level.
- 2) Measure the BER of DCH received from the UE at the SS.

Details of initial conditions for UEs supporting UTRA FDD can be found in ETSI TS 134 121-1 [1], clause 6.2.

Test Data**Environmental Conditions**

Temperature:	21 °C
Relative Humidity:	50 %
ATM Pressure:	101.0 kPa

The testing was performed by Dylan Li on 2017-04-22.

EUT operation mode: Loopback

Test channel: Low/Middle/High channel

Test condition: Normal, LT/LV, LT/HV, HT/LV, HT/HV

Test Result: Compliant.

WCDMA2100:

The BER are 0.000%, No errors were detected in the presence.

WCDMA900:

The BER are 0.000%, No errors were detected in the presence.

EXHIBIT A - EUT PHOTOGRAPHS

EUT – All View



EUT – Front View



EUT – Rear View



EUT – Top View



EUT – Bottom View



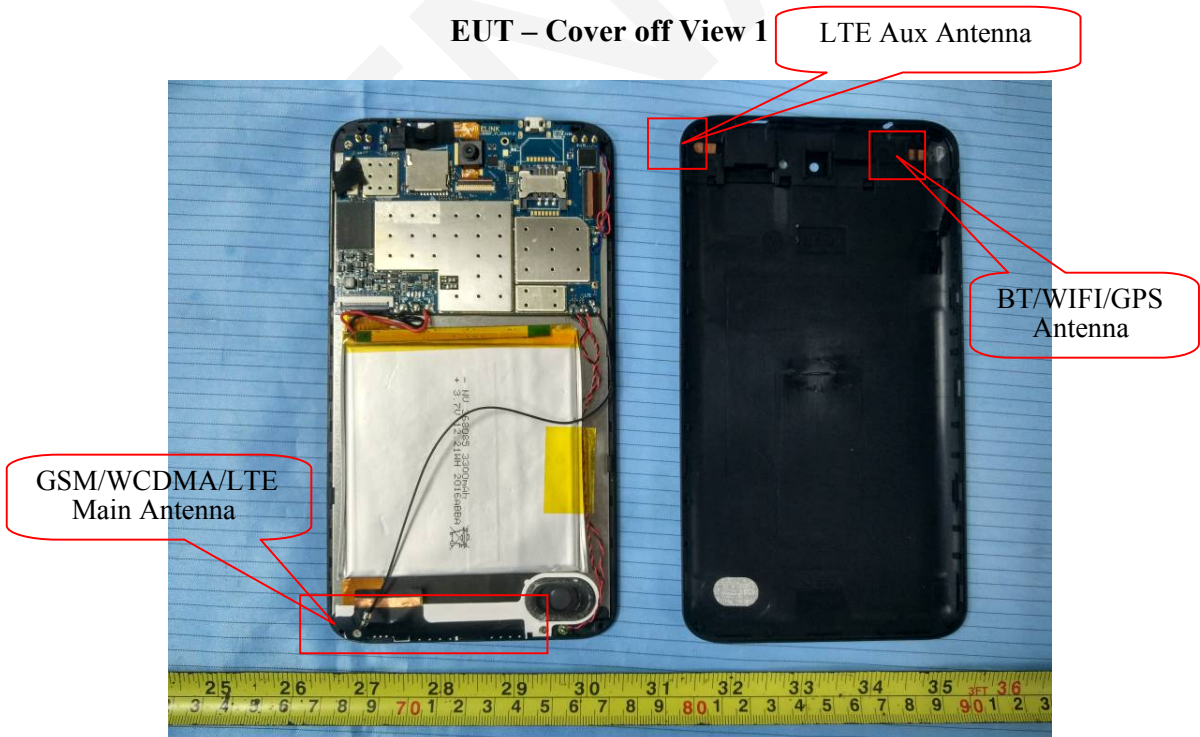
EUT – Left View



EUT – Right View



EUT – Cover off View 1



EUT – Cover off View 2



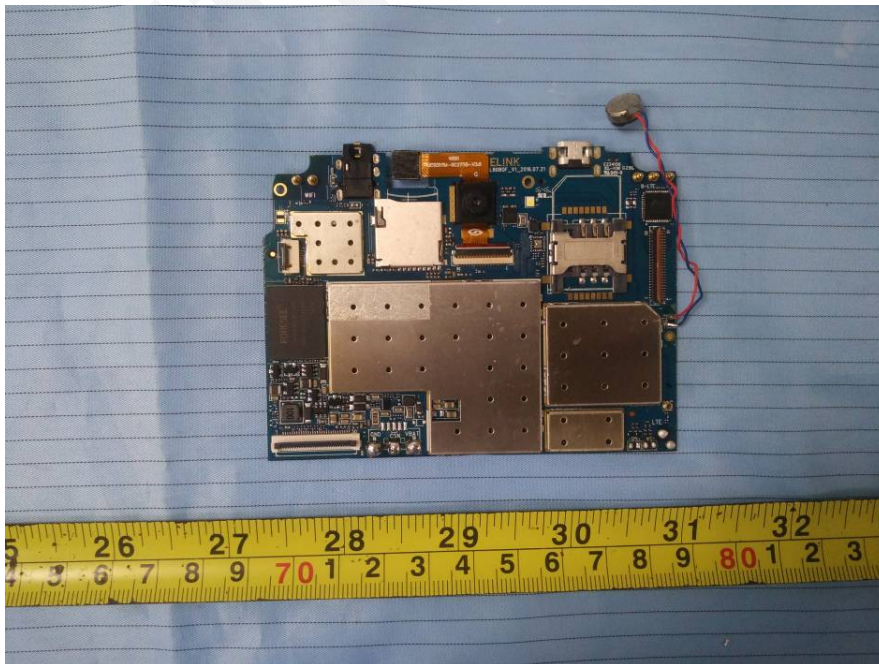
EUT – Cover off View 3



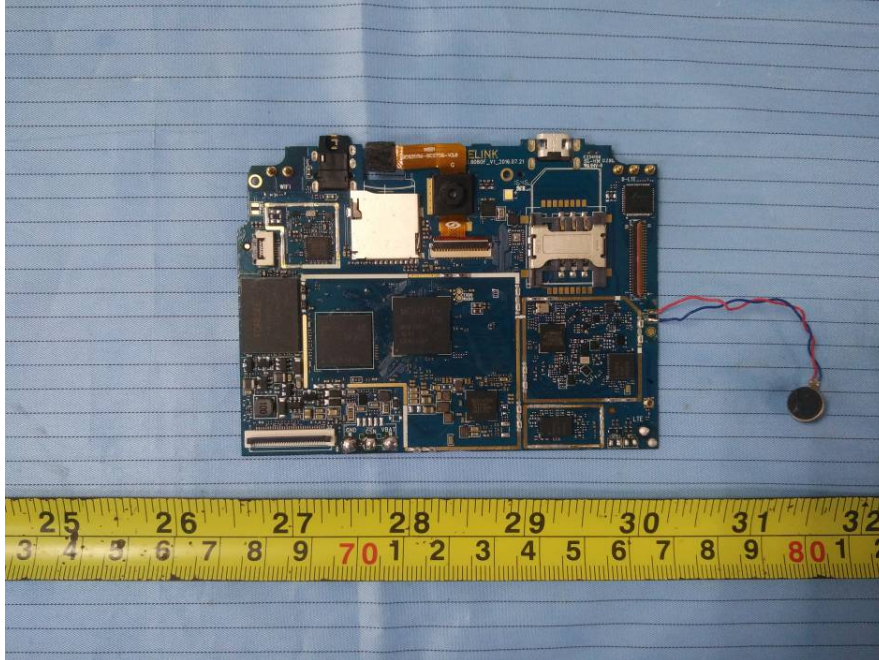
EUT – Cover off View 4



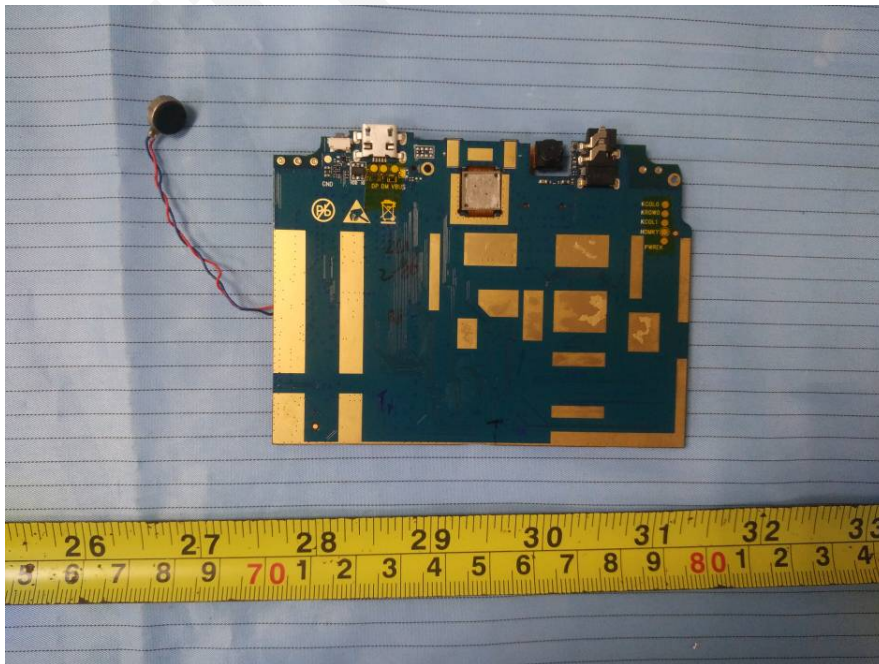
EUT – Main Board Top View



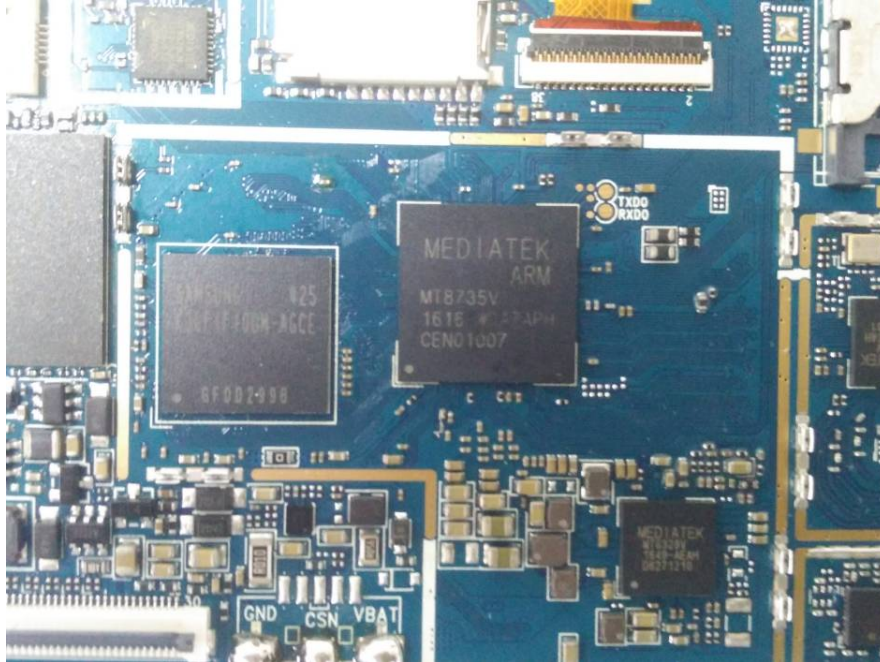
EUT – Main Board Top Shielding off View



EUT –Main Board Bottom View



EUT – IC Chip View



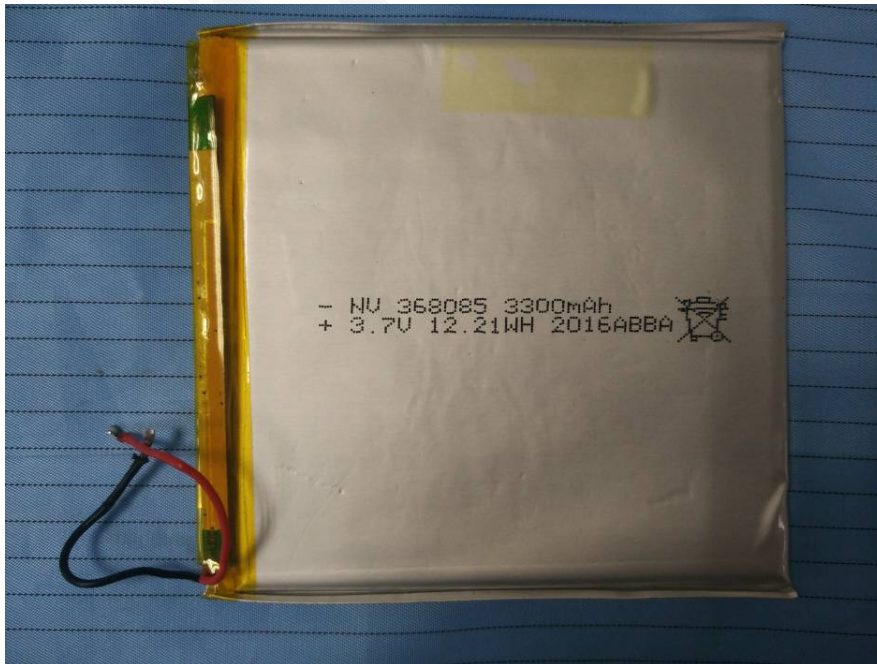
EUT – Adapter View



EUT – Adapter Label View



EUT – Battery Front View



EUT – Battery Rear View



EXHIBIT B - TEST SETUP PHOTOGRAPHS

Radiated Spurious Emissions Test View (Below 1GHz)



Radiated Spurious Emissions Test View (Above 1GHz)



******* END OF REPORT *******