

ETSI EN 301 489-1 V2.2.0 (2017-03)
ETSI EN 301 489-3 V2.1.1 (2017-03)
ETSI EN 301 489-17 V3.2.0 (2017-03)
ETSI EN 301 489-34 V2.1.1 (2017-04)
ETSI EN 301 489-52 V1.1.0 (2016-11)

TEST REPORT

For

Vonino Electronics Limited

Miramar Tower 10F - no1010, 132 Nathan Road, Tsim Sha Tsui, Kowloon, Hong Kong

Model: Xavy G7

Report Type: Amended Report	Product Type: Tablet PC
Report Number:	RSZ170523002-02A1
Report Date:	2017-06-08
Reviewed By:	RF Engineer
Prepared By:	Bay Area Compliance Laboratories Corp. (Shenzhen) 6/F., West Wing, Third Phase of Wanli Industrial Building, Shihua Road, Futian Free Trade Zone, Shenzhen, Guangdong, China Tel: +86-755-33320018 Fax: +86-755-33320008 www.baclcorp.com.cn

Note: This test report is prepared for the customer shown above and for the equipment described herein. It may not be duplicated or used in part without prior written consent from Bay Area Compliance Laboratories Corp. This report is valid only with a valid digital signature. The digital signature may be available only under the Adobe software above version 7.0.

TABLE OF CONTENTS

DOCUMENT REVISION HISTORY3
BELOW IS THE REFERENCED REPORT4

DRAFT

DOCUMENT REVISION HISTORY

Revision Number	Report Number	Description of Revision	Date of Issue
0	RSZ170417008-02	Original Report	2017-05-02
1	RSZ170523002-02A1	Amended Report	2017-06-08

Note:

This is an amended report application based on original report, the details as below:

1. Change the applicant to “Vonino Electronics Limited”.
2. Change the applicant address to “Miramar Tower 10F - no1010, 132 Nathan Road, Tsim Sha Tsui, Kowloon, Hong Kong”
3. Change the model to “Xavy G7”.
4. Change the trade name to “Vonino”.

Based on the above difference, it will affect nothing, so all the data and photos please refer to the original report.

BELOW IS THE REFERENCED REPORT

ETSI EN 301 489-1 V2.2.0 (2017-03)
 ETSI EN 301 489-3 V2.1.1 (2017-03)
 ETSI EN 301 489-17 V3.2.0 (2017-03)
 ETSI EN 301 489-34 V2.1.1 (2017-04)
 ETSI EN 301 489-52 V1.1.0 (2016-11)

TEST REPORT

For

Shenzhen Adreamer Technology Co., Ltd

Building A2, Silicon Valley Dynamic Qinghu Garden, Dahe Rd., Longhua, Shenzhen, China

Tested Model: MK6952
Multiple Model: Xavy G7

Report Type: Original Report	Product Type: Tablet PC
Report Number:	RSZ170417008-02
Report Date:	2017-05-02
Reviewed By:	Simon Wang <i>Simon wang</i> RF Engineer
Prepared By:	Bay Area Compliance Laboratories Corp. (Shenzhen) 6/F., West Wing, Third Phase of Wanli Industrial Building, Shihua Road, Futian Free Trade Zone, Shenzhen, Guangdong, China Tel: +86-755-33320018 Fax: +86-755-33320008 www.baclcorp.com.cn

Note: This test report is prepared for the customer shown above and for the equipment described herein. It may not be duplicated or used in part without prior written consent from Bay Area Compliance Laboratories Corp. This report is valid only with a valid digital signature. The digital signature may be available only under the Adobe software above version 7.0.

TABLE OF CONTENTS

GENERAL INFORMATION.....	4
PRODUCT DESCRIPTION FOR EQUIPMENT UNDER TEST (EUT).....	4
OBJECTIVE.....	4
TEST METHODOLOGY.....	4
MEASUREMENT UNCERTAINTY.....	5
TEST FACILITY.....	5
SYSTEM TEST CONFIGURATION.....	6
DESCRIPTION OF TEST CONFIGURATION.....	6
EQUIPMENT MODIFICATIONS.....	6
SUPPORT EQUIPMENT LIST AND DETAILS.....	6
EXTERNAL I/O CABLE.....	6
BLOCK DIAGRAM OF TEST SETUP.....	7
SUMMARY OF TEST RESULTS.....	8
TEST EQUIPMENT LIST.....	9
§7.1 - CONDUCTED EMISSIONS.....	11
EUT SETUP.....	11
EMI TEST RECEIVER SETUP.....	11
TEST PROCEDURE.....	11
CORRECTED FACTOR & MARGIN CALCULATION.....	12
TEST RESULTS SUMMARY.....	12
TEST DATA.....	12
§7.1 - RADIATED EMISSIONS.....	15
TEST SYSTEM SETUP.....	15
EMI TEST RECEIVER SETUP.....	15
TEST PROCEDURE.....	15
CORRECTED AMPLITUDE & MARGIN CALCULATION.....	16
TEST RESULTS SUMMARY.....	16
TEST DATA.....	16
§7.1 - HARMONIC CURRENT EMISSIONS.....	19
§7.1-VOLTAGE FLUCTUATION AND FLICKER.....	20
TEST SYSTEM SETUP.....	20
TEST STANDARD.....	20
TEST DATA AND SETUP PHOTO.....	21
§7.2 - RF ELECTROMAGNETIC FIELD (80-6000MHz).....	23
TEST SYSTEM SETUP.....	23
TEST STANDARD.....	23
TEST PROCEDURE.....	24
TEST DATA AND SETUP PHOTO.....	24
§7.2 - ELECTROSTATIC DISCHARGE.....	27
TEST SYSTEM SETUP.....	27
TEST STANDARD.....	27

TEST PROCEDURE	28
TEST DATA AND SETUP PHOTO	28
§7.2 - ELECTRICAL FAST TRANSIENT IMMUNITY	32
TEST SYSTEM SETUP	32
TEST STANDARD	32
TEST PROCEDURE	33
TEST DATA AND SETUP PHOTO	33
§7.2 - RF COMMON MODE.....	35
TEST SETUP	35
TEST STANDARD	35
TEST PROCEDURE	35
TEST DATA AND SETUP PHOTO	36
§7.2 - SURGES, LINE TO LINE AND LINE TO GROUND	37
TEST SYSTEM SETUP	37
TEST STANDARD	37
TEST PROCEDURE	38
TEST DATA AND SETUP PHOTO	38
§7.2 - VOLTAGE DIPS AND INTERRUPTIONS IMMUNITY TEST	40
TEST SETUP	40
TEST STANDARD	40
TEST PROCEDURE	40
TEST DATA AND SETUP PHOTO	41
EXHIBIT A - EUT PHOTOGRAPHS.....	42
EUT – ALL VIEW	42
EUT – FRONT VIEW	42
EUT – REAR VIEW	43
EUT – TOP VIEW	43
EUT – BOTTOM VIEW	44
EUT – LEFT VIEW	44
EUT – RIGHT VIEW	45
EUT – COVER OFF VIEW 1	45
EUT – COVER OFF VIEW 2	46
EUT – COVER OFF VIEW 3	46
EUT – COVER OFF VIEW 4	47
EUT – MAIN BOARD TOP VIEW	47
EUT – MAIN BOARD TOP SHIELDING OFF VIEW	48
EUT –MAIN BOARD BOTTOM VIEW	48
EUT – IC CHIP VIEW	49
EUT – ADAPTER VIEW	49
EUT – ADAPTER LABEL VIEW	50
EUT – BATTERY FRONT VIEW	50
EUT – BATTERY REAR VIEW	51
EXHIBIT B – TEST SETUP PHOTOGRAPHS.....	52
CONDUCTED EMISSIONS - FRONT VIEW	52
CONDUCTED EMISSIONS - SIDE VIEW	52
RADIATED EMISSIONS – FRONT VIEW (BELOW 1 GHz)	53
RADIATED EMISSIONS – REAR VIEW (BELOW 1 GHz)	53
RADIATED EMISSIONS – FRONT VIEW (ABOVE 1 GHz).....	54
RADIATED EMISSIONS – REAR VIEW (ABOVE 1 GHz)	54

GENERAL INFORMATION

Product Description for Equipment under Test (EUT)

The *Shenzhen Adreamer Technology Co., Ltd's* product, model number: *MK6952* in this report is a *Tablet PC*, which was measured approximately: 186 mm (L) * 101mm (W) * 9.6mm (H), rated with input voltage: DC 3.7V from rechargeable li-ion battery or DC 5.0V from adapter.

Adapter information

Model: C2000

Input: AC 100-240V 50/60Hz 0.3A

Output: DC 5.0V, 2.0A

Notes: This series products model: Xavy G7 and MK6952 are identical; they have the same or similar appearance, structure, PCB, Material and function to the testing products, and only are different for model name. Model MK6952 was selected for fully testing, the detailed information can be referred to the attached declaration which was stated and guaranteed by the applicant.

** All measurement and test data in this report was gathered from production sample serial number: 1700688 (Assigned by BAACL, Shenzhen). The EUT supplied by the applicant was received on 2017-04-17.*

Objective

This test report is prepared on behalf of *Shenzhen Adreamer Technology Co., Ltd* in accordance with ETSI EN 301 489-3 V2.1.1 (2017-03), ElectroMagnetic Compatibility (EMC) standard for radio equipment and services; Part 3: Specific conditions for Short-Range Devices (SRD) operating on frequencies between 9 kHz and 246 GHz; ETSI EN 301 489-17 V3.2.0 (2017-03), ElectroMagnetic Compatibility (EMC) standard for radio equipment and services; Part 17: Specific conditions for Broadband Data Transmission Systems; ETSI EN 301 489-34 V2.1.1 (2017-04), ElectroMagnetic Compatibility (EMC) standard for radio equipment and services; Part 34: Specific conditions for External Power Supply (EPS) for mobile phones; and ETSI EN 301 489-52 V1.1.0 (2016-11), Electromagnetic Compatibility (EMC) standard for radio equipment and services; Part 52: Specific conditions for Cellular Communication Mobile and portable (UE) radio and ancillary equipment; Harmonised Standard covering the essential requirements of article 3.1(b) of Directive 2014/53/EU.

The objective is to determine compliance with ETSI EN 301 489-3 V2.1.1 (2017-03), ETSI EN 301 489-17 V3.2.0 (2017-03), ETSI EN 301 489-34 V2.1.1 (2017-04) and ETSI EN 301 489-52 V1.1.0 (2016-11).

Test Methodology

All measurements contained in this report were conducted with ETSI EN 301 489-1 V2.2.0 (2017-03).

Measurement Uncertainty

All measurements involve certain levels of uncertainties, especially in field of EMC. The factors contributing to uncertainties are spectrum analyzer, cable loss, antenna factor calibration, antenna directivity, antenna factor variation with height, antenna phase center variation, antenna factor frequency interpolation, measurement distance variation, site imperfections, mismatch (average), and system repeatability.

Based on CISPR 16-4-2:2011, the expanded combined standard uncertainty of test at Bay Area Compliance Laboratories Corp. (Shenzhen) is shown as below. And the uncertainty will be taken into consideration for the test data recorded in the report

Item		Expanded Measurement uncertainty	
Conducted Emissions	AC Mains	2.20 dB (k=2, 95% level of confidence)	
	CAT 3	3.70 dB (k=2, 95% level of confidence)	
	CAT 5	3.86 dB (k=2, 95% level of confidence)	
	CAT 6	4.64 dB (k=2, 95% level of confidence)	
Radiated emission	30MHz~200MHz	Horizontal	4.58 dB (k=2, 95% level of confidence)
		Vertical	4.59 dB (k=2, 95% level of confidence)
	200MHz~1 GHz	Horizontal	4.83 dB (k=2, 95% level of confidence)
		Vertical	5.85 dB (k=2, 95% level of confidence)
	1 GHz~6 GHz	Horizontal/Vertical	4.08 dB (k=2, 95% level of confidence)
	Above 6 GHz	Horizontal/Vertical	4.59 dB (k=2, 95% level of confidence)

Test Facility

The test site used by Bay Area Compliance Laboratories Corp.(Shenzhen) to collect test data is located on the 6/F., West Wing, Third Phase of Wanli Industrial Building, Shihua Road, Futian Free Trade Zone, Shenzhen, Guangdong, China.

Test site at Bay Area Compliance Laboratories Corp. (Shenzhen) has been fully described in reports submitted to the Federal Communication Commission (FCC). The details of these reports have been found to be in compliance with the requirements of Section 2.948 of the FCC Rules on October 31, 2013. The facility also complies with the radiated and AC line conducted test site criteria set forth in ANSI C63.4-2014.

The Federal Communications Commission has the reports on file and is listed under FCC Registration No.: 382179. The test site has been approved by the FCC for public use and is listed in the FCC Public Access Link (PAL) database.

SYSTEM TEST CONFIGURATION

Description of Test Configuration

The system was configured for testing in a typical fashion (as normally used by a typical user)

EUT Operation Mode 1: GPS receiving (working with GPS generator)

EUT Operation Mode 2: Bluetooth transmitting (working and monitoring with CMW500)

EUT Operation Mode 3: Wi-Fi transmitting (working and monitoring with Wireless Router)

EUT Operation Mode 4: GSM/DCS/EDGE transmitting (working and monitoring with CMU 200 & sound analyser)

EUT Operation Mode 5: WCDMA transmitting (working and monitoring with CMU 200)

EUT Operation Mode 6: LTE transmitting (working and monitoring with CMW500)

EUT Operation Mode 7: Charging

EUT Operation Mode 8: Running with test load (EPS)

Equipment Modifications

No modifications were made to the EUT.

Support Equipment List and Details

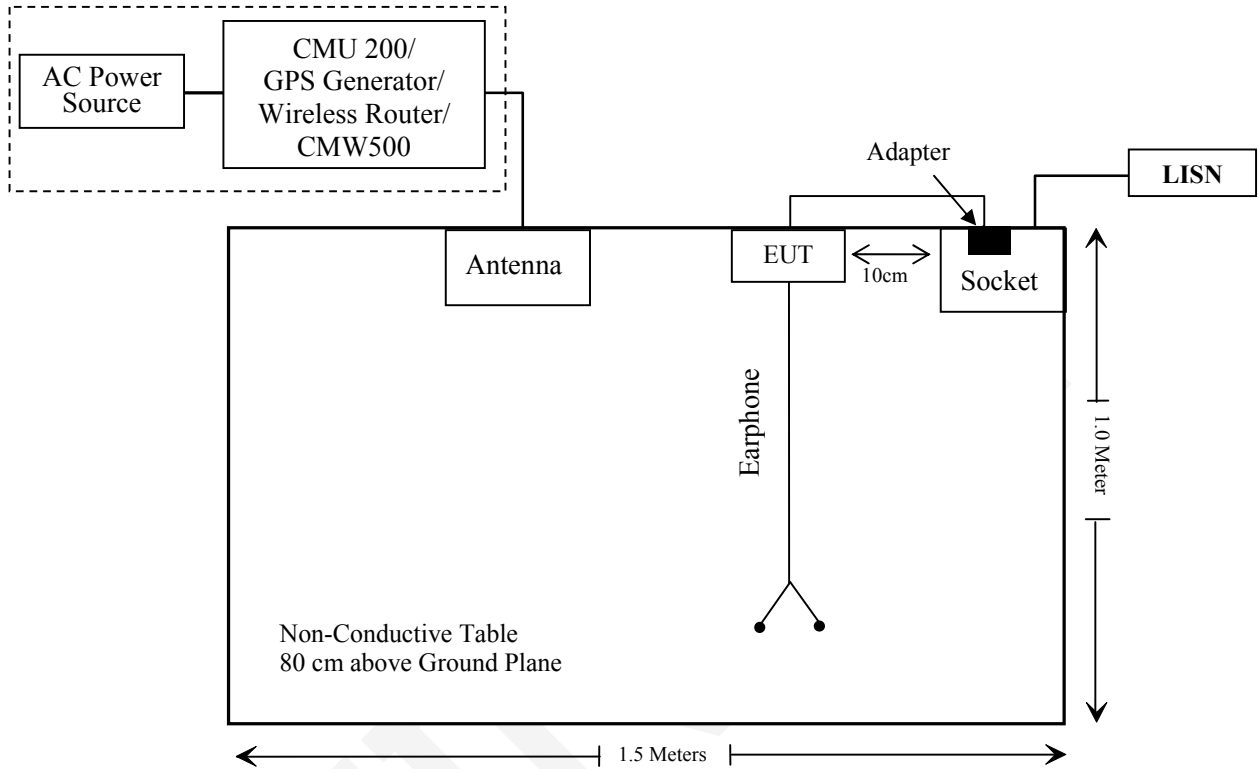
Manufacturer	Description	Model	Serial Number
R & S	Universal Radio Communication Tester	CMU200	106891
SAGEM	Wireless ADSL Router	SAGEM F@ST TM 2604 White	N/A
MEGURO	GPS Signal Generator	MSG-2050	N/A
Rohde & Schwarz	Wideband Radio Communication Tester	CMW500	114772

External I/O Cable

Cable Description	Length (m)	From/Port	To
Un-Shielding Detachable USB Cable	0.8	EUT	Adapter

Block Diagram of Test Setup

Test Mode 1 & Test Mode 2 & Test Mode 3 & Test Mode 4 & Test Mode 5 & Test Mode 6 & Test Mode 7 & Test Mode 8:



SUMMARY OF TEST RESULTS

Rules	Description of Test	Result
§7.1	Reference to clauses EN 301 489-1 §8.4 AC mains power input/output ports	Compliance
	Reference to clauses EN 301 489-1 §8.3 DC power input/output ports	Not Applicable
	Reference to clauses EN 301 489-1 §8.2 Enclosure of ancillary equipment measured on a stand alone basis	Compliance
	Reference to clauses EN 301 489-1 §8.5 Harmonic current emissions (AC mains input port)	Compliance
	Reference to clauses EN 301 489-1 §8.6 Voltage fluctuations and flicker (AC mains input port)	Compliance
	Reference to clauses EN 301 489-1 §8.7 Wired network ports	Not Applicable
§7.2	Reference to clauses EN 301 489-1 §9.2 Radio frequency electromagnetic field (80 MHz to 6 000 MHz)(EN 61000-4-3)	Compliance
	Reference to clauses EN 301 489-1 §9.3 Electrostatic discharge (EN 61000-4-2)	Compliance
	Reference to clauses EN 301 489-1 §9.4 Fast transients, common mode (EN 61000-4-4)	Compliance
	Reference to clauses EN 301 489-1 §9.5 Radio frequency, common mode (EN 61000-4-6)	Compliance
	Reference to clauses EN 301 489-1 §9.6 Transients and surges in the vehicular environment (ISO 7637-2)	Not Applicable
	Reference to clauses EN 301 489-1 §9.8 Surges (EN 61000-4-5)	Compliance
	Reference to clauses EN 301 489-1 §9.7 Voltage dips and interruptions (EN 61000-4-11)	Compliance

Not Applicable: Please refer to Applicability overview tables in sections 7.1 and 7.2 of EN 301 489-1 requirements for Radio and ancillary equipment.

TEST EQUIPMENT LIST

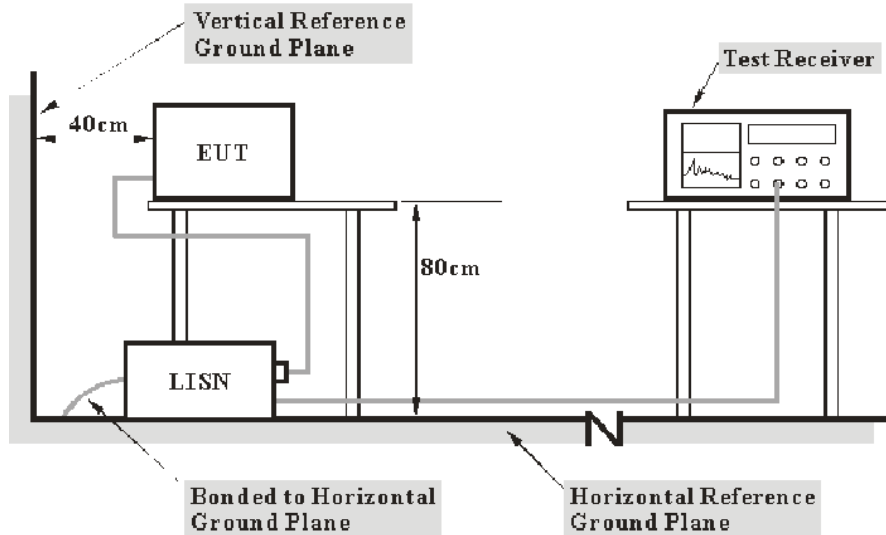
Manufacturer	Description	Model	Serial Number	Calibration Date	Calibration Due Date
EMI					
Rohde & Schwarz	EMI Test Receiver	ESCS30	100176	2016-10-19	2017-10-19
Rohde & Schwarz	LISN	ENV216	3560.6650.12-101613-Yb	2016-12-07	2017-12-07
Rohde & Schwarz	Transient Limiter	ESH3Z2	DE25985	2017-02-14	2017-08-15
Rohde & Schwarz	CE Test software	EMC 32	V8.53.0	NCR	NCR
TDK	Chamber	Chamber A	2#	2016-12-05	2019-12-05
HP	Amplifier	HP8447E	1937A01046	2016-11-16	2017-05-03
Rohde & Schwarz	EMI Test Receiver	ESCI	101120	2016-12-07	2017-12-07
Sunol Sciences	Bi-log Antenna	JB1	A040904-2	2014-12-17	2017-12-16
BIZI	Signal Analyzer	FSEM	845987/005	2017-04-14	2018-04-14
Mini	Pre-Amplifier	ZVA-183-S+	5969001149	2017-02-14	2018-02-14
A.H.System	Horn Antenna	SAS-200/571	135	2015-08-18	2018-08-17
TDK	Chamber	Chamber B	1#	2016-12-06	2019-12-06
Rohde & Schwarz	Auto test Software	EMC32	V9.10	NCR	NCR
EM Test	Harmonic/Flicker Analyzer	DPA 500N	V0939105176	2016-12-06	2017-12-06
EM Test	AC Source	ACS500	303276	2016-12-06	2017-12-06
EM Test	Test Software	DPA. Control	V5.0.3.0	NCR	NCR

Manufacturer	Description	Model	Serial Number	Calibration Date	Calibration Due Date
EMS					
SCHAFFNER	ESD Tester	NSG 438	1476	2016-07-13	2017-07-13
EM Test	EMS Combination Tester	UCS 500 N5	V0939105172	2016-12-06	2017-12-06
EM Test	AC Source	MV2616	V0939105173	2016-12-06	2017-12-06
EM Test	Test Software	IEC. Control	V5.0.9.0	NCR	NCR
Krohn-hite	Audio Filter	3940	003096	NCR	NCR
Agilent	Signal Generator	8665B	3744A01692	2017-01-12	2018-01-12
A&R	Power Amplifier	500W100B	0348446	NCR	NCR
A&R	Power Amplifier	60S1G6	0348712	NCR	NCR
A&R	RF Power Amplifier	15A250	13444	NCR	NCR
EMCO	Horn Antenna	3115	9903-5766	NCR	NCR
Sunol Sciences	Bi-log Antenna	JB1	A040904-1	NCR	NCR
BACL	Sound detecting Holder	N/A	N/A	NCR	NCR
Rohde & Schwarz	Audio Analyzer	UPV	1146.2003K02 -101782-XP	2016-05-09	2017-05-09
ETS	Fully Anechoic Chamber	/	/	2016-05-26	2019-05-26
/	6dB Attenuator	/	/	2016-12-15	2017-12-14
HP	Signal Generator	8657A	3217A04699	2016-12-18	2017-12-17
COM-POWER	CDN	M325E	521145	2018-02-27	2018-02-27

* **Statement of Traceability:** Bay Area Compliance Laboratories Corp. (Shenzhen) attests that all calibrations have been performed in accordance to requirements that traceable to National Primary Standards and International System of Units (SI).

§7.1 - CONDUCTED EMISSIONS

EUT Setup



- Note: 1. Support units were connected to second LISN.
 2. Both of LISNs (AMN) 80 cm from EUT and at the least 80 cm from other units and other metal planes support units.

The setup of EUT is according with per EN 301 489-1 measurement procedures. The specification used was with the EN 301 489-1 limits.

The external I/O cables were draped along the test table and formed a bundle 30 to 40 cm long in the middle.

The spacing between the peripherals was 10 cm.

EMI Test Receiver Setup

The EMI test receiver was set to investigate the spectrum from 150 kHz to 30 MHz.

During the conducted emission test, the EMI test receiver was set with the following configurations:

Frequency Range	IF B/W
150 kHz – 30 MHz	9 kHz

Test Procedure

Maximizing procedure was performed on the six (6) highest emissions of the EUT.

All final data was recorded in the Quasi-peak and average detection mode.

Corrected Factor & Margin Calculation

The Corrected factor is calculated by adding LISN/ISN VDF (Voltage Division Factor), Cable Loss and Transient Limiter Attenuation. The basic equation is as follows:

Correction Factor = LISN VDF + Cable Loss + Transient Limiter Attenuation

The “**Margin**” column of the following data tables indicates the degree of compliance with the applicable limit. For example, a margin of 7 dB means the emission is 7 dB below the limit. The equation for margin calculation is as follows:

$$\text{Margin} = \text{Limit} - \text{Corrected Amplitude}$$

Test Results Summary

According to the recorded data in following table, the EUT complied with the EN 301489-1,

Refer to CISPR16-4-2:2011 and CISPR 16-4-1:2009, the measured level is in compliance with the limit if

$$L_m + U_{(Lm)} \leq L_{lim} + U_{cispr}$$

In BACL, $U_{(Lm)}$ is less than U_{cispr} , if L_m is less than L_{lim} , it implies that the EUT complies with the limit.

Test Data

Environmental Conditions

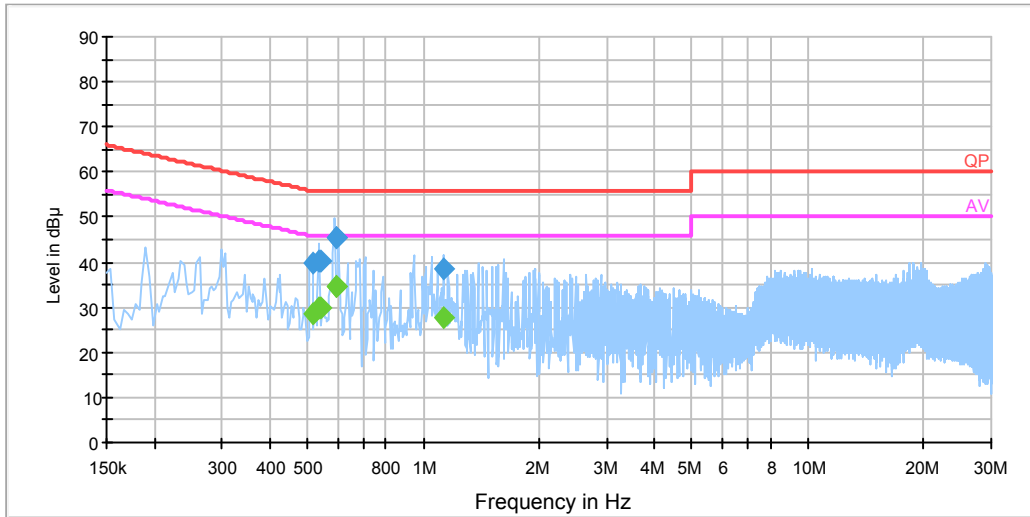
Temperature:	23°C
Relative Humidity:	46 %
ATM Pressure:	101.0 kPa

The testing was performed by Dylan Li on 2017-04-20.

Test Mode 4 (worst case):

AC 230 V/ 50 Hz, Line:

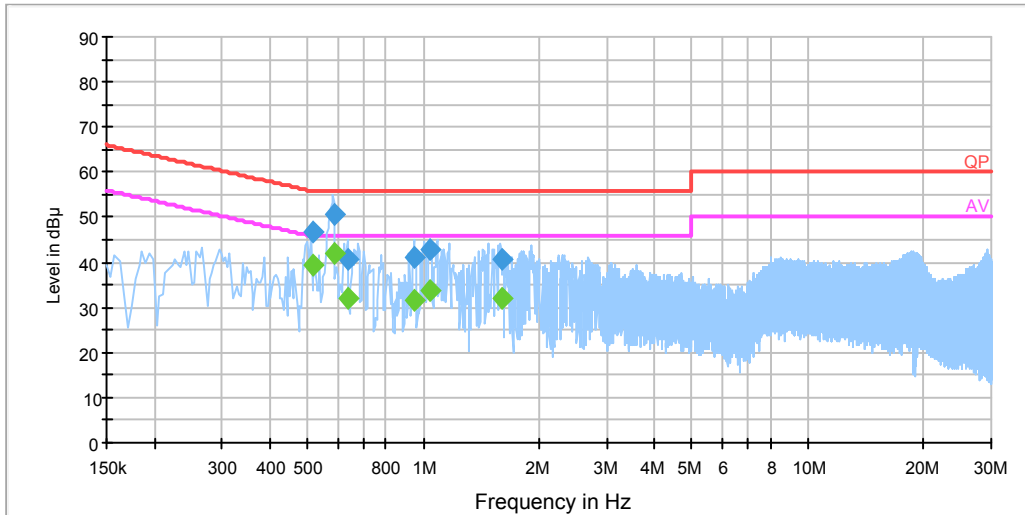
EMI Auto Test L



Frequency (MHz)	Corrected Amplitude (dBµV)	Corrected Factor (dB)	Limit (dBµV)	Margin (dB)	Remark (PK/ QP/Ave.)
0.517650	39.6	19.9	56.0	16.4	QP
0.537930	40.4	19.8	56.0	15.6	QP
0.542010	40.4	19.8	56.0	15.6	QP
0.592970	45.5	19.8	56.0	10.5	QP
0.593150	45.5	19.8	56.0	10.5	QP
1.125050	38.5	19.8	56.0	17.5	QP
0.517650	28.6	19.9	46.0	17.4	Ave.
0.537930	30.0	19.8	46.0	16.0	Ave.
0.542010	30.0	19.8	46.0	16.0	Ave.
0.592970	34.6	19.8	46.0	11.4	Ave.
0.593150	34.6	19.8	46.0	11.4	Ave.
1.125050	27.9	19.8	46.0	18.1	Ave.

AC 230 V/ 50 Hz, Neutral:

EMI Auto Test N



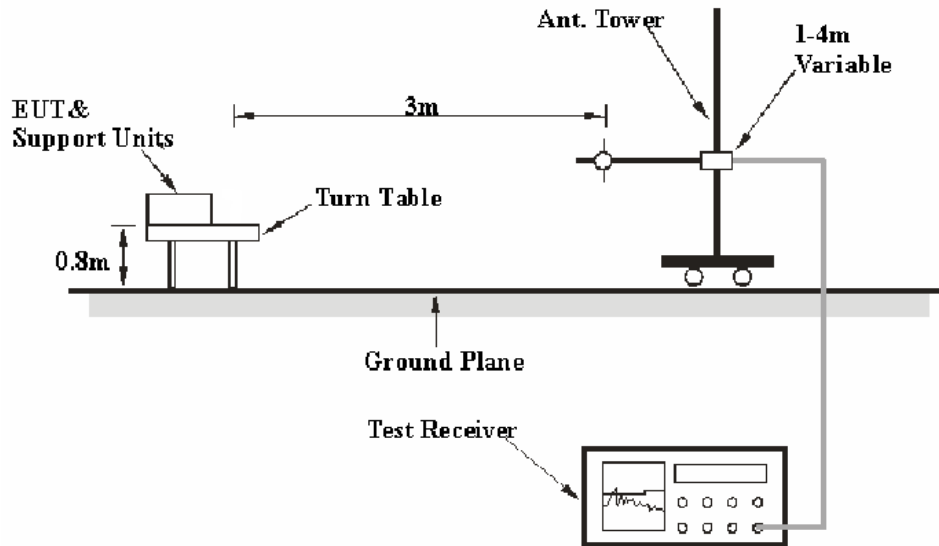
Frequency (MHz)	Corrected Amplitude (dBµV)	Corrected Factor (dB)	Limit (dBµV)	Margin (dB)	Remark (PK/ QP/Ave.)
0.514350	46.6	20.0	56.0	9.4	QP
0.585270	50.8	19.9	56.0	5.2	QP
0.636490	40.8	19.8	56.0	15.2	QP
0.943810	40.9	19.9	56.0	15.1	QP
1.042310	42.8	19.9	56.0	13.2	QP
1.598150	40.6	19.9	56.0	15.4	QP
0.514350	39.3	20.0	46.0	6.7	Ave.
0.585270	41.8	19.9	46.0	4.2	Ave.
0.636490	31.9	19.8	46.0	14.1	Ave.
0.943810	31.6	19.9	46.0	14.4	Ave.
1.042310	33.8	19.9	46.0	12.2	Ave.
1.598150	32.2	19.9	46.0	13.8	Ave.

Note:

- 1) Correction Factor = LISN/ISN VDF (Voltage Division Factor) + Cable Loss + Transient Limiter Attenuation
- 2) Corrected Amplitude = Reading + Correction Factor
- 3) Margin = Limit - Corrected Amplitude

§7.1 - RADIATED EMISSIONS

Test System Setup



The radiated emission tests were performed in the 3 meters chamber test site, using the setup accordance with the CISPR 16-1-4:2012, CISPR 16-2-3:2010. The limit was specified in EN 301 489-1.

The external I/O cables were draped along the test table and formed a bundle 30 to 40 cm long in the middle.

The spacing between the peripherals was 10 cm.

EMI Test Receiver Setup

The system was investigated from 30 MHz to 6 GHz.

During the radiated emission test, the EMI test receiver Setup was set with the following configurations:

Frequency Range	RBW	Video B/W	IF B/W	Detector
30 MHz – 1000 MHz	100 kHz	300 kHz	120 kHz	QP
1 GHz – 6 GHz	1 MHz	3 MHz	-	Peak
1 GHz – 6 GHz	1 MHz	3 MHz	-	Average

Test Procedure

Maximizing procedure was performed on the highest emissions to ensure that the EUT complied with all installation combinations.

All final data was recorded in the Quasi-peak detection mode for below 1 GHz, and Peak and Average for above 1 GHz.

Corrected Amplitude & Margin Calculation

The Corrected Amplitude is calculated by adding the Antenna Factor and Cable Loss, and subtracting the Amplifier Gain from the Meter Reading. The basic equation is as follows:

$$\text{Corrected Amplitude} = \text{Meter Reading} + \text{Antenna Factor} + \text{Cable Loss} - \text{Amplifier Gain}$$

The “**Margin**” column of the following data tables indicates the degree of compliance with the applicable limit. For example, a margin of 7 dB means the emission is 7 dB below the limit for Class B. The equation for margin calculation is as follows:

$$\text{Margin} = \text{Limit} - \text{Corrected Amplitude.}$$

Test Results Summary

According to the recorded data in following table, the EUT complied with the EN 301489-1,

Refer to CISPR16-4-2:2011 and CISPR 16-4-1:2009, the measured level is in compliance with the limit if

$$L_m + U_{(L_m)} \leq L_{\text{lim}} + U_{\text{cispr}}$$

In BACL, $U_{(L_m)}$ is less than U_{cispr} , if L_m is less than L_{lim} , it implies that the EUT complies with the limit.

Test Data

Environmental Conditions

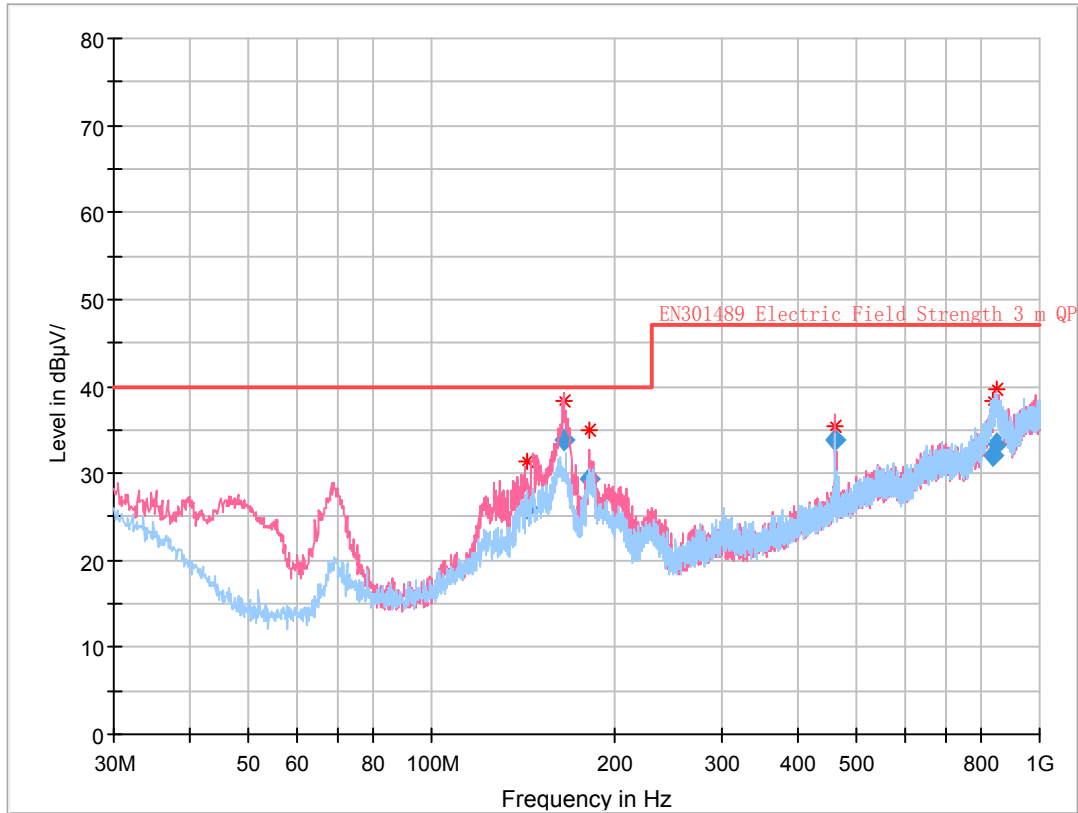
Temperature:	23 °C
Relative Humidity:	46 %
ATM Pressure:	101.0 kPa

The testing was performed by Dylan Li on 2017-04-20.

Test Mode 7:

30 MHz-1 GHz:

Full Spectrum



Frequency (MHz)	Corrected Amplitude (dBµV/m)	Antenna height (cm)	Antenna Polarity	Turntable position (degree)	Correction Factor (dB/m)	Limit (dBµV/m)	Margin (dB)
143.114375	25.89	100.0	V	161.0	-6.4	40.00	14.11
164.708000	33.89	105.0	V	69.0	-6.8	40.00	6.11
182.325500	29.30	101.0	V	61.0	-7.2	40.00	10.70
461.361375	33.75	218.0	V	207.0	-1.0	47.00	13.25
835.904125	31.96	399.0	H	54.0	9.8	47.00	15.04
849.643125	33.31	256.0	V	278.0	11.2	47.00	13.69

Above 1 GHz:

Frequency (MHz)	Receiver		Turntable Degree	Rx Antenna		Corrected Factor (dB)	Corrected Amplitude (dB μ V/m)	EN301489-1	
	Reading (dB μ V)	Detector (PK/QP/Ave.)		Height (m)	Polar (H/V)			Limit (dB μ V/m)	Margin (dB)
1745.86	41.52	PK	237	2.2	H	-4.70	36.82	70	33.18
1745.86	26.43	Ave.	237	2.2	H	-4.70	21.73	50	28.27
1769.06	40.45	PK	181	1.5	V	-3.30	37.15	70	32.85
1769.06	25.30	Ave.	181	1.5	V	-3.30	22.00	50	28.00
2287.15	43.29	PK	316	1.2	H	-0.51	42.78	70	27.22
2287.15	24.18	Ave.	316	1.2	H	-0.51	23.67	50	26.33
2262.34	39.15	PK	159	1.9	V	-0.51	38.64	70	31.36
2262.34	24.06	Ave.	159	1.9	V	-0.51	23.55	50	26.45

Note:

- 1) Corrected Amplitude = Meter Reading + Correction Factor
- 2) Correction Factor = Antenna Factor + Cable Loss - Amplifier Gain
- 3) Margin = Limit - Corrected Amplitude

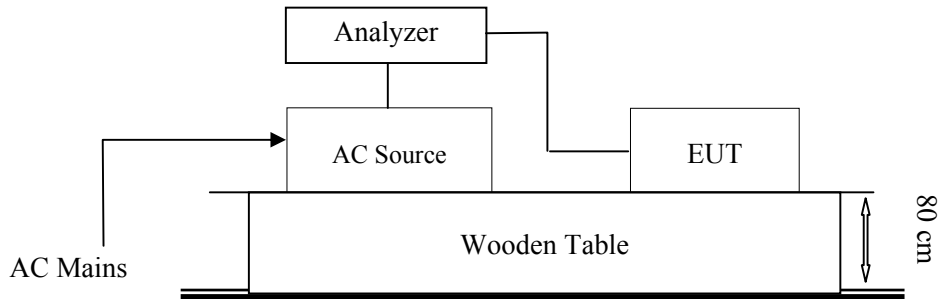
§7.1 - HARMONIC CURRENT EMISSIONS

According to EN 61000-3-2-2014 section 7: Equipment with a rated power of 75 Watt or less, other than lighting equipment, are not included in this standard.

F I N A L

§7.1-VOLTAGE FLUCTUATION AND FLICKER

Test System Setup



Test Standard

EN 61000-3-3:2013

Flicker Test Limits:

The limits shall be applicable to voltage fluctuations and flicker at the supply terminals of the equipment under test, measured or calculated according to clause 4 under test conditions described in clause 6 and annex A. Tests made to prove compliance with the limits are considered to be type tests.

The following limits apply:

- the value of Pst shall not be greater than 1,0;
- the value of Plt shall not be greater than 0,65;
- the value of d(t) during a voltage change shall not exceed 3,3 % for more than 500 ms;
- the relative steady-state voltage change, dc, shall not exceed 3,3 %;
- the maximum relative voltage change dmax, shall not exceed
 - a) 4 % without additional conditions;
 - b) 6 % for equipment which is:
 - switched manually, or
 - switched automatically more frequently than twice per day, and also has either a delayed restart (the delay being not less than a few tens of seconds), or manual restart, after a power supply interruption.

Note: The cycling frequency will be further limited by the Pst and Plt limit. For example: a dmax of 6 % producing a rectangular voltage change characteristic twice per hour will give a Plt of about 0,65.

c) 7 % for equipment which is

- attended whilst in use (for example: hair dryers, vacuum cleaners, kitchen equipment such as mixers, garden equipment such as lawn mowers, portable tools such as electric drills), or
- switched on automatically, or is intended to be switched on manually, no more than twice per day, and also has either a delayed restart (the delay being not less than a few tens of seconds) or manual restart, after a power supply interruption.

In the case of equipment having several separately controlled circuits in accordance with 6.6, limits b) and c) shall apply only if there is delayed or manual restart after a power supply interruption; for all equipment with automatic switching which is energized immediately on restoration of supply after a power supply interruption, limits a) shall apply; for all equipment with manual switching, limits b) or c) shall apply depending on the rate of switching. Pst and Plt requirements shall not be applied to voltage changes caused by manual switching. The limits shall not be applied to voltage changes associated with emergency switching or emergency interruptions.

Test Data and Setup Photo

Environmental Conditions

Temperature:	23°C
Relative Humidity:	46%
ATM Pressure:	101.0 kPa

Date of test:	14:20 20. Apr 2017
Tester:	Dylan Li
Standard used:	EN/IEC 61000-3-3 Flicker
Short time (Pst):	10 min
Observation time:	120 min (12 Flicker measurements)
Flicker meter:	230V / 50Hz
Flicker Impedance:	Zref (IEC 60725)
Customer:	Shenzhen Adreamer Technology Co., Ltd
E. U. T.:	Tablet PC
Model:	MK6952
EUT operation mode	Test Mode 4(Worst case)

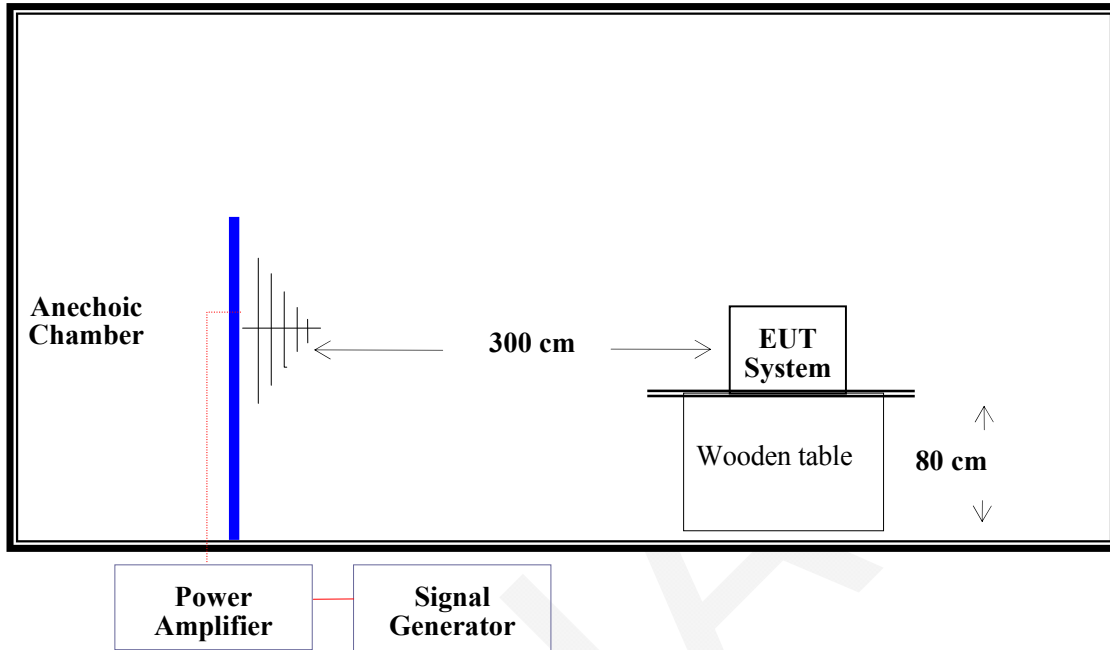
Maximum Flicker results

	EUT values	Limit	Result
Pst	0.028	1.00	Pass
Plt	0.028	0.65	Pass
dc [%]	0.014	3.30	Pass
dmax [%]	0.244	4.00	Pass
dt [s]	0.000	0.50	Pass

**Test Setup Photo**

§7.2 - RF ELECTROMAGNETIC FIELD (80-6000MHz)

Test System Setup



Test Standard

ETSI EN 301 489-1 V2.2.0 / EN 61000-4-3:2006+A1:2008 +A2: 2010
 Test Level 2 at 3V / m
 Test Levels and Performance Criterion

Test Level

Level	Field Strength (V/m)
1.	1
2.	3
3.	10
X.	Special

Test Procedure

The EUT and its simulators are placed on a turn table which is 0.8 meter above the ground. The EUT is set 3 meters away from the transmitting antenna which is mounted on an antenna tower. Both horizontal and vertical polarizations of the antenna are set on test. Each of the four sides of EUT must be faced this transmitting antenna and measured individually. In order to judge the EUT performance, a CCD camera and artificial station are used to monitor the EUT or an artificial ear and sound level meter were used to monitor the sound pressure level. All the scanning conditions are as follows:

Condition of Test	Remarks
1. Field Strength	3 V/m (Test Level 2)
2. Radiated Signal	Modulated
3. Scanning Frequency	80 - 6000 MHz
4. Sweeping time of radiated	0.0015 decade/s
5. Dwell Time	1 Sec.

Test Data and Setup Photo

Environmental Conditions

Temperature:	23 °C
Relative Humidity:	46 %
ATM Pressure:	101.0 kPa

The testing was performed by Dylan Li on 2017-04-20.

Test mode 1&Test mode 2&Test mode 3&Test mode 4&Test mode 5&Test mode 6&Test mode 7:

Frequency Range (MHz)	Front Side (3 V/m)		Rear Side (3 V/m)		Left Side (3 V/m)		Right Side (3 V/m)	
	VERT	HORI	VERT	HORI	VERT	HORI	VERT	HORI
80-6000	A	A	A	A	A	A	A	A

Performance Criterion: A

EUT Operation Mode 1 & EUT Operation Mode 7:

Note: "A" stand for, during test, operate as intended No loss function, and after test, operate as intended.

EUT Operation Mode 2 & EUT Operation Mode 3:

Note: "A" stand for, during test, operate as intended No loss function, no degradation of performance, no unintentional transmissions and after test, no degradation of performance, no loss of function, no loss of stored data or user programmable functions.

EUT Operation Mode 4:

Note: "A" stand for, the uplink/downlink speech output level shall be at least 35 dB less than the previously recorded reference levels, when measured through an audio band pass filter of width 200 Hz, centred on 1 kHz (audio breakthrough check). The RXQUAL of the downlink is not exceeding the value of three, measured during each individual exposure in the test sequence. Or during and after the test, the apparatus continue to operate as intended. No degradation of performance or loss of function is allowed below a permissible performance level

EUT Operation Mode 5:

Note: "A" stand for, In the data transfer mode, the BER (as referred in TS 134 109 [8]) is used, it shall not exceed 0,001 during the test sequence, in the speech mode, the performance criteria shall be that the up link and downlink speech output levels shall be at least 35 dB less than the recorded reference levels, when measured through an audio band pass filter of width 200 Hz, centred on 1 kHz. In idle mode, the transmitter is not unintentionally operate.

EUT Operation Mode 6:

Note: "A" stand for, In the data transfer mode, the performance criteria shall be that the throughput shall be $\geq 95\%$ of the maximum throughput of the reference measurement channel as specified in annex C in TS 136 101 [13] with parameters specified in tables 7.3.1-1 and 7.3.1-2 in TS 136 101 [13] during the test sequence.

EUT Operation Mode 8:

Frequency Range (MHz)	Front Side (10 V/m)		Rear Side (10 V/m)		Left Side (10 V/m)		Right Side (10 V/m)	
	VERT	HORI	VERT	HORI	VERT	HORI	VERT	HORI
80-6000	A	A	A	A	A	A	A	A

Performance Criterion: A

Note: "A" stand for:

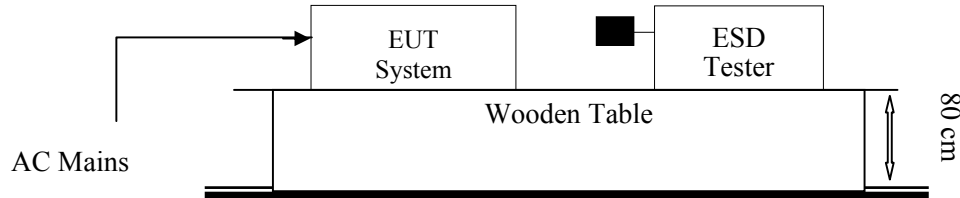
- ① Output Voltage $5\text{ V} \pm 0,25\text{ V}$ from no load to maximum output current measured at the USB Micro-B plug.
- ② Output Current at $5\text{ V} \pm 0,25\text{ V}$ within 500 mA to 1 500 mA depending on the generic test load and EPS capability.
- ③ Output Voltage Ripple (Under load conditions from idle to full): 80 mVp-p measured at 20 MHz bandwidth using the test method as defined in Addendum II of M/455 EN Annex II Part A [2].



Test Setup Photo

§7.2 - ELECTROSTATIC DISCHARGE

Test System Setup



Remark: ■ is the tip of the electrode

EN 61000-4-2 specifies that a tabletop EUT shall be placed on a non-conducting table which is 80 centimeters above a ground reference plane and that floor mounted equipment shall be placed on a insulating support approximately 10 centimeters above a ground plane. During the tests, the EUT is positioned over a ground reference plane in conformance with this requirement.

For tabletop equipment, a 1.6 by 0.8-meter metal sheet (HCP) is placed on the table and connected to the ground plane via a metal strap with two 470 k Ohms resistors in series. The EUT and attached cables are isolated from this metal sheet by 0.5-millimeter thick insulating material. A Vertical Coupling Plane (VCP) grounded on the ground plane through the same configuration as in the HCP is used.

Test Standard

ETSI EN 301 489-1 V2.2.0 / EN 61000-4-2:2009

Air Discharge at ± 2 kV, ± 4 kV, ± 8 kV

Contact Discharge at ± 2 kV, ± 4 kV

Test Level

Level	Test Voltage Contact Discharge (\pm kV)	Test Voltage Air Discharge (\pm kV)
1.	2	2
2.	4	4
3.	6	8
4.	8	15
X.	Special	Special

Performance criterion: B

Test Procedure

Air Discharge:

This test is done on a non-conductive surface. The round discharge tip of the discharge electrode shall be approached as fast as possible to touch the EUT. After each discharge, the discharge electrode shall be removed from the EUT. The generator is then re-triggered for a new single discharge and repeated 10 times for each pre-selected test point. This procedure shall be repeated until all the air discharge completed.

Contact Discharge:

All the procedure shall be same as Section 8.3.1 of EN 61000-4-2, except that the tip of the discharge electrode shall touch the EUT before the discharge switch is operated.

Indirect discharge for horizontal coupling plane

At least 50 single discharges shall be applied to the horizontal coupling plane, at points on each side of the EUT. The discharge electrode positions vertically at a distance of 0.1m from the EUT and with the discharge electrode touching the coupling plane.

Indirect discharge for vertical coupling plane

At least 50 single discharges shall be applied to the center of one vertical edge of the coupling plane. The coupling plane, of dimensions 0.5m × 0.5m, is placed parallel to, and positioned at a distance of 0.1m from the EUT. Discharges shall be applied to the coupling plane, with this plane in sufficient different positions that the four faces of the EUT are completely illuminated.

Test Data and Setup Photo

Environmental Conditions

Temperature:	23 °C
Relative Humidity:	46 %
ATM Pressure:	101.0 kPa

The testing was performed by Dylan Li on 2017-04-20.

Test mode 1&Test mode 2&Test mode 3&Test mode 4&Test mode 5&Test mode 6&Test mode 7&Test mode 8:

Table 1: Electrostatic Discharge Immunity (Air Discharge)

EN 61000-4-2 Test Points Location	Test Levels							
	-2 kV	+2 kV	-4 kV	+4 kV	-8 kV	+8 kV	-15 kV	+15 kV
Front (5 points)	A	A	A	A	A	A	/	/
Rear (4 points)	A	A	A	A	A	A	/	/
Left (2 point)	A	A	A	A	A	A	/	/
Right (2 points)	A	A	A	A	A	A	/	/
Top (2 points)	A	A	A	A	A	A	/	/
Bottom (1 point)	A	A	A	A	A	A	/	/

Table 2: Electrostatic Discharge Immunity (Direct Contact)

EN 61000-4-2 Test Points Location	Test Levels							
	-2 kV	+2 kV	-4 kV	+4 kV	-6 kV	+6 kV	-8 kV	+8 kV
Front (1 point)	A	A	A	A	/	/	/	/

Table 3: Electrostatic Discharge Immunity (Indirect Contact HCP)

EN 61000-4-2 Test Points Location	Test Levels							
	-2 kV	+2 kV	-4 kV	+4 kV	-6 kV	+6 kV	-8 kV	+8 kV
Front Side	A	A	A	A	/	/	/	/
Back Side	A	A	A	A	/	/	/	/
Left Side	A	A	A	A	/	/	/	/
Right Side	A	A	A	A	/	/	/	/

Table 4: Electrostatic Discharge Immunity (Indirect Contact VCP)

EN 61000-4-2 Test Points Location	Test Levels							
	-2 kV	+2 kV	-4 kV	+4 kV	-6 kV	+6 kV	-8 kV	+8 kV
Front Side	A	A	A	A	/	/	/	/
Back Side	A	A	A	A	/	/	/	/
Left Side	A	A	A	A	/	/	/	/
Right Side	A	A	A	A	/	/	/	/



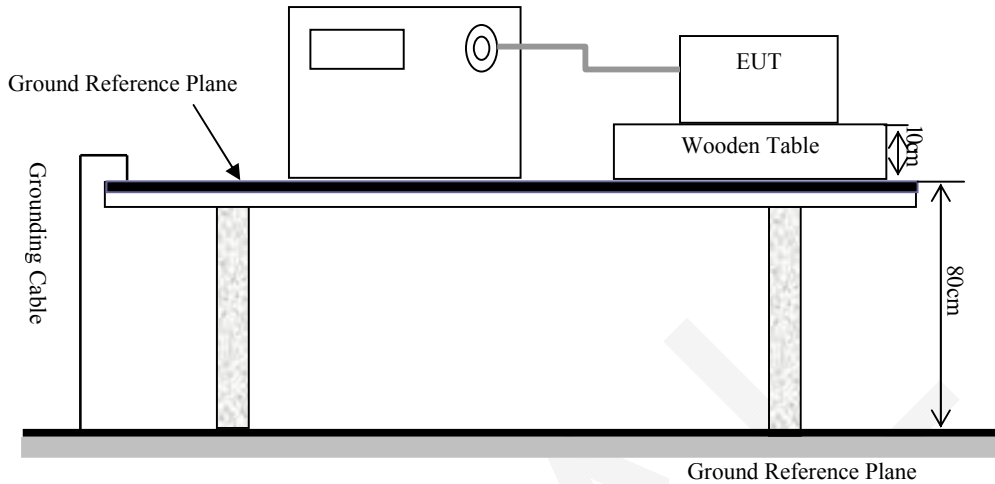
Note:  represents air discharge,  represents direct contact



Test Setup Photos

§7.2 - ELECTRICAL FAST TRANSIENT IMMUNITY

Test System Setup



Test Standard

ETSI EN 301 489-1 V2.2.0 / EN 61000-4-4: 2004 + A1:2010
 AC Mains: Test level 2 at 1 kV

Test Level

Open Circuit Output Test Voltage $\pm 10\%$		
Level	On Power Supply Lines	On I/O (Input/Output) Signal data and control lines
1	0.5 kV	0.25 kV
2	1 kV	0.5 kV
3	2 kV	1 kV
4	4 kV	2 kV
X	Special	Special

Performance Criterion: B

Test Procedure

The EUT was arranged for Power Line Coupling and for I/O Line Coupling through a capacitive clamp, where applicable. (Note: The I/O coupling test using a capacitive clamp is performed on the I/O interface cables that are longer in length than 3 meters.) A metal ground plane 2.4 meter by 2.0 meter was placed between the floor and the table and is connected to the earth by a 2.0 meter ground rod. The ground rod is connected to the test facility’s electrical earth.

Test Data and Setup Photo

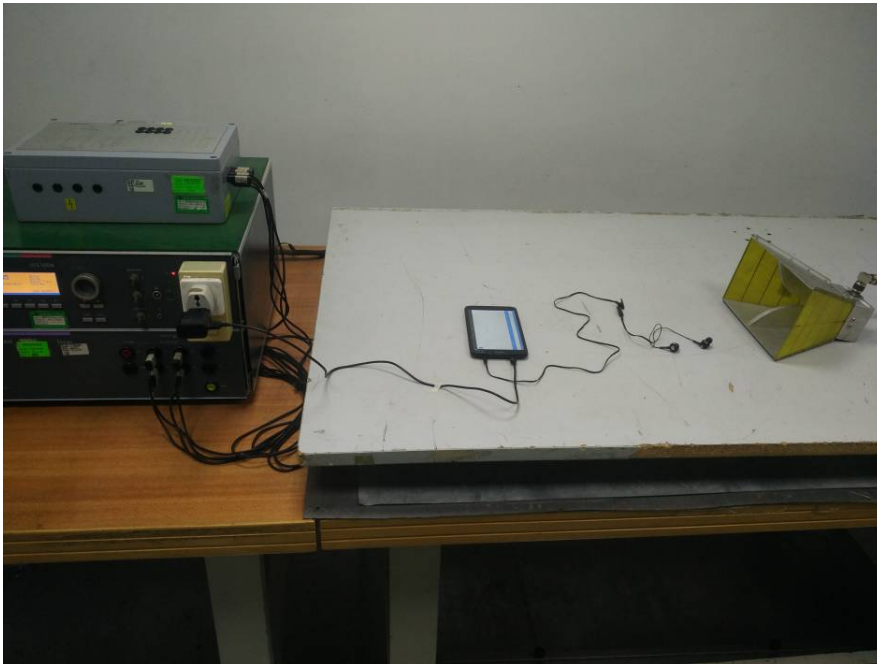
Environmental Conditions

Temperature:	23°C
Relative Humidity:	46 %
ATM Pressure:	101.0 kPa

The testing was performed by Dylan Li on 2017-04-20.

Test mode 1&Test mode 2&Test mode 3&Test mode 4&Test mode 5&Test mode 6&Test mode 7&Test mode 8:

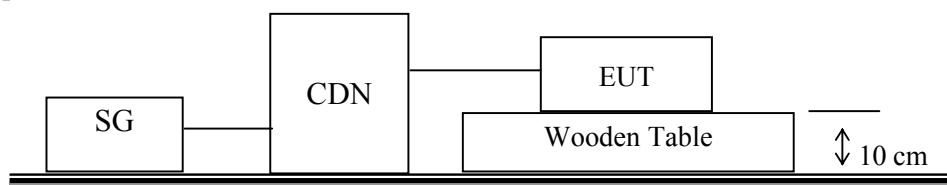
EN 61000-4-4 Test Points		Test Levels (kV)							
		+0.5	-0.5	+1.0	-1.0	+2.0	-2.0	+4.0	-4.0
AC Mains Power Input Ports	L1	/	/	A	A	/	/	/	/
	N	/	/	A	A	/	/	/	/
	PE	/	/	/	/	/	/	/	/
	L1/N	/	/	A	A	/	/	/	/
	L1/PE	/	/	/	/	/	/	/	/
	N/PE	/	/	/	/	/	/	/	/
	L1/N/PE	/	/	/	/	/	/	/	/
Signal Port	/	/	/	/	/	/	/	/	



Test Setup Photo

§7.2 - RF COMMON MODE

Test Setup



Test Standard

ETSI EN 301 489-1 V2.2.0/EN 61000-4-6: 2009
Test level 2 at 3 V (r.m.s.), 0.15 MHz ~ 80 MHz

Test Level

Level	Voltage Level (r.m.s.) (U_0)
1	1
2	3
3	10
X	Special

Performance Criterion: A

Note: “A” stand for, during test, operate as intended no loss function, no degradation of performance, no unintentional retransmissions and after test, no degradation of performance, no loss of function, no loss of stored data or user programmable functions.

Test Procedure

- 1) Let the EUT work in test mode and test it.
- 2) The EUT are placed on an insulating support 0.1 m high above a ground reference plane. CDN (coupling and decoupling device) is placed on the ground plane about 0.3 m from EUT. Cables between CDN and EUT are as short as possible, and their height above the ground reference plane shall be between 30 and 50 mm (where possible).
- 3) The disturbance signal described below is injected to EUT through CDN.
- 4) The EUT operates within its operational mode(s) under intended climatic conditions after power on.
- 5) The frequency range is swept from 150 kHz to 80 MHz using 3V signal level, and with the disturbance signal 80% amplitude modulated with a 1 kHz sine wave.
- 6) The rate of sweep shall not exceed 1.5×10^{-3} decades/s. Where the frequency is swept incrementally, the step size shall not exceed 1% of the start and thereafter 1% of the preceding frequency value.
- 7) Recording the EUT operating situation during compliance testing and decide the EUT immunity criterion.

Test Data and Setup Photo

Environmental Conditions

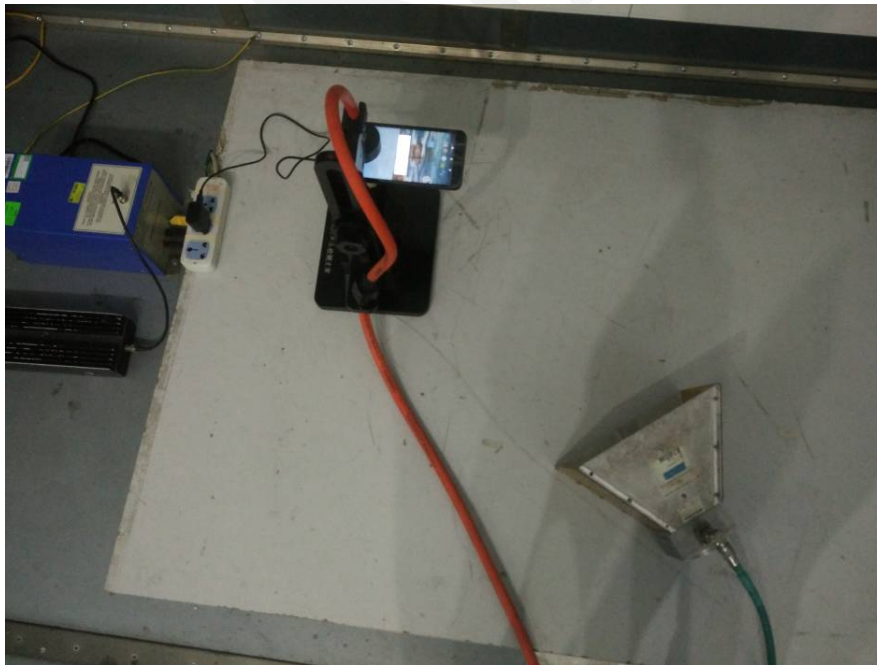
Temperature:	23°C
Relative Humidity:	46%
ATM Pressure:	101.0 kPa

The testing was performed by Dylan Li on 2017-04-20.

Test mode 1&Test mode 2&Test mode 3&Test mode 4&Test mode 5&Test mode 6&Test mode 7&Test mode 8:

Table 1: AC mains power input port
Frequency range: 150 kHz to 80 MHz
Modulation: Amplitude 80%, 1 kHz sine wave
Test level: 3V r.m.s.

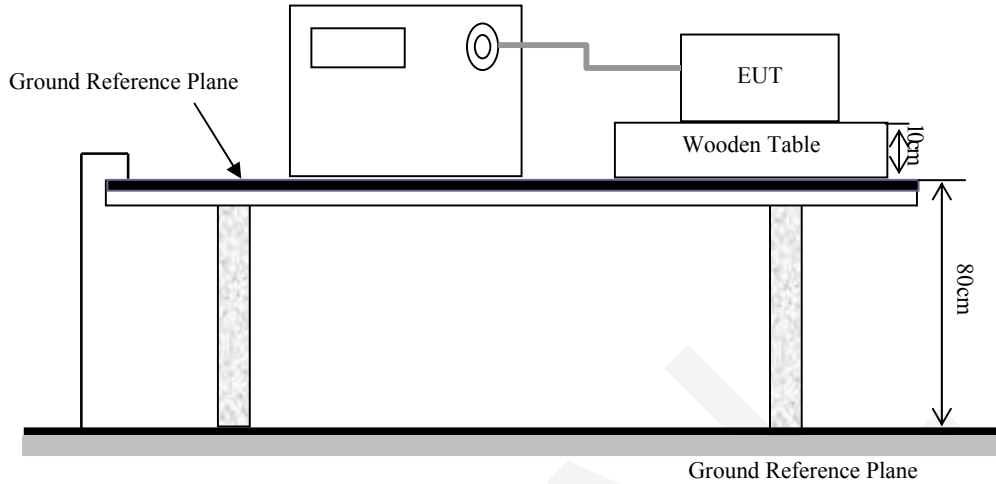
Level	Voltage Level (r.m.s.) U ₀	Pass	Fail
1	1	/	/
2	3	A	/
3	10	/	/
X	Special	/	/



Test Setup Photo

§7.2 - SURGES, LINE TO LINE AND LINE TO GROUND

Test System Setup



Test Standard

ETSI EN 301 489-1 V2.2.0/ EN 61000-4-5: 2006
 AC Mains port:
 Line to Line at $\pm 0.5\text{kV}$, $\pm 1\text{kV}$;

Test Level

Level	Open Circuit Output Test Voltage $\pm 10\%$	Performance Criterion	
		AC Mains	Signal Port
1	0.5 kV	B	C
2	1 kV	B	C
3	2 kV	B	C
4	4 kV	B	C
X	Special	/	/

Test Procedure

- 1) For line to line coupling mode, provide a 1.2/50 μ s voltage surge (at open-circuit condition) and a 8/20 μ s current surge into a short circuit.
- 2) For telecommunication port, provide a 10/700 μ s voltage surge (at open-circuit condition) and a 5/320 μ s current surge into a short circuit.
- 3) At least 5 positive and 5 negative (polarity) tests with a maximum 1/min repetition rate are conducted during test.
- 4) Different phase angles are done individually.
- 5) Record the EUT operating situation during compliance test and decide the EUT immunity criterion for above each test.

Test Data and Setup Photo

Environmental Conditions

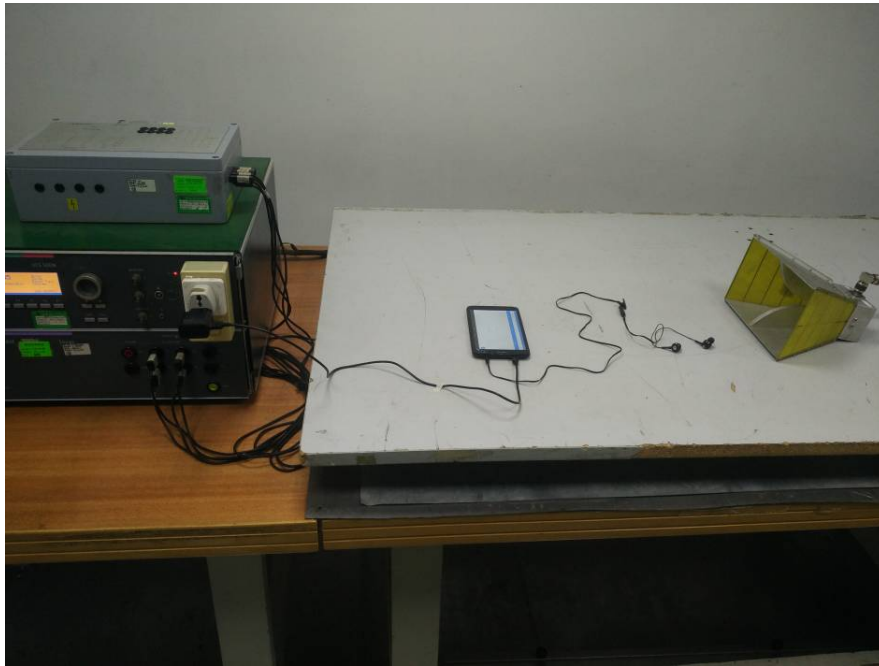
Temperature:	23°C
Relative Humidity:	46 %
ATM Pressure:	101.0 kPa

The testing was performed by Dylan Li on 2017-04-20.

Test mode 1&Test mode 2&Test mode 3&Test mode 4&Test mode 5&Test mode 6&Test mode 7&Test mode 8:

Table 1: AC mains power input port

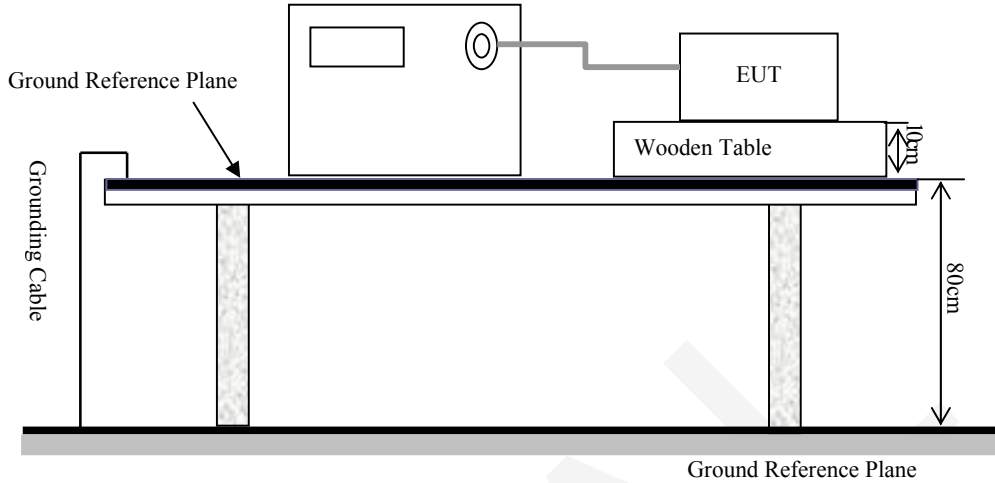
Level	Voltage	Poll	Path	Pass	Fail
1	0.5 kV	±	L1/N	A	/
2	1 kV	±	L1/N	A	/
3	2 kV	±	/	/	/
4	4 kV	±	/	/	/



Test Setup Photo

§7.2 - VOLTAGE DIPS AND INTERRUPTIONS IMMUNITY TEST

Test Setup



Test Standard

ETSI EN 301 489-1 V2.2.0 / EN 61000-4-11: 2004
 Test levels and Performance Criterion

Test Level

Test Level	Voltage dip and short interruptions (% Residual Voltage)	Duration (in period)	Performance criterion:
1	0	0.5	B
2	0	1	B
3	70	25	C
4	0	250	C

Test Procedure

- 1) The interruption is introduced at selected phase angles with specified duration.
- 2) Record any degradation of performance.

Test Data and Setup Photo

Environmental Conditions

Temperature:	25 °C
Relative Humidity:	46 %
ATM Pressure:	101.0 kPa

The testing was performed by Dylan Li on 2017-03-27.

Test mode 1&Test mode 2&Test mode 3&Test mode 4&Test mode 5&Test mode 6&Test mode 7&Test mode 8:

Level	Voltage dip and short interruptions (% Residual Voltage)	Periods	Phase Angle	N	Result
1	0	0.5	0/180	3	A
2	0	1	0/180	3	A
3	70	25	0/180	3	B
4	0	250	0/180	3	B

Note: “B” means “the EUT charging interrupt, can restore automatically”.



Test Setup Photo

EXHIBIT A - EUT PHOTOGRAPHS

EUT – All View



EUT – Front View



EUT – Rear View



EUT – Top View



EUT – Bottom View



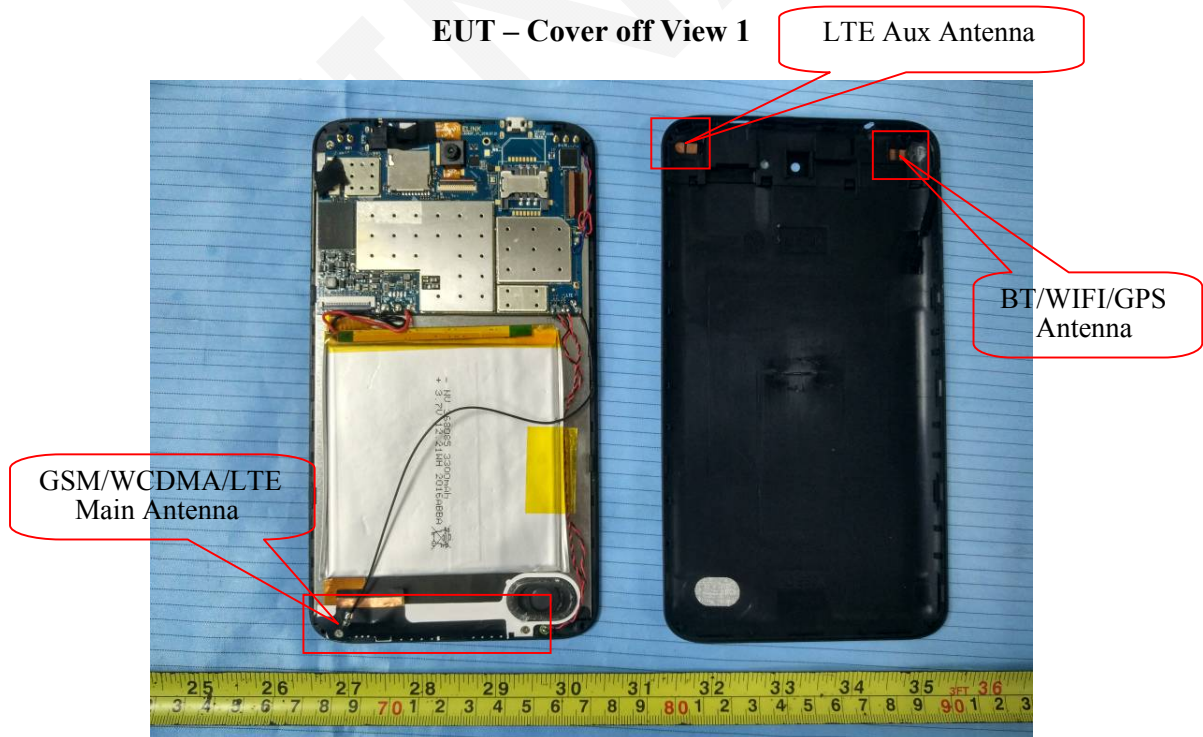
EUT – Left View



EUT – Right View



EUT – Cover off View 1



EUT – Cover off View 2



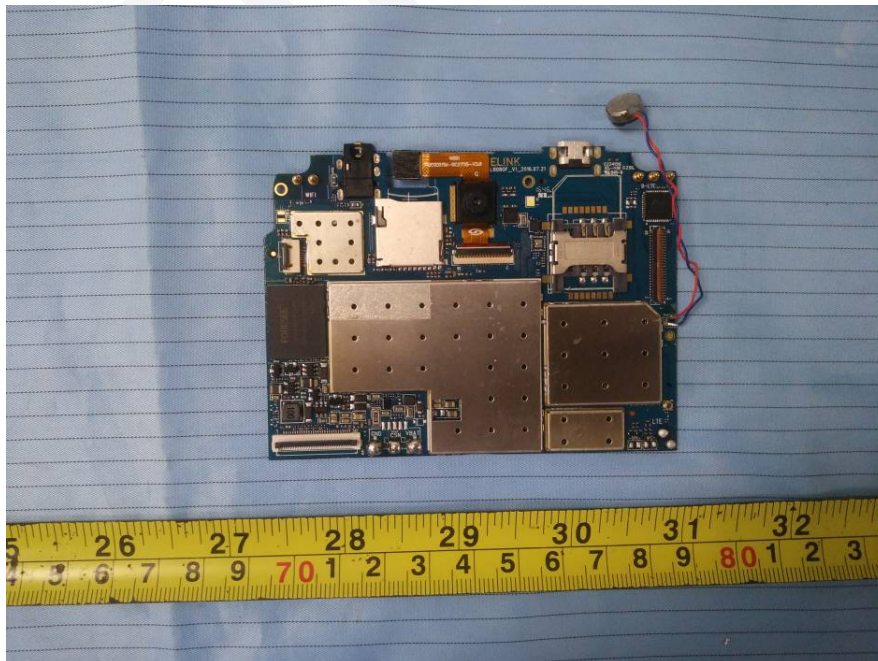
EUT – Cover off View 3



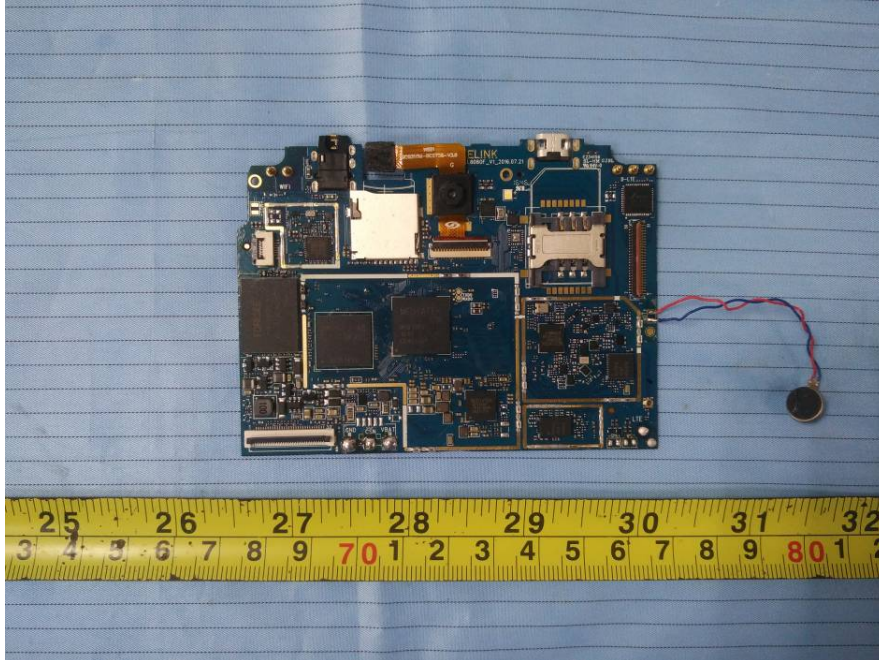
EUT – Cover off View 4



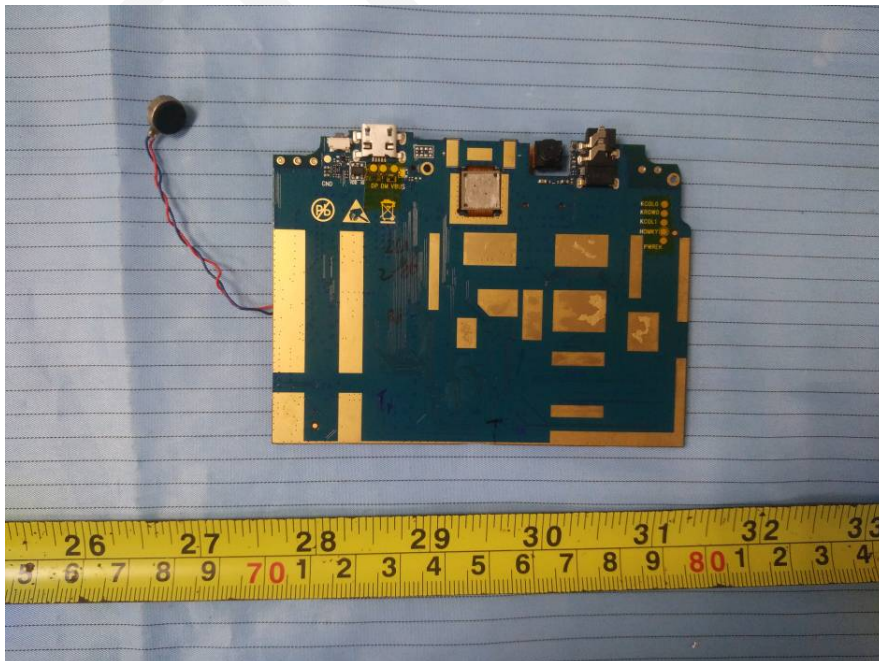
EUT – Main Board Top View



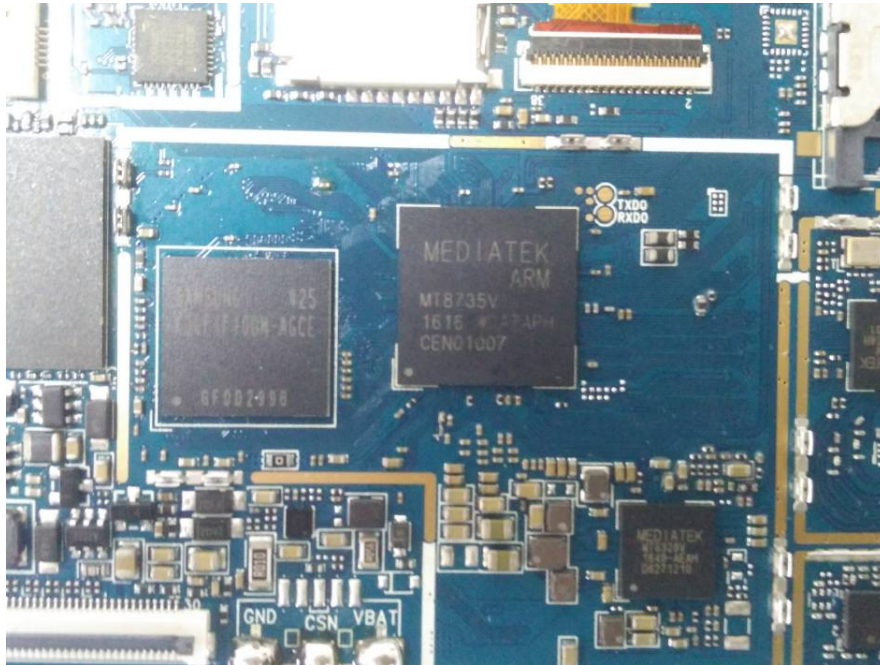
EUT – Main Board Top Shielding off View



EUT –Main Board Bottom View



EUT – IC Chip View



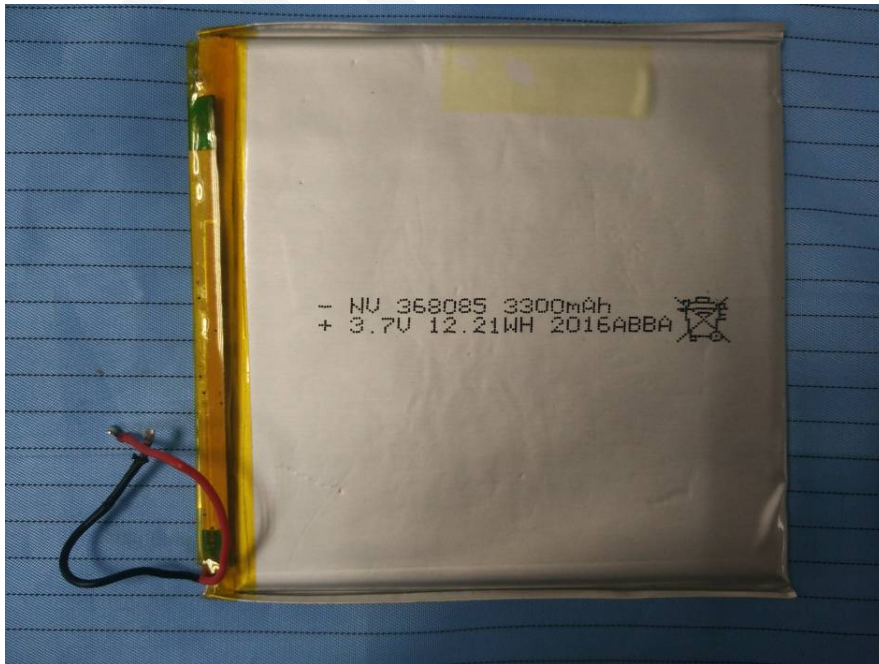
EUT – Adapter View



EUT – Adapter Label View



EUT – Battery Front View

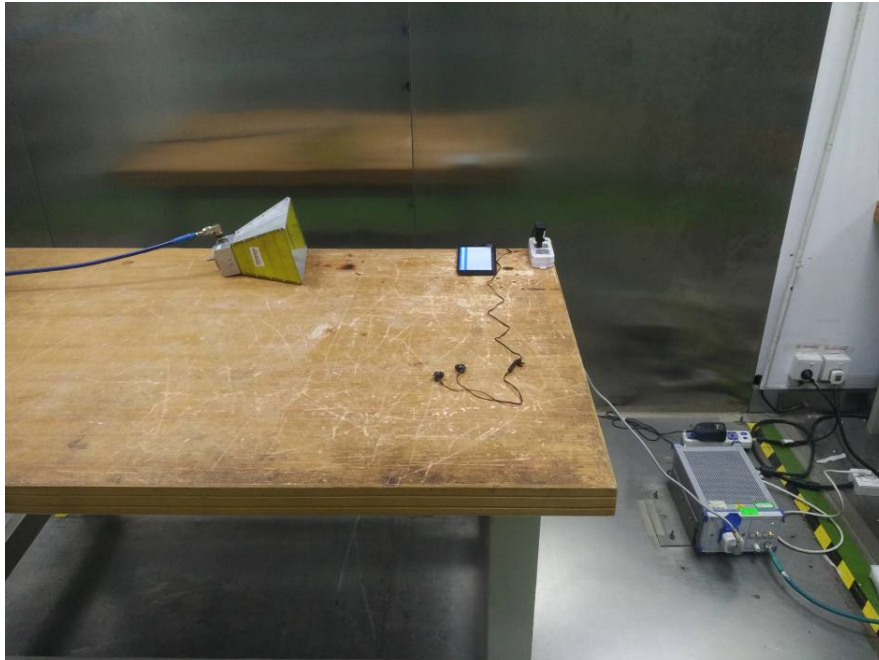


EUT – Battery Rear View

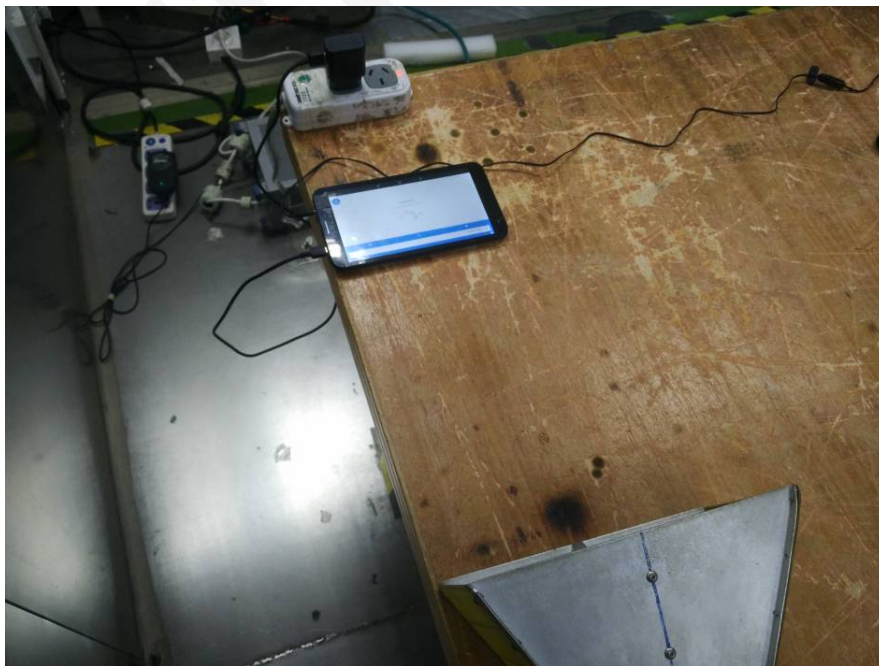


EXHIBIT B – TEST SETUP PHOTOGRAPHS

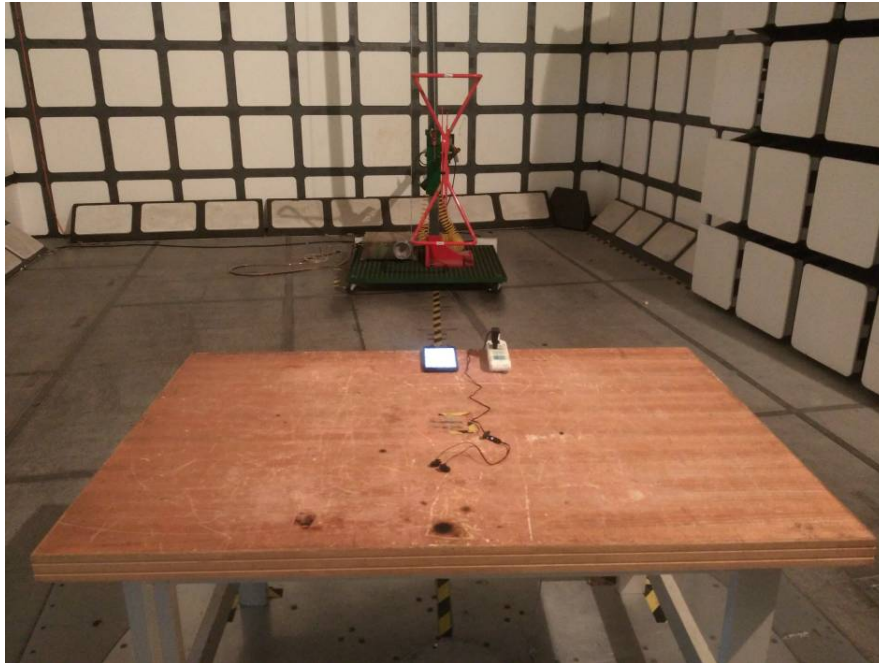
Conducted Emissions - Front View



Conducted Emissions - Side View



Radiated Emissions – Front View (Below 1 GHz)



Radiated Emissions – Rear View (Below 1 GHz)



Radiated Emissions – Front View (Above 1 GHz)



Radiated Emissions – Rear View (Above 1 GHz)



******* END OF REPORT *******