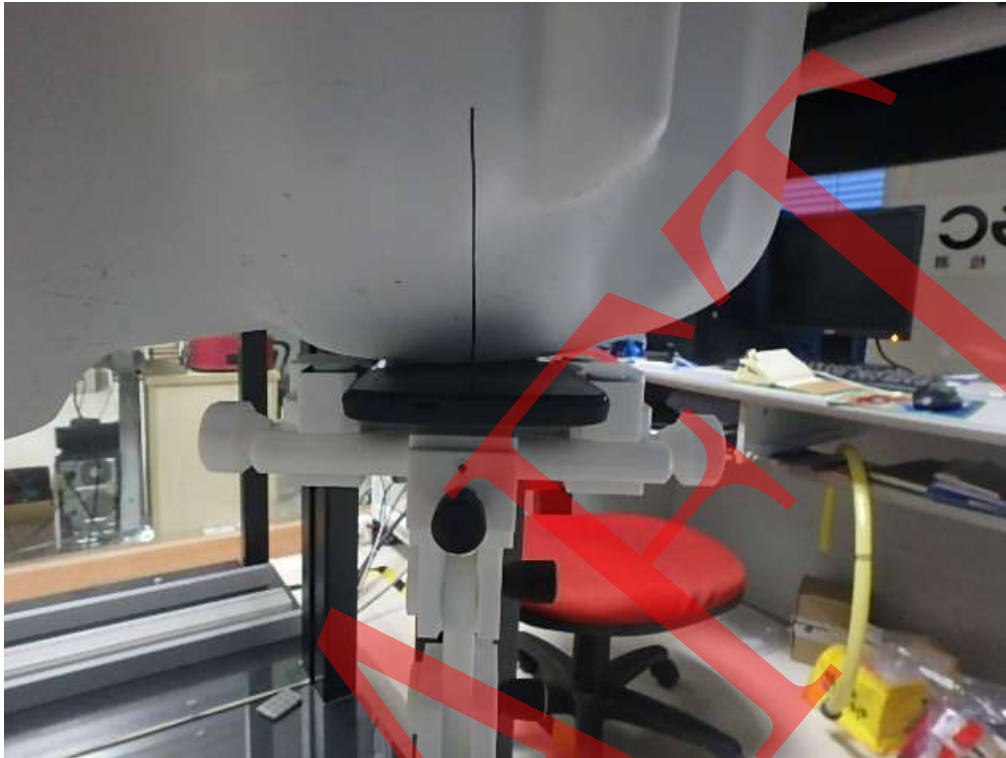


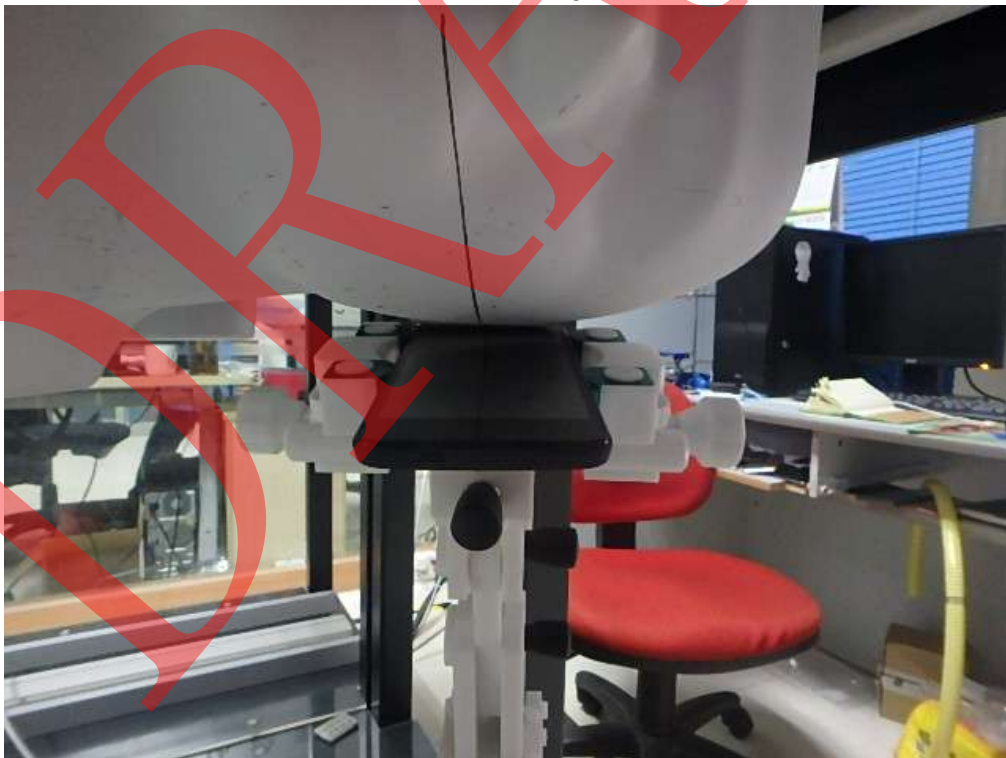
TEST SETUP PHOTOGRAPHS & EUT PHOTOGRAPHS

Test Setup Photographs

LEFT-CHEEK TOUCH



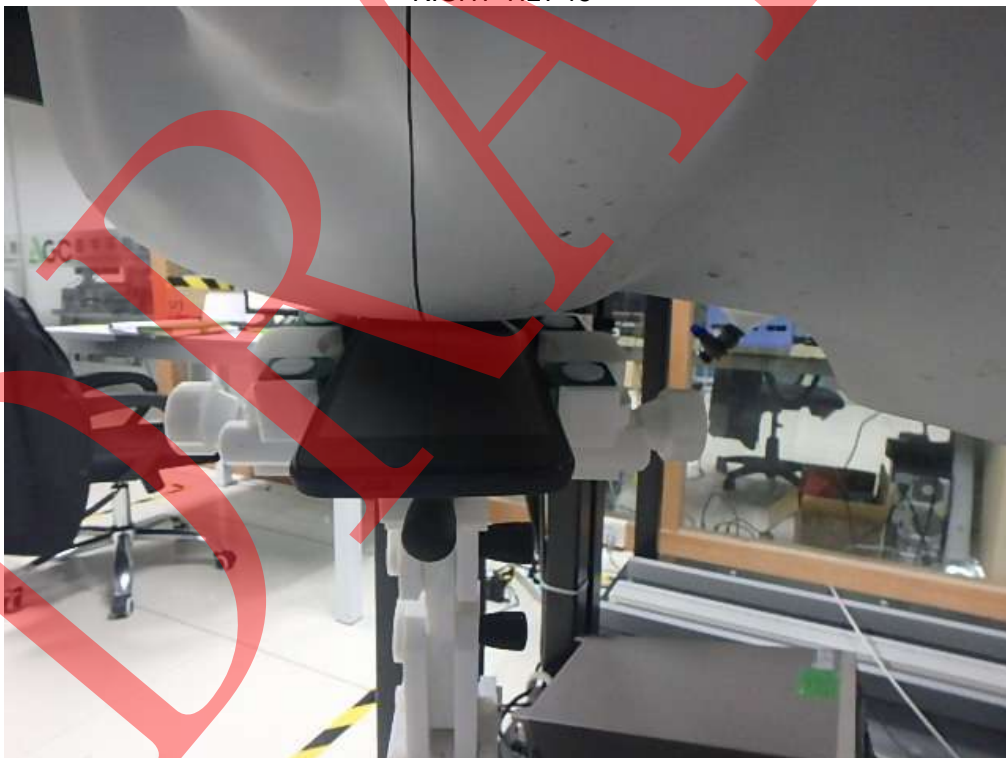
LEFT-TILT 15°



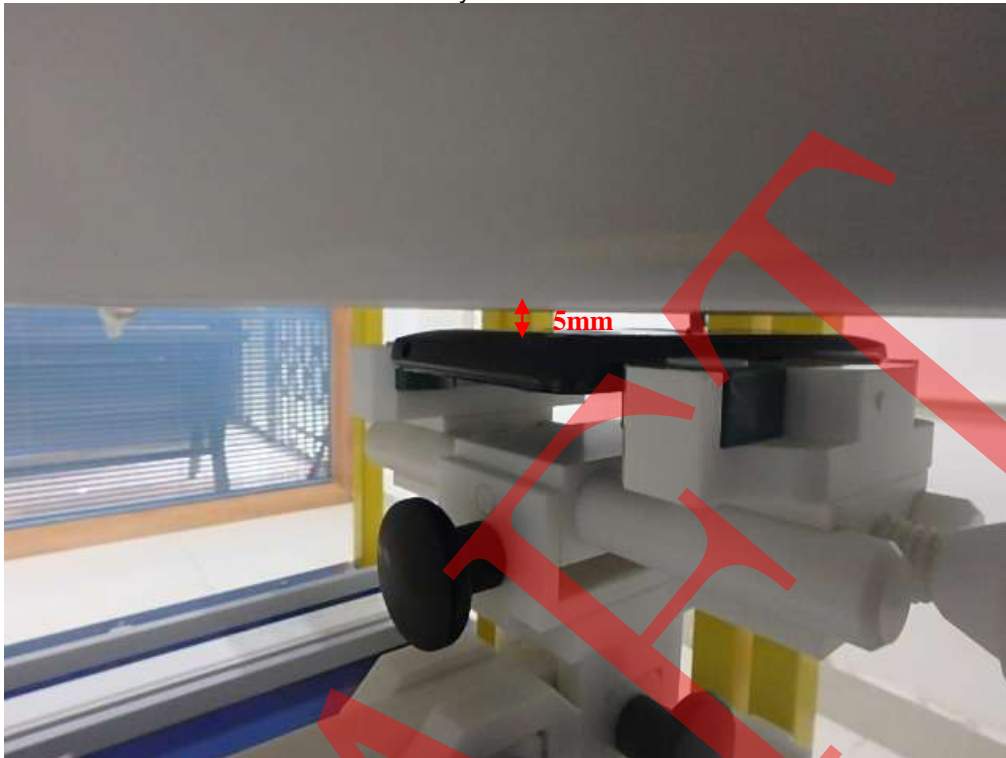
RIGHT- CHEEK TOUCH



RIGHT-TILT 15°



Body Back 5mm



Body Front 5mm



Body back with Headset 5mm

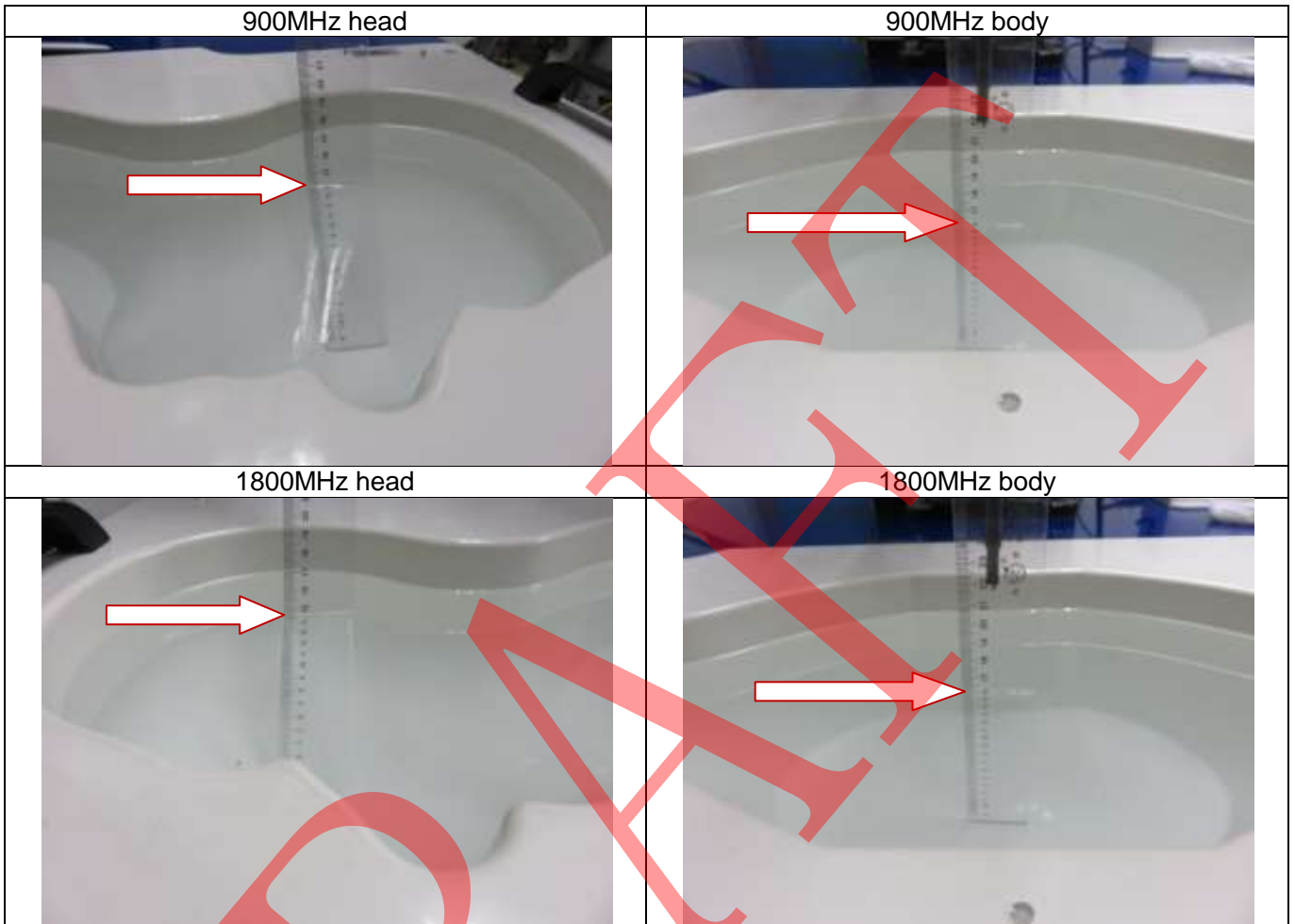


Position of the device under test in relation to the phantom

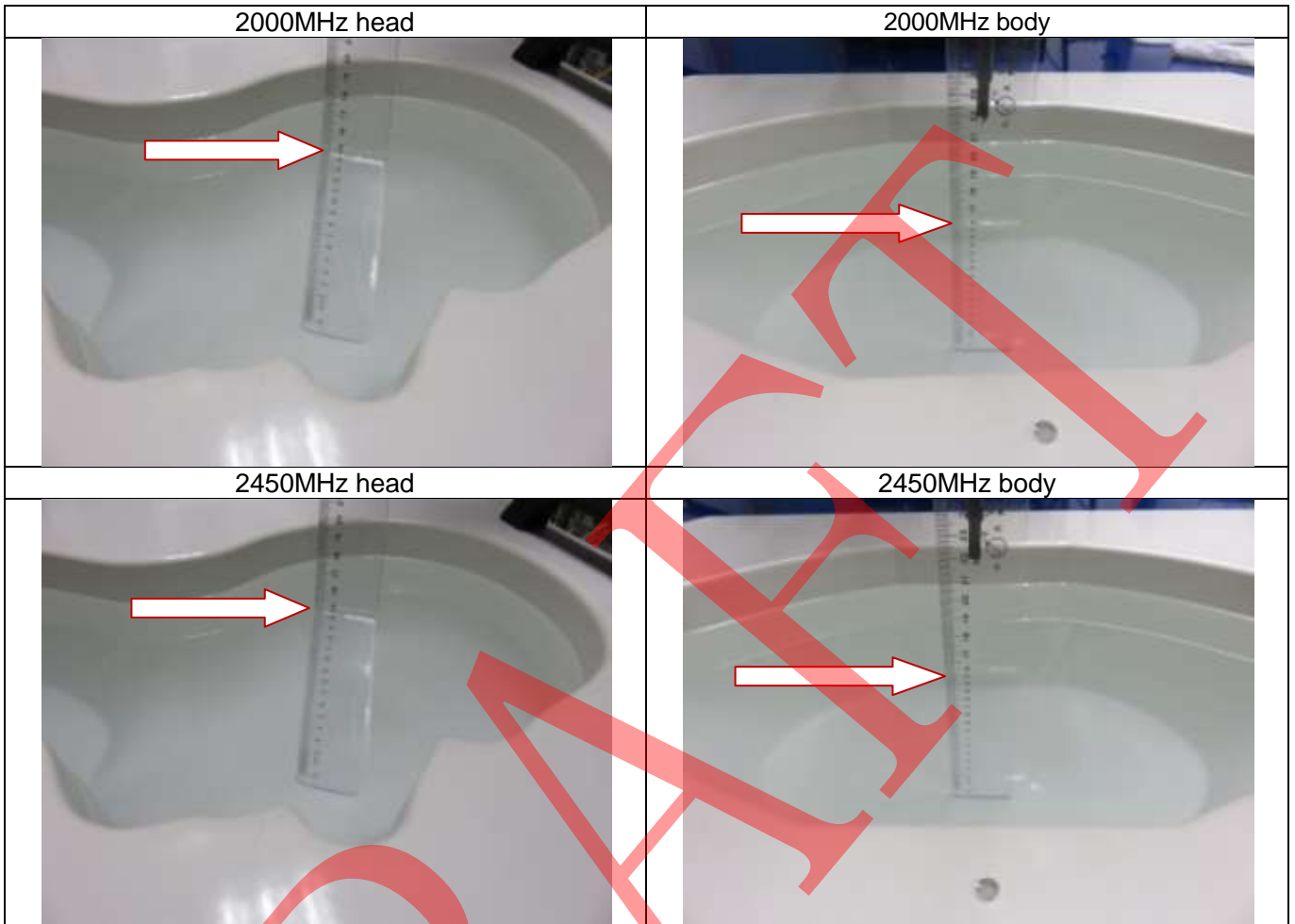


DEPTH OF THE LIQUID IN THE PHANTOM—ZOOM IN

Note : The position used in the measurement were according to IEC/EN62209-1/2



DRAFT



DRAFT

EUT PHOTOGRAPHS
All VIEW OF EUT



TOP VIEW OF EUT



BOTTOM VIEW OF EUT



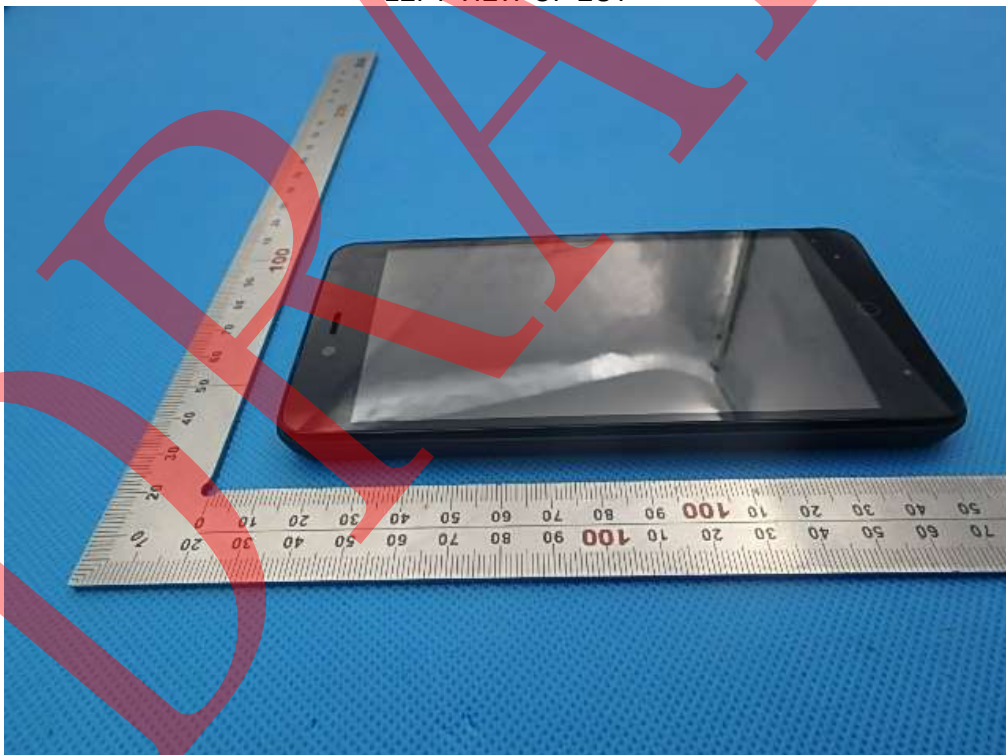
FRONT VIEW OF EUT



BACK VIEW OF EUT



LEFT VIEW OF EUT



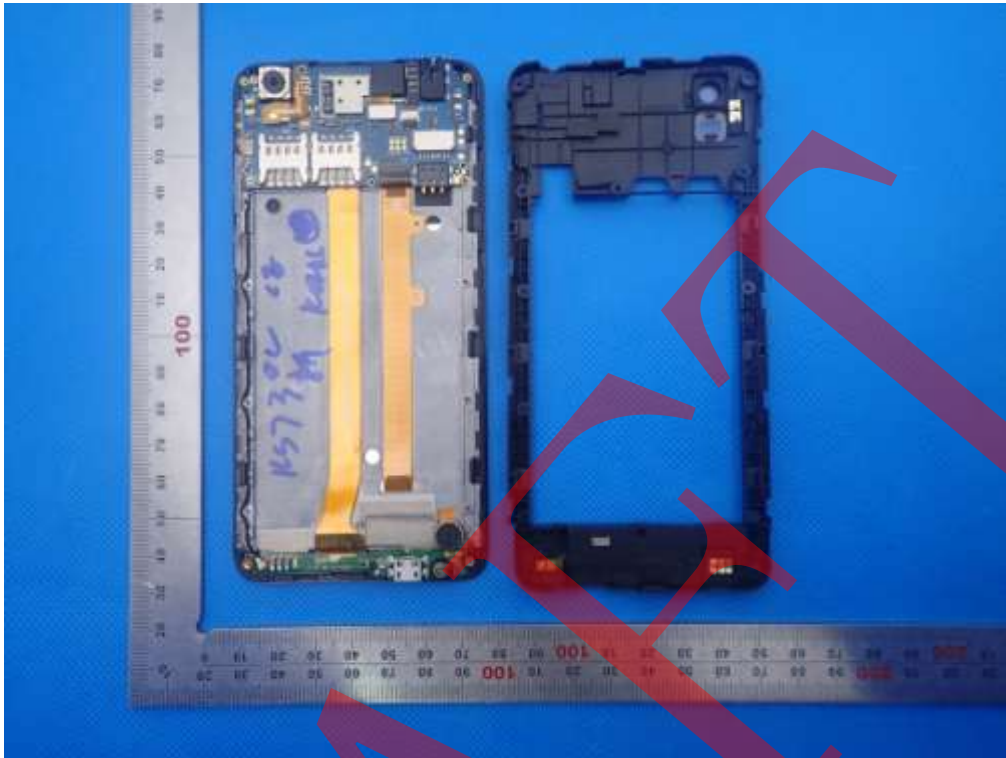
RIGHT VIEW OF EUT



OPEN VIEW OF EUT-1



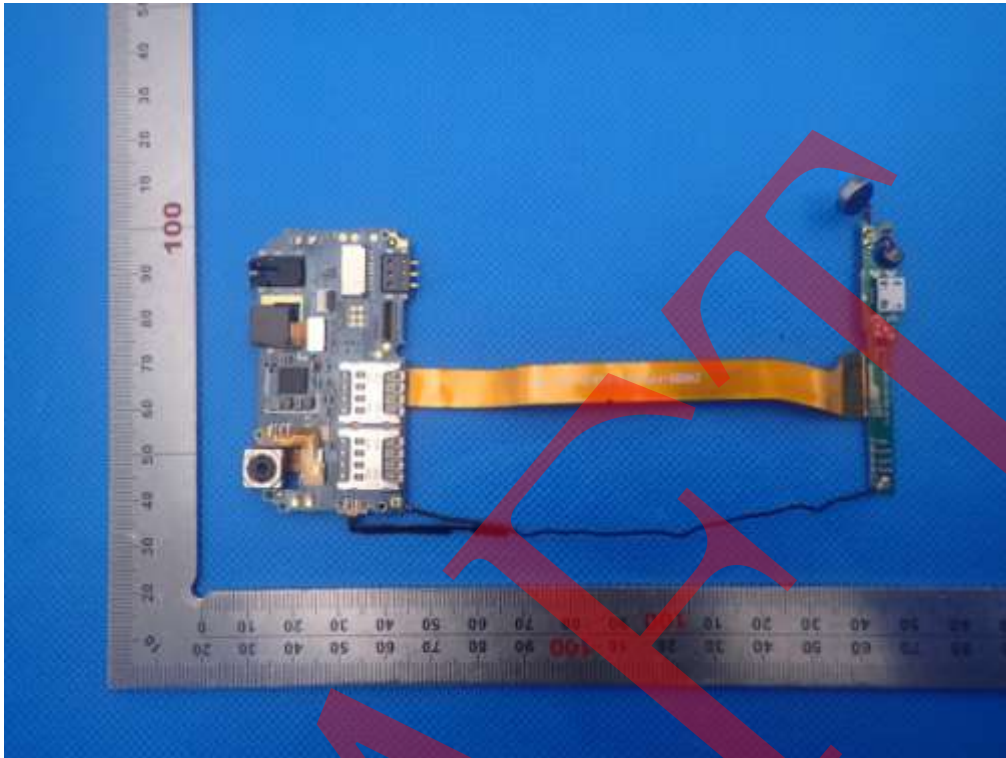
OPEN VIEW OF EUT-2



OPEN VIEW OF EUT-3



INTERNAL VIEW OF EUT-1



INTERNAL VIEW OF EUT-2

