

ETSI EN 301 489-1 V2.2.0 (2017-03)
ETSI EN 301 489-17 V3.2.0 (2017-03)
ETSI EN 301 489-34 V2.1.1 (2017-04)
ETSI EN 301 489-52 V1.1.0 (2016-11)

TEST REPORT

For

Vonino Electronics Limited

Miramar Tower 10F - no1010, 132 Nathan Road Tsim Sha Tsui, Kowloon, Hong Kong

Model: Pluri C8

Report Type: Original Report	Product Type: Tablet PC
Report Number: <u>RSZ170707006-02</u>	
Report Date: <u>2017-08-14</u>	
Reviewed By: <u>Simon Wang</u> RF Engineer	<i>Simon wang</i>
Prepared By: Bay Area Compliance Laboratories Corp. (Shenzhen) 6/F., West Wing, Third Phase of Wanli Industrial Building, Shihua Road, Futian Free Trade Zone, Shenzhen, Guangdong, China Tel: +86-755-33320018 Fax: +86-755-33320008 www.baclcorp.com.cn	

Note: This test report is prepared for the customer shown above and for the equipment described herein. It may not be duplicated or used in part without prior written consent from Bay Area Compliance Laboratories Corp. This report is valid only with a valid digital signature. The digital signature may be available only under the Adobe software above version 7.0.

TABLE OF CONTENTS

GENERAL INFORMATION.....	5
PRODUCT DESCRIPTION FOR EQUIPMENT UNDER TEST (EUT).....	5
OBJECTIVE.....	5
TEST METHODOLOGY.....	5
MEASUREMENT UNCERTAINTY.....	6
TEST FACILITY.....	6
SYSTEM TEST CONFIGURATION.....	7
DESCRIPTION OF TEST CONFIGURATION.....	7
EQUIPMENT MODIFICATIONS.....	7
SUPPORT EQUIPMENT LIST AND DETAILS.....	7
EXTERNAL I/O CABLE.....	7
BLOCK DIAGRAM OF TEST SETUP.....	8
SUMMARY OF TEST RESULTS.....	9
TEST EQUIPMENT LIST.....	10
§7.1 - CONDUCTED EMISSIONS.....	12
EUT SETUP.....	12
EMI TEST RECEIVER SETUP.....	12
TEST PROCEDURE.....	12
CORRECTED FACTOR & MARGIN CALCULATION.....	13
TEST RESULTS SUMMARY.....	13
TEST DATA.....	13
§7.1 - RADIATED EMISSIONS.....	16
TEST SYSTEM SETUP.....	16
EMI TEST RECEIVER SETUP.....	17
TEST PROCEDURE.....	17
CORRECTED AMPLITUDE & MARGIN CALCULATION.....	17
TEST RESULTS SUMMARY.....	17
TEST DATA.....	18
§7.1 - HARMONIC CURRENT EMISSIONS.....	20
§7.1-VOLTAGE FLUCTUATION AND FLICKER.....	21
TEST SYSTEM SETUP.....	21
TEST STANDARD.....	21
TEST DATA AND SETUP PHOTO.....	22
§7.2 - RF ELECTROMAGNETIC FIELD (80-6000MHz).....	24
TEST SYSTEM SETUP.....	24
TEST STANDARD.....	24
TEST PROCEDURE.....	25
TEST DATA AND SETUP PHOTO.....	25
§7.2 - ELECTROSTATIC DISCHARGE.....	28
TEST SYSTEM SETUP.....	28
TEST STANDARD.....	28

TEST PROCEDURE	29
TEST DATA AND SETUP PHOTO	29
§7.2 - ELECTRICAL FAST TRANSIENT IMMUNITY	33
TEST SYSTEM SETUP	33
TEST STANDARD	33
TEST PROCEDURE	33
TEST DATA AND SETUP PHOTO	34
§7.2 - RF COMMON MODE.....	35
TEST SETUP	35
TEST STANDARD	35
TEST PROCEDURE	35
TEST DATA AND SETUP PHOTO	36
§7.2 - SURGES, LINE TO LINE AND LINE TO GROUND	37
TEST SYSTEM SETUP	37
TEST STANDARD	37
TEST PROCEDURE	38
TEST DATA AND SETUP PHOTO	38
§7.2 - VOLTAGE DIPS AND INTERRUPTIONS IMMUNITY TEST	40
TEST SETUP	40
TEST STANDARD	40
TEST PROCEDURE	40
TEST DATA AND SETUP PHOTO	41
EXHIBIT A - PRODUCT CE LABELING.....	42
PROPOSED CE LABEL FORMAT	42
PROPOSED LABEL LOCATION ON EUT	42
EXHIBIT B - EUT PHOTOGRAPHS	43
EUT – ALL VIEW	43
EUT – FRONT VIEW	43
EUT – REAR VIEW	44
EUT – TOP VIEW	44
EUT – BOTTOM VIEW	45
EUT – LEFT VIEW	45
EUT – RIGHT VIEW	46
EUT – COVER OFF VIEW 1	46
EUT – COVER OFF VIEW 2	47
EUT – COVER OFF VIEW 3	47
EUT – MAIN BOARD TOP VIEW	48
EUT – MAIN BOARD TOP SHIELDING OFF VIEW	48
EUT – MAIN BOARD BOTTOM VIEW	49
EUT – MAIN BOARD BOTTOM SHIELDING OFF VIEW	49
EUT – IC 1 VIEW	50
EUT – IC 2 VIEW	50
EUT – ADAPTER FRONT VIEW	51
EUT – ADAPTER REAR VIEW	51
EUT – ADAPTER LABEL VIEW	52
EUT – BATTERY TOP VIEW	52
EUT – BATTERY BOTTOM VIEW	53
EUT – USB CABLE VIEW	53
EXHIBIT C – TEST SETUP PHOTOGRAPHS	54
CONDUCTED EMISSIONS - FRONT VIEW	54

CONDUCTED EMISSIONS - SIDE VIEW	54
RADIATED EMISSIONS – FRONT VIEW (BELOW 1 GHz)	55
RADIATED EMISSIONS – REAR VIEW (BELOW 1 GHz)	55
RADIATED EMISSIONS – FRONT VIEW (ABOVE 1 GHz).....	56
RADIATED EMISSIONS – REAR VIEW (ABOVE 1 GHz)	56

FUNVAL

GENERAL INFORMATION

Product Description for Equipment under Test (EUT)

The *Vonino Electronics Limited's* product, model number: *Pluri C8* in this report is a *Tablet PC*, which was measured approximately: 207 mm (L)×122 mm (W)× 10 mm (H), rated with input voltage: DC 5V from adapter or 3.7V rechargeable Li-ion battery.

Adapter information:

Model: C-2000

Input: AC 100-240V, 50/60Hz 0.3A

Output: DC 5.0V, 2000mA

** All measurement and test data in this report was gathered from production sample serial number: 1701616 (Assigned by BACL, Shenzhen). The EUT supplied by the applicant was received on 2017-07-07.*

Objective

This test report is prepared on behalf of *Vonino Electronics Limited* in accordance with ETSI EN 301 489-17 V3.2.0 (2017-03), ElectroMagnetic Compatibility (EMC) standard for radio equipment and services; Part 17: Specific conditions for Broadband Data Transmission Systems; ETSI EN 301 489-34 V2.1.1 (2017-04), ElectroMagnetic Compatibility (EMC) standard for radio equipment and services; Part 34: Specific conditions for External Power Supply (EPS) for mobile phones; and ETSI EN 301 489-52 V1.1.0 (2016-11), Electromagnetic Compatibility (EMC) standard for radio equipment and services; Part 52: Specific conditions for Cellular Communication Mobile and portable (UE) radio and ancillary equipment; Harmonised Standard covering the essential requirements of article 3.1(b) of Directive 2014/53/EU.

The objective is to determine compliance with ETSI EN 301 489-17 V3.2.0 (2017-03), ETSI EN 301 489-34 V2.1.1 (2017-04) and ETSI EN 301 489-52 V1.1.0 (2016-11).

Test Methodology

All measurements contained in this report were conducted with ETSI EN 301 489-1 V2.2.0 (2017-03).

Measurement Uncertainty

All measurements involve certain levels of uncertainties, especially in field of EMC. The factors contributing to uncertainties are spectrum analyzer, cable loss, antenna factor calibration, antenna directivity, antenna factor variation with height, antenna phase center variation, antenna factor frequency interpolation, measurement distance variation, site imperfections, mismatch (average), and system repeatability.

Based on CISPR 16-4-2:2011, the expanded combined standard uncertainty of test at Bay Area Compliance Laboratories Corp. (Shenzhen) is shown as below. And the uncertainty will be taken into consideration for the test data recorded in the report

Item		Expanded Measurement uncertainty	
Conducted Emissions	AC Mains	2.20 dB (k=2, 95% level of confidence)	
	CAT 3	3.70 dB (k=2, 95% level of confidence)	
	CAT 5	3.86 dB (k=2, 95% level of confidence)	
	CAT 6	4.64 dB (k=2, 95% level of confidence)	
Radiated emission	30MHz~200MHz	Horizontal	4.58 dB (k=2, 95% level of confidence)
		Vertical	4.59 dB (k=2, 95% level of confidence)
	200MHz~1 GHz	Horizontal	4.83 dB (k=2, 95% level of confidence)
		Vertical	5.85 dB (k=2, 95% level of confidence)
	1 GHz~6 GHz	Horizontal/Vertical	4.08 dB (k=2, 95% level of confidence)
	Above 6 GHz	Horizontal/Vertical	4.59 dB (k=2, 95% level of confidence)

Test Facility

The Test site used by Bay Area Compliance Laboratories Corp. (Shenzhen) to collect test data is located on the 6/F., West Wing, Third Phase of Wanli Industrial Building, Shihua Road, Futian Free Trade Zone, Shenzhen, Guangdong, China.

Bay Area Compliance Laboratories Corp. (Shenzhen) has been accredited to ISO/IEC 17025 by CNAS(Lab code: L2408). And accredited to ISO/IEC 17025 by NVLAP(Lab code: 200707-0), the FCC Designation No. CN5001 under the KDB 974614 D01.

The Federal Communications Commission has the reports on file and is listed under FCC Registration No.: 382179. The test site has been approved by the FCC for public use and is listed in the FCC Public Access Link (PAL) database.

Bay Area Compliance Laboratories Corp. (Shenzhen) was registered with ISED Canada under ISED Canada Registration Number 3062B.

SYSTEM TEST CONFIGURATION

Description of Test Configuration

The system was configured for testing in a typical fashion (as normally used by a typical user)

EUT Operation Mode 1: Bluetooth Transmitting (working and monitoring with CMW500)

EUT Operation Mode 2: Wi-Fi Transmitting (working and monitoring with Wireless Router)

EUT Operation Mode 3: GSM/DCS Transmitting (working and monitoring with CMU 200 & sound analyser)

EUT Operation Mode 4: WCDMA Transmitting (working and monitoring with CMU 200)

EUT Operation Mode 5: Charging & Playing

Equipment Modifications

No modifications were made to the EUT.

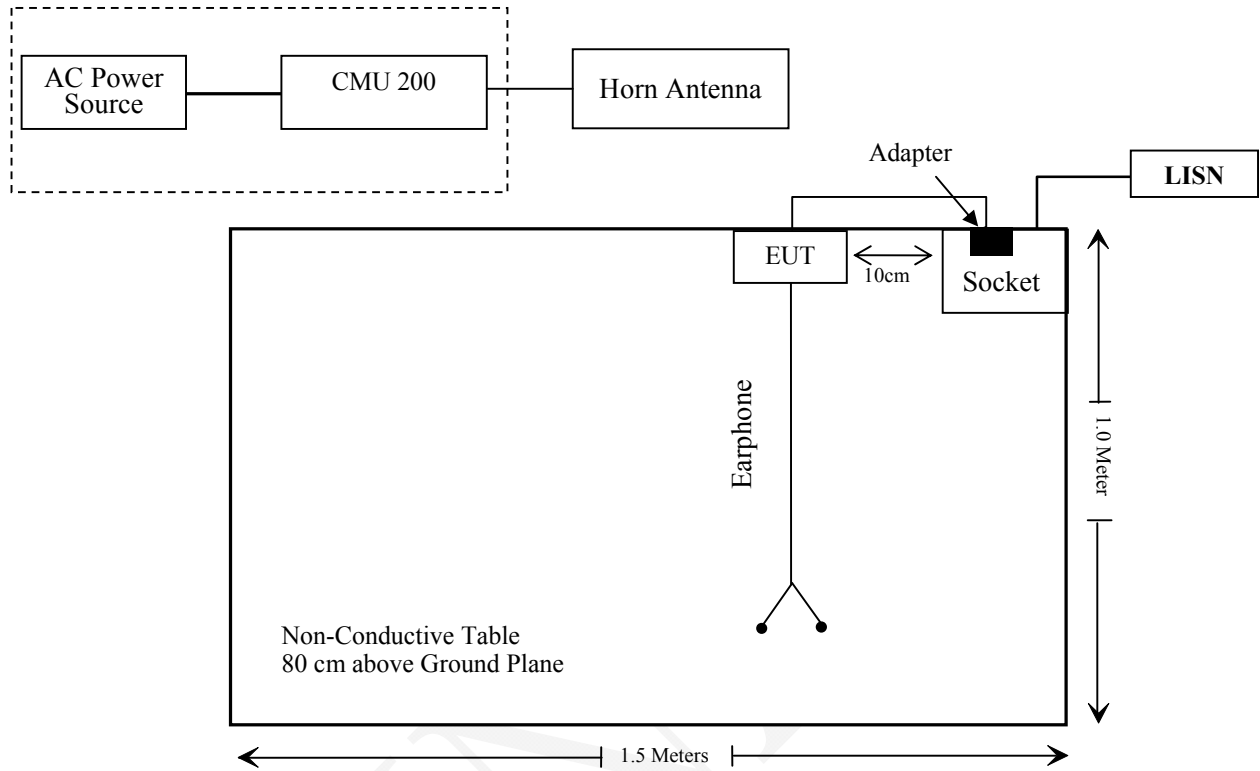
Support Equipment List and Details

Manufacturer	Description	Model	Serial Number
Rohde & Schwarz	Universal Radio Communication Tester	CMU200	106891
Rohde & Schwarz	Wideband Radio Communication Tester	CMW500	1201.002K50-146520-wh

External I/O Cable

Cable Description	Length (m)	From/Port	To
Un-shielding Detachable USB Cable	1.0	EUT	Adapter
Un-shielding Detachable Earphone Cable	1.2	EUT	Earphone

Block Diagram of Test Setup



SUMMARY OF TEST RESULTS

Rules	Description of Test	Result
§7.1	Reference to clauses EN 301 489-1 §8.4 AC mains power input/output ports	Compliance
	Reference to clauses EN 301 489-1 §8.3 DC power input/output ports	Not Applicable
	Reference to clauses EN 301 489-1 §8.2 Enclosure of ancillary equipment measured on a stand alone basis	Compliance
	Reference to clauses EN 301 489-1 §8.5 Harmonic current emissions (AC mains input port)	Compliance
	Reference to clauses EN 301 489-1 §8.6 Voltage fluctuations and flicker (AC mains input port)	Compliance
	Reference to clauses EN 301 489-1 §8.7 Wired network ports	Not Applicable
§7.2	Reference to clauses EN 301 489-1 §9.2 Radio frequency electromagnetic field (80 MHz to 6 000 MHz)(EN 61000-4-3)	Compliance
	Reference to clauses EN 301 489-1 §9.3 Electrostatic discharge (EN 61000-4-2)	Compliance
	Reference to clauses EN 301 489-1 §9.4 Fast transients, common mode (EN 61000-4-4)	Compliance
	Reference to clauses EN 301 489-1 §9.5 Radio frequency, common mode (EN 61000-4-6)	Compliance
	Reference to clauses EN 301 489-1 §9.6 Transients and surges in the vehicular environment (ISO 7637-2)	Not Applicable
	Reference to clauses EN 301 489-1 §9.8 Surges (EN 61000-4-5)	Compliance
	Reference to clauses EN 301 489-1 §9.7 Voltage dips and interruptions (EN 61000-4-11)	Compliance

Not Applicable: Please refer to Applicability overview tables in sections 7.1 and 7.2 of EN 301 489-1 requirements for Radio and ancillary equipment.

TEST EQUIPMENT LIST

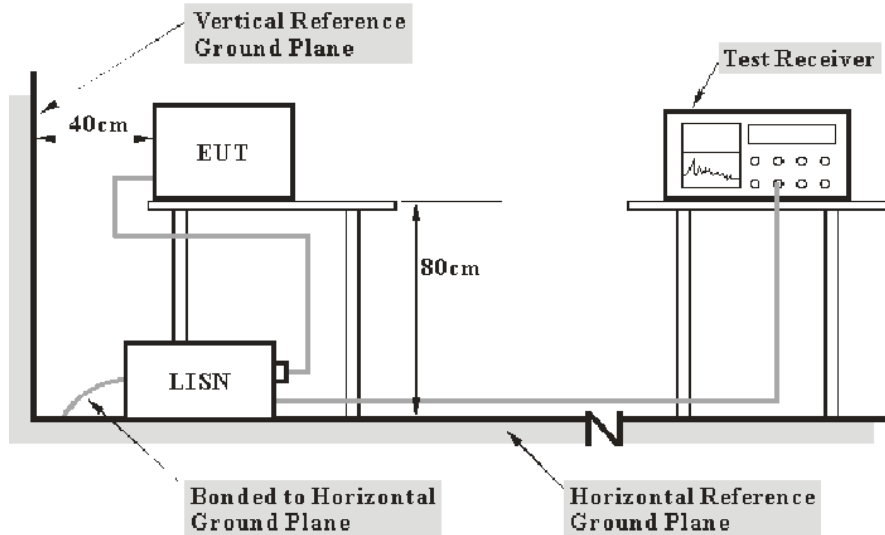
Manufacturer	Description	Model	Serial Number	Calibration Date	Calibration Due Date
EMI					
Rohde & Schwarz	EMI Test Receiver	ESCS30	100176	2016-10-19	2017-10-19
Rohde & Schwarz	LISN	ENV216	3560.6650.12-101613-Yb	2016-12-07	2017-12-07
Rohde & Schwarz	Transient Limiter	ESH3Z2	DE25985	2017-02-14	2017-08-15
Rohde & Schwarz	CE Test software	EMC 32	V8.53.0	NCR	NCR
TDK	Chamber	Chamber A	2#	2016-12-05	2019-12-05
HP	Amplifier	HP8447E	1937A01046	2017-05-12	2017-11-13
Rohde & Schwarz	EMI Test Receiver	ESCI	101120	2016-12-07	2017-12-07
Sunol Sciences	Bi-log Antenna	JB1	A040904-2	2014-12-17	2017-12-16
BIZI	Signal Analyzer	FSEM	845987/005	2017-04-24	2018-04-24
Mini	Pre-Amplifier	ZVA-183-S+	5969001149	2017-02-14	2018-02-14
A.H.System	Horn Antenna	SAS-200/571	135	2015-08-18	2018-08-17
TDK	Chamber	Chamber B	1#	2016-12-06	2019-12-06
Rohde & Schwarz	Auto test Software	EMC32	V9.10	NCR	NCR
EM Test	Harmonic/Flicker Analyzer	DPA 500N	V0939105176	2016-12-06	2017-12-06
EM Test	AC Source	ACS500	303276	2016-12-06	2017-12-06
EM Test	Test Software	DPA. Control	V5.0.3.0	NCR	NCR

Manufacturer	Description	Model	Serial Number	Calibration Date	Calibration Due Date
EMS					
SCHAFFNER	ESD Tester	NSG 438	1476	2016-07-13	2017-07-13
EM Test	EMS Combination Tester	UCS 500 N5	V0939105172	2016-12-06	2017-12-06
EM Test	AC Source	MV2616	V0939105173	2016-12-06	2017-12-06
EM Test	Test Software	IEC. Control	V5.0.9.0	NCR	NCR
Krohn-hite	Audio Filter	3940	003096	NCR	NCR
Agilent	Signal Generator	8665B	3744A01692	2017-01-12	2018-01-12
A&R	Power Amplifier	500W100B	0348446	NCR	NCR
A&R	Power Amplifier	60S1G6	0348712	NCR	NCR
A&R	RF Power Amplifier	15A250	13444	NCR	NCR
EMCO	Horn Antenna	3115	9903-5766	NCR	NCR
Sunol Sciences	Bi-log Antenna	JB1	A040904-1	NCR	NCR
BACL	Sound detecting Holder	N/A	N/A	NCR	NCR
Rohde & Schwarz	Audio Analyzer	UPV	1146.2003K02 -101782-XP	2017-05-09	2018-05-09
ETS	Fully Anechoic Chamber	/	/	2016-05-26	2019-05-26
/	6dB Attenuator	/	/	2016-12-15	2017-12-14
HP	Signal Generator	8657A	3217A04699	2016-12-18	2017-12-17
COM-POWER	CDN	M325E	521145	2017-02-27	2018-02-27

* **Statement of Traceability:** Bay Area Compliance Laboratories Corp. (Shenzhen) attests that all calibrations have been performed in accordance to requirements that traceable to National Primary Standards and International System of Units (SI).

§7.1 - CONDUCTED EMISSIONS

EUT Setup



- Note: 1. Support units were connected to second LISN.
 2. Both of LISNs (AMN) 80 cm from EUT and at the least 80 cm from other units and other metal planes support units.

The setup of EUT is according with per EN 301 489-1 measurement procedures. The specification used was with the EN 301 489-1 limits.

The external I/O cables were draped along the test table and formed a bundle 30 to 40 cm long in the middle.

The spacing between the peripherals was 10 cm.

EMI Test Receiver Setup

The EMI test receiver was set to investigate the spectrum from 150 kHz to 30 MHz.

During the conducted emission test, the EMI test receiver was set with the following configurations:

Frequency Range	IF B/W
150 kHz – 30 MHz	9 kHz

Test Procedure

Maximizing procedure was performed on the six (6) highest emissions of the EUT.

All final data was recorded in the Quasi-peak and average detection mode.

Corrected Factor & Margin Calculation

The Corrected factor is calculated by adding LISN/ISN VDF (Voltage Division Factor), Cable Loss and Transient Limiter Attenuation. The basic equation is as follows:

Correction Factor = LISN VDF + Cable Loss + Transient Limiter Attenuation

The “**Margin**” column of the following data tables indicates the degree of compliance with the applicable limit. For example, a margin of 7 dB means the emission is 7 dB below the limit. The equation for margin calculation is as follows:

$$\text{Margin} = \text{Limit} - \text{Corrected Amplitude}$$

Test Results Summary

According to the recorded data in following table, the EUT complied with the EN 301489-1,

Refer to CISPR16-4-2:2011 and CISPR 16-4-1:2009, the measured level is in compliance with the limit if

$$L_m + U_{(L_m)} \leq L_{\text{lim}} + U_{\text{cispr}}$$

In BACL, $U_{(L_m)}$ is less than U_{cispr} , if L_m is less than L_{lim} , it implies that the EUT complies with the limit.

Test Data

Environmental Conditions

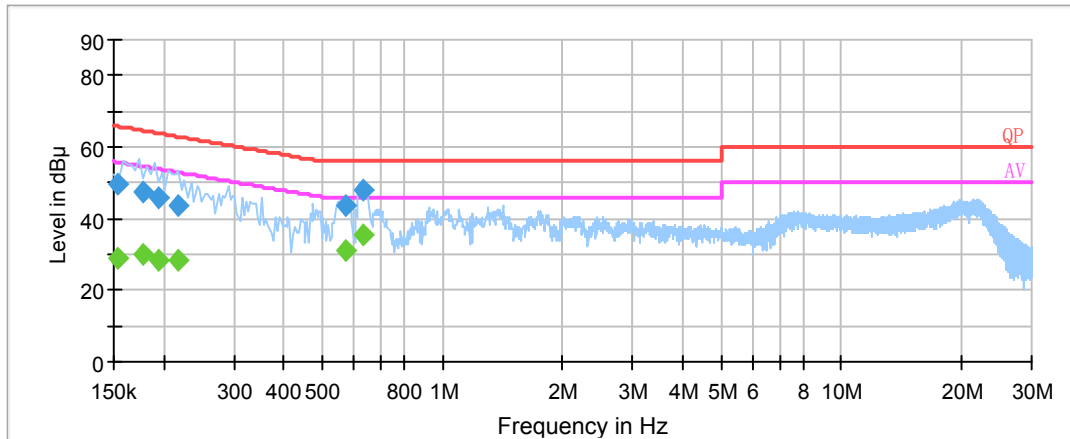
Temperature:	24 °C
Relative Humidity:	48 %
ATM Pressure:	101.0 kPa

The testing was performed by Kobe Li on 2017-08-03.

EUT Operation Mode 3(worst case)

AC 230 V/ 50 Hz, Line:

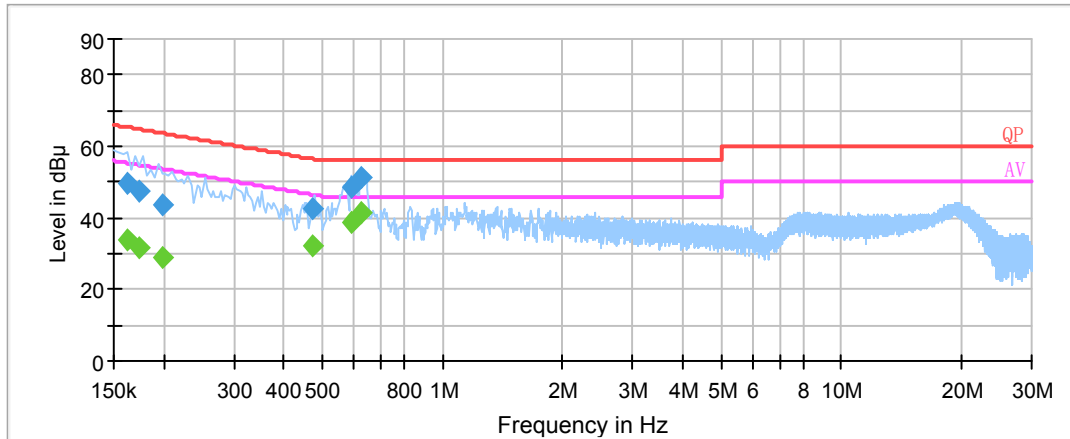
EMI Auto Test L



Frequency (MHz)	Corrected Amplitude (dBµV)	Corrected Factor (dB)	Limit (dBµV)	Margin (dB)	Remark (PK/ QP/Ave.)
0.153500	49.5	20.2	65.8	16.3	QP
0.178500	47.2	20.2	64.6	17.4	QP
0.194500	45.6	20.2	63.8	18.2	QP
0.217500	43.8	20.2	62.9	19.1	QP
0.569390	43.5	20.1	56.0	12.5	QP
0.631330	48.3	20.1	56.0	7.7	QP
0.153500	28.9	20.2	55.8	26.9	Ave.
0.178500	29.9	20.2	54.6	24.7	Ave.
0.194500	28.4	20.2	53.8	25.4	Ave.
0.217500	28.1	20.2	52.9	24.8	Ave.
0.569390	31.0	20.1	46.0	15.0	Ave.
0.631330	35.6	20.1	46.0	10.4	Ave.

AC 230 V/ 50 Hz, Neutral:

EMI Auto Test N



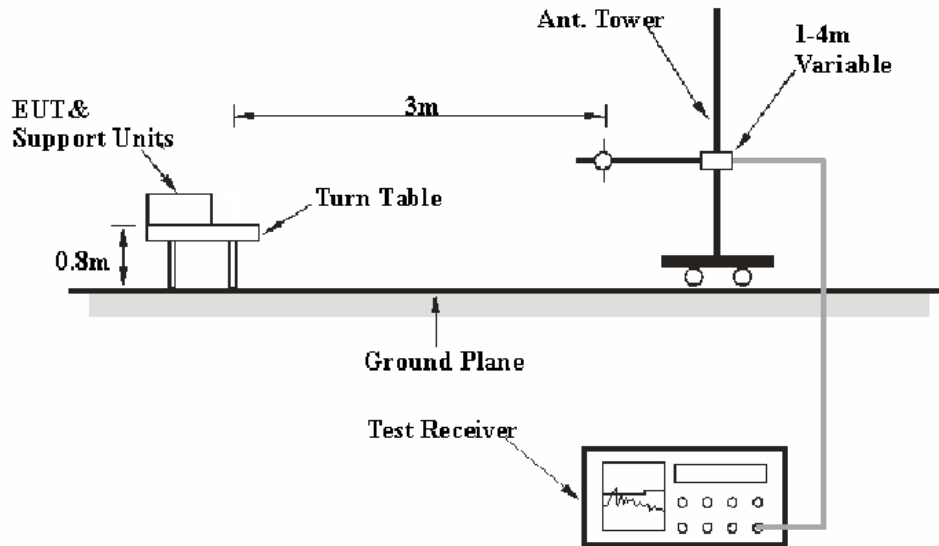
Frequency (MHz)	Corrected Amplitude (dBµV)	Corrected Factor (dB)	Limit (dBµV)	Margin (dB)	Remark (PK/ QP/Ave.)
0.161500	49.7	20.2	65.4	15.7	QP
0.173500	47.6	20.2	64.8	17.2	QP
0.198500	43.8	20.2	63.7	19.9	QP
0.470830	42.4	20.2	56.5	14.1	QP
0.593090	48.8	20.1	56.0	7.2	QP
0.624490	51.3	20.1	56.0	4.7	QP
0.161500	34.1	20.2	55.4	21.3	Ave.
0.173500	31.8	20.2	54.8	23.0	Ave.
0.198500	28.7	20.2	53.7	25.0	Ave.
0.470830	31.9	20.2	46.5	14.6	Ave.
0.593090	38.6	20.1	46.0	7.4	Ave.
0.624490	41.2	20.1	46.0	4.8	Ave.

Note:

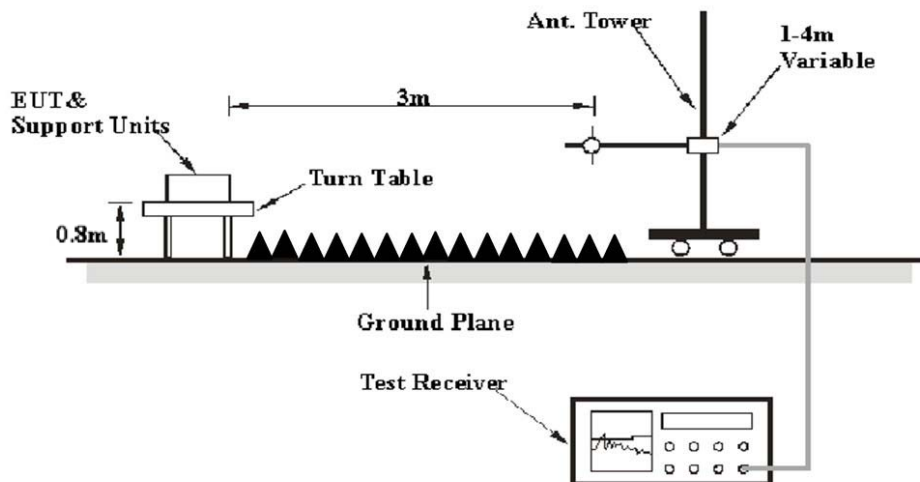
- 1) Correction Factor = LISN/ISN VDF (Voltage Division Factor) + Cable Loss + Transient Limiter Attenuation
- 2) Corrected Amplitude = Reading + Correction Factor
- 3) Margin = Limit – Corrected Amplitude

§7.1 - RADIATED EMISSIONS

Test System Setup



Above 1GHz:



The radiated emission tests were performed in the 3 meters chamber test site, using the setup accordance with the CISPR 16-1-4:2012, CISPR 16-2-3:2010. The limit was specified in EN 301 489-1.

The external I/O cables were draped along the test table and formed a bundle 30 to 40 cm long in the middle.

The spacing between the peripherals was 10 cm.

EMI Test Receiver Setup

The system was investigated from 30 MHz to 6 GHz.

During the radiated emission test, the EMI test receiver Setup was set with the following configurations:

Frequency Range	RBW	Video B/W	IF B/W	Detector
30 MHz – 1000 MHz	100 kHz	300 kHz	120 kHz	QP
1 GHz – 6 GHz	1 MHz	3 MHz	-	Peak
1 GHz – 6 GHz	1 MHz	3 MHz	-	Average

Test Procedure

Maximizing procedure was performed on the highest emissions to ensure that the EUT complied with all installation combinations.

All final data was recorded in the Quasi-peak detection mode for below 1 GHz, and Peak and Average for above 1 GHz.

Corrected Amplitude & Margin Calculation

The Corrected Amplitude is calculated by adding the Antenna Factor and Cable Loss, and subtracting the Amplifier Gain from the Meter Reading. The basic equation is as follows:

$$\text{Corrected Amplitude} = \text{Meter Reading} + \text{Antenna Factor} + \text{Cable Loss} - \text{Amplifier Gain}$$

The “**Margin**” column of the following data tables indicates the degree of compliance with the applicable limit. For example, a margin of 7 dB means the emission is 7 dB below the limit for Class B. The equation for margin calculation is as follows:

$$\text{Margin} = \text{Limit} - \text{Corrected Amplitude.}$$

Test Results Summary

According to the recorded data in following table, the EUT complied with the EN 301489-1,

Refer to CISPR16-4-2:2011 and CISPR 16-4-1:2009, the measured level is in compliance with the limit if

$$L_m + U_{(Lm)} \leq L_{lim} + U_{cispr}$$

In BACL, $U_{(Lm)}$ is less than U_{cispr} , if L_m is less than L_{lim} , it implies that the EUT complies with the limit.

Test Data

Environmental Conditions

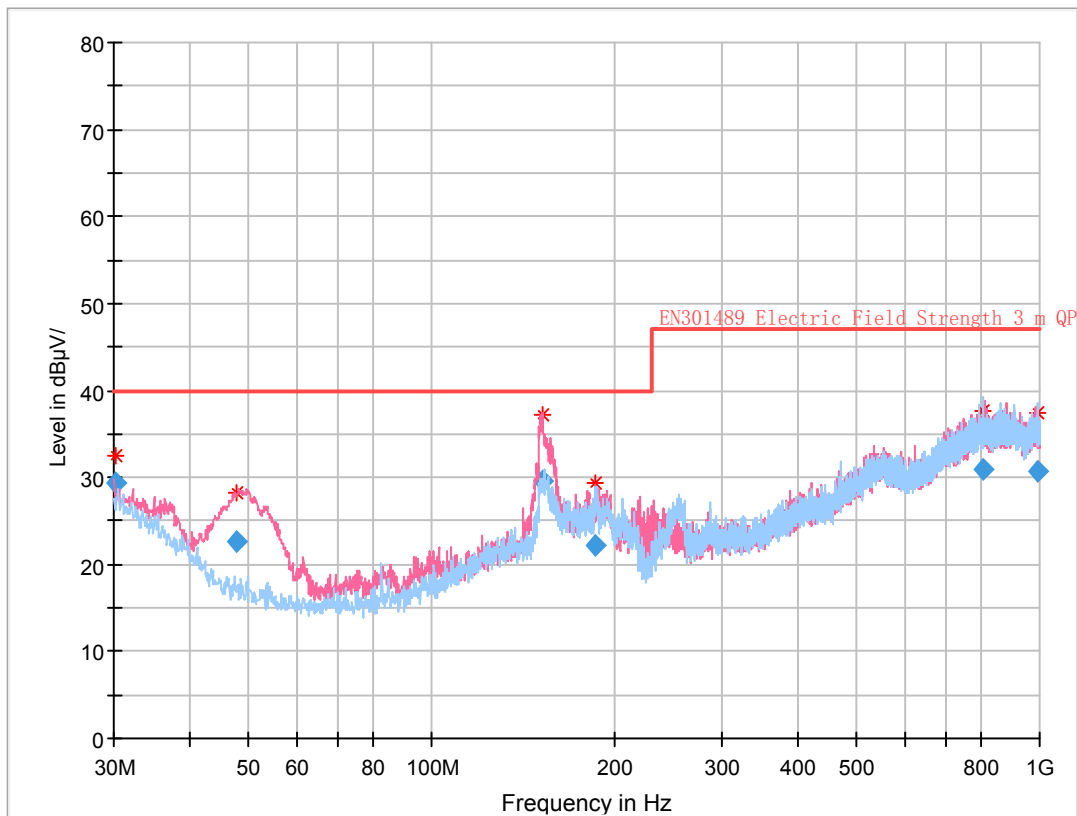
Temperature:	24 °C
Relative Humidity:	48 %
ATM Pressure:	101.0 kPa

The testing was performed by Kobe Li on 2017-08-07.

EUT Operation Mode 5:

30 MHz-1 GHz:

Full Spectrum



Frequency (MHz)	Corrected Amplitude (dB μ V/m)	Antenna height (cm)	Antenna Polarity	Turntable position (degree)	Correction Factor (dB/m)	Limit (dB μ V/m)	Margin (dB)
30.129625	29.36	115.0	V	331.0	0.2	40.00	10.64
47.809125	22.66	107.0	V	222.0	-10.5	40.00	17.34
152.099875	29.58	106.0	V	306.0	-4.6	40.00	10.42
186.068125	22.08	105.0	V	42.0	-5.6	40.00	17.92
808.118000	30.88	359.0	H	217.0	9.0	47.00	16.12
995.336250	30.74	169.0	H	340.0	9.9	47.00	16.26

Above 1 GHz:

Frequency (MHz)	Receiver		Turntable Degree	Rx Antenna		Corrected Factor (dB)	Corrected Amplitude (dB μ V/m)	EN301489-1	
	Reading (dB μ V)	Detector (PK/QP/Ave.)		Height (m)	Polar (H/V)			Limit (dB μ V/m)	Margin (dB)
1268.67	48.64	PK	23	1.0	H	-8.04	40.60	70	29.40
1268.67	31.85	Ave.	23	1.0	H	-8.04	23.81	50	26.19
1336.81	46.88	PK	225	1.1	V	-8.04	38.84	70	31.16
1336.81	31.34	Ave.	225	1.1	V	-8.04	23.30	50	26.70
2394.50	44.18	PK	240	1.7	H	-0.88	43.30	70	26.70
2394.50	30.55	Ave.	240	1.7	H	-0.88	29.67	50	20.33
2410.68	43.50	PK	222	1.8	V	-0.88	42.62	70	27.38
2410.68	30.52	Ave.	222	1.8	V	-0.88	29.64	50	20.36

Note:

- 1) Corrected Amplitude = Meter Reading + Correction Factor
- 2) Correction Factor = Antenna Factor + Cable Loss - Amplifier Gain
- 3) Margin = Limit - Corrected Amplitude

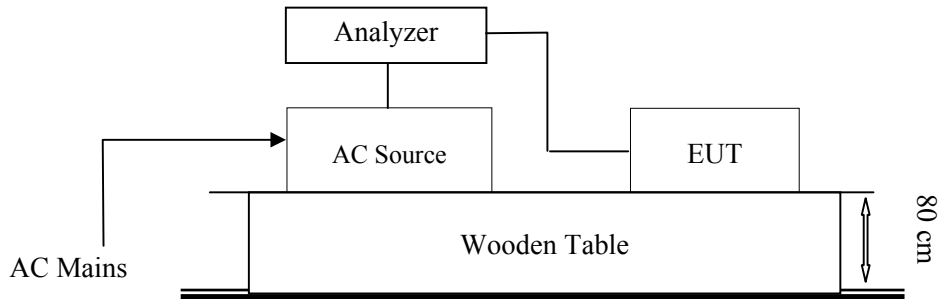
§7.1 - HARMONIC CURRENT EMISSIONS

According to EN 61000-3-2-2014 section 7: Equipment with a rated power of 75 Watt or less, other than lighting equipment, are not included in this standard.

FUNVAL

§7.1-VOLTAGE FLUCTUATION AND FLICKER

Test System Setup



Test Standard

EN 61000-3-3:2013

Flicker Test Limits:

The limits shall be applicable to voltage fluctuations and flicker at the supply terminals of the equipment under test, measured or calculated according to clause 4 under test conditions described in clause 6 and annex A. Tests made to prove compliance with the limits are considered to be type tests.

The following limits apply:

- the value of Pst shall not be greater than 1,0;
- the value of Plt shall not be greater than 0,65;
- the value of d(t) during a voltage change shall not exceed 3,3 % for more than 500 ms;
- the relative steady-state voltage change, dc, shall not exceed 3,3 %;
- the maximum relative voltage change dmax, shall not exceed
 - a) 4 % without additional conditions;
 - b) 6 % for equipment which is:
 - switched manually, or
 - switched automatically more frequently than twice per day, and also has either a delayed restart (the delay being not less than a few tens of seconds), or manual restart, after a power supply interruption.

Note: The cycling frequency will be further limited by the Pst and Plt limit. For example: a dmax of 6 % producing a rectangular voltage change characteristic twice per hour will give a Plt of about 0,65.

c) 7 % for equipment which is

- attended whilst in use (for example: hair dryers, vacuum cleaners, kitchen equipment such as mixers, garden equipment such as lawn mowers, portable tools such as electric drills), or
- switched on automatically, or is intended to be switched on manually, no more than twice per day, and also has either a delayed restart (the delay being not less than a few tens of seconds) or manual restart, after a power supply interruption.

In the case of equipment having several separately controlled circuits in accordance with 6.6, limits b) and c) shall apply only if there is delayed or manual restart after a power supply interruption; for all equipment with automatic switching which is energized immediately on restoration of supply after a power supply interruption, limits a) shall apply; for all equipment with manual switching, limits b) or c) shall apply depending on the rate of switching. Pst and Plt requirements shall not be applied to voltage changes caused by manual switching. The limits shall not be applied to voltage changes associated with emergency switching or emergency interruptions.

Test Data and Setup Photo

Environmental Conditions

Temperature:	22 °C
Relative Humidity:	51 %
ATM Pressure:	101.0 kPa

Date of test:	10:24 2.Aug 2017
Tester:	Kobe Li
Standard used:	EN/IEC 61000-3-3 Flicker
Short time (Pst):	10 min
Observation time:	120 min (12 Flicker measurements)
Flicker meter:	230V / 50Hz
Flicker Impedance:	Zref (IEC 60725)
Customer:	Vonino Electronics Limited
E. U. T.:	Tablet PC
Model:	Pluri C8
EUT operation mode	EUT Operation Mode 3 (Worst case)

Maximum Flicker results

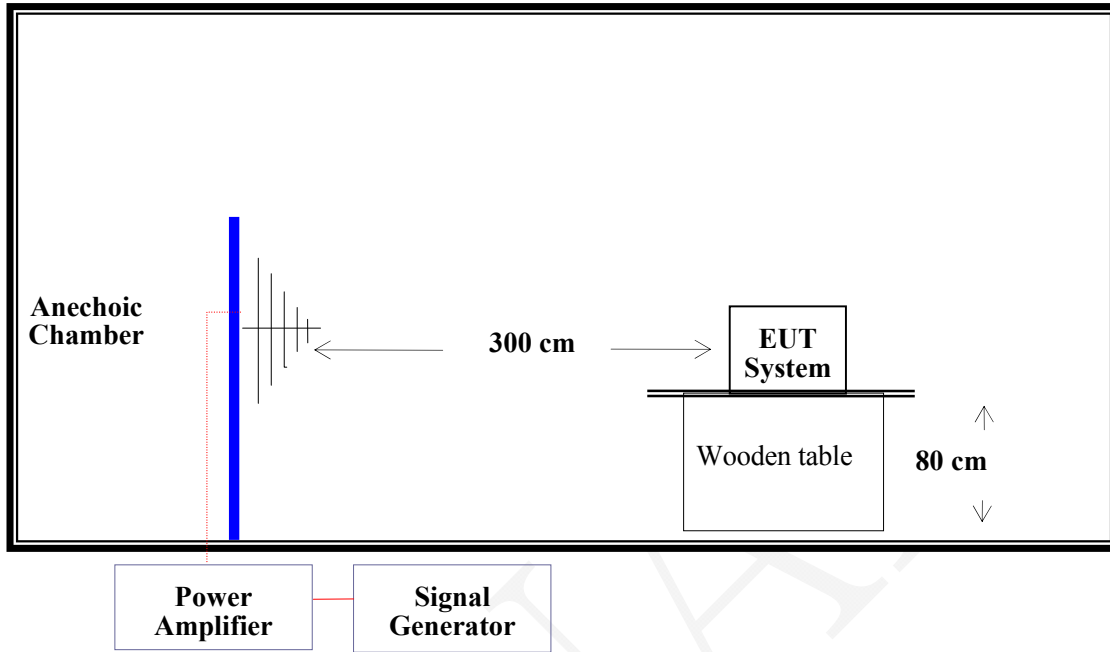
	EUT values	Limit	Result
Pst	0.028	1.00	Pass
Plt	0.028	0.65	Pass
dc [%]	0.017	3.30	Pass
dmax [%]	0.135	4.00	Pass
dt [s]	0.000	0.50	Pass



Test Setup Photo

§7.2 - RF ELECTROMAGNETIC FIELD (80-6000MHz)

Test System Setup



Test Standard

ETSI EN 301 489-1 V2.2.0 / EN 61000-4-3:2006+A1:2008 +A2: 2010
 Test Level 2 at 3V / m
 Test Levels and Performance Criterion

Test Level

Level	Field Strength (V/m)
1.	1
2.	3
3.	10
X.	Special

Test Procedure

The EUT and its simulators are placed on a turn table which is 0.8 meter above the ground. The EUT is set 3 meters away from the transmitting antenna which is mounted on an antenna tower. Both horizontal and vertical polarizations of the antenna are set on test. Each of the four sides of EUT must be faced this transmitting antenna and measured individually. In order to judge the EUT performance, a CCD camera and artificial station are used to monitor the EUT or an artificial ear and sound level meter were used to monitor the sound pressure level. All the scanning conditions are as follows:

Condition of Test	Remarks
1. Field Strength	3 V/m (Test Level 2)
2. Radiated Signal	Modulated
3. Scanning Frequency	80 - 6000 MHz
4. Sweeping time of radiated	0.0015 decade/s
5. Dwell Time	1 Sec.

Test Data and Setup Photo

Environmental Conditions

Temperature:	24 °C
Relative Humidity:	48 %
ATM Pressure:	101.0 kPa

The testing was performed by Kobe Li on 2017-08-03.

EUT Operation Mode 1 & EUT Operation Mode 2 & EUT Operation Mode 3 & EUT Operation Mode 4 & EUT Operation Mode 5:

Frequency Range (MHz)	Front Side (3 V/m)		Rear Side (3 V/m)		Left Side (3 V/m)		Right Side (3 V/m)	
	VERT	HORI	VERT	HORI	VERT	HORI	VERT	HORI
80-6000	A	A	A	A	A	A	A	A

Performance Criterion: A

EUT Operation Mode 5:

Note: "A" stand for, during test, operate as intended No loss function, and after test, operate as intended.

EUT Operation Mode 1 & EUT Operation Mode 2:

Note: "A" stand for, during test, operate as intended No loss function, no degradation of performance, no unintentional transmissions and after test, no degradation of performance, no loss of function, no loss of stored data or user programmable functions.

EUT Operation Mode 3:

Note: "A" stand for, the uplink/downlink speech output level shall be at least 35 dB less than the previously recorded reference levels, when measured through an audio band pass filter of width 200 Hz, centred on 1 kHz (audio breakthrough check). The RXQUAL of the downlink is not exceeding the value of three, measured during each individual exposure in the test sequence. Or during and after the test, the apparatus continue to operate as intended. No degradation of performance or loss of function is allowed below a permissible performance level

EUT Operation Mode 4:

Note: "A" stand for, In the data transfer mode, the BER (as referred in TS 134 109 [8]) is used, it shall not exceed 0,001 during the test sequence, in the speech mode, the performance criteria shall be that the up link and downlink speech output levels shall be at least 35 dB less than the recorded reference levels, when measured through an audio band pass filter of width 200 Hz, centred on 1 kHz. in idle mode, the transmitter is not unintentionally operate.

Below 1GHz



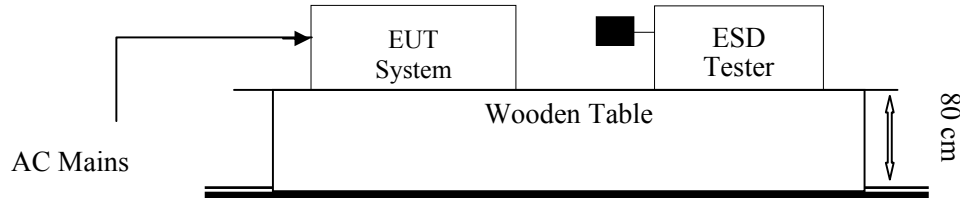
Above 1GHz



Test Setup Photos

§7.2 - ELECTROSTATIC DISCHARGE

Test System Setup



Remark: ■ is the tip of the electrode

EN 61000-4-2 specifies that a tabletop EUT shall be placed on a non-conducting table which is 80 centimeters above a ground reference plane and that floor mounted equipment shall be placed on a insulating support approximately 10 centimeters above a ground plane. During the tests, the EUT is positioned over a ground reference plane in conformance with this requirement.

For tabletop equipment, a 1.6 by 0.8-meter metal sheet (HCP) is placed on the table and connected to the ground plane via a metal strap with two 470 k Ohms resistors in series. The EUT and attached cables are isolated from this metal sheet by 0.5-millimeter thick insulating material. A Vertical Coupling Plane (VCP) grounded on the ground plane through the same configuration as in the HCP is used.

Test Standard

ETSI EN 301 489-1 V2.2.0 / EN 61000-4-2:2009

Air Discharge at ± 2 kV, ± 4 kV, ± 8 kV

Contact Discharge at ± 2 kV, ± 4 kV

Test Level

Level	Test Voltage Contact Discharge (\pm kV)	Test Voltage Air Discharge (\pm kV)
1.	2	2
2.	4	4
3.	6	8
4.	8	15
X.	Special	Special

Performance criterion: **B**

Test Procedure

Air Discharge:

This test is done on a non-conductive surface. The round discharge tip of the discharge electrode shall be approached as fast as possible to touch the EUT. After each discharge, the discharge electrode shall be removed from the EUT. The generator is then re-triggered for a new single discharge and repeated 10 times for each pre-selected test point. This procedure shall be repeated until all the air discharge completed.

Contact Discharge:

All the procedure shall be same as Section 8.3.1 of EN 61000-4-2, except that the tip of the discharge electrode shall touch the EUT before the discharge switch is operated.

Indirect discharge for horizontal coupling plane

At least 50 single discharges shall be applied to the horizontal coupling plane, at points on each side of the EUT. The discharge electrode positions vertically at a distance of 0.1m from the EUT and with the discharge electrode touching the coupling plane.

Indirect discharge for vertical coupling plane

At least 50 single discharges shall be applied to the center of one vertical edge of the coupling plane. The coupling plane, of dimensions 0.5m × 0.5m, is placed parallel to, and positioned at a distance of 0.1m from the EUT. Discharges shall be applied to the coupling plane, with this plane in sufficient different positions that the four faces of the EUT are completely illuminated.

Test Data and Setup Photo

Environmental Conditions

Temperature:	24 °C
Relative Humidity:	48 %
ATM Pressure:	101.0 kPa

The testing was performed by Kobe Li on 2017-08-03.

EUT Operation Mode 1 & EUT Operation Mode 2 & EUT Operation Mode 3 & EUT Operation Mode 4 & EUT Operation Mode 5:

Table 1: Electrostatic Discharge Immunity (Air Discharge)

EN 61000-4-2 Test Points Location	Test Levels							
	-2 kV	+2 kV	-4 kV	+4 kV	-8 kV	+8 kV	-15 kV	+15 kV
Front (9 points)	A	A	A	A	A	A	/	/
Rear (6 points)	A	A	A	A	A	A	/	/
Left (5 points)	A	A	A	A	A	A	/	/
Right (3 points)	A	A	A	A	A	A	/	/
Top (4 points)	A	A	A	A	A	A	/	/
Bottom (2 points)	A	A	A	A	A	A	/	/

Table 2: Electrostatic Discharge Immunity (Direct Contact)

EN 61000-4-2 Test Points Location	Test Levels							
	-2 kV	+2 kV	-4 kV	+4 kV	-6 kV	+6 kV	-8 kV	+8 kV
/	/	/	/	/	/	/	/	/

Table 3: Electrostatic Discharge Immunity (Indirect Contact HCP)

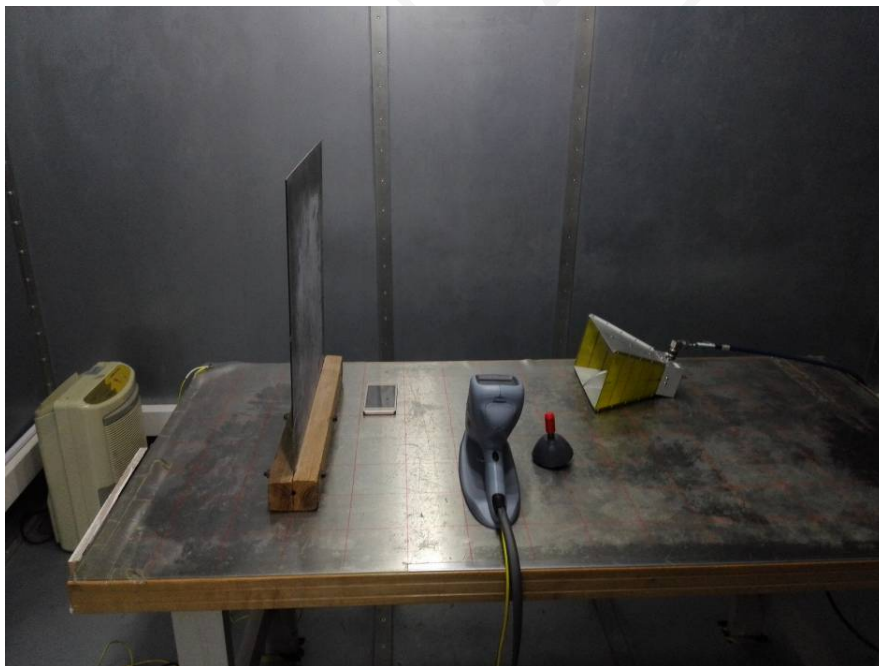
EN 61000-4-2 Test Points Location	Test Levels							
	-2 kV	+2 kV	-4 kV	+4 kV	-6 kV	+6 kV	-8 kV	+8 kV
Front Side	A	A	A	A	/	/	/	/
Back Side	A	A	A	A	/	/	/	/
Left Side	A	A	A	A	/	/	/	/
Right Side	A	A	A	A	/	/	/	/

Table 4: Electrostatic Discharge Immunity (Indirect Contact VCP)

EN 61000-4-2 Test Points Location	Test Levels							
	-2 kV	+2 kV	-4 kV	+4 kV	-6 kV	+6 kV	-8 kV	+8 kV
Front Side	A	A	A	A	/	/	/	/
Back Side	A	A	A	A	/	/	/	/
Left Side	A	A	A	A	/	/	/	/
Right Side	A	A	A	A	/	/	/	/



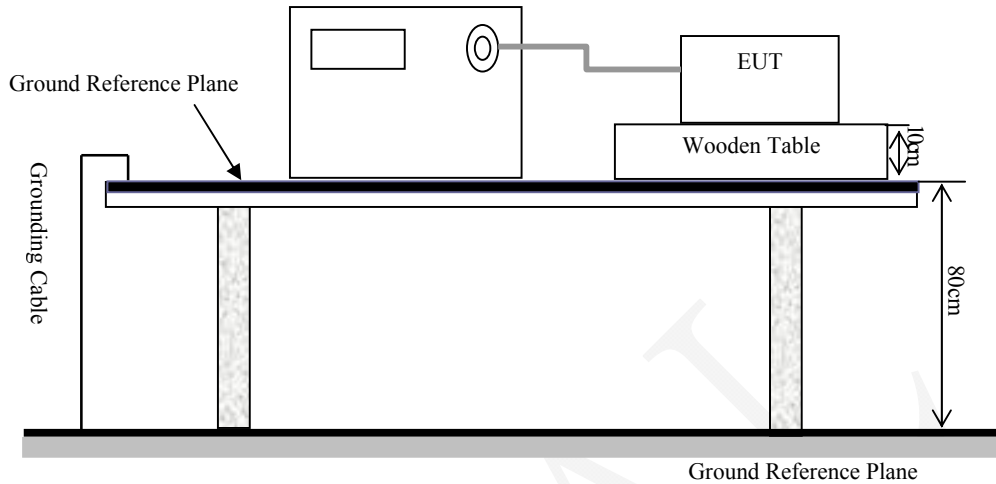
Note:  represents air discharge,  represents direct contact



Test Setup Photos

§7.2 - ELECTRICAL FAST TRANSIENT IMMUNITY

Test System Setup



Test Standard

ETSI EN 301 489-1 V2.2.0 / EN 61000-4-4: 2004 + A1:2010
 AC Mains: Test level 2 at 1 kV

Test Level

Open Circuit Output Test Voltage $\pm 10\%$		
Level	On Power Supply Lines	On I/O (Input/Output) Signal data and control lines
1	0.5 kV	0.25 kV
2	1 kV	0.5 kV
3	2 kV	1 kV
4	4 kV	2 kV
X	Special	Special

Performance Criterion: B

Test Procedure

The EUT was arranged for Power Line Coupling and for I/O Line Coupling through a capacitive clamp, where applicable. (Note: The I/O coupling test using a capacitive clamp is performed on the I/O interface cables that are longer in length than 3 meters.) A metal ground plane 2.4 meter by 2.0 meter was placed between the floor and the table and is connected to the earth by a 2.0 meter ground rod. The ground rod is connected to the test facility's electrical earth.

Test Data and Setup Photo

Environmental Conditions

Temperature:	24 °C
Relative Humidity:	48 %
ATM Pressure:	101.0 kPa

The testing was performed by Kobe Li on 2017-08-03.

EUT Operation Mode 1 & EUT Operation Mode 2 & EUT Operation Mode 3 & EUT Operation Mode 4 & EUT Operation Mode 5:

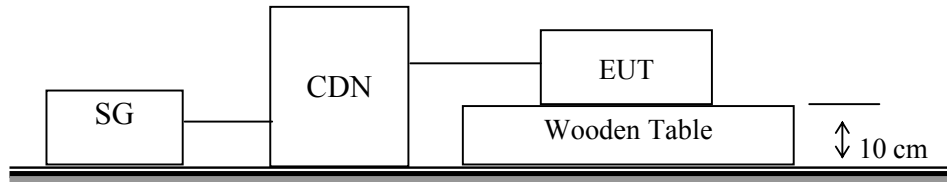
EN 61000-4-4 Test Points		Test Levels (kV)							
		+0.5	-0.5	+1.0	-1.0	+2.0	-2.0	+4.0	-4.0
AC Mains Power Input Ports	L1	/	/	A	A	/	/	/	/
	N	/	/	A	A	/	/	/	/
	PE	/	/	/	/	/	/	/	/
	L1/N	/	/	A	A	/	/	/	/
	L1/PE	/	/	/	/	/	/	/	/
	N/PE	/	/	/	/	/	/	/	/
	L1/N/PE	/	/	/	/	/	/	/	/
Signal Port	/	/	/	/	/	/	/	/	



Test Setup Photo

§7.2 - RF COMMON MODE

Test Setup



Test Standard

ETSI EN 301 489-1 V2.2.0/EN 61000-4-6: 2009
Test level 2 at 3 V (r.m.s.), 0.15 MHz ~ 80 MHz

Test Level

Level	Voltage Level (r.m.s.) (U_0)
1	1
2	3
3	10
X	Special

Performance Criterion: A

Note: “A” stand for, during test, operate as intended no loss function, no degradation of performance, no unintentional retransmissions and after test, no degradation of performance, no loss of function, no loss of stored data or user programmable functions.

Test Procedure

- 1) Let the EUT work in test mode and test it.
- 2) The EUT are placed on an insulating support 0.1 m high above a ground reference plane. CDN (coupling and decoupling device) is placed on the ground plane about 0.3 m from EUT. Cables between CDN and EUT are as short as possible, and their height above the ground reference plane shall be between 30 and 50 mm (where possible).
- 3) The disturbance signal described below is injected to EUT through CDN.
- 4) The EUT operates within its operational mode(s) under intended climatic conditions after power on.
- 5) The frequency range is swept from 150 kHz to 80 MHz using 3V signal level, and with the disturbance signal 80% amplitude modulated with a 1 kHz sine wave.
- 6) The rate of sweep shall not exceed 1.5×10^{-3} decades/s. Where the frequency is swept incrementally, the step size shall not exceed 1% of the start and thereafter 1% of the preceding frequency value.
- 7) Recording the EUT operating situation during compliance testing and decide the EUT immunity criterion.

Test Data and Setup Photo

Environmental Conditions

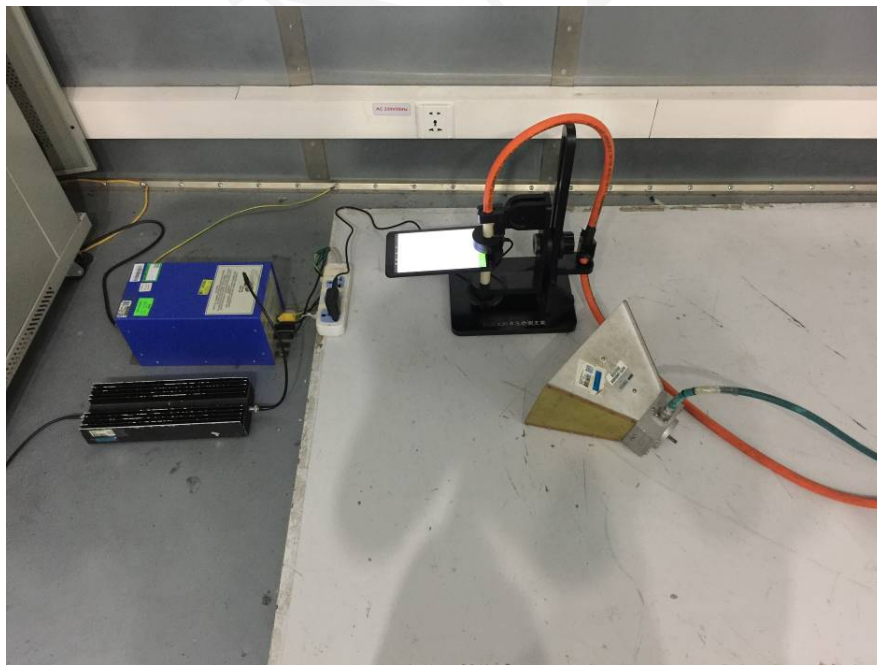
Temperature:	24 °C
Relative Humidity:	48 %
ATM Pressure:	101.0 kPa

The testing was performed by Kobe Li on 2017-08-04.

EUT Operation Mode 1 & EUT Operation Mode 2 & EUT Operation Mode 3 & EUT Operation Mode 4 & EUT Operation Mode 5:

Table 1: AC mains power input port
Frequency range: 150 kHz to 80 MHz
Modulation: Amplitude 80%, 1 kHz sine wave
Test level: 3V r.m.s.

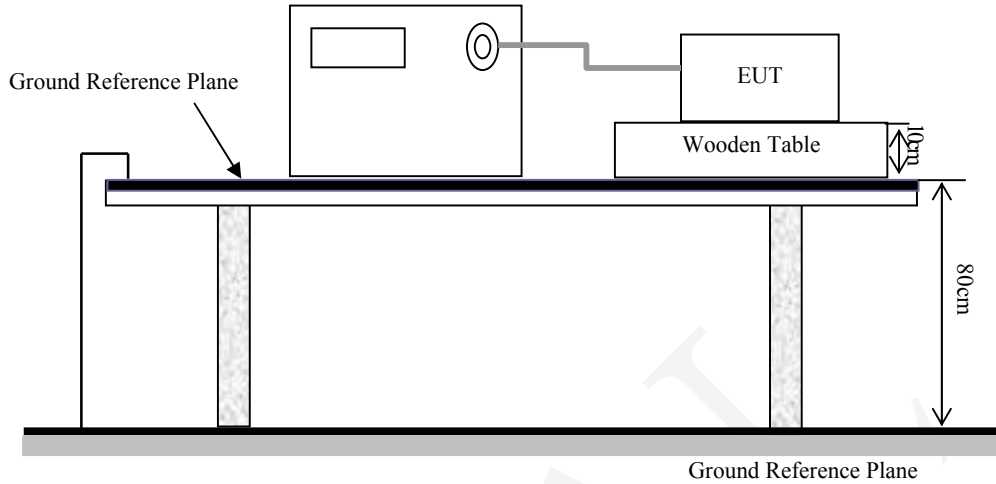
Level	Voltage Level (r.m.s.) U ₀	Pass	Fail
1	1	/	/
2	3	A	/
3	10	/	/
X	Special	/	/



Test Setup Photo

§7.2 - SURGES, LINE TO LINE AND LINE TO GROUND

Test System Setup



Test Standard

ETSI EN 301 489-1 V2.2.0/ EN 61000-4-5: 2006
 AC Mains port:
 Line to Line at $\pm 0.5\text{kV}$, $\pm 1\text{kV}$;

Test Level

Level	Open Circuit Output Test Voltage $\pm 10\%$	Performance Criterion	
		AC Mains	Signal Port
1	0.5 kV	B	C
2	1 kV	B	C
3	2 kV	B	C
4	4 kV	B	C
X	Special	/	/

Test Procedure

- 1) For line to line coupling mode, provide a 1.2/50 μ s voltage surge (at open-circuit condition) and a 8/20 μ s current surge into a short circuit.
- 2) For telecommunication port, provide a 10/700 μ s voltage surge (at open-circuit condition) and a 5/320 μ s current surge into a short circuit.
- 3) At least 5 positive and 5 negative (polarity) tests with a maximum 1/min repetition rate are conducted during test.
- 4) Different phase angles are done individually.
- 5) Record the EUT operating situation during compliance test and decide the EUT immunity criterion for above each test.

Test Data and Setup Photo

Environmental Conditions

Temperature:	24 °C
Relative Humidity:	48 %
ATM Pressure:	101.0 kPa

The testing was performed by Kobe Li on 2017-08-04.

EUT Operation Mode 1 & EUT Operation Mode 2 & EUT Operation Mode 3 & EUT Operation Mode 4 & EUT Operation Mode 5:

Table 1: AC mains power input port

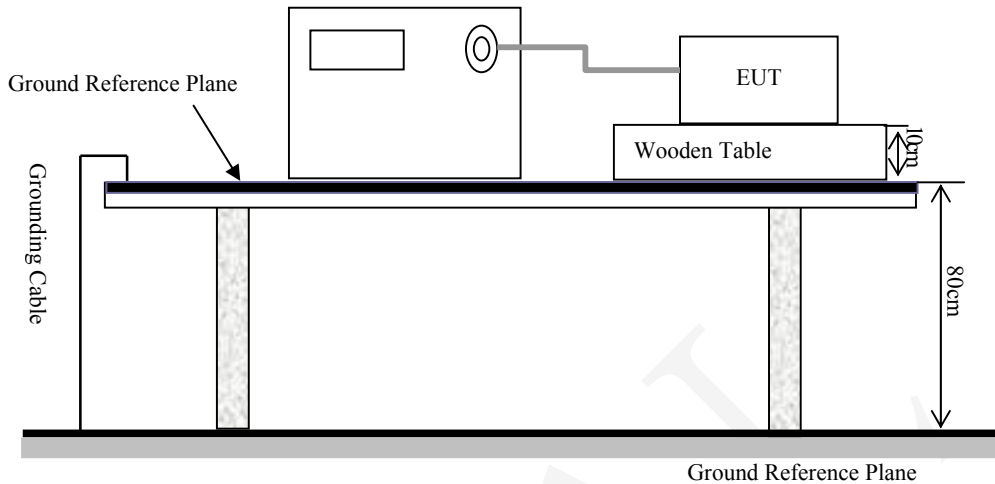
Level	Voltage	Poll	Path	Pass	Fail
1	0.5 kV	±	L1/N	A	/
2	1 kV	±	L1/N	A	/
3	2 kV	±	/	/	/
4	4 kV	±	/	/	/



Test Setup Photo

§7.2 - VOLTAGE DIPS AND INTERRUPTIONS IMMUNITY TEST

Test Setup



Test Standard

ETSI EN 301 489-1 V2.2.0 / EN 61000-4-11: 2004
 Test levels and Performance Criterion

Test Level

Test Level	Voltage dip and short interruptions (% Residual Voltage)	Duration (in period)	Performance criterion:
1	0	0.5	B
2	0	1	B
3	70	25	C
4	0	250	C

Test Procedure

- 1) The interruption is introduced at selected phase angles with specified duration.
- 2) Record any degradation of performance.

Test Data and Setup Photo

Environmental Conditions

Temperature:	24 °C
Relative Humidity:	48 %
ATM Pressure:	101.0 kPa

The testing was performed by Kobe Li on 2017-08-04.

EUT Operation Mode 1 & EUT Operation Mode 2 & EUT Operation Mode 3 & EUT Operation Mode 4 & EUT Operation Mode 5:

Level	Voltage dip and short interruptions (% Residual Voltage)	Periods	Phase Angle	N	Result
1	0	0.5	0/90/180/270	3	A
2	0	1	0/90/180/270	3	A
3	70	25	0/90/180/270	3	B
4	0	250	0/90/180/270	3	B

Note: “B” means “the EUT charging interrupt every 10 seconds, can restore automatically”.



Test Setup Photo

EXHIBIT A - PRODUCT CE LABELING

Proposed CE Label Format



Specification: The marking set out above must be affixed to the apparatus or to its data plate and have a minimum height of 5 mm. The elements should be easily readable and indelible. They may be placed anywhere on the apparatus case or in its battery compartment. No tool should be needed to view the marking

Proposed Label Location on EUT

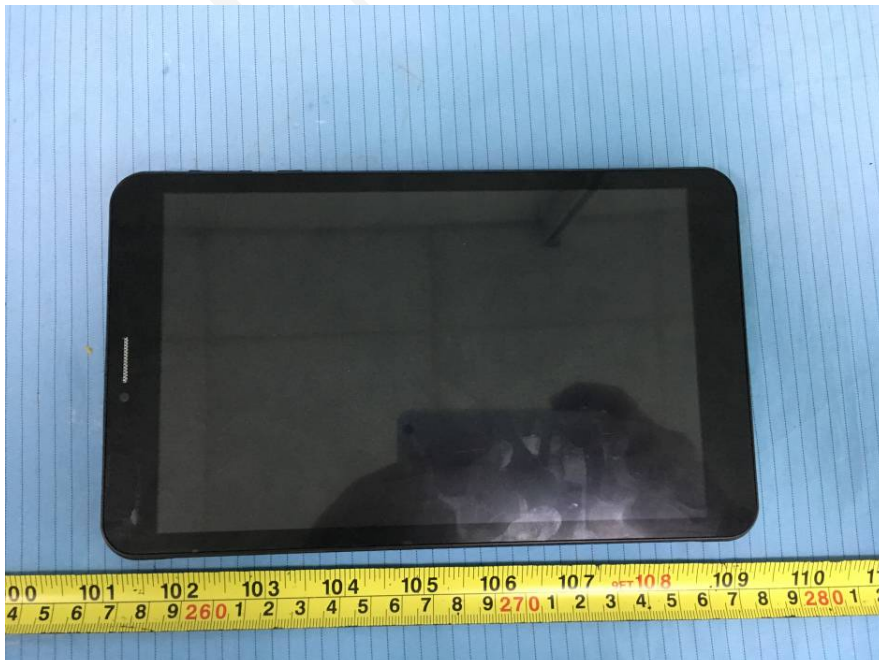


EXHIBIT B - EUT PHOTOGRAPHS

EUT – All View



EUT – Front View



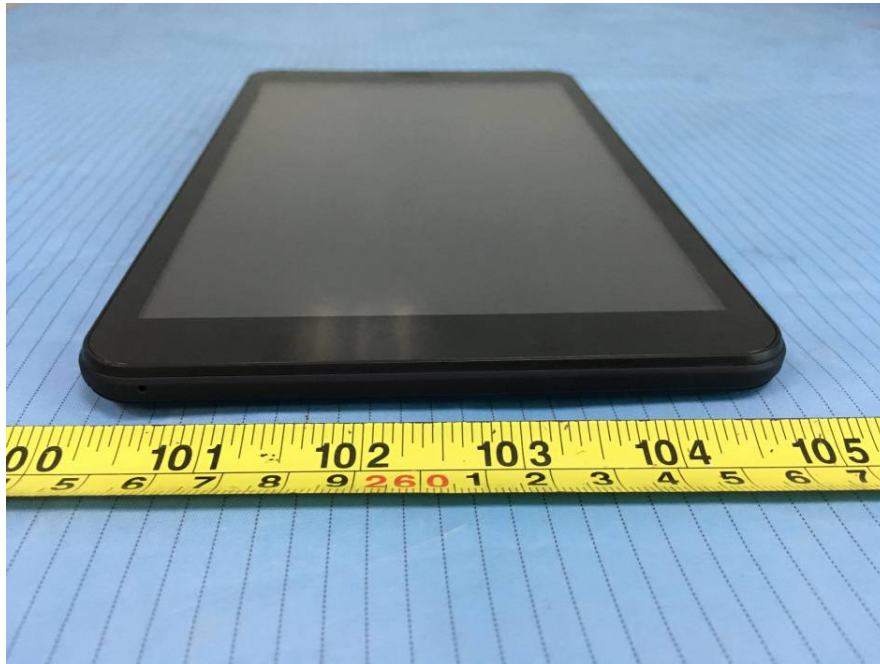
EUT – Rear View



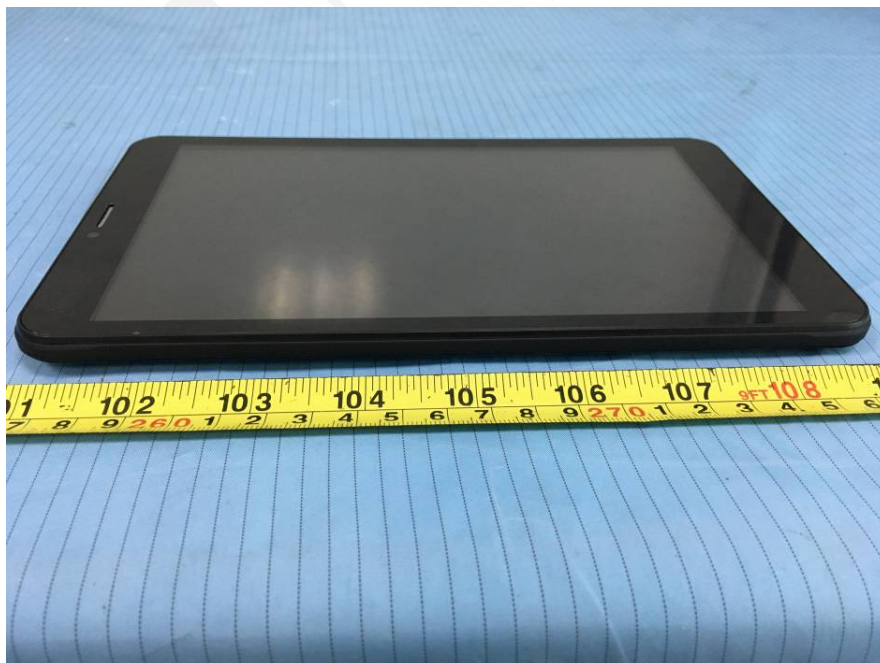
EUT – Top View



EUT – Bottom View



EUT – Left View



EUT – Right View



EUT – Cover off View 1



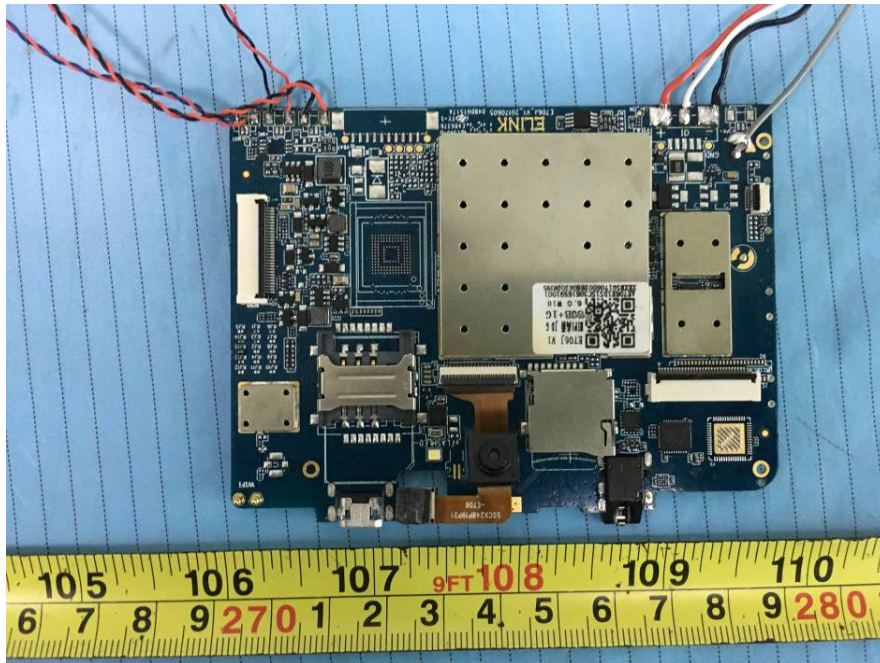
EUT – Cover off View 2



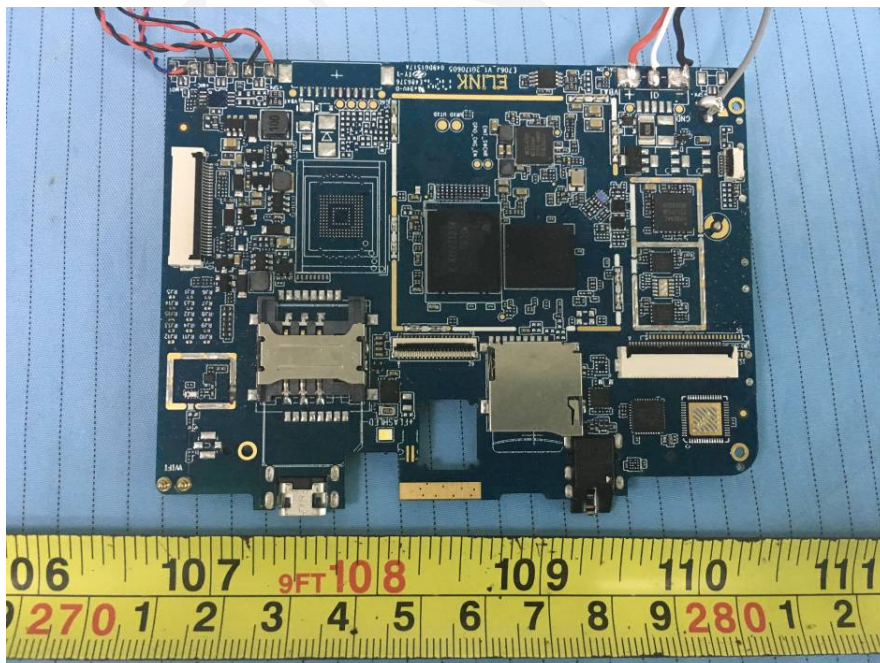
EUT – Cover off View 3



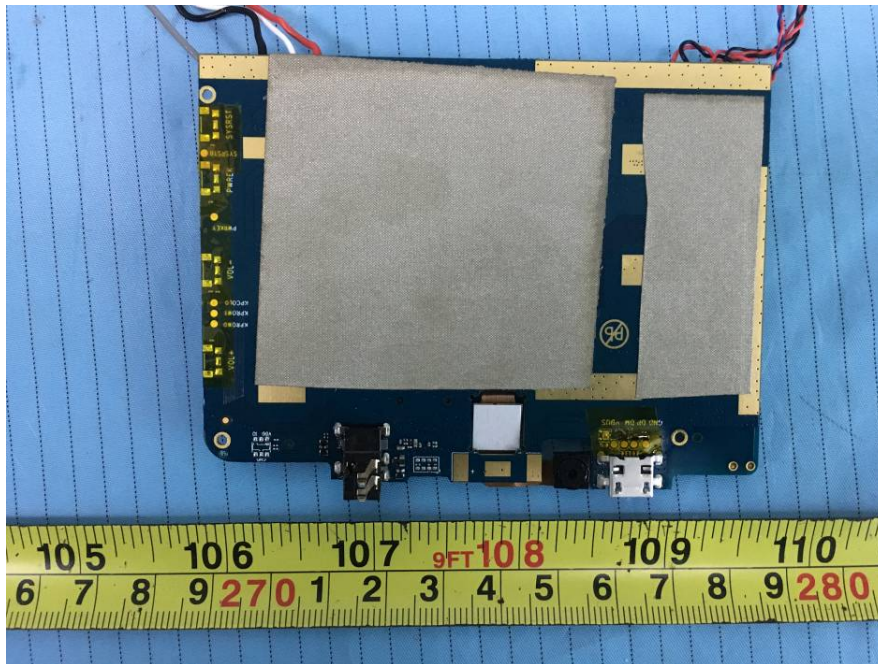
EUT – Main Board Top View



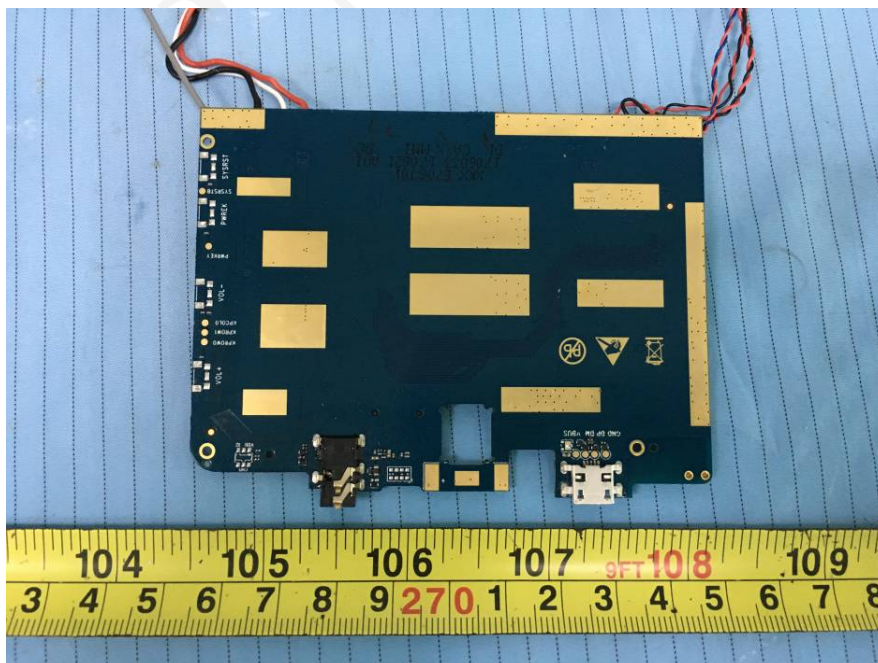
EUT – Main Board Top Shielding off View



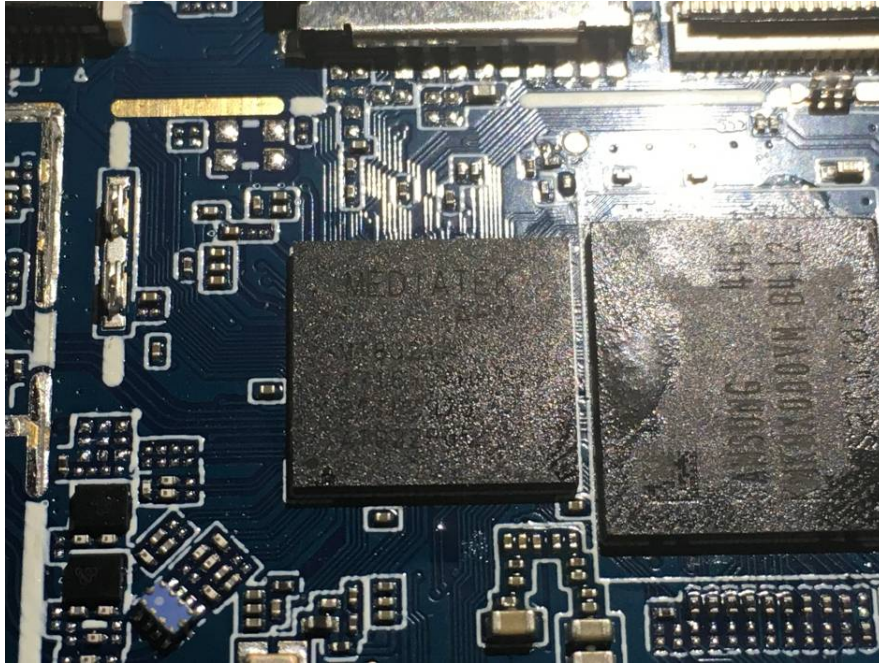
EUT – Main Board Bottom View



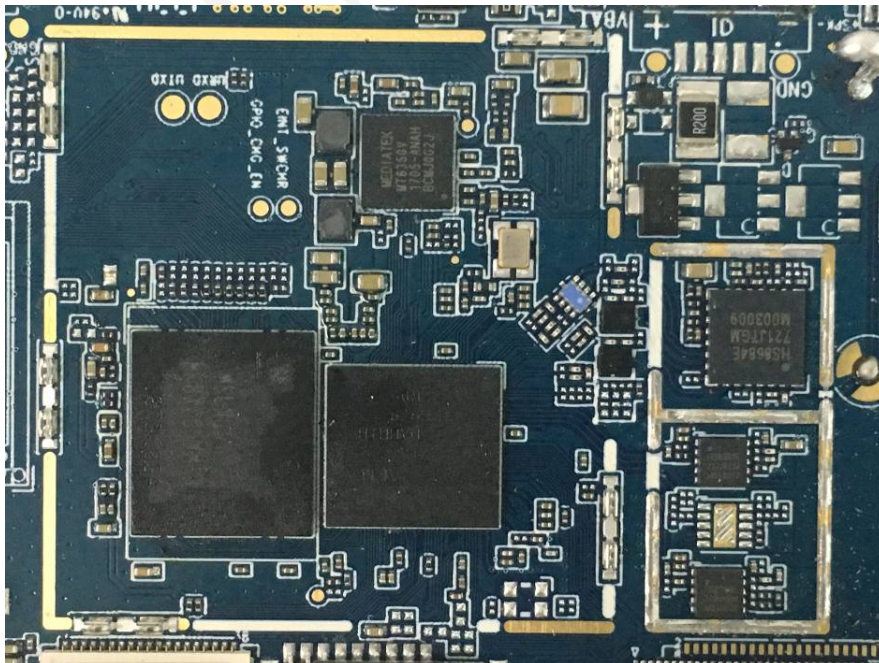
EUT – Main Board Bottom Shielding off View



EUT – IC 1 View



EUT – IC 2 View



EUT – Adapter Front View



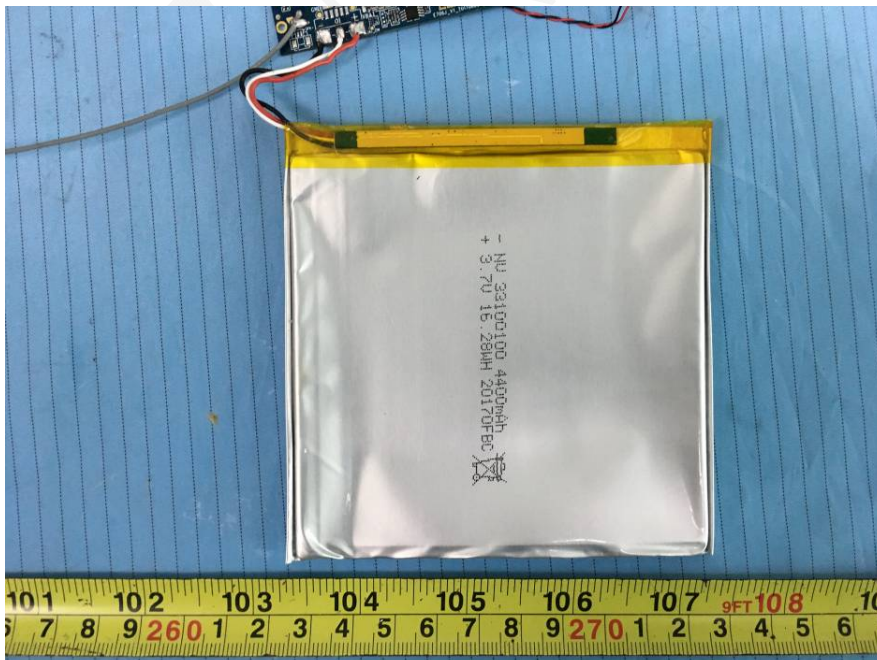
EUT – Adapter Rear View



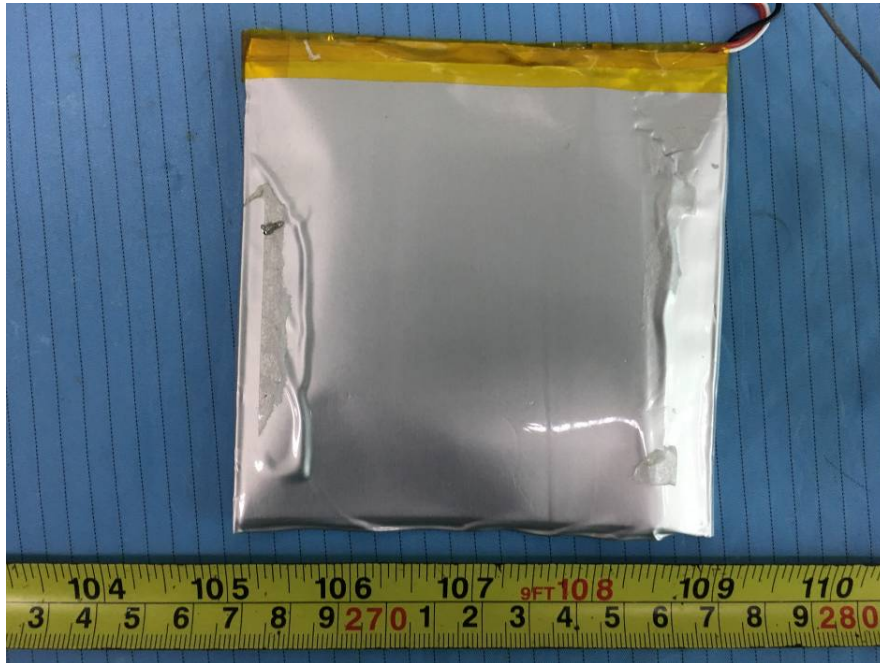
EUT – Adapter Label View



EUT – Battery Top View



EUT – Battery Bottom View



EUT – USB Cable View

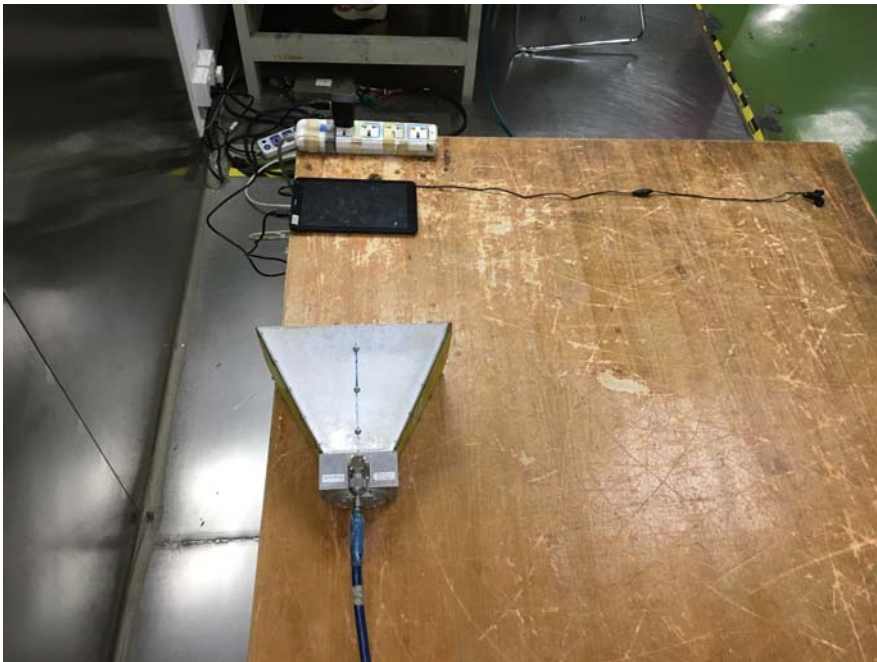


EXHIBIT C – TEST SETUP PHOTOGRAPHS

Conducted Emissions - Front View



Conducted Emissions - Side View



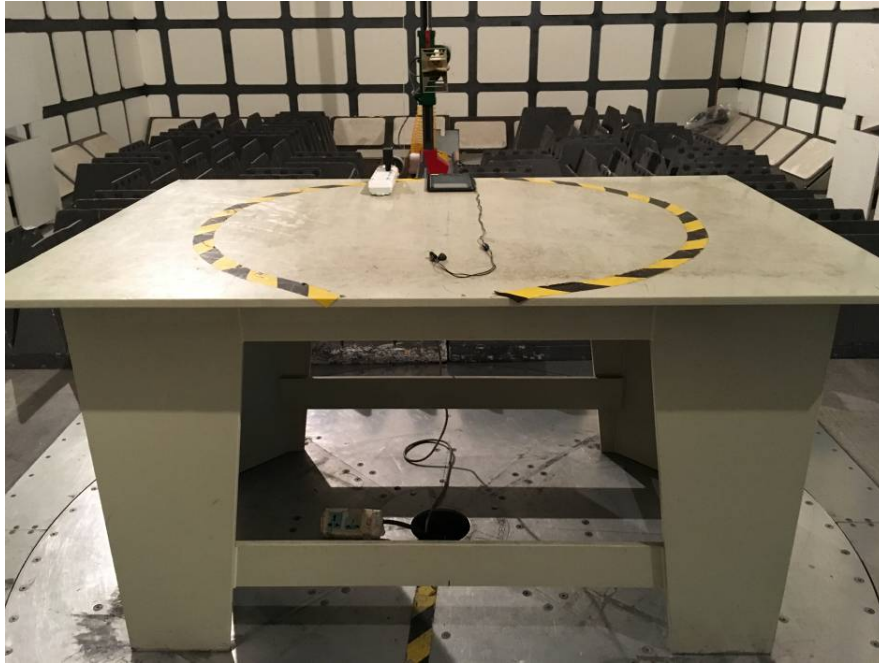
Radiated Emissions – Front View (Below 1 GHz)



Radiated Emissions – Rear View (Below 1 GHz)



Radiated Emissions – Front View (Above 1 GHz)



Radiated Emissions – Rear View (Above 1 GHz)



******* END OF REPORT *******